

TU2-PCBUS
USB 2.0 CardBus
PC Cards

User's Guide

M73-APO09-420

Regulatory statement

FCC Certification

Part15, Class B

The United States Federal Communication Commission (FCC) and the Canadian Department of Communications have established certain rules governing the use of electronic equipment.

FCC Part 15 Registration

This device complies with Part 15 of FCC rules. Operation is subject to the following two conditions:

This device may not cause harmful interface, and This device must accept any interface received, including interface that may cause undesired operation. This equipment has been tested and found to comply with the limits for a Class B digital device, pursuant to Part 15 of the FCC Rules. These limits are designed to provide reasonable protection against harmful interference in a residential installation. This equipment generates, uses and can radiate radio frequency energy, and if not installed and used in accordance with the instructions, may cause harmful interference to radio communications. However, there is no guarantee that interference will not occur in a particular installation. If this equipment does cause harmful interference to radio or television reception, which can be determined by turning off and on, the user is encouraged to try to correct the interference by one or more of the following measures:

- ω Reorient or relocate the receiving antenna.
- ω Increase the distance between the equipment and receiver.
- ω Connect the equipment into an outlet on a circuit different from that to which the receiver is connected.

Table of Contents

Regulatory statement	1
Introduction	1
Features.....	1
System requirement	1
Installation.....	2
Installation for Windows 98/ME	2
Installation for Windows 2000.....	8
Using Microsoft driver.....	8
Using manufacturer's driver	12
Installation for Windows XP	15
Using Microsoft Driver.....	15
Using manufacturer's Driver	16

Introduction

The USB 2.0 CardBus PC Card is a Hi-Speed peripheral connection for PCs. It delivers advanced functionality and flair to run devices 40 times faster than legacy USB 1.1 ports. USB 2.0 Hi-Speed technology allows users a hassle free way to connect hi-speed peripheral devices to their computers such as DVD, CD-RW, and scanners. USB 2.0 can transfer data up to 480Mb/sec, it is an ideal solution for data intense applications like digital video downloads, digital cameras, external storage devices, and high-speed cameras.

Features

- Improves peripheral performance for printers, scanners, etc.
- Supports 32-bit CardBus PC Card type II slots
- Quick& easy installation - ideal for any mobile executive.
- Provides 2 external USB type-A ports.
- Supports transfer rate of 1.5/12/480 Mbps.
- Fully forward and backward compatible with USB 1.1.
- Automatically switches to the peripheral's highest supported speed.
- Supports high-speed (480 Mbps), full-speed (12 Mbps), and low-speed (1.5 Mbps) data transfer modes.
- Connects up to 127 devices
- Supports simultaneous operation of multiple USB 2.0 and 1.1 devices

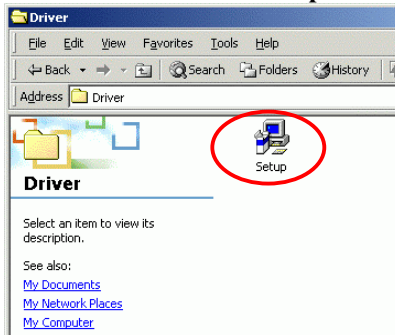
System requirement

- Pentium-class notebook computers
- One available PCMCIA CardBus slot
- Windows 98SE, ME, 2000, or XP

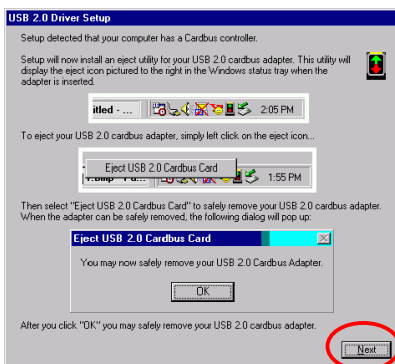
Installation

Installation for Windows 98/ME

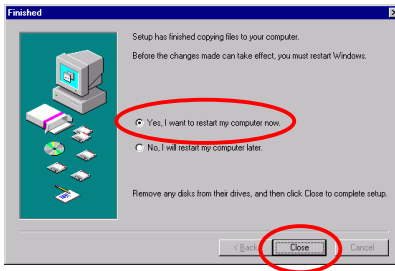
Insert the driver CD-ROM into the CD-ROM drive and double-click on the **Setup** icon



1. When the following figure appears, click **Next**

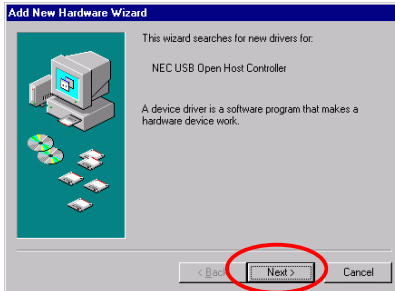


2. Select **“Yes, I want to restart my computer now”** and click **Close** to reboot your computer.

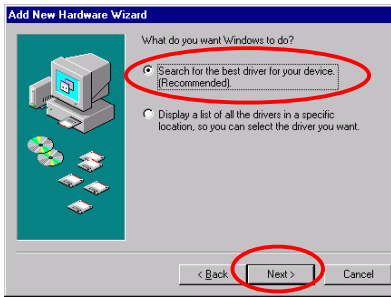


3. After restarting your computer, insert the USB2.0 CardBus PC Card into the PCMCIA CardBus slot of your notebook, and follow the on-screen instruction to proceed the software installation.

4. Click **Next**.



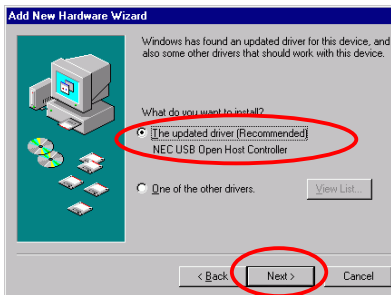
5. Select **search for the best driver for your device (Recommended)** and click **Next**



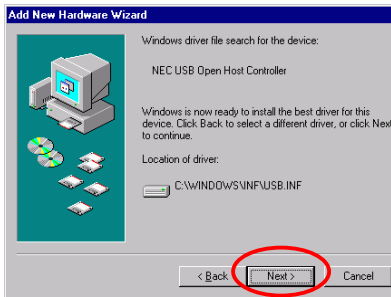
6. Do not select any item and click **Next**.



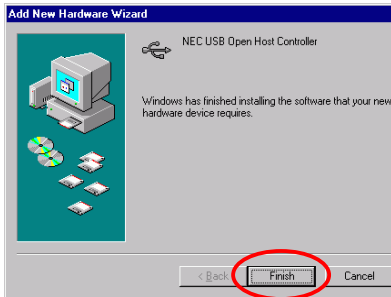
7. Select **The updated driver NEC USB Open Host Controller (Recommended)** and Click **Next**.



8. Click **Next**.



9. Click **Finish** to continue the installation

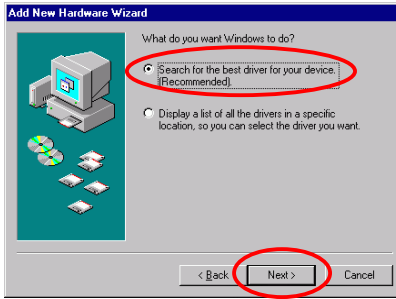


10. Click **Next**.

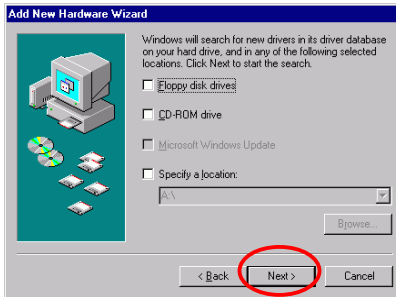


11. Select **Search for the best driver for your**

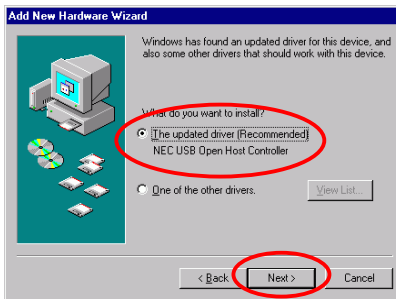
device (Recommended) and click Next.



12. Do not select any item and click Next.



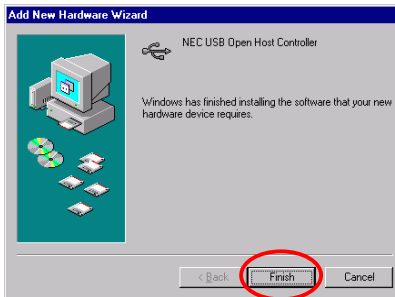
13. Select The updated driver NEC USB Open Host Controller (Recommended) and click Next.



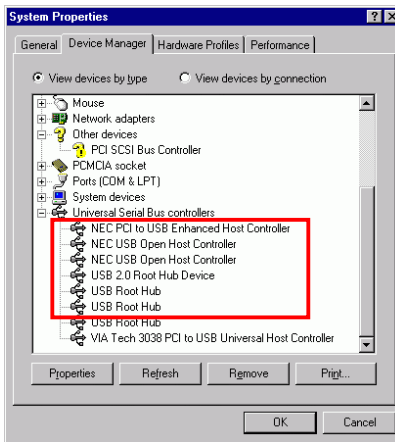
14. Click **Next**.



15. The system will ask you to insert Windows 98 SE/ME CD-ROM, follow the instruction and insert the CD-ROM.
16. Click **Finish** to complete the installation.



17. To check if the device is well installed, left-click the **My Computer** icon on the desktop and click **Properties**→**Hardware**→**Device Manager**. If the **following items** are listed, it means your USB2.0 CardBus PC Card is successfully installed

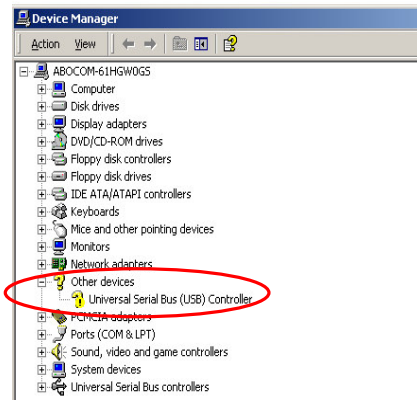


Installation for Windows 2000

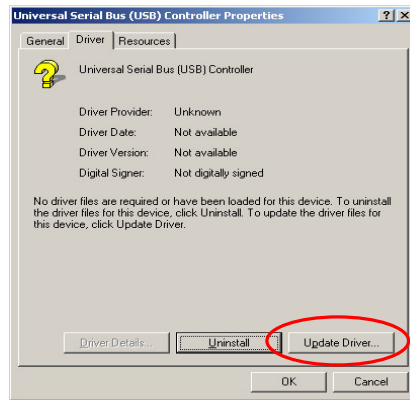
You can choose to use Microsoft driver or manufacturer driver.

Using Microsoft driver

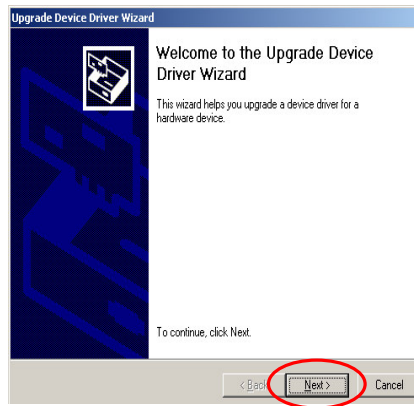
1. On the **start** menu, point to **Settings**, click **Control Panel**, and then double-click the **System** icon.
2. Click the **Hardware** tab, and then click the **Device Manager** button.
3. Double-click **Universal Serial Bus (USB) Controllers**.



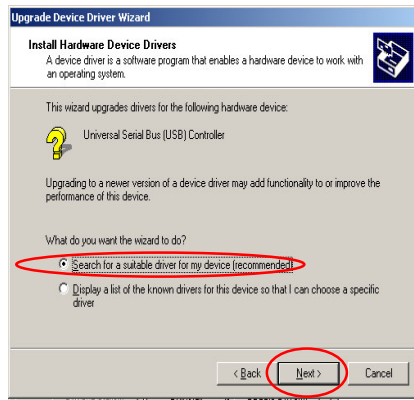
4. Click the **Driver** tab, and then click the **Update Driver** button.



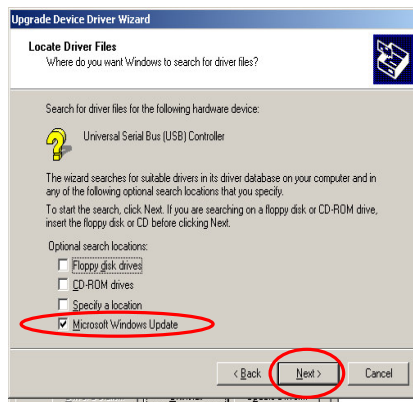
5. When the "Upgrade Device Driver Wizard" dialog box appears, click **Next**.



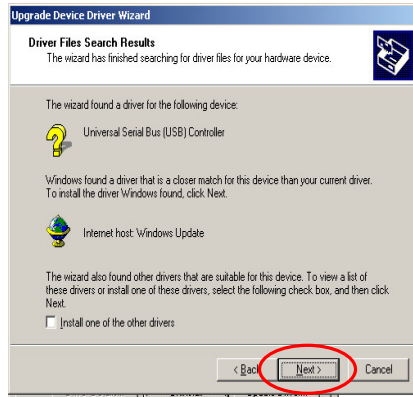
6. Check **Search for a suitable driver for my device.**



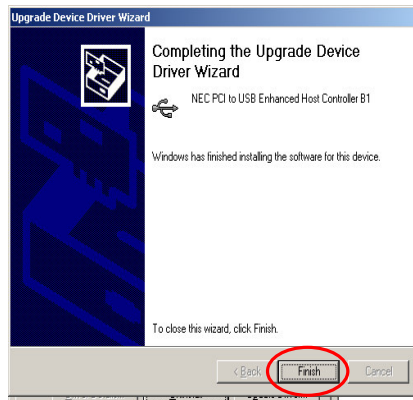
7. Check **Microsoft Windows Update**, and then click **Next**.



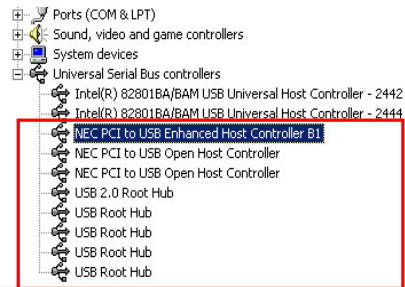
8. Click **Next**.



9. Click **Finish**.

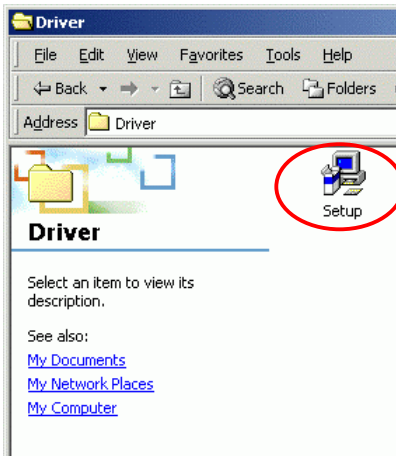


10. To verify the USB 2.0 CardBus PC Card is well installed, go to **My Computer**→**Properties**→**Hardware**→**Device Manager**, if the following items are listed , it means your device is well installed.

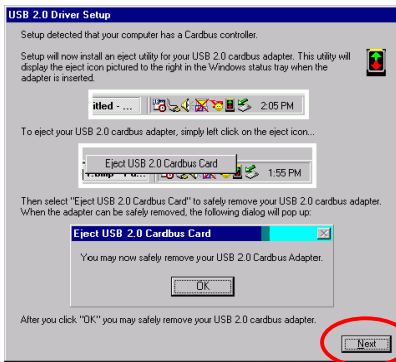


Using manufacturer's driver

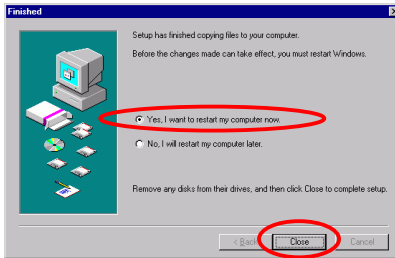
1. Insert the driver CD-ROM into the CD-ROM drive and double-click on the **Setup** icon.



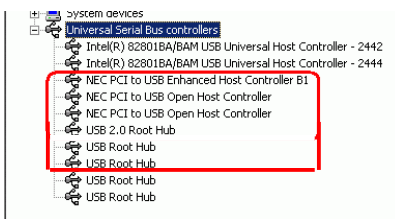
2. When the following figure appears, click **Next**



3. Select **“Yes, I want to restart my computer now”** and click **Close** to reboot your computer.



4. After restarting your computer, insert the USB2.0 CardBus PC Card into the PCMCIA CardBus slot of your notebook and the system will automatically detect the device.
5. To check if the device is well installed, left -click the **My Computer** icon on the desktop and click **Properties** → **Hardware** → **Device Manager**. If the **following items** are listed, it means your USB2.0 CardBus PC Card is successfully installed



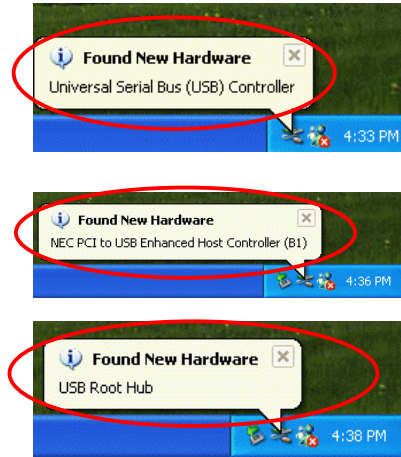
Installation for Windows XP

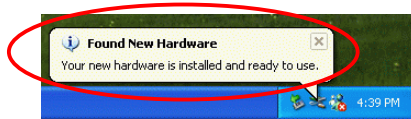
You can choose to use the Microsoft Driver or manufacturer's driver.

Using Microsoft Driver

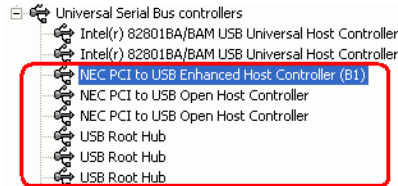
Please check your Operating System first, be sure service pack 1 or later is installed, to verify service pack 1 or later is installed, go to **My computer**→**Properties**→**General**. If it's installed, the system will automatically detect the device once you insert the device into the PCMCIA CardBus slot of the notebook.

1. If service pack 1 is already installed, once you insert the device into the PCMCIA CardBus slot of your notebook, the following figures will appear to show that your device is well installed.



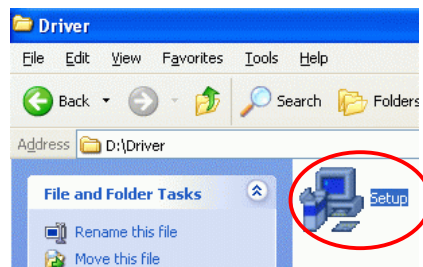


2. To check if the device is well-installed, left-click the **My Computer** icon on the desktop and click **Properties** → **Hardware** → **Device Manager**. If the following items are listed, it means your device is well installed.

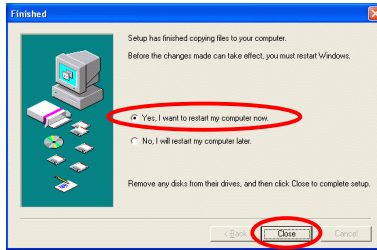


Using manufacturer's Driver

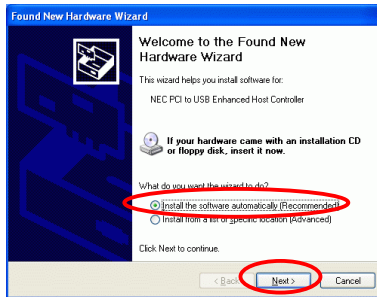
1. Double-click on the **Setup** icon.



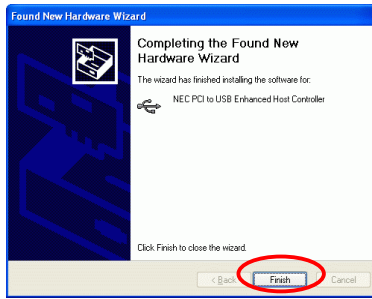
2. The following figure will appear, select **“Yes, I want to restart my computer now”** and click **close** to reboot your computer.



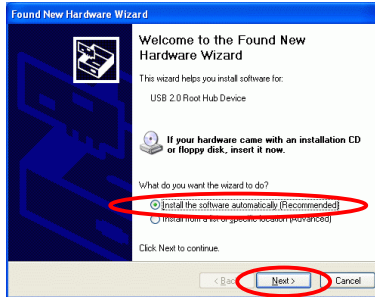
3. After restarting your computer, insert the USB2.0 CardBus PC Card into the PCMCIA CardBus slot and the system will automatically detect the device.
4. Follow the on-screen instruction to proceed. Select **Install the software automatically** and click **Next (Recommended)** .



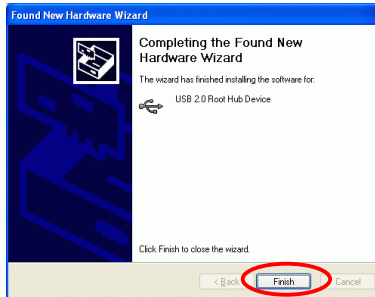
5. Click **Finish** to continue the installation.



6. Select **Install the Software Automatically (Recommended)** and click **Next**.



7. Click **Finish** to complete the installation.



8. To check if the device is well-installed, go to **My Computer**→**Properties**→**Hardware**→**Device Manager** If the **following items are listed**, it means your USB2.0 CardBus PC Card is successfully installed

