

# TU2-H5PI

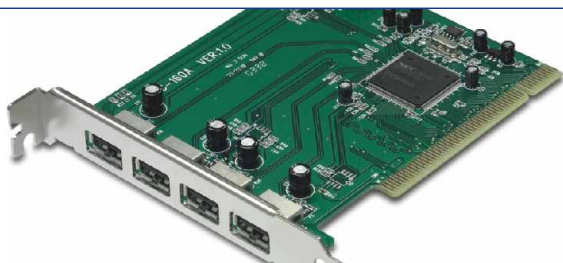
5-port USB 2.0 Host PCI Card  
Quick Installation Guide

Guide d'installation rapide de  
la carte PCI TU2-H5PI USB 2.0 à 5 ports

Anleitung zur Schnellinstallation der  
5-Port USB-2.0 Host PCI-Karte TU2-H5PI

Guía de Instalación Rápida para  
la Tarjeta PCI Anfitrión USB 2.0 de 5 puertos

Version 08.26.04



**TRENDnet**<sup>®</sup>  
TRENDware, USA  
**What's Next in Networking**

# Table of Contents

English .....	1
1. Prepare for Installation .....	1
2. Product Detail .....	2
3. Hardware Installation .....	3
4. Software Installation .....	4
5. Driver Installation .....	5
6. Verify Installation .....	10
Troubleshooting .....	13

# English QIG

## 1. Prepare for Installation

Thank you for purchasing the TRENDnet TU2-H5PI 5-port USB 2.0 Host PCI Card.

This guide will help you set-up your 5-port USB 2.0 Host PCI Card. Following the installations should be quick and easy. If you run into problems, please refer to the Troubleshooting section. If you need further technical support, please visit [www.TRENDNET.com](http://www.TRENDNET.com) or call technical support by phone.

### Verify Package Contents

Please make sure you have everything in the box:



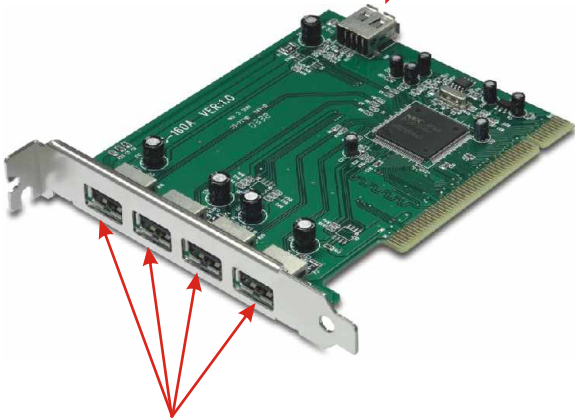
### Minimum System Requirements

1. Pentium 300Mhz or faster with at least 64MB RAM
2. Computer with an available 32-bit PCI slot
3. Windows XP, 2000, ME, 98SE or Mac OS X or later

## 2. Product Detail

The USB 2.0 Host PCI Card has 5 high speed USB ports.

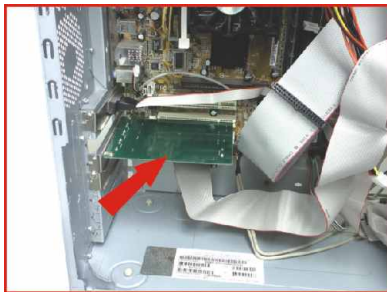
1 USB 2.0 port for connecting internal USB peripheral



4 USB 2.0 ports for connecting external USB peripherals

# 3. Hardware Installation

1. Be sure to run the software installation **FIRST** before you begin the hardware installation. Please see “**4. Driver Installation**”.
2. Open your computer case to reveal the motherboard and expansion slots. (Please refer to your computer's user manual if you need help opening the case)
3. Insert the USB PCI card into one of motherboard's free PCI slots. Press down firmly and evenly on the card until it snaps into place.



4. Close your computer case, and boot up your computer.

# 4. Software Installation

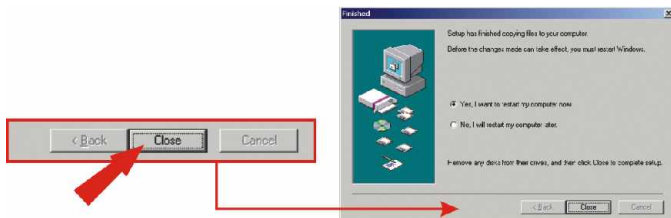
## Windows 98SE/ME/2000/XP

1. Insert the TU2-H5PI Driver CD-ROM into your computer's CD-ROM drive;
2. Double-click the **“My Computer”** icon on your Windows desktop.
3. Double-click the **“CD ROM”** drive, the **“Driver”** Folder, and the **“Windows”** Folder.
4. Double-click the file name **“U2v2\_062.exe”** to install the USB 2.0 Driver for Windows.



**Note:** TRENDnet's USB 2.0 Host PCI Card have been fully tested under all supported Windows Operating Systems and have been approved for their functionality. For Windows XP, you will see a message regarding “not passed Windows Logo testing”, click Continue Anyway.

5. Select **“No, I will restart my computer later”** and click **Close**.



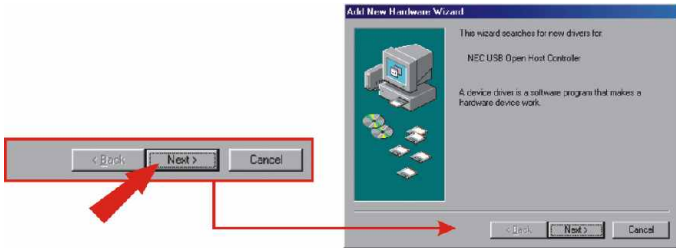
6. Shut down the computer, install the adapter according to the **Hardware Installation**, and then restart the computer.

# 5. Driver Installation

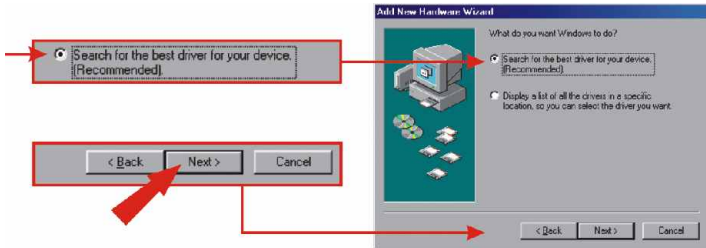
## Windows 98SE

After your computer reboots, the “Add New Hardware Wizard” will appear. Windows 98SE will automatically detect the newly installed hardware, and ask you to install a USB driver for the TU2-H5PI.

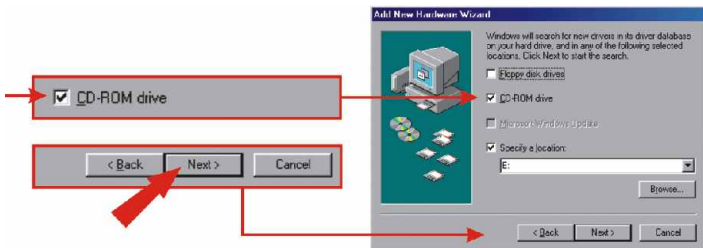
1. Click **Next**.



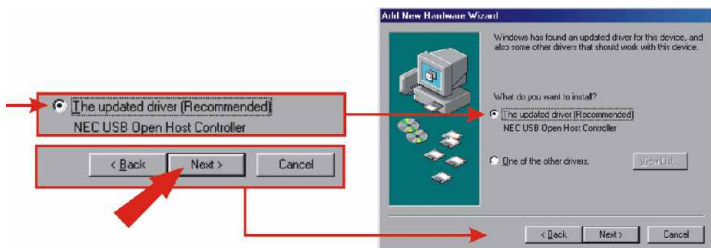
2. Select “Search for best driver for your device”, and then click **Next**.



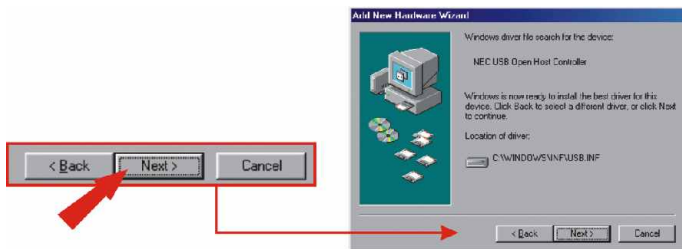
3. Select “CD-ROM drive”, and then click **Next**.



4. Select “The updated driver (recommended)”, and then click **Next**.



5. Click **Next**.

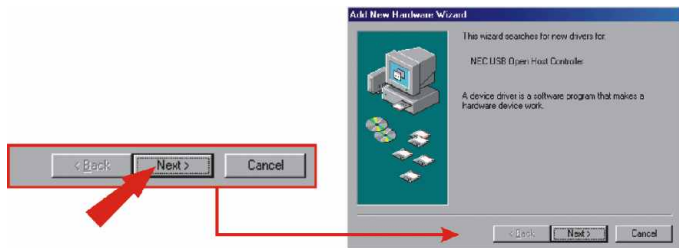


6. Insert the Windows 98SE CD-ROM into your computer's CD-ROM drive.





7. Click **OK**.



8. Repeat steps 4~7

**Congratulations!**  
Installation is now complete.

**NOTE:** Restart your computer for the new setting to take effect. If you would like to verify the TU2-H5PI has been installed properly for your windows, go to the Verify Installation section.

## **Windows ME/2000**

After your computer reboots, the “Found New Hardware” will appear. Windows Me/2000 will automatically detect and install the USB 2.0 driver for the TU2-H5PI.

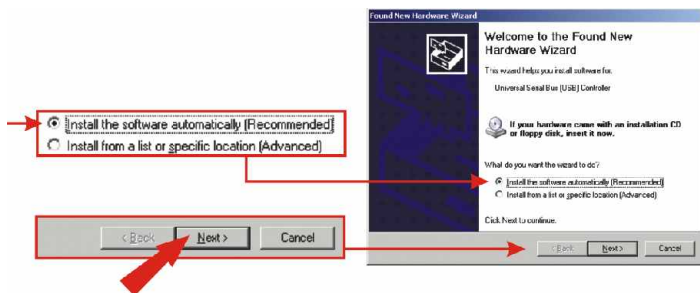
**Congratulations!**  
Installation is now complete.

**NOTE:** If you would like to verify that the TU2-H5PI has been installed properly for your windows, go to the Verify Installation section.

## Windows XP

After your computer reboots, the “**Found New Hardware Wizard**” will appear. Windows will automatically detect and install the USB driver for the TU2-H5PI.

1. Select “Install the software automatically (Recommended), and then click **Next**.

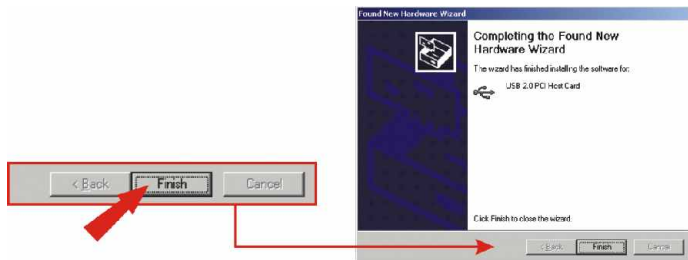


**NOTE:** TRENDnet's USB 2.0 Host PCI Card has been fully tested under all supported Windows Operating Systems and has been approved for their functionality.

2. Click **Continue Anyway**.



3. Click **Finish** for installing the USB 2.0 PCI Host Card.



4. Repeat steps 1~3 for installing USB 2.0 Root Hub Device.

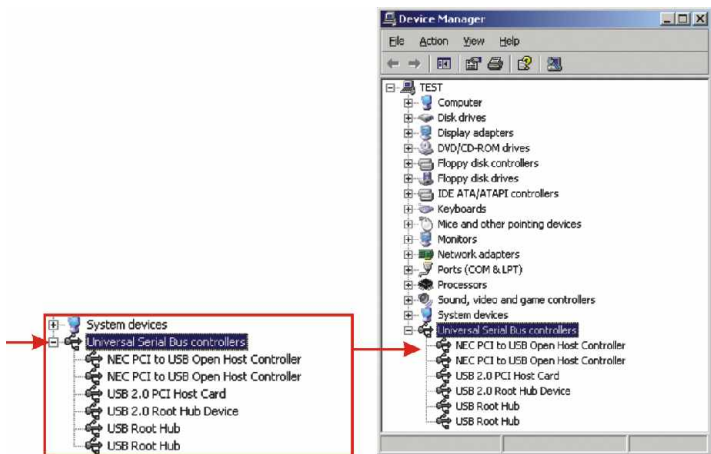
**Congratulations!**  
Installation is now complete.

**NOTE:** If you would like to verify that the TU2-H5PI has been installed properly for your Windows, go to the Verify Installation section.

# 6. Verify Installation

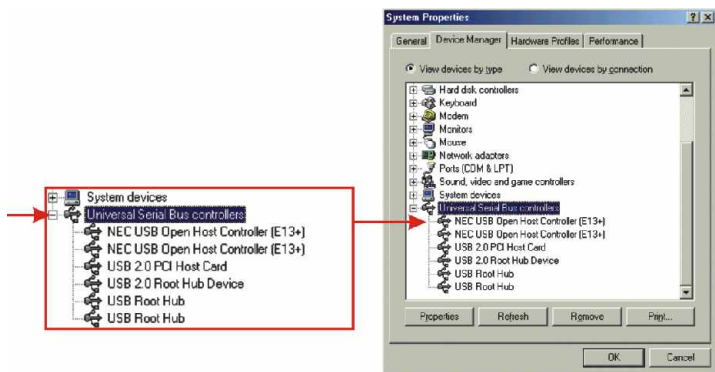
## Windows 98SE

1. Click **Start**, and then click **Control Panel**.
2. Double-click the System icon. On the Hardware tab, click **Device Manager** tab.
3. Expand the “**Universal Serial Bus controller**” heading to verify that the Universal Serial Bus controller has been installed.



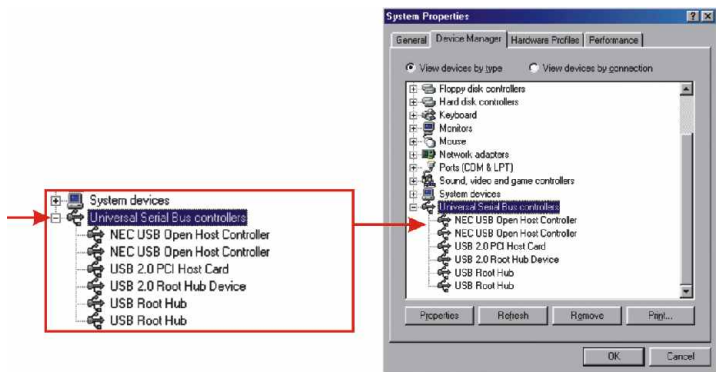
## Windows ME

1. Click **Start**, click Settings, then click on **Control Panel**.
2. Double-click the System icon, and click **Device Manager** tab.
3. Expand the “**Universal Serial Bus controller**” heading to verify that the Universal Serial Bus controller has been installed.



## Windows 2000/XP

1. Click **Start**, and then click **Control Panel**.
2. Double-click the **System** icon. On the **Hardware** tab, click the **Device Manager** button.
3. Expand the “Universal Serial Bus controller” heading to verify that the **Universal Serial Bus controller** has been installed.



# Troubleshooting

## **Q1. Can I connect or disconnect the USB cable while the computer is on?**

**A1.** Yes, you can connect or disconnect the USB cable, or any external USB device while the computer is on, because the USB interface is Plug-and-Play and hot-pluggable.

## **Q2. I have a USB 1.1 cable. Can it work with USB 2.0 devices?**

**A2.** Yes, it works but it may cause problems for connecting high-speed USB 2.0 external peripherals. Therefore it is recommended that you use certified USB 2.0 cable.

## **Q3. After successful installation of the TU2-H5PI USB 2.0 PCI Card, I connected my external USB device to the USB port, but it doesn't seem to work. What should I do?**

**A3.** If you have an external AC power adapter comes with the external USB device, connect the AC power adapter to the device and power on the device. Also make sure that you have installed the correct driver for your external USB device in Windows.

If you have any questions regarding the TU2-H5PI USB 2.0 PCI Card, please contact Trendware Technical Support Department.

### **Contact Technical Support**

Telephone: +1-310-626-6252  
Fax: +1-310-626-6267  
Website: [www.TRENDNET.com](http://www.TRENDNET.com)  
E-mail: [support@trendware.com](mailto:support@trendware.com)

### **Technical Support Hours**

7:00AM ~ 6:00PM, Monday through Friday  
Pacific Standard Time (except holidays)

### **Certifications**

This equipment has been tested and found to comply with Part 15 of the FCC Rules. Operation is subject to the following two conditions:

- (1) This device may not cause harmful interference.
- (2) This device must accept any interference received.  
Including interference that may cause undesired operation.

This equipment is in compliance with the requirements of the following regulations: EN 55 022:  
CLASS B



# TRENDnet<sup>®</sup>

TRENDware, USA

**What's Next in Networking**

## Product Warranty Registration

Please take a moment to register your product online.  
Go to TRENDware's website at <http://www.TRENDNET.com>

**TRENDware International, Inc.**  
3135 Kashiwa Street  
Torrance, CA 90505

**<http://www.TRENDNET.com>**