

# TU2-H2PC

2-PORT USB 2.0 CARDBUS PC CARD

## User's Guide



**TRENDnet**<sup>®</sup>  
TRENDware, USA  
What's Next in Networking

# TABLE OF CONTENTS

**Introduction**.....2

    Package Contents .....2

**Safety Instructions**.....2

**Specification**.....3

**System Requirements**.....3

**Hardware Installation**.....4

**Driver Installation**.....4

    Windows 98SE, ME.....4

    Windows 2000, XP, 2003.....10

    Mac OS X.....11

**Installation Verification**.....14

    Windows 98.....15

    Windows ME.....15

    Windows 2000.....15

    Windows XP/2003 Server.....16

**Certificate**.....17

    Disclaimer.....17

## **Introduction**

Thank you for purchasing our USB 2.0 2-Port CardBus PC Card. This handy device is certified to USB 2.0 standards and is backward compatible with USB 1.1 devices, i.e. your existing USB 1.1 devices can function as usual. It also allows you to connect multiple peripherals devices to your PC at the same time. This high-speed USB 2.0 2-Ports CardBus PC Card improves performance of connected devices by providing a full 480Mbps of data transmit speed (40 times faster than USB 1.1 and 20% faster than IEEE 1394 FireWire), making it ideal for instant and massive data transfer.

## **Package Contents**

- 1 x USB 2.0 2-Port CardBus PC Card
- 1 x Driver CD
- 1 x Multi-Language Quick Installation Guide

## **Safety Instructions**

1. Always read the safety instructions carefully.
2. Keep the User's Manual for reference.
3. Lay this equipment on a reliable flat surface before setting it up.
4. If any of the following situations arises, please contact a service technician for diagnostics:
  - The equipment has been exposed to moisture
  - The equipment has been dropped or damaged
  - If the equipment has an obvious sign of breakage
  - The equipment has not been working well or it is still not functioning after you refer to the User's Manual

## **Specification**

- Compliant with Universal Serial Bus Specification Revision 2.0
- Compliant with Universal Serial Bus Specification Version 2.0 (Data rate 1.5/12/480 Mbps) transfer speeds of up to 480 Mbps
- Compliant with Open Host Controller Interface Specification for USB 1.0a
- Compliant with Enhanced Host Controller Interface Specification for USB 1.0
- Provides 2 External USB2.0 Type-A Ports
- Automatically Switches to the Peripheral's Highest Supported Speed
- Supports 32-Bit CardBus Type II Slots
- Improves peripheral performance for: Scanners, PC Cameras, Printer, Device Storage Units, Broadband Network Connections
- Transfer Rate: 1.5/12/480 Mbps
- USB Spec: v2.0 and v1.1 Compatible
- Operating Temperature: 5°C ~ 40°C
- Storage Temperature: 0°C ~70°C
- Humidity: 0 ~ 80%

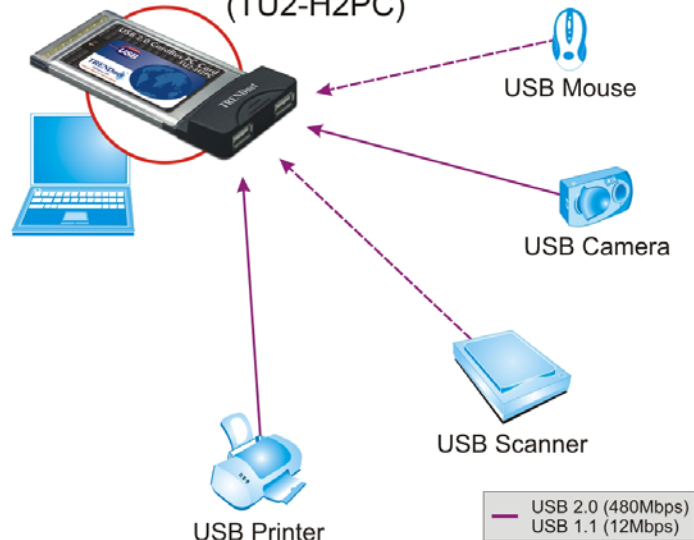
## **System Requirements**

- IBM compatible PC or Mac system with available CardBus port
- With one of the following operating systems:
  - Windows® 98 SE
  - Windows® ME
  - Windows® 2000
  - Windows® XP
  - Windows® 2003 Server
  - Mac OS 10.x or above

## Hardware Installation

Please find the CardBus port of your system, and insert the USB 2.0 2-Port CardBus Card into the port. The USB 2.0 2 Ports CardBus Card supports hot-swappable, there is no need to turn off your system before the installation.

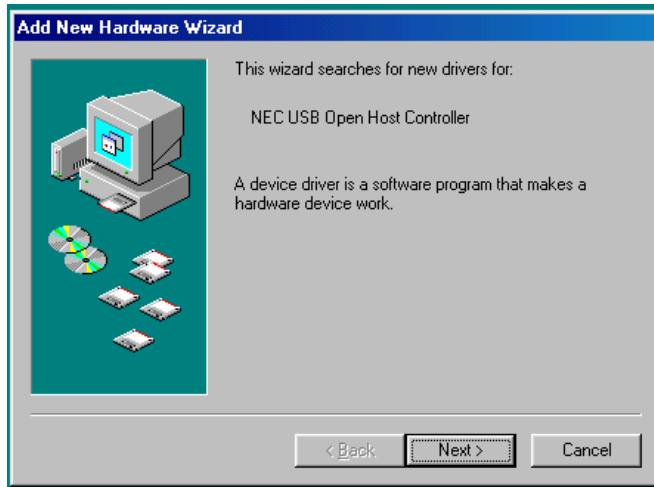
### **2-Port USB 2.0 CardBus PC Card (TU2-H2PC)**



## Driver Installation

### Windows 98SE, ME

1. After the CardBus Card has been inserted into the CardBus slot, the system displays **This wizard searches for new drives for: NEC USB Open Host Controller**, please click **Next**



2. Please select **Search for the best driver for your device. (Recommended)**, and click **Next**.



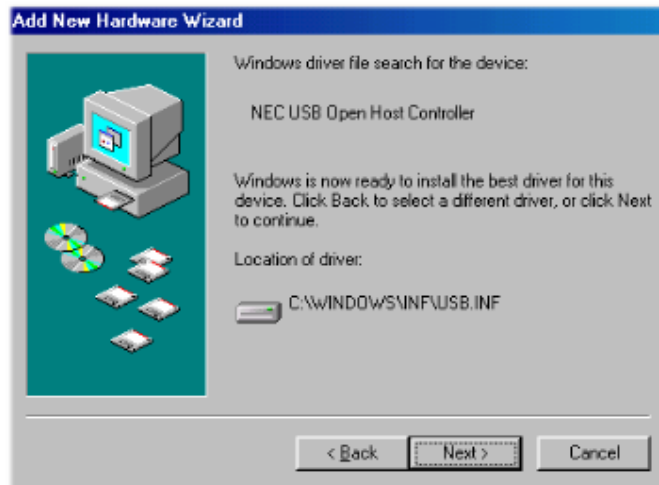
3. Do not select any option, and click **Next**.



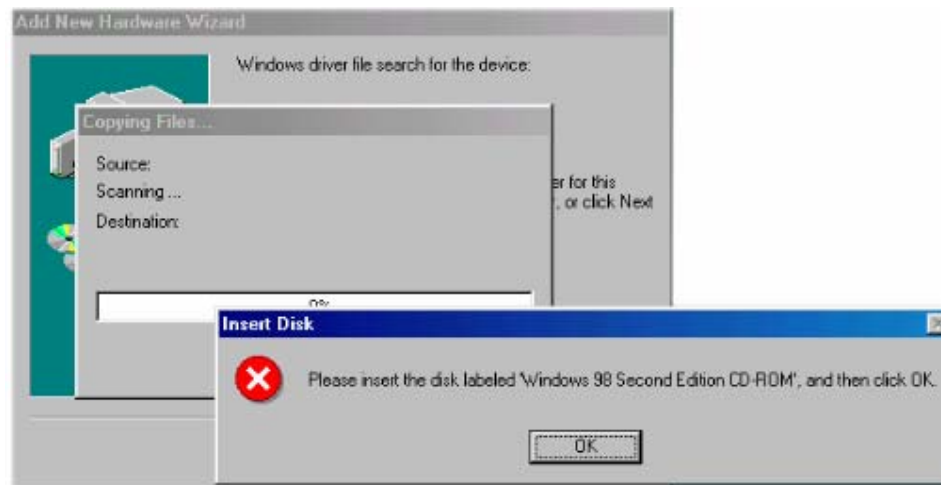
4. Select **The updated driver (Recommended)**, and click **Next**



5. When the system displays **Windows driver file search for the device: NEC USB Open Host Controller**, please click **Next**.



6. Please insert Win98 SE CD-ROM into the CD-ROM Drive when the system requests as below, and click **OK**.

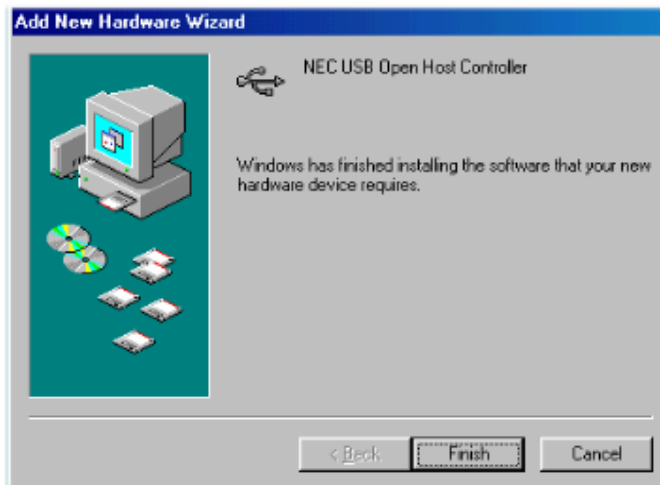




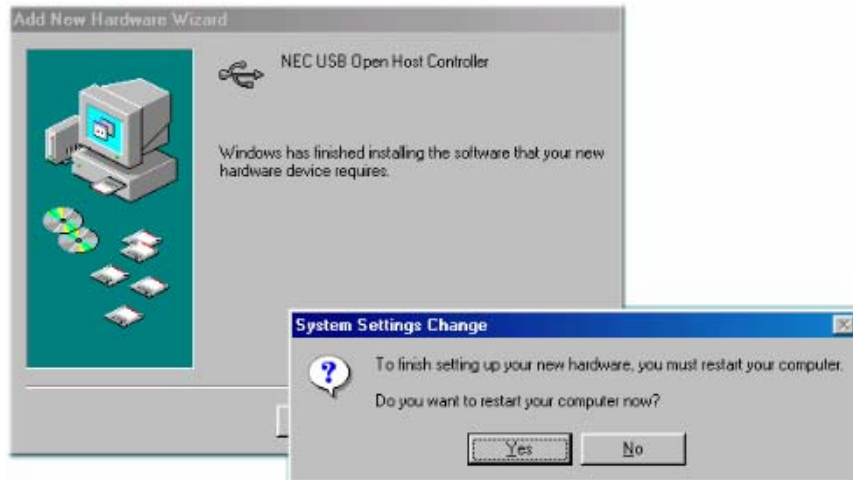
7. Please browse the location of the driver in the Win98SE CD-ROM and click **OK**.



8. Please click **Finish**.



9. Click **Yes** when the system requests you to restart your computer.



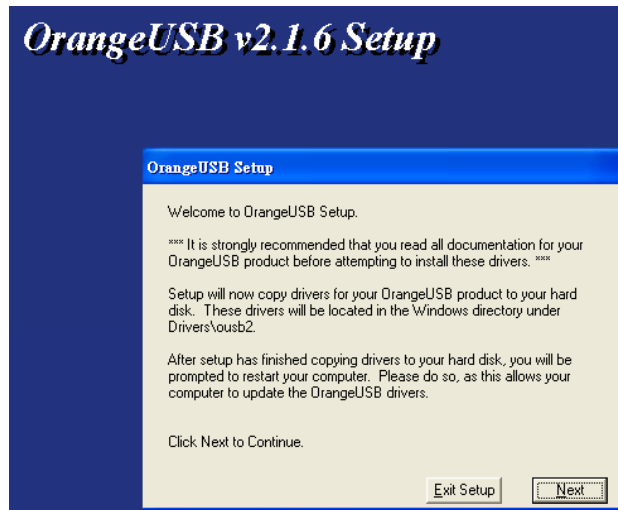
10. After the system restarted, please insert the attached CD-ROM into the CD-ROM drive and double-click the **Setup.exe** file in the **F:\Driver\Windows** folder (F means the CD-ROM drive).

11. Follow the instructions to finish the installation.



### **Windows 2000, XP, 2003**

1. Make sure the CardBus is inserted into the CardBus slot and turn on power then insert the attached driver CD-ROM into CD-ROM drive
2. The system will detect the new device, and there will be a pop-up window, please click Cancel button as needed.
3. Double-click the **Setup.exe** file in the **F:\Driver\Windows** folder (F means the CD-ROM drive),.
4. Follow the instructions to finish the installation.



## Mac OS X

1. Click **USB2EHCI-v1072.img.bin** in the CD-ROM drive, and it will generate **USB2EHCI\_v1064.img**



2. Click **USB2EHCI\_v1072.img**, it will generate **USB2EHCI-v1072** on Desktop



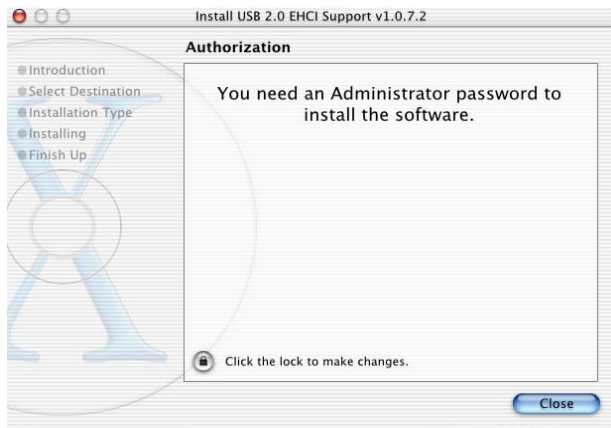
3. Click **USB2EHCI-v1072** on Desktop, there will be a pop-up window.



4. Click **USB2EHCI\_v1072**.



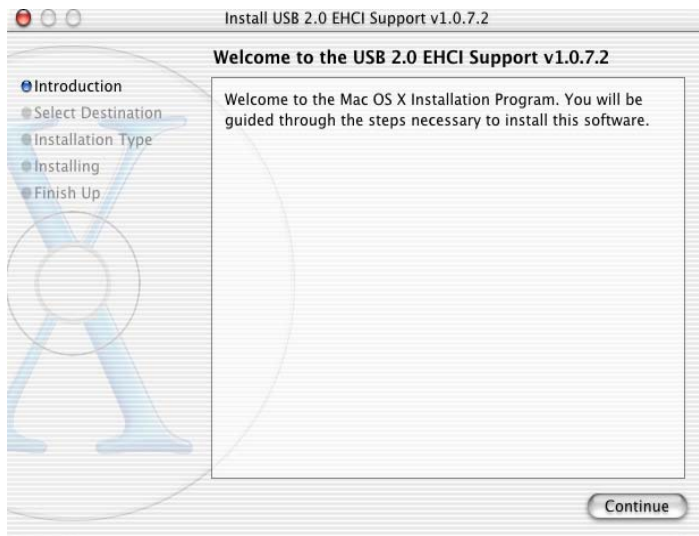
5. Please click the  to make changes.



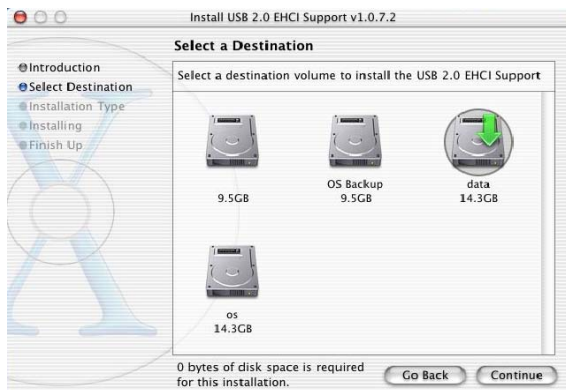
6. Enter the name and password, and click **OK**.



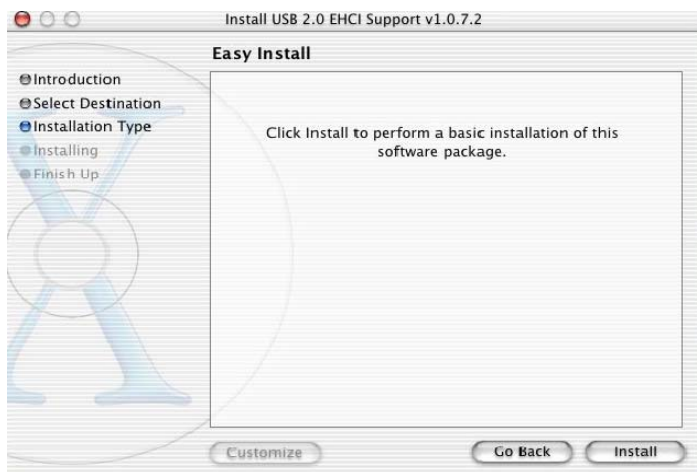
7. Click **Continue**



8. Please select a appropriate destination to install driver, and click **Continue**



9. Click **Install**.



10. Click **Continue Installation**

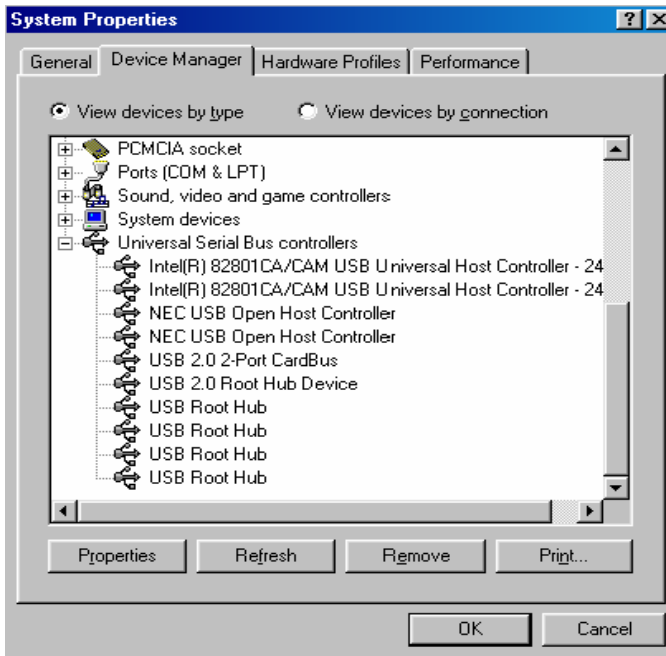


12. Click **Restart**. After restarting the system, the device is ready to be used.

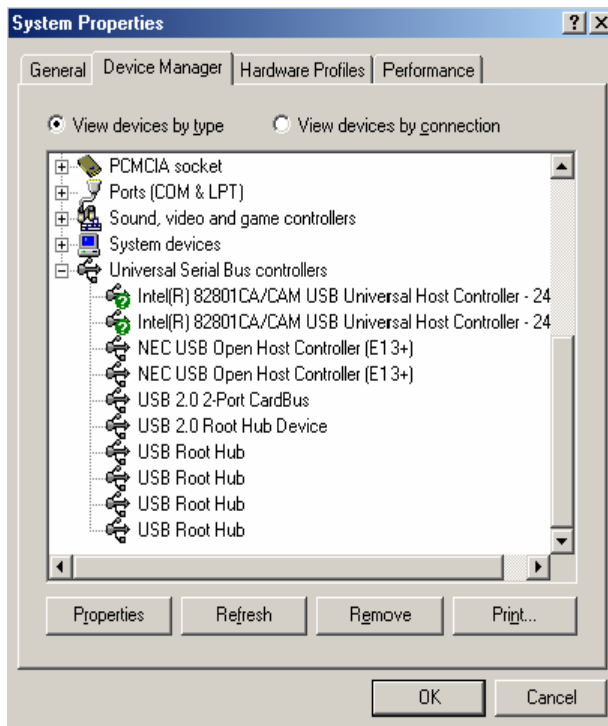


## Installation Verification

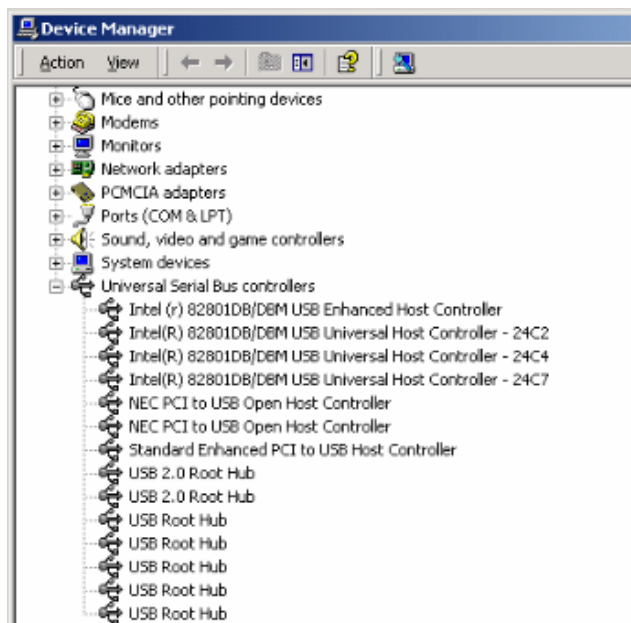
### Windows 98 SE



## Windows ME

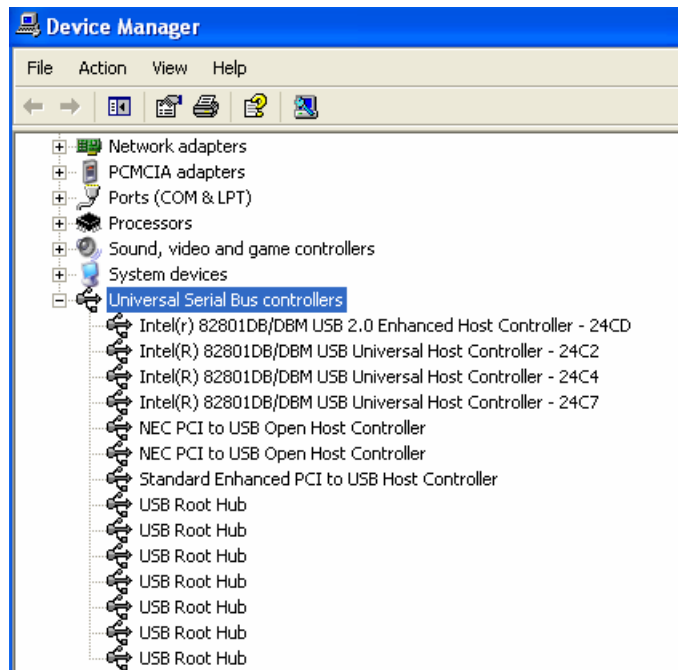


## Windows 2000





## Windows XP/2003 Server



## **Certificate**

### **FCC**

This equipment has been tested and found to comply with Part 15 of the FCC Rules. Operation is subject to the following two conditions:

- (1) This device may not cause harmful interference
- (2) This device must accept any interference received, including interference that may cause undesired operation.

### **CE – Certificate**

This equipment is in compliance with the requirements of the following regulations: EN 55 022: CLASS B



## **Disclaimer**

Information in this document is subject to change without notice. The manufacturer does not make any representations or warranties (implied or otherwise) regarding the accuracy and completeness of this document and shall no event be liable for any loss of profit or any commercial damage, including but not limited to special, incidental, consequential, or other damage. No part of this document can be reproduced or transmitted in any form by any means, electronic or mechanical, including photocopying, recording or information recording and retrieval systems without the express written permission of the manufacturer.

# Limited Warranty

TRENDware warrants its products against defects in material and workmanship, under normal use and service, for the following lengths of time from the date of purchase.

## TU2-H2PC – 2 Years Warranty

If a product does not operate as warranted above during the applicable warranty period, TRENDware shall, at its option and expense, repair the defective product or part, deliver to customer an equivalent product or part to replace the defective item, or refund to customer the purchase price paid for the defective product.

All products that are replaced will become the property of TRENDware.

Replacement products may be new or reconditioned.

TRENDware shall not be responsible for any software, firmware, information, or memory data of customer contained in, stored on, or integrated with any products returned to TRENDware pursuant to any warranty.

There are no user serviceable parts inside the product. Do not remove or attempt to service the product by any unauthorized service center. This warranty is voided if (i) the product has been modified or repaired by any unauthorized service center, (ii) the product was subject to accident, abuse, or improper use (iii) the product was subject to conditions more severe than those specified in the manual.

Warranty service may be obtained by contacting TRENDware office within the applicable warranty period for a Return Material Authorization (RMA) number, accompanied by a copy of the dated proof of the purchase. Products returned to TRENDware must be pre-authorized by TRENDware with RMA number marked on the outside of the package, and sent prepaid, insured and packaged appropriately for safe shipment.

**WARRANTIES EXCLUSIVE:** IF THE TRENDWARE PRODUCT DOES NOT OPERATE AS WARRANTED ABOVE, THE CUSTOMER'S SOLE REMEDY

SHALL BE, AT TRENDWARE'S OPTION, REPAIR OR REPLACEMENT. THE FOREGOING WARRANTIES AND REMEDIES ARE EXCLUSIVE AND ARE IN LIEU OF ALL OTHER WARRANTIES, EXPRESSED OR IMPLIED, EITHER IN FACT OR BY OPERATION OF LAW, STATUTORY OR OTHERWISE, INCLUDING WARRANTIES OF MERCHANTABILITY AND FITNESS FOR A PARTICULAR PURPOSE. TRENDWARE NEITHER ASSUMES NOR AUTHORIZES ANY OTHER PERSON TO ASSUME FOR IT ANY OTHER LIABILITY IN CONNECTION WITH THE SALE, INSTALLATION MAINTENANCE OR USE OF TRENDWARE'S PRODUCTS.

TRENDWARE SHALL NOT BE LIABLE UNDER THIS WARRANTY IF ITS TESTING AND EXAMINATION DISCLOSE THAT THE ALLEGED DEFECT IN THE PRODUCT DOES NOT EXIST OR WAS CAUSED BY CUSTOMER'S OR ANY THIRD PERSON'S MISUSE, NEGLIGENCE, IMPROPER INSTALLATION OR TESTING, UNAUTHORIZED ATTEMPTS TO REPAIR OR MODIFY, OR ANY OTHER CAUSE BEYOND THE RANGE OF THE INTENDED USE, OR BY ACCIDENT, FIRE, LIGHTNING, OR OTHER HAZARD.

LIMITATION OF LIABILITY: TO THE FULL EXTENT ALLOWED BY LAW TRENDWARE ALSO EXCLUDES FOR ITSELF AND ITS SUPPLIERS ANY LIABILITY, WHETHER BASED IN CONTRACT OR TORT (INCLUDING NEGLIGENCE), FOR INCIDENTAL, CONSEQUENTIAL, INDIRECT, SPECIAL, OR PUNITIVE DAMAGES OF ANY KIND, OR FOR LOSS OF REVENUE OR PROFITS, LOSS OF BUSINESS, LOSS OF INFORMATION OR DATA, OR OTHER FINANCIAL LOSS ARISING OUT OF OR IN CONNECTION WITH THE SALE, INSTALLATION, MAINTENANCE, USE, PERFORMANCE, FAILURE, OR INTERRUPTION OF THE POSSIBILITY OF SUCH DAMAGES, AND LIMITS ITS LIABILITY TO REPAIR, REPLACEMENT, OR REFUND OF THE PURCHASE PRICE PAID, AT TRENDWARE'S OPTION. THIS DISCLAIMER OF LIABILITY FOR DAMAGES WILL NOT BE AFFECTED IF ANY REMEDY PROVIDED HEREIN SHALL FAIL OF ITS ESSENTIAL PURPOSE.

**Governing Law:** This Limited Warranty shall be governed by the laws of the state of California.

AC/DC Power Adapter, Cooling Fan, and Power Supply carry

1 Year Warranty



### Product Warranty Registration

Please take a moment to register your product online.  
 Go to TRENDware's website at <http://www.TRENDNET.com>

### TRENDnet Technical Support

US/Canada Support Center	European Support Center
<p><b>Contact</b>  <b>Telephone:</b> 1(310) 626-6252  <b>Fax:</b> 1(310) 626-6267  <b>Email:</b> <a href="mailto:support@trendnet.com">support@trendnet.com</a></p> <p><b>Tech Support Hours</b>            7:30am - 6:00pm Pacific Standard Time            Monday - Friday</p>	<p><b>Contact</b>  <b>Telephone</b>            Deutsch : +49 (0) 6331 / 268-460            Français : +49 (0) 6331 / 268-461                              08-00-90-71-61 (numéro vert)            Español : +49 (0) 6331 / 268-462            English : +49 (0) 6331 / 268-463            Italiano : +49 (0) 6331 / 268-464            Dutch : +49 (0) 6331 / 268-465  <b>Fax:</b> +49 (0) 6331 / 268-466</p> <p><b>Tech Support Hours</b>            8:00am - 6:00pm Middle European Time            Monday - Friday</p>

**TRENDware International, Inc.**  
 3135 Kashiwa Street. Torrance, CA 90505  
<http://www.TRENDNET.com>

Copyright ©2005. All Rights Reserved. TRENDware International, Inc.