

User's Guide



# USB to Gigabit Ethernet Adapter

TU2-ETG

Version 2.01

## Contents

<b>Product Overview</b> .....	<b>2</b>
Package Contents .....	2
Features .....	2
Product Hardware Features .....	3
Application Diagram .....	3
<b>Windows Installation</b> .....	<b>4</b>
For Windows 7/ Vista / XP .....	4
Verifying the Driver Installation in Windows.....	5
TCP/IP Setting in Windows.....	6
<b>Mac Installation</b> .....	<b>10</b>
Mac 10.7 .....	10
Mac 10.6 .....	13
Mac 10.5 .....	15
Mac 10.4 .....	17
Verifying the Driver Installation on Mac .....	20
TCP/IP Setting in Mac .....	20
<b>Technical Specifications</b> .....	<b>24</b>
<b>Limited Warranty</b> .....	<b>25</b>

## Product Overview



**TU2-ETG**

### Package Contents

The package includes:

- TU2-ETG
- Quick Installation Guide
- CD-ROM (Driver & User's Guide)

If any package contents are missing or damaged, please contact the retail store, online retailer, or reseller/distributor that the item was purchased.

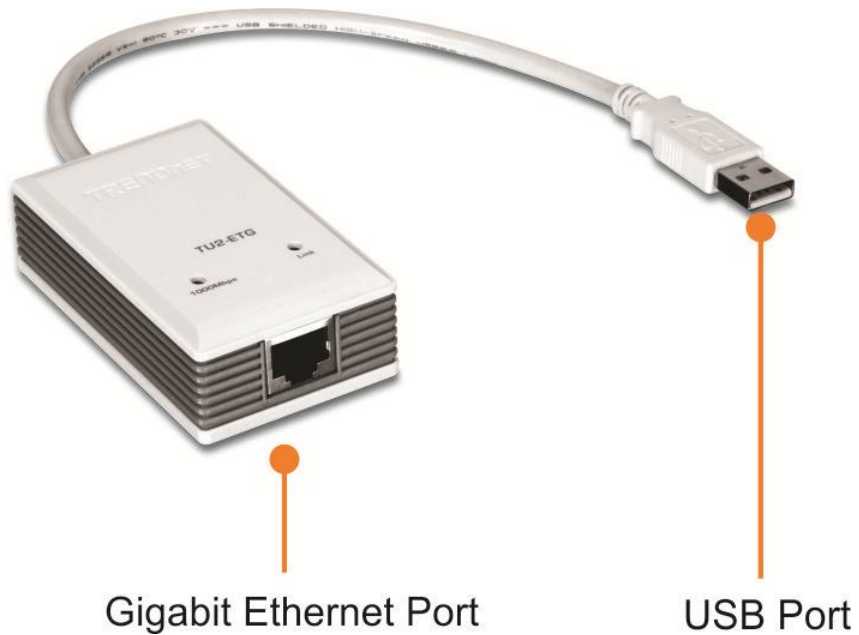
### Features

The TU2-ETG is a Gigabit USB network adapter that allows you to instantly connect to a 10/100/1000Mbps network from a USB enabled desktop or Notebook PC. Compliant with USB 2.0 and backwards compatible with the USB 1.0 and 1.1, you can share files and printers and also gain access to broadband Internet to explore valuable resources on the web.

- Connect your laptop or PC at Gigabit speeds
- Quickly share data, music, movies and more
- Compact design is ideal for on the go professionals.

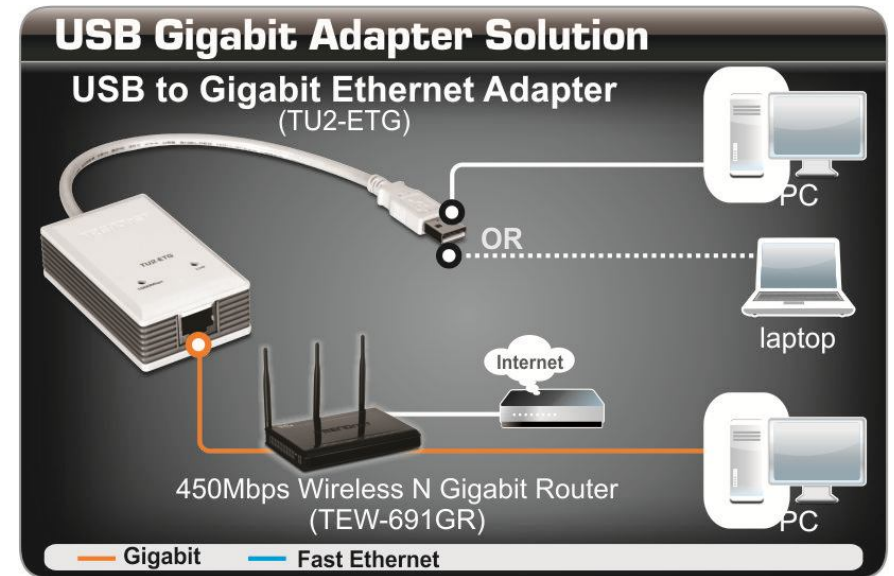
## Product Hardware Features

### Product View



- **Gigabit Ethernet Port** – Connect one end of the network cable to Gigabit Ethernet Port and the other end to your Gigabit Router.
- **USB Port** – Connect the USB port to your computer.

## Application Diagram



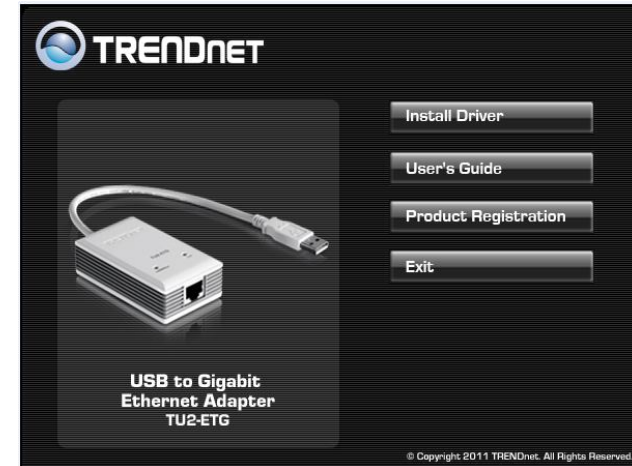
## Windows Installation

### For Windows 7/ Vista / XP

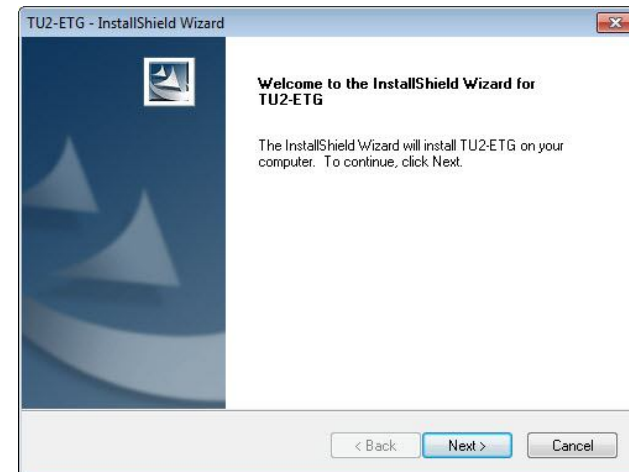
1. Insert the Driver CD-ROM into your CD-ROM Drive.
2. Click **Run Install.exe** (Windows 7 & Vista only)



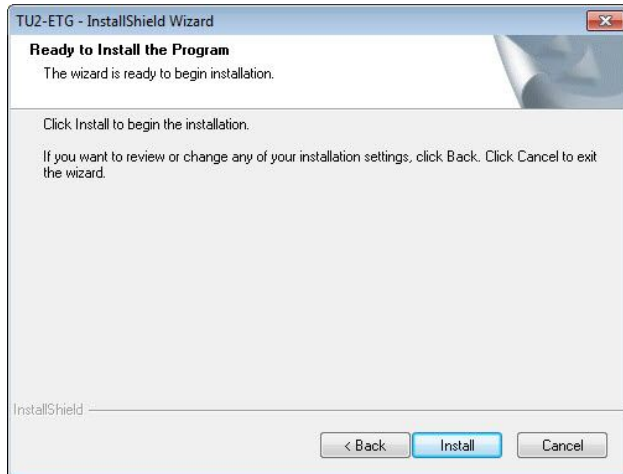
3. Click **Install Driver** to install the driver.



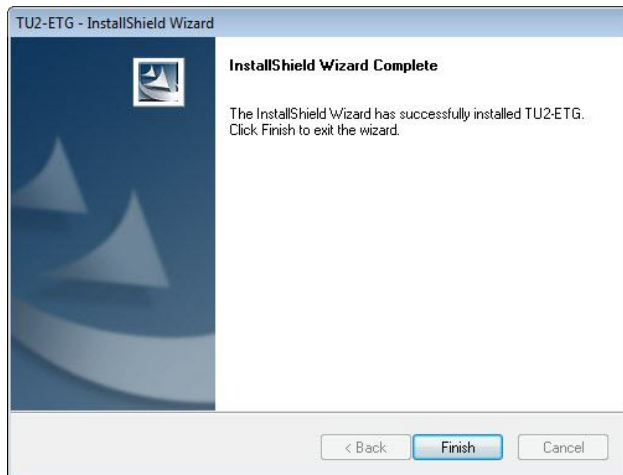
4. Click **Next**.



5. Click **Install**.



6. Click **Finish**.



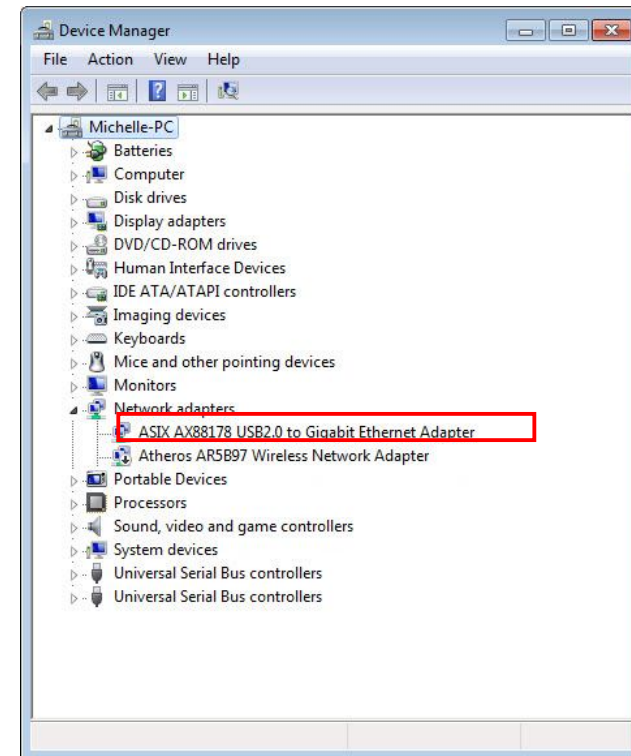
7. Remove the CD-ROM from your computer's CD-ROM drive.  
8. Connect the adapter to an available USB port on your computer

9. The adapter's drivers will install automatically.  
10. Connect a network cable from the TU2-ETG to a switch, router or cable/DSL modem.

### Verifying the Driver Installation in Windows

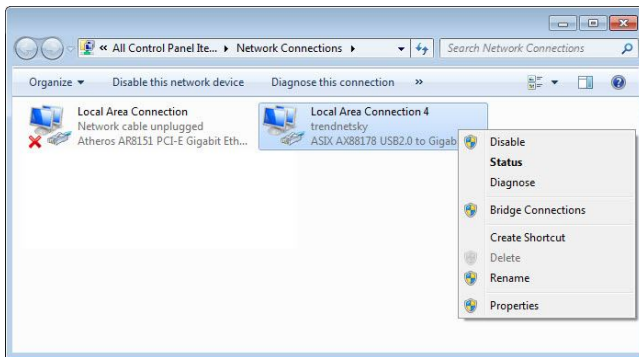
To verify the driver installation on your Ethernet adapter, please launch **Device Manager** through the steps below.

- On Windows® 7/Vista: Right-click on the **Computer** icon on the desktop and select **Properties > Device Manager**.
- On Windows® XP: Right-click on the **My Computer** icon on the desktop and select **Properties > System > (Hardware) > Device Manager**.

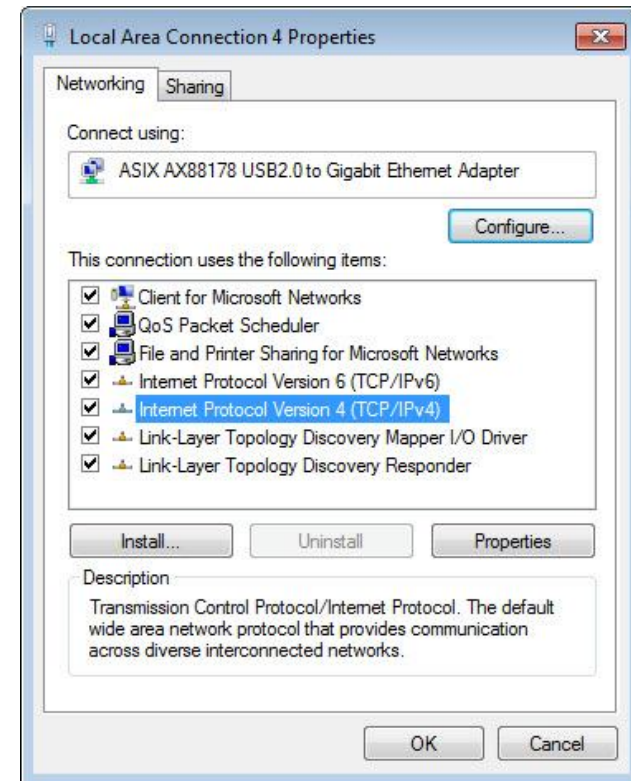


## TCP/IP Setting in Windows

1. Click **Start, Control Panel** and, then click **Network and Sharing Center**, and then clicking **Change Adapter settings**
2. Right-click on the **Local Area Connection** of the adapter, and then click **Properties**.

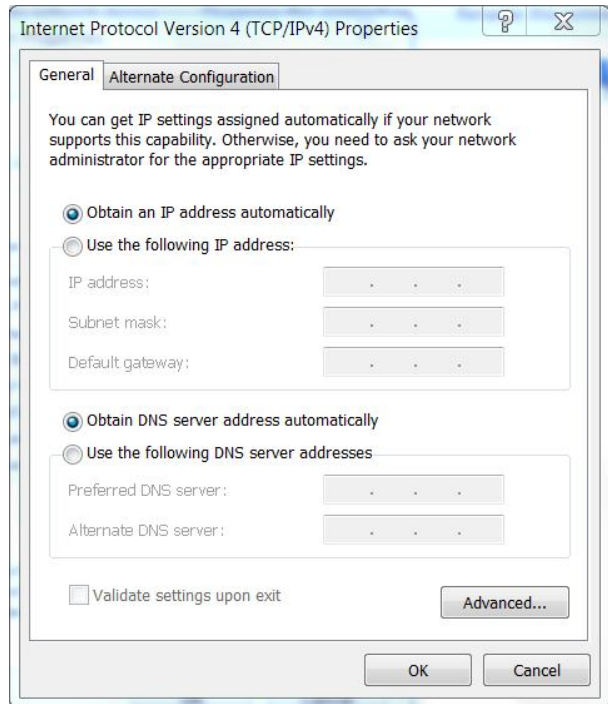


3. Under **Networking** tab, click **Internet Protocol Version 4 (TCP/IPv4) for IPv4 setting or Internet Protocol Version 6 (TCP/IPv6) for IPv6 setting**, and then click **Properties**.

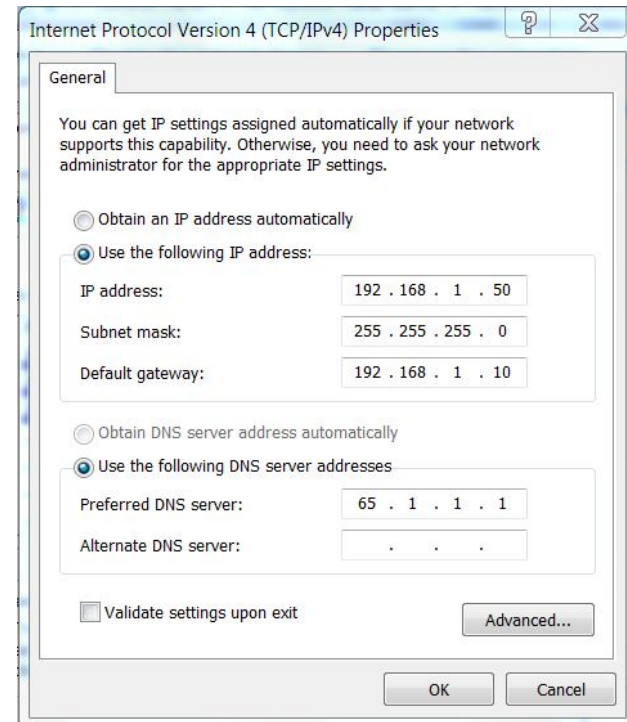


#### 4. Setup the IPv4 IP address:

- To obtain IP settings automatically, click **Obtain an IP address automatically**, and then click **OK**.



- To manual setup the IP address, select **User the following IPv4 address**, then enter IP address on the **IP address**, **Subnet Mask**, and **Default gateway** boxes, and then specify the IP address on the **Preferred DNS server** and **Alternate DNS server** boxes, and then click **OK**.

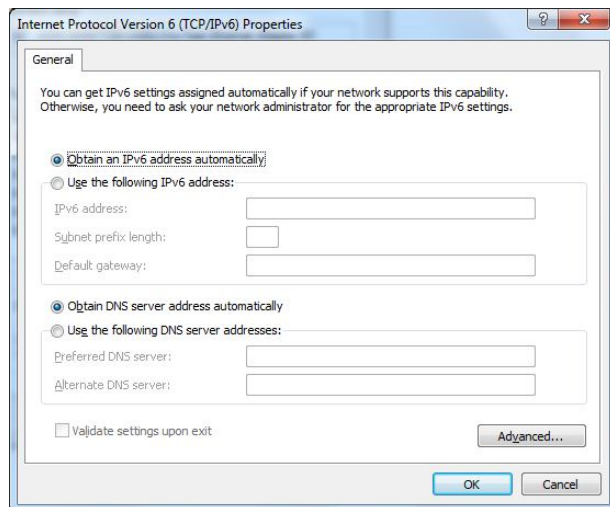




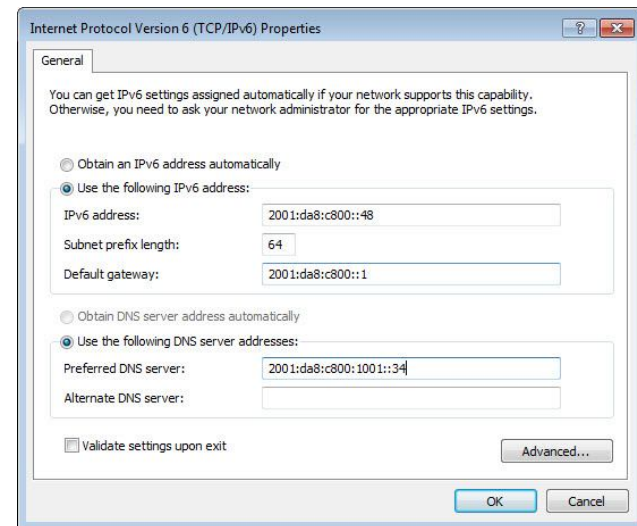
### 5. Setup IPv6 IP address settings:

Note: On Windows XP Operating System, it required to install IPv6 protocol in order to setup the IPv6 IP . Please follow the **Install IPv6 protocol in Windows XP** on next section for instruction.

- To obtain IP settings automatically, click **Obtain an IPv6 address automatically and Obtain DNS server address automatically**, and then click **OK**.

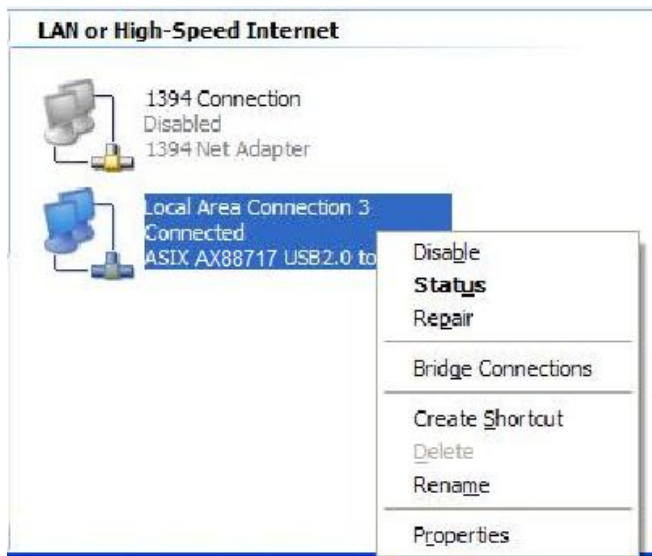


- To manual setup the IP address, select **User the following IPv6 address**, then enter IP address on the **IPv6 address**, **Subnet prefix length**, and **Default gateway** boxes, and then specify the IP address on the **Preferred DNS server** and **Alternate DNS server** boxes, and then click **OK**.

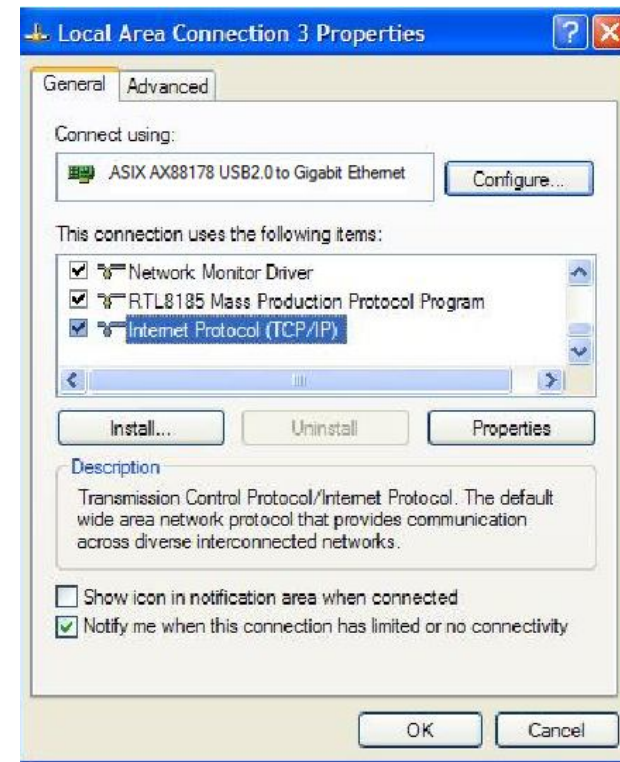


## Install IPv6 Protocol in Windows XP

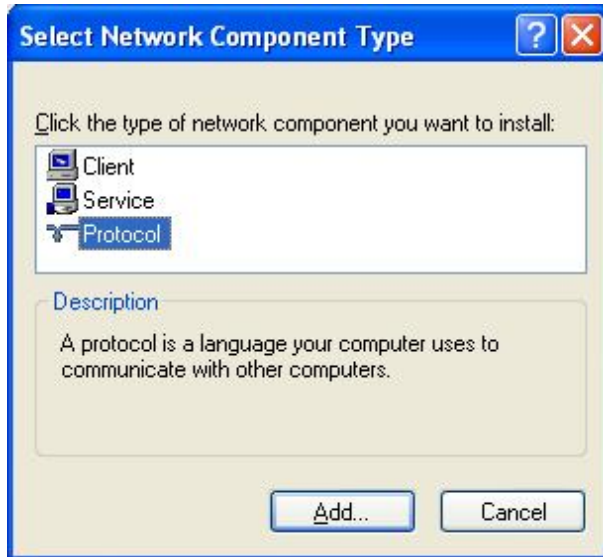
1. Click **Start**, click **Control Panel**, click **Network and Internet Connections**, and then click **Network Connections**.
2. Right-click the network connection that you want to configure, and then click **Properties**.



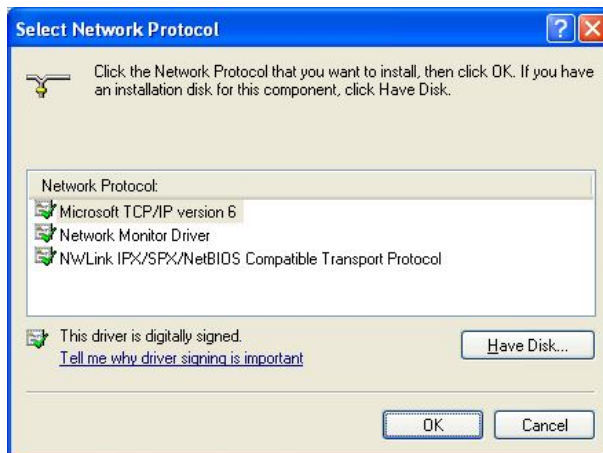
3. Under **General** tab, click **Install**.



- Click **Protocol**, and then click **Add**.



- Click **Microsoft TCP/IP version 6**, and then click **OK**.



- Click Close to save changes to your network connection.

## Mac Installation

---

**Note:** DO NOT connect the Ethernet adapter to your computer before completing the driver installation.

---

### Mac 10.7

- Insert the provided driver CD into your CD-ROM drive. Double-click the CD and navigate to the directory of `\Driver\Mac_OSX10.7`

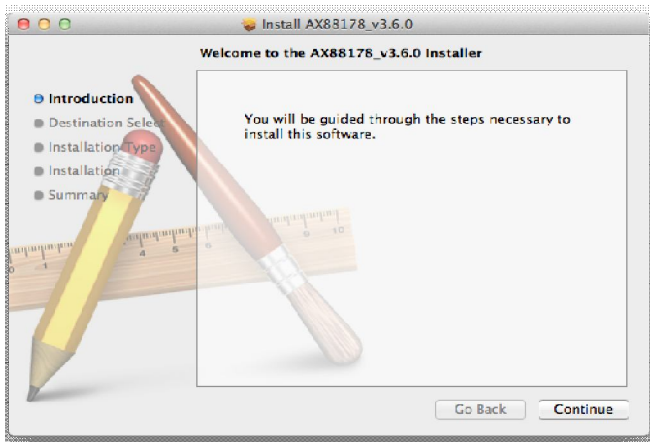


TU2-ETG

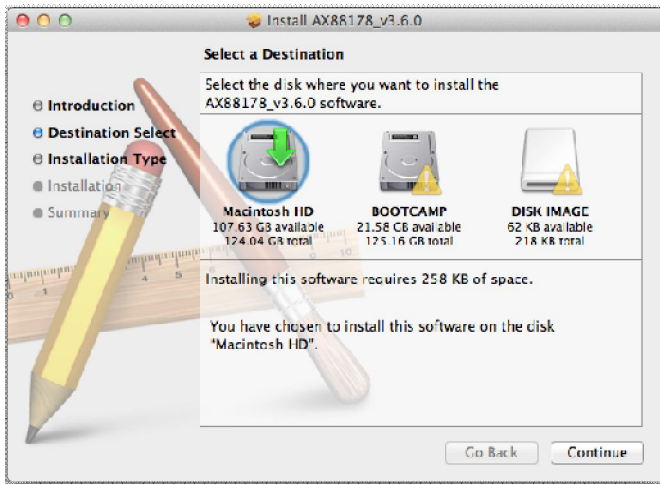
- In the directory of Mac10.x, please double-click **AX88178\_v3.6.0** to execute the installer program.



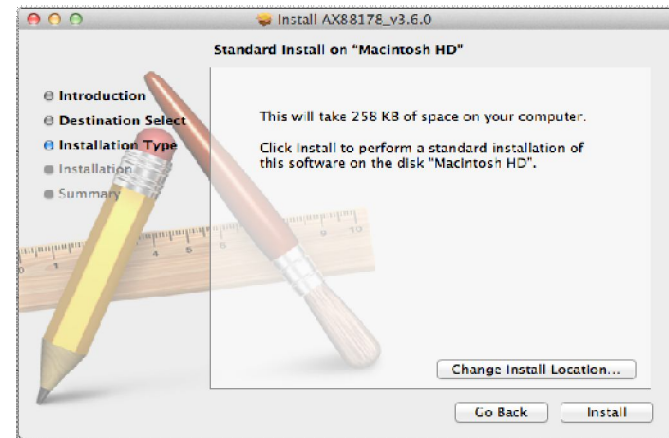
3. Please click **Continue** to install this software.



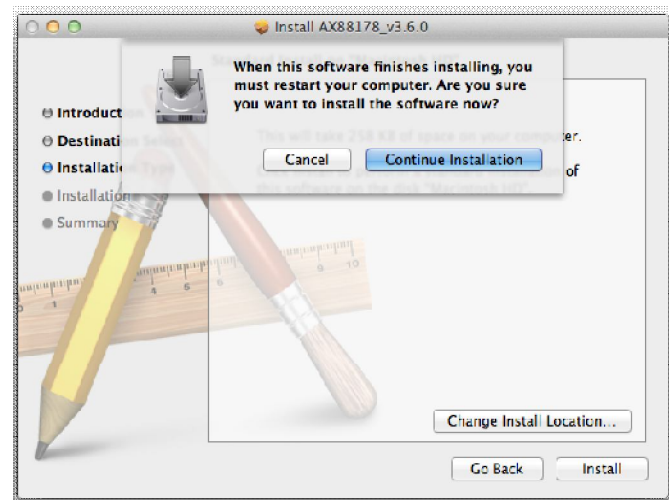
4. Select a destination driver to install the driver and click **Continue**.



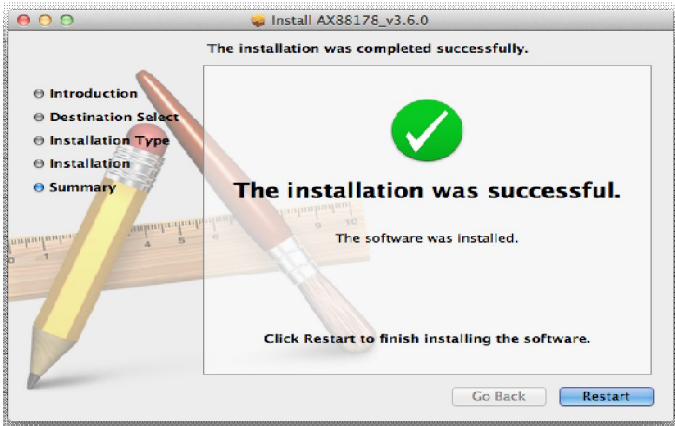
5. Click **Install**.



6. Click **Continue Installation**.



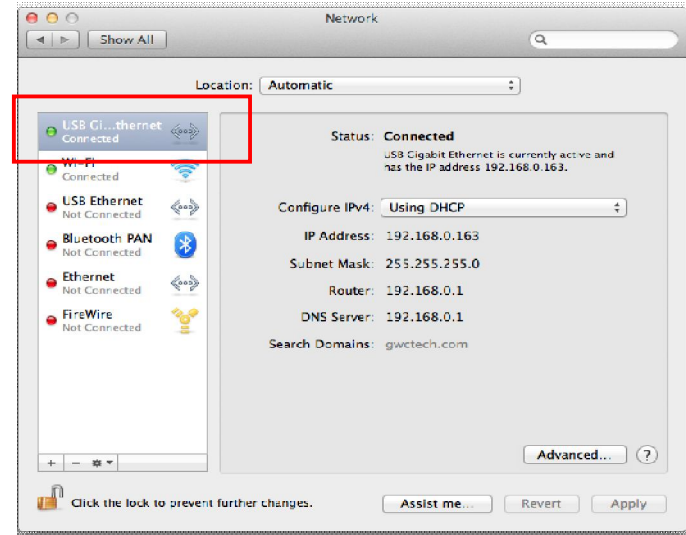
- Click "Restart", the computer will be restarted once installation is completed.



- Connect the TU2-ETG to a free USB port.
- Start **System Preferences** and select **Network**, the following screen will appear. Start **System Preferences** and select **Network**, you'll see the screen as below prompted and please select **OK**.



- You will find that a new Ethernet network interface is available.



Now the installation is complete. You can connect the adapter to a network device by an Ethernet cable.

The Link LED should light up green to indicate a proper physical connection between the Ethernet adapter and the network. If the Link LED doesn't light up, please verify the cable connections between all the network devices.

**Mac 10.6**

1. Insert the provided driver CD into your CD-ROM drive. Double-click the CD and navigate to the directory of \Driver\Mac\_OSX10.4-10.6



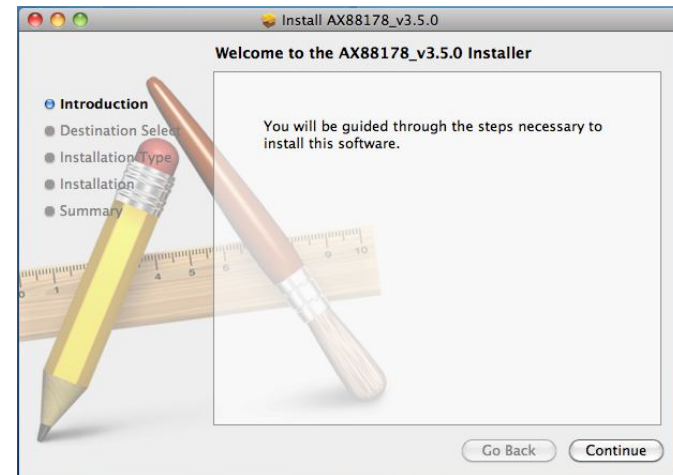
2. Double-click **AX88178.dmg** to mount the driver installer image .



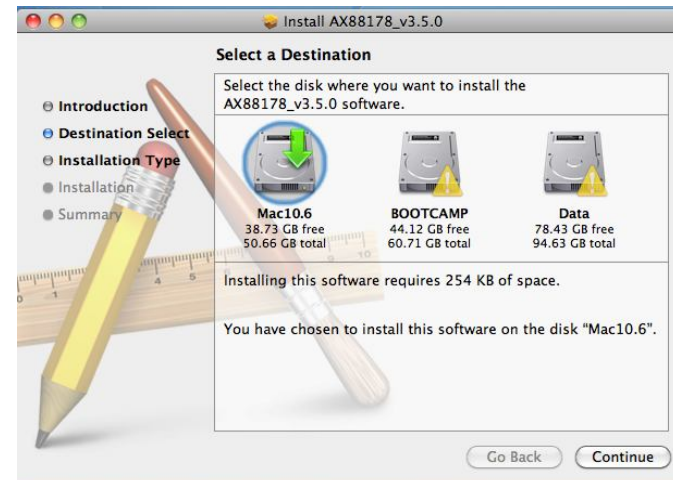
3. Double-click **AX88178\_v3.5.0** to execute the installer program.



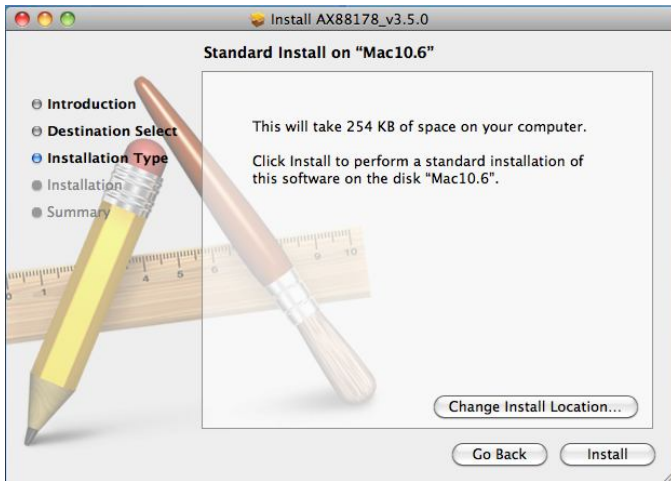
4. Click **Continue** to install this software.



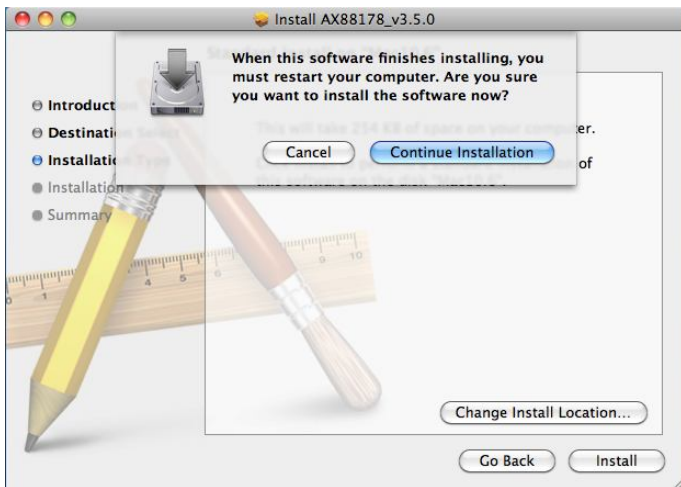
5. Select a destination driver to install the driver and click **Continue**.



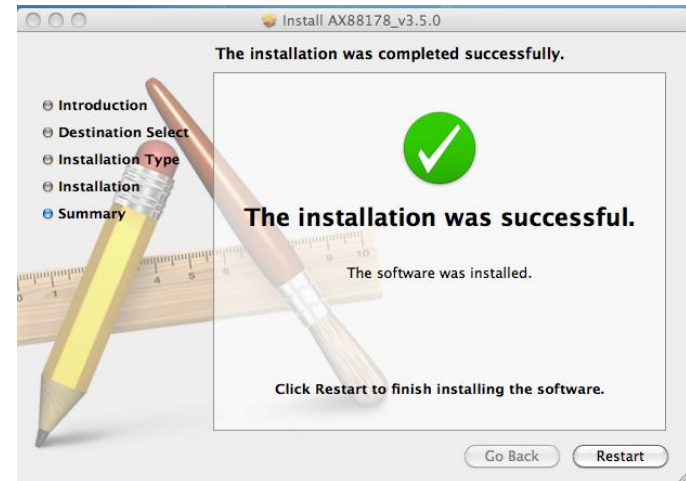
- Click **Install**.



- Click **Continue installation**.



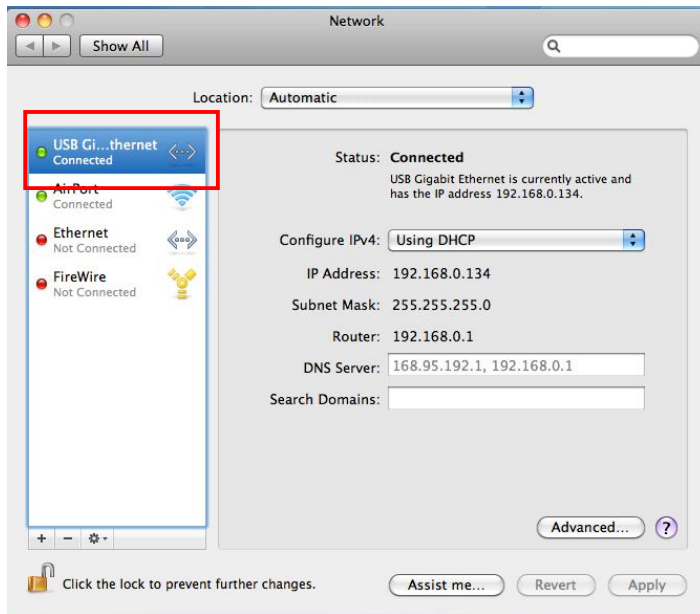
- Click "Restart", the computer will be restarted once installation is completed.



- Start **System Preferences** and select **Network**, you'll see the screen as below prompted and please select **OK**.



10. You will find that a new Ethernet network interface is available.



The Link LED should light up green to indicate a proper physical connection between the Ethernet adapter and the network. If the Link LED doesn't light up, please verify the cable connections between all the network devices.

## Mac 10.5

1. Insert the provided driver CD into your CD-ROM drive. Double-click the CD and navigate to the directory of `\Driver\Mac_OSX10.4-10.6`



2. Double-click **AX88178.dmg** to mount the driver installer image .

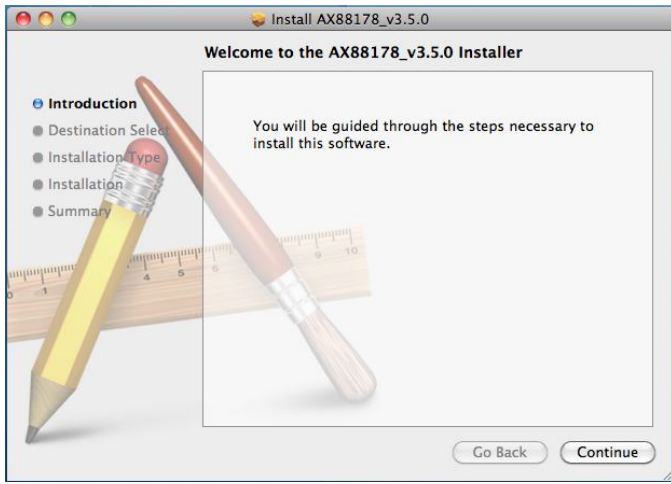


3. Double-click **AX88178\_v3.5.0** to execute the installer program.

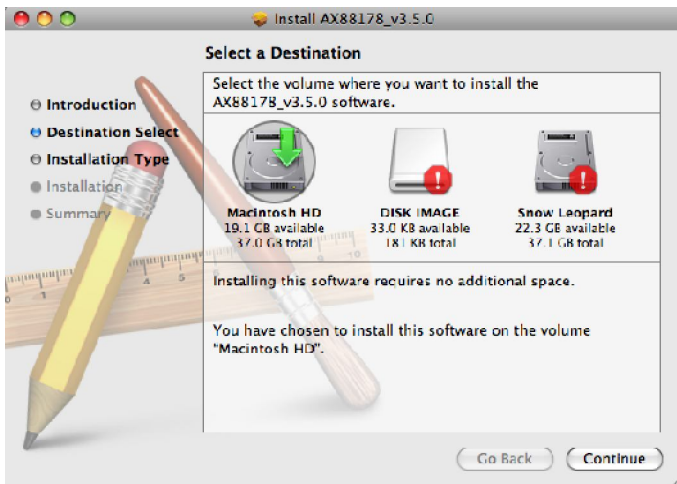




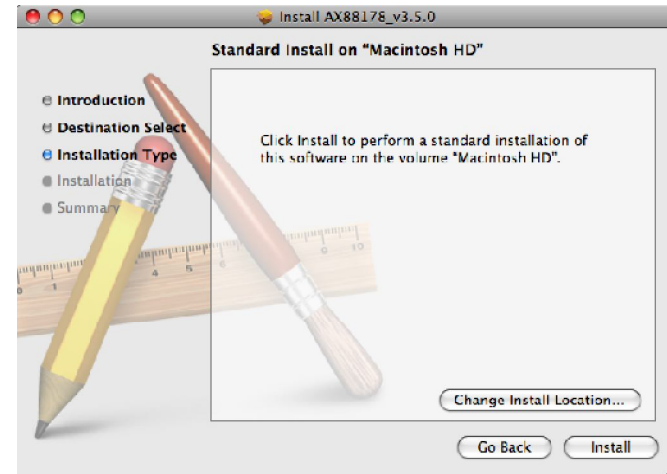
- Please click **Continue** to install this software.



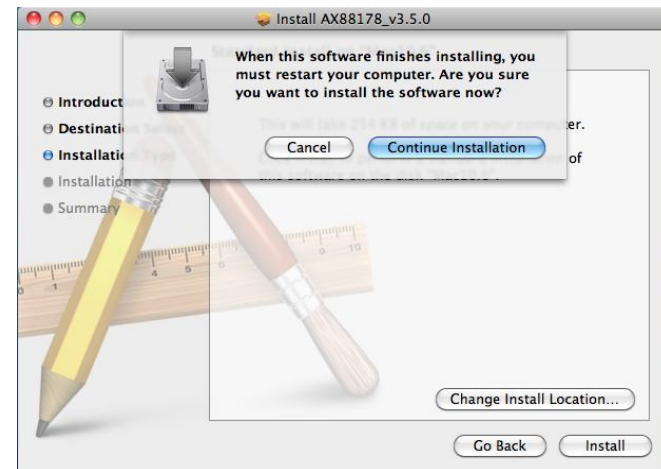
- Select a Destination volume to install the driver and click **Continue**.



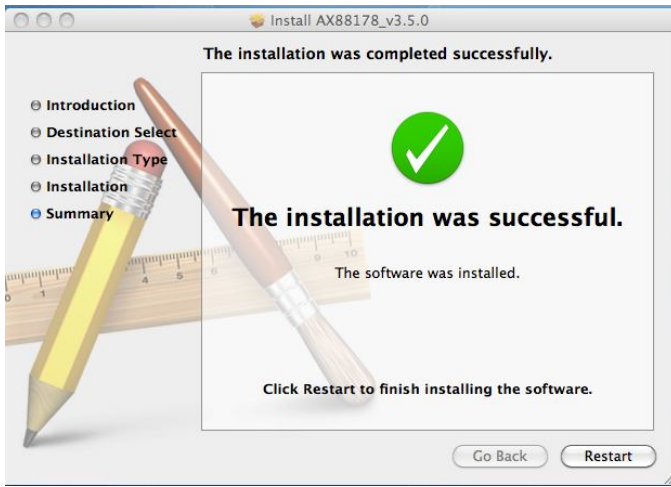
- Click **Install** to perform a basic installation of software package.



- Click "**Continue installation**" to install.



- Click "Restart", the computer will be restarted once installation is completed.



- Connect the Ethernet adapter to a free USB port.
- Start **System Preferences** and select **Network**, you'll see the screen as below prompted and please select **OK**.



## Mac 10.4

- Insert the provided driver CD into your CD-ROM drive. Double-click the CD and navigate to the directory of `\Driver\Mac_OSX10.4-10.6`



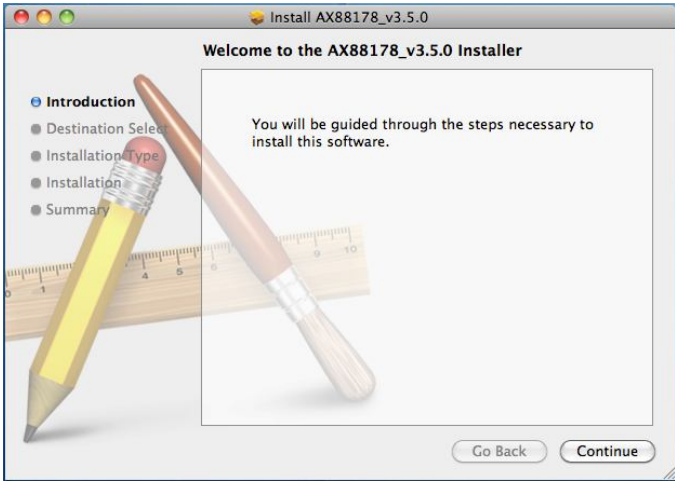
- Double-click **AX88178.dmg** to mount the driver installer image



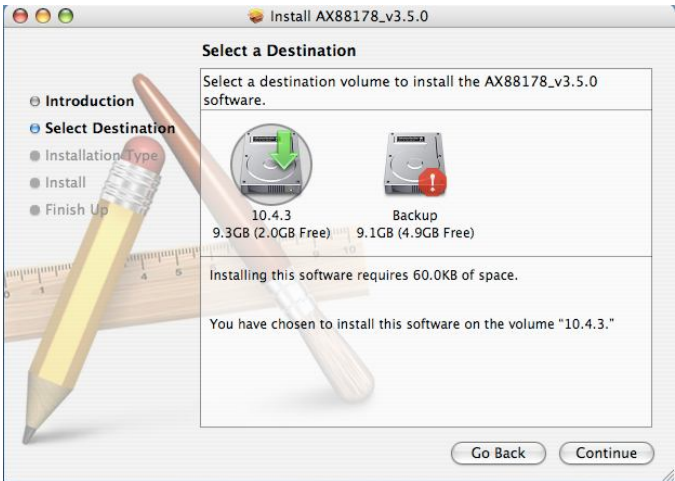
- Double-click **AX88178\_v3.5.0** to execute the installer program.



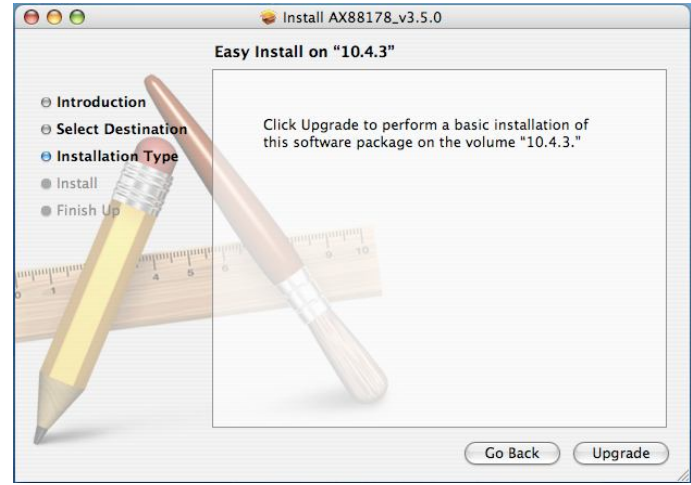
4. Please click **Continue** to install this software.



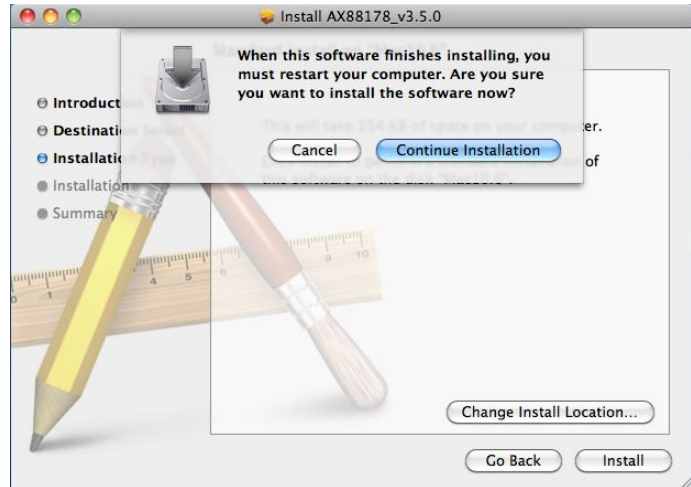
5. Select a Destination volume to install the driver and click **Continue**.



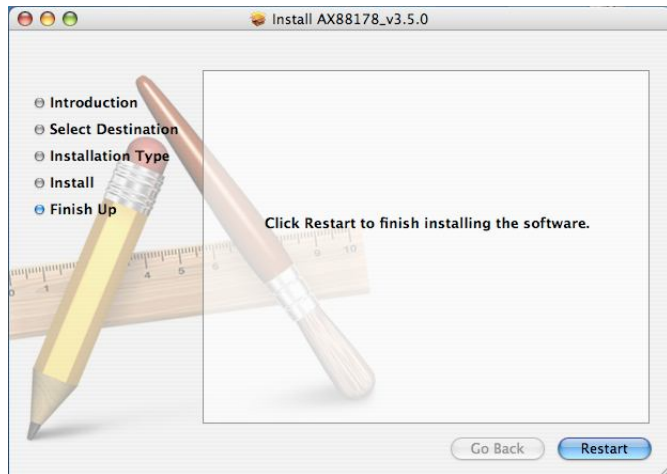
6. Click **Install** to perform a basic installation of software package.



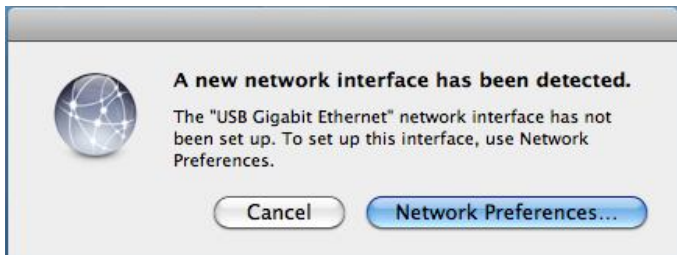
7. Click "**Continue installation**" to install.



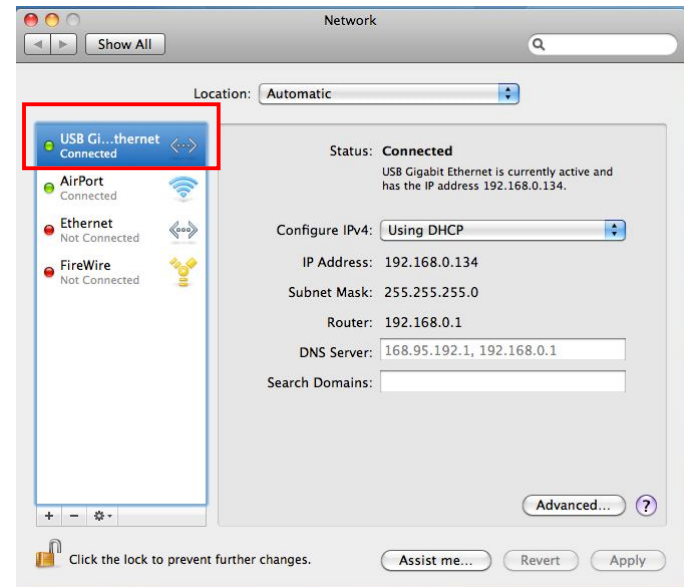
8. Click "Restart", the computer will be restarted once installation is completed.



9. Connect the Ethernet adapter to a free USB port.
10. Start **System Preferences** and select **Network**, you'll see the screen as below prompted and please select **OK**.

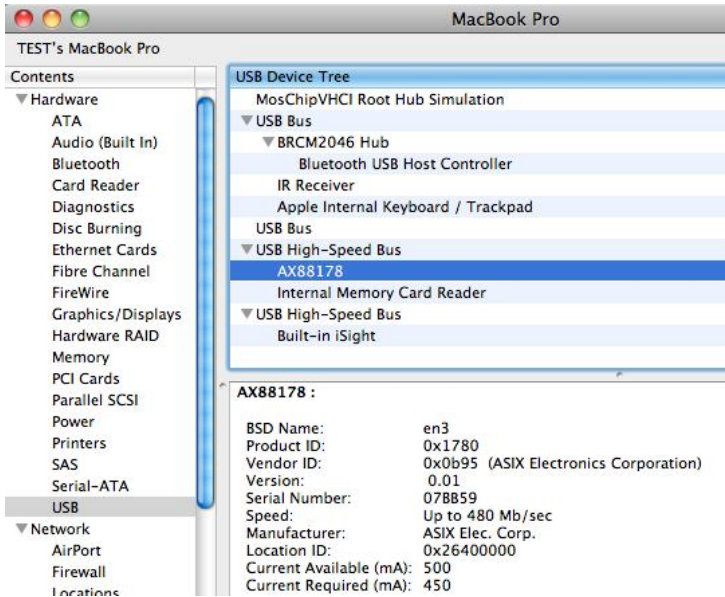


11. You will find that a new Ethernet network interface is available.



## Verifying the Driver Installation on Mac

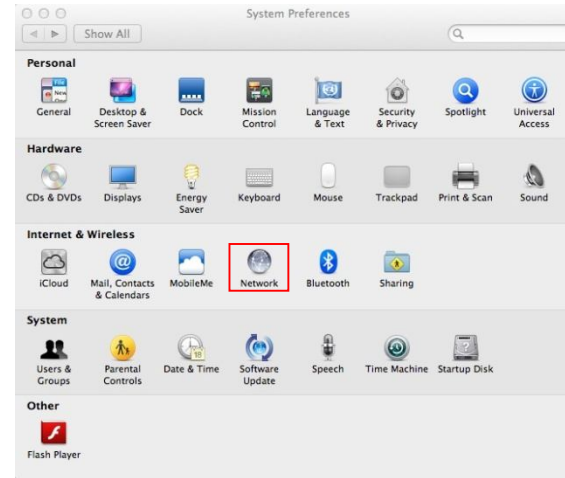
Once you finish the installation, you can open **GO > Utilities > System Information > Hardware > USB >** to verify if your Ethernet adapter is properly installed.



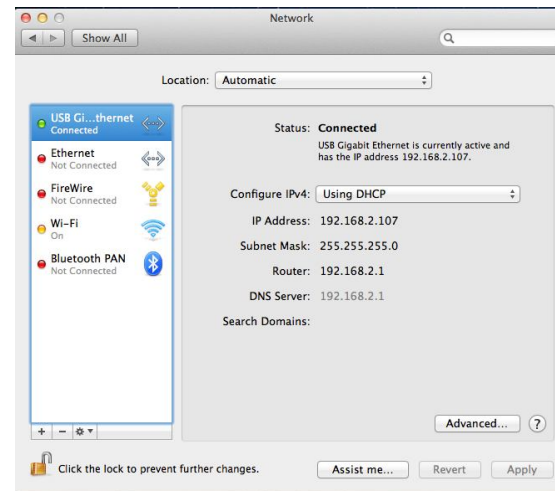
## TCP/IP Setting in Mac

### Mac OS 10.7

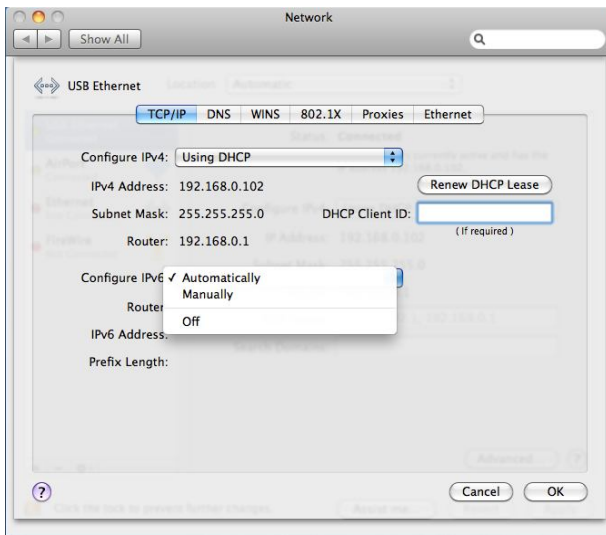
1. Choose Apple > System Preferences, and then click Network.



2. Select **USB Ethernet** service, then click **Advanced** to setup IP address.



- Under TCP/IP tag, on the Configure IPv4 or IPv6 drop down menu, select Automatically or Manually (by default, the configuration is set to Automatically)



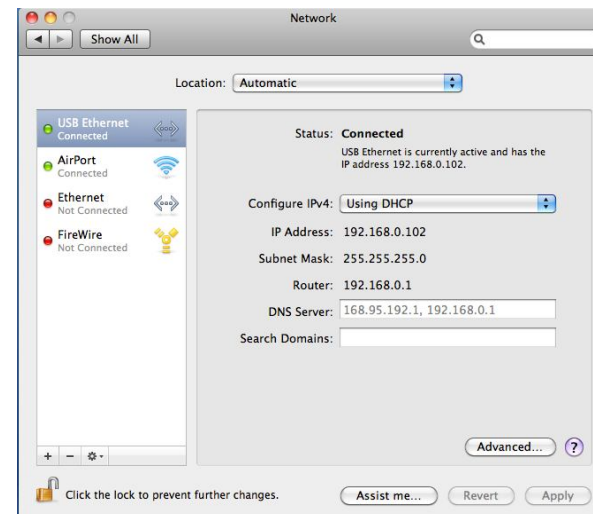
- If manually setting is selected, enter the IPv4 or IPv6 address, router address, and prefix length you received from your network administrator or Internet service provider. Your router's address may be referred to as your gateway address by some ISPs.

## Mac OS 10.6

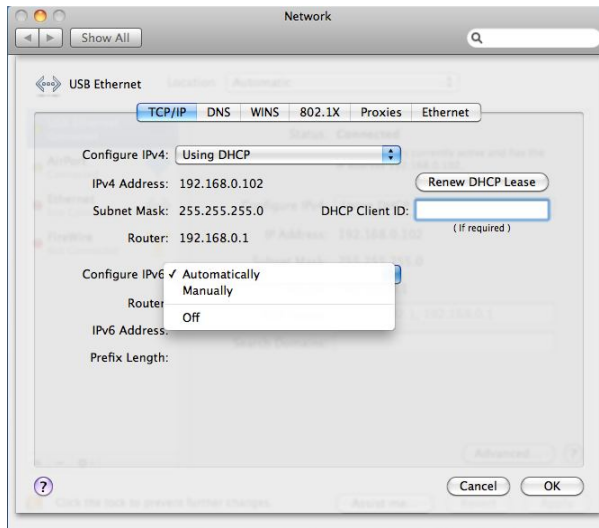
- Choose Apple menu > **System Preferences**, and then click **Network**. If the Network Preference is locked, click on the lock icon and enter your Admin password to make further changes.



- Select **USB Ethernet**, and then click **Advanced** to setup IP address.



- Under TCP/IP tag, click on the Configure IPv4 or IPv6 pop-up menu, select Automatically or Manually (by default, the configuration is set to Automatically)



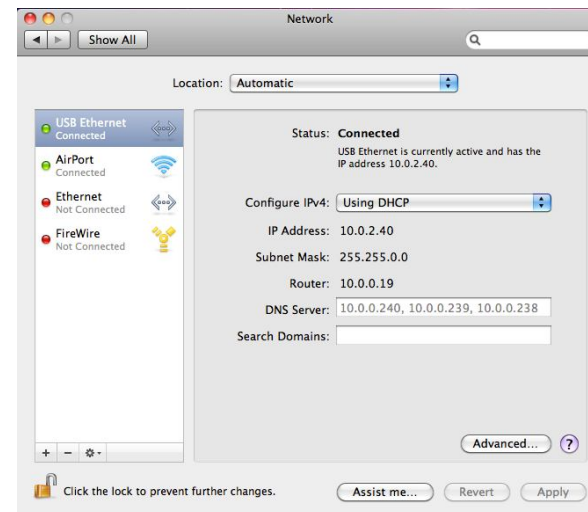
- If manually setting is selected, enter the IPv4 or IPv6 address, router address, and prefix length you received from your network administrator or Internet service provider. Your router's address may be referred to as your gateway address by some ISPs.

## Mac OS 10.5

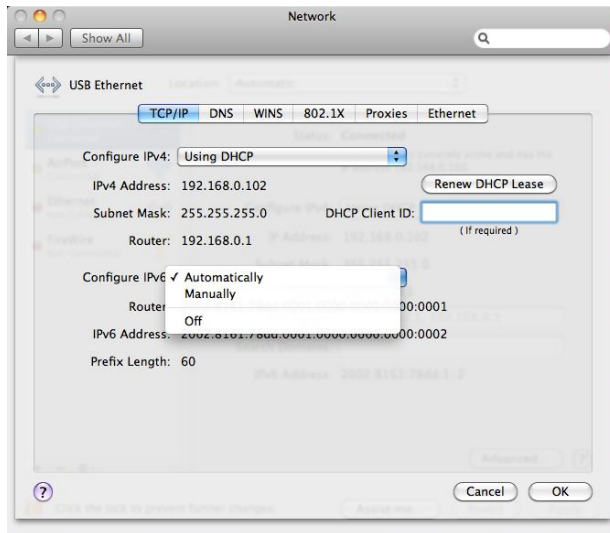
- Choose **Apple > System Preferences**, and then click **Network**.



- Choose the network service you want to use with IPv4 or IPv6, such as **USB Ethernet**. Then, click **Advanced**.



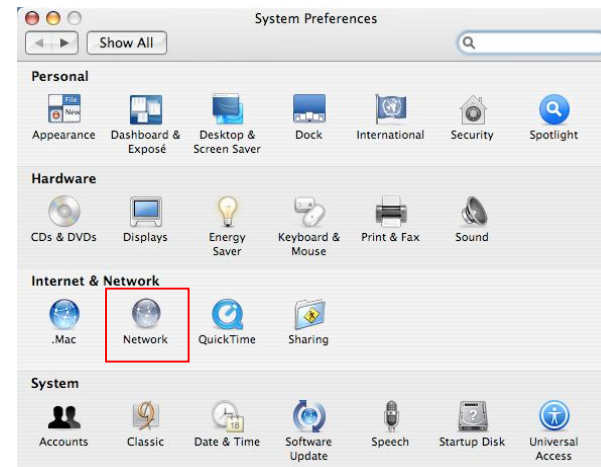
- Under **TCP/IP** tag, select Automatically or Manually on configure IPv4 or IPv6. (by default, the configuration is set to Automatically)



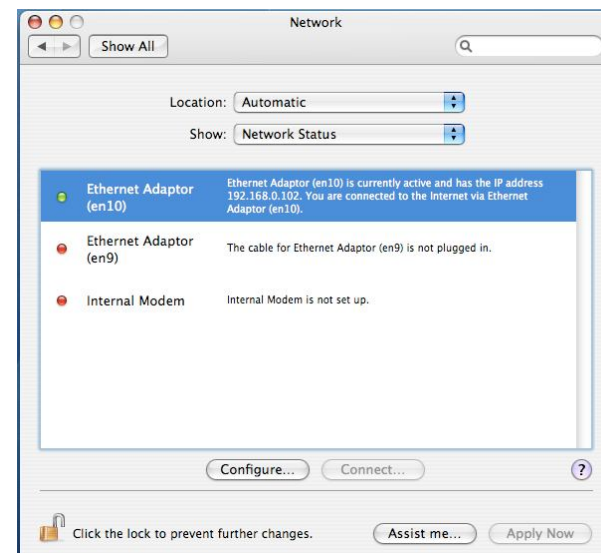
- If manually setting is selected, enter the IPv4 or IPv6 address, router address, and prefix length you received from your network administrator or Internet service provider. Your router address may be referred to as your gateway address by some ISPs.

## Mac OS 10.4

- Open System Preferences and click Network.

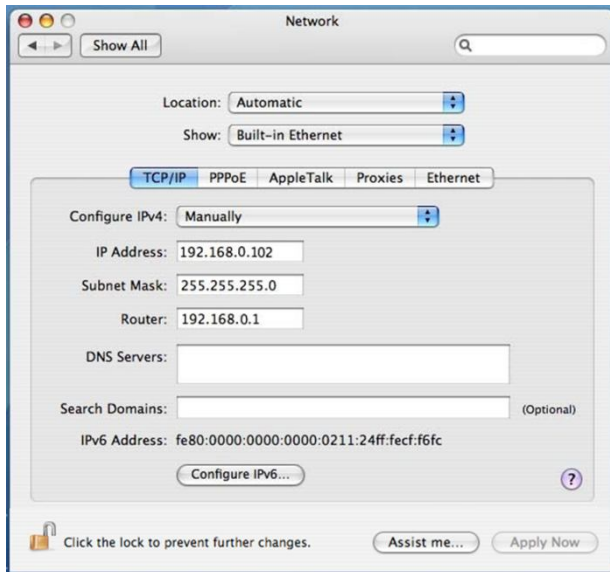


- Choose Network adapter then click **Configure**





- Under TCP/IP tag, on **Configure IPv4** drop down menu, select **Using DHCP** or **Manually** option. If manually setup is selected, enter the IP address, subnet Mask and Router IP address. Your router address may be referred to as your gateway address by some ISPs.



- If manually setup selected on IPv6, enter the IPv6 address, router address, and prefix length you received from your network administrator or Internet service provider. Your router address may be referred to as your gateway address by some ISPs.

## Technical Specifications

Hardware	
<b>Standards</b>	USB 2.0, 1.1 IEEE 802.3: 10Base-T IEEE 802.3u: 100Base-TX IEEE 802.3ab: 1000Base-T
<b>Data Transfer Rate</b>	Ethernet: 10Mbps/20Mbps (half/full-duplex) Fast Ethernet: 100Mbps/200Mbps (half/full duplex) Gigabit: 2000Mbps (full-duplex)
<b>Embedded Buffers</b>	20KB SRAM for RX packets buffering 20KB SRAM for TX packaging buffering
<b>Supported OS</b>	Windows 7(32/64-bit) / Vista(32/64-bit) / XP(32/64-bit) Mac OS X 10.4 ~ 10.7
<b>LEDs</b>	1000Mbps, Link
<b>Power</b>	Bus-Powered
<b>Power Consumption</b>	131mA
<b>Power Management</b>	Suspend mode Wake on LAN
<b>Temperature</b>	Operating: 0° C~ 40° C (32° F~ 104° F) Storage: -10° C~ 55° C (14° F~ 131° F)
<b>Humidity</b>	Max. 85% (non-condensing)
<b>Certifications</b>	CE, FCC

## Limited Warranty

TRENDnet warrants its products against defects in material and workmanship, under normal use and service, for the following lengths of time from the date of purchase.

### TU2-ETG– 3 Years Limited Warranty

AC/DC Power Adapter, Cooling Fan, and Power Supply carry 1 year warranty.

If a product does not operate as warranted during the applicable warranty period, TRENDnet shall reserve the right, at its expense, to repair or replace the defective product or part and deliver an equivalent product or part to the customer. The repair/replacement unit's warranty continues from the original date of purchase. All products that are replaced become the property of TRENDnet. Replacement products may be new or reconditioned. TRENDnet does not issue refunds or credit. Please contact the point-of-purchase for their return policies.

TRENDnet shall not be responsible for any software, firmware, information, or memory data of customer contained in, stored on, or integrated with any products returned to TRENDnet pursuant to any warranty.

There are no user serviceable parts inside the product. Do not remove or attempt to service the product by any unauthorized service center. This warranty is voided if (i) the product has been modified or repaired by any unauthorized service center, (ii) the product was subject to accident, abuse, or improper use (iii) the product was subject to conditions more severe than those specified in the manual.

Warranty service may be obtained by contacting TRENDnet within the applicable warranty period and providing a copy of the dated proof of the purchase. Upon proper submission of required documentation a Return Material Authorization (RMA) number will be issued. An RMA number is required in order to initiate warranty service support for all TRENDnet products. Products that are sent to TRENDnet for RMA service must have the RMA number marked on the outside of return packages and sent to TRENDnet prepaid, insured and packaged appropriately for safe shipment. Customers shipping from outside of the USA and Canada are responsible for return shipping fees. Customers shipping from outside of the USA are responsible for custom charges, including but not limited to, duty, tax, and other fees.

**WARRANTIES EXCLUSIVE:** IF THE TRENDNET PRODUCT DOES NOT OPERATE AS WARRANTED ABOVE, THE CUSTOMER'S SOLE REMEDY SHALL BE, AT TRENDNET'S OPTION, REPAIR OR REPLACE. THE FOREGOING WARRANTIES AND REMEDIES ARE EXCLUSIVE AND ARE IN LIEU OF ALL OTHER WARRANTIES, EXPRESSED OR IMPLIED, EITHER IN FACT OR BY OPERATION OF LAW, STATUTORY OR OTHERWISE, INCLUDING WARRANTIES OF MERCHANTABILITY AND FITNESS FOR A PARTICULAR PURPOSE. TRENDNET NEITHER ASSUMES NOR AUTHORIZES ANY OTHER PERSON TO ASSUME FOR IT ANY OTHER LIABILITY IN CONNECTION WITH THE SALE, INSTALLATION MAINTENANCE OR USE OF TRENDNET'S PRODUCTS.

TRENDNET SHALL NOT BE LIABLE UNDER THIS WARRANTY IF ITS TESTING AND EXAMINATION DISCLOSE THAT THE ALLEGED DEFECT IN THE PRODUCT DOES NOT EXIST OR WAS CAUSED BY CUSTOMER'S OR ANY THIRD PERSON'S MISUSE, NEGLIGENCE, IMPROPER INSTALLATION OR TESTING, UNAUTHORIZED ATTEMPTS TO REPAIR OR MODIFY, OR ANY OTHER CAUSE BEYOND THE RANGE OF THE INTENDED USE, OR BY ACCIDENT, FIRE, LIGHTNING, OR OTHER HAZARD.

**LIMITATION OF LIABILITY:** TO THE FULL EXTENT ALLOWED BY LAW TRENDNET ALSO EXCLUDES FOR ITSELF AND ITS SUPPLIERS ANY LIABILITY, WHETHER BASED IN CONTRACT OR TORT (INCLUDING NEGLIGENCE), FOR INCIDENTAL, CONSEQUENTIAL, INDIRECT, SPECIAL, OR PUNITIVE DAMAGES OF ANY KIND, OR FOR LOSS OF REVENUE OR PROFITS, LOSS OF BUSINESS, LOSS OF INFORMATION OR DATE, OR OTHER FINANCIAL LOSS ARISING OUT OF OR IN CONNECTION WITH THE SALE, INSTALLATION, MAINTENANCE, USE, PERFORMANCE, FAILURE, OR INTERRUPTION OF THE POSSIBILITY OF SUCH DAMAGES, AND LIMITS ITS LIABILITY TO REPAIR, REPLACEMENT, OR REFUND OF THE PURCHASE PRICE PAID, AT TRENDNET'S OPTION. THIS DISCLAIMER OF LIABILITY FOR DAMAGES WILL NOT BE AFFECTED IF ANY REMEDY PROVIDED HEREIN SHALL FAIL OF ITS ESSENTIAL PURPOSE.

**Governing Law:** This Limited Warranty shall be governed by the laws of the state of California.

Some TRENDnet products include software code written by third party developers. These codes are subject to the GNU General Public License ("GPL") or GNU Lesser General Public License ("LGPL").

Go to <http://www.trendnet.com/gpl> or <http://www.trendnet.com> Download section and look for the desired TRENDnet product to access to the GPL Code or LGPL Code.

These codes are distributed WITHOUT WARRANTY and are subject to the copyrights of the developers. TRENDnet does not provide technical support for these codes.

Please go to <http://www.gnu.org/licenses/gpl.txt> or <http://www.gnu.org/licenses/lgpl.txt> for specific terms of each license.

P05202009v2

2011/11/02



## Product Warranty Registration

Please take a moment to register your product online.  
Go to TRENDnet's website at <http://www.trendnet.com/register>

TRENDnet  
20675 Manhattan Place  
Torrance, CA 90501. USA