



Руководство по быстрой установк 

**TU2-ETG**  
V1

# Table of Contents

Русский	1
1. Подготовка к монтажу	1
2. Порядок установки	2
.....	
Troubleshooting	4



## Содержимое упаковки

- TU2-ETG
- Руководство по быстрой установке на нескольких языках
- CD-ROM -диск с драйвером

## Системные требования

- Дисконд CD-ROM
- Компьютер с портом USB 2.0 или 1.1

Поддерживаемые OS	ЦП	Память
Windows 7 (32/64-bit)	1ГГц или выше	1ГБ RAM или более
Windows Vista (32/64-bit)	800МГц или выше	512МБ RAM или более
Windows XP (32/64-bit) / 2000	300МГц или выше	256МБ RAM или более

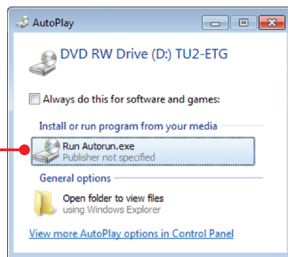
## 2. Порядок установки

### Примечание:

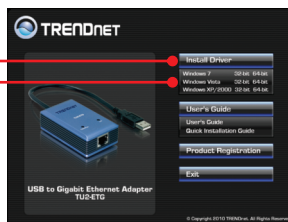
Не устанавливайте TU2-ETG адаптер, не получив на то указаний.

1. Установите в дисковод CD-ROM компакт-диск с драйверами.

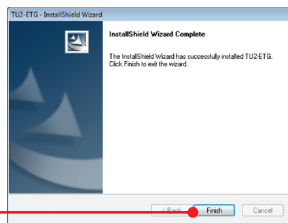
2. Нажмите **Run Autorun.exe** (только для Windows 7/Vista).



3. Нажмите «Установить драйвер» (**Install Driver**) и затем выберите Вашу операционную систему.



4. Следуйте указаниям из InstallShield и щелкните по кнопке **Завершение**.



ENGLISH

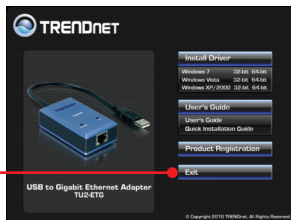
FRANÇAIS

DEUTSCH

ESPAÑOL

РУССКИЙ

5. Щелкните по кнопке **Exit**.



6. Извлеките CD-ROM-диск со драйвером из привода.

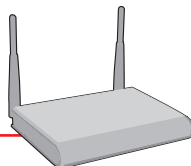
7. Присоедините адаптер к USB-порту компьютера.



8. Драйверы установятся автоматически.



9. Присоедините кабель RJ-45 от адаптера к коммутатору, маршрутизатору или кабельному/DSL-модему.



**Установка завершена.**

## **1. I inserted the Driver CD-ROM into my computer's CD-ROM Drive and the installation menu does not appear automatically. What should I do?**

1. For Windows 7, if the installation menu does not appear automatically, click on the Windows icon on the bottom left hand corner of the screen, click the "Search programs and files" box, and type **D:\autorun.exe**, where "D" in "D:\autorun.exe" is the letter assigned to your CD-ROM Drive, and then press the ENTER key on your keyboard.
2. For Windows Vista, if the installation menu does not appear automatically, click **Start**, click the **Start Search** box, and type **D:\autorun.exe** where "D" in "D:\autorun.exe" is the letter assigned to your CD-ROM Drive, and then press the ENTER key on your keyboard.
3. For Windows XP/2000, if the installation menu does not appear automatically, click **Start**, click **Run**, and type **D:\autorun.exe** where "D" in "D:\autorun.exe" is the letter assigned to your CD-ROM Drive, and then press the ENTER key on your keyboard.

## **2. Can I connect or disconnect the TU2-ETG while the computer is on?**

Yes, you can connect or disconnect TU2-ETG while the computer is on because the USB interface is Plug-and-Play compliant and hot-pluggable.

## **3. Windows is unable to recognize my hardware. What should I do?**

1. Make sure your computer meets the minimum requirements as specified in Section 1 of this Quick Installation Guide.
2. Try plugging the adapter into a different USB port.

## **4. Windows recognizes my new hardware, but I'm unable to connect to my network. What should I do?**

1. Verify that the RJ-45 Ethernet cable is securely connected from your switch or router to your adapter.
2. Verify that the LEDs on your adapter are lit.
3. Verify that the TCP/IP settings are set to Obtain an IP address automatically.

## **5. When I connect my adapter to a Gigabit switch, I am not getting Gigabit speeds. What should I do?**

Make sure you are using CAT-5e or CAT-6 Ethernet Cables. Some CAT-5 cables are not rated to run in Gigabit.

If you still encounter problems or have any questions regarding the **TU2-ETG**, please contact TRENDnet's Technical Support Department.

## Certifications

This equipment has been tested and found to comply with FCC and CE Rules.

Operation is subject to the following two conditions:

- (1) This device may not cause harmful interference.
- (2) This device must accept any interference received. Including interference that may cause undesired operation.



Waste electrical and electronic products must not be disposed of with household waste. Please recycle where facilities exist. Check with you Local Authority or Retailer for recycling advice.



**NOTE:** THE MANUFACTURER IS NOT RESPONSIBLE FOR ANY RADIO OR TV INTERFERENCE CAUSED BY UNAUTHORIZED MODIFICATIONS TO THIS EQUIPMENT. SUCH MODIFICATIONS COULD VOID THE USER'S AUTHORITY TO OPERATE THE EQUIPMENT.

### ADVERTENCIA

En todos nuestros equipos se mencionan claramente las características del adaptador de alimentación necesario para su funcionamiento. El uso de un adaptador distinto al mencionado puede producir daños físicos y/o daños al equipo conectado. El adaptador de alimentación debe operar con voltaje y frecuencia de la energía eléctrica domiciliar existente en el país o zona de instalación.



**TRENDnet<sup>®</sup>**

## Product Warranty Registration

Please take a moment to register your product online.  
Go to TRENDnet's website at <http://www.trendnet.com/register>