



Guide d'installation rapide 

TU2-ETG
V1

Table of Contents

Français	1
1. Avant de commencer	1
2. Procéder à l'installation	2
.....	
Troubleshooting	4



Contenu de l'emballage

- ← TU2-ETG
- ← Pilote sur CD-ROM
- ← Guide d'installation rapide en plusieurs langues

Vérification de l'équipement

- ← Lecteur de CD-ROM
- ← Port USB: 2.0 ou 1.1

SE supportés	CPU	Mémoire
Windows 7 (32/64-bit)	1GHz ou supérieur	1GB RAM ou supérieur
Windows Vista (32/64-bit)	800MHz ou supérieur	512MB RAM ou supérieur
Windows XP (32/64-bit) / 2000	300MHz ou supérieur	256MB RAM ou supérieur

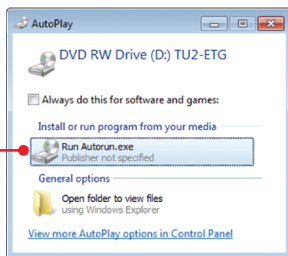
2. Procéder à l'installation

Remarque:

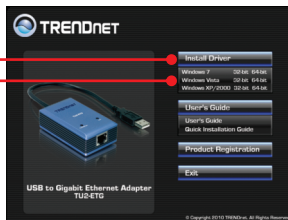
N'installez pas l'adaptateur USB TU2-ETG avant d'en recevoir la consigne.

1. Insérez le CD-ROM avec le pilote dans votre lecteur de CD-ROM.

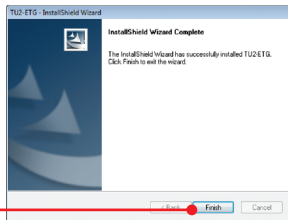
2. Cliquez sur **Run Autorun.exe** (Windows 7/Vista uniquement).



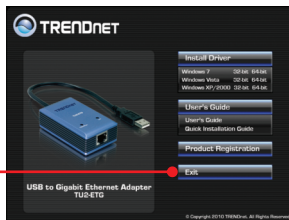
3. Cliquez sur **Installer le driver**, puis sélectionnez votre système d'exploitation.



4. Suivez les instructions de l'écran de l'assistant d'installation et cliquez ensuite sur **Terminer**.



5. Cliquez sur **Quitter**.



6. Enlevez le CD-ROM de votre lecteur de CD-ROM de votre ordinateur.

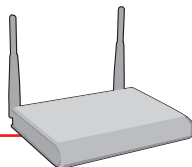
7. Branchez l'adaptateur à un port USB disponible de votre ordinateur.



8. Les pilotes s'installeront automatiquement.



9. Branchez un câble RJ-45 depuis le switch, le routeur ou le modem câble/DSL.



L'installation est maintenant complète.

1. I inserted the Driver CD-ROM into my computer's CD-ROM Drive and the installation menu does not appear automatically. What should I do?

1. For Windows 7, if the installation menu does not appear automatically, click on the Windows icon on the bottom left hand corner of the screen, click the "Search programs and files" box, and type **D:\autorun.exe**, where "D" in "D:\autorun.exe" is the letter assigned to your CD-ROM Drive, and then press the ENTER key on your keyboard.
2. For Windows Vista, if the installation menu does not appear automatically, click **Start**, click the **Start Search** box, and type **D:\autorun.exe** where "D" in "D:\autorun.exe" is the letter assigned to your CD-ROM Drive, and then press the ENTER key on your keyboard.
3. For Windows XP/2000, if the installation menu does not appear automatically, click **Start**, click **Run**, and type **D:\autorun.exe** where "D" in "D:\autorun.exe" is the letter assigned to your CD-ROM Drive, and then press the ENTER key on your keyboard.

2. Can I connect or disconnect the TU2-ETG while the computer is on?

Yes, you can connect or disconnect TU2-ETG while the computer is on because the USB interface is Plug-and-Play compliant and hot-pluggable.

3. Windows is unable to recognize my hardware. What should I do?

1. Make sure your computer meets the minimum requirements as specified in Section 1 of this Quick Installation Guide.
2. Try plugging the adapter into a different USB port.

4. Windows recognizes my new hardware, but I'm unable to connect to my network. What should I do?

1. Verify that the RJ-45 Ethernet cable is securely connected from your switch or router to your adapter.
2. Verify that the LEDs on your adapter are lit.
3. Verify that the TCP/IP settings are set to Obtain an IP address automatically.

5. When I connect my adapter to a Gigabit switch, I am not getting Gigabit speeds. What should I do?

Make sure you are using CAT-5e or CAT-6 Ethernet Cables. Some CAT-5 cables are not rated to run in Gigabit.

If you still encounter problems or have any questions regarding the **TU2-ETG**, please contact TRENDnet's Technical Support Department.

Certifications

This equipment has been tested and found to comply with FCC and CE Rules.

Operation is subject to the following two conditions:

- (1) This device may not cause harmful interference.
- (2) This device must accept any interference received. Including interference that may cause undesired operation.



Waste electrical and electronic products must not be disposed of with household waste. Please recycle where facilities exist. Check with you Local Authority or Retailer for recycling advice.



NOTE: THE MANUFACTURER IS NOT RESPONSIBLE FOR ANY RADIO OR TV INTERFERENCE CAUSED BY UNAUTHORIZED MODIFICATIONS TO THIS EQUIPMENT. SUCH MODIFICATIONS COULD VOID THE USER'S AUTHORITY TO OPERATE THE EQUIPMENT.

ADVERTENCIA

En todos nuestros equipos se mencionan claramente las características del adaptador de alimentación necesario para su funcionamiento. El uso de un adaptador distinto al mencionado puede producir daños físicos y/o daños al equipo conectado. El adaptador de alimentación debe operar con voltaje y frecuencia de la energía eléctrica domiciliar existente en el país o zona de instalación.



TRENDnet[®]

Product Warranty Registration

Please take a moment to register your product online.
Go to TRENDnet's website at <http://www.trendnet.com/register>