



Quick Installation Guide



TU2-ET100

Table of Contents

Русский	1
1. Что нужно сделать в самом начале	1
2. Порядок установки	2
Troubleshooting	6

1. Что нужно сделать в самом начале



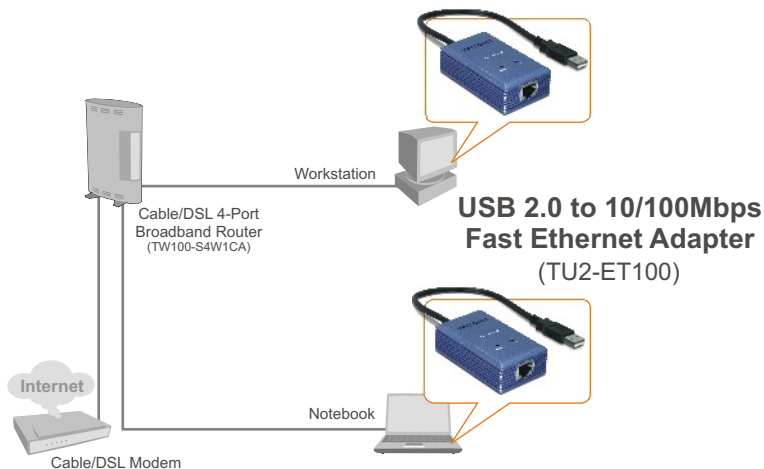
Содержимое упаковки

- TU2-ET100
- Руководство по быстрой установке
- CD-ROM-диск с драйвером

Системные требования

- Дискковод CD-ROM
- ЦП: Intel Pentium 300 МГц или выше
- Память: 256 МБ или более
- Компьютер с портом USB 1.1 или 2.0
- Windows XP/2000/ME/98SE, Mac OS X

Применение



2. Порядок установки

1. Установите в дисковод CD-ROM компакт-диск с драйверами.

2. Присоедините адаптер к USB-порту компьютера. Появится Мастер установки нового оборудования.

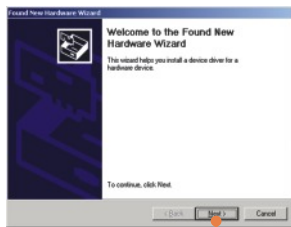


Windows XP



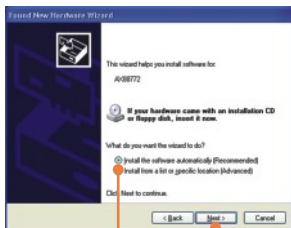
3. Выберите **Нет** и щелкните по кнопке **Далее**.

Windows 2000



3. Щелкните по кнопке **Далее (Next)**.

Windows XP

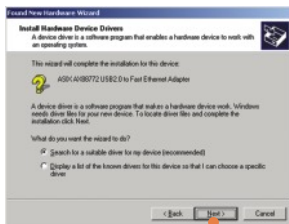


4. Выберите **Установить программное обеспечение автоматически (Install the software automatically)** и щелкните по кнопке **Далее (Next)**.

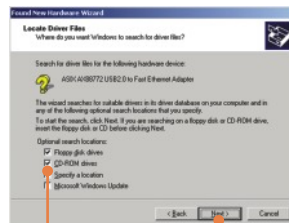


5. Щелкните по кнопке **Все равно продолжить (Continue Anyway)**.

Windows 2000



4. Выберите **Поиск подходящего драйвера для моего устройства (рекомендуется)** и щелкните по кнопке **Далее**.



5. Выберите **CD-ROM drive** и щелкните по кнопке **Далее**.

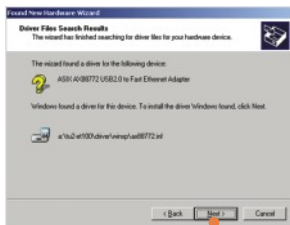
Windows XP



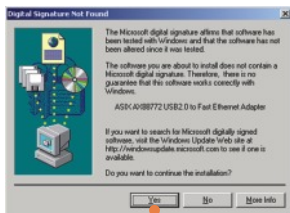
6. Щелкните по кнопке
Заквершить (Finish).

7. Перейдите к шагу 9

Windows 2000



6. Щелкните по кнопке
Далее (Next).

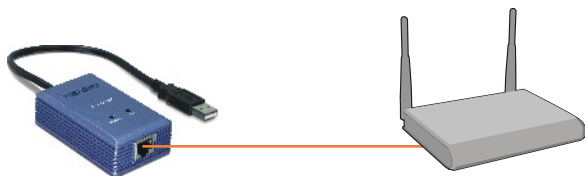


7. Щелкните по кнопке
Да (Yes).



8. Щелкните по кнопке
Заквершить (Finish).

9. Присоедините кабель RJ-45 от адаптера к коммутатору, маршрутизатору или кабельному /DSL-модему.



Установка завершена.

Q1: Can I connect or disconnect TU2-ET100 while the computer is on?

A1: Yes, you can connect or disconnect TU2-ET100 while the computer is on because the USB interface is Plug-and-Play compliant and hot-pluggable.

Q2: Windows is unable to recognize my hardware. What should I do?

A2: First, make sure your computer meets the minimum requirements as specified in Section 1 of this Quick Installation Guide. Second, try plugging the adapter into a different USB port.

Q3: Windows recognizes my new hardware, but I'm unable to connect to my network. What should I do?

A3: First, verify that the network cable is securely connected from your switch or router to your adapter. Second, verify that the LEDs on your adapter are lit. Third, verify that the TCP/IP settings are set to **Obtain an IP address automatically**.

Q4: How do I install this device on Windows 98SE and ME?

A4: Refer to the User Guide included on the Driver CD-ROM for installation instructions.

If you still encounter problems or have any questions regarding the **TU2-ET100**, please refer to the User's Guide included on the Driver CD-ROM or contact TRENDnet's Technical Support Department.

Certifications

This equipment has been tested and found to comply with FCC and CE Rules.

Operation is subject to the following two conditions:

- (1) This device may not cause harmful interference.
- (2) This device must accept any interference received. Including interference that may cause undesired operation.



Waste electrical and electronic products must not be disposed of with household waste. Please recycle where facilities exist. Check with you Local Authority or Retailer for recycling advice.



NOTE: THE MANUFACTURER IS NOT RESPONSIBLE FOR ANY RADIO OR TV INTERFERENCE CAUSED BY UNAUTHORIZED MODIFICATIONS TO THIS EQUIPMENT. SUCH MODIFICATIONS COULD VOID THE USER'S AUTHORITY TO OPERATE THE EQUIPMENT.



TRENDnet[®]



TRENDnet Technical Support

US • Canada

Toll Free Telephone: 1(866) 845-3673

24/7 Tech Support

Europe (Germany • France • Italy • Spain • Switzerland • UK)

Toll Free Telephone: +00800 60 76 76 67

English/Espanol - 24/7

Francais/Deutsch - 11am-8pm, Monday - Friday MET

Worldwide

Telephone: +(31) (0) 20 504 05 35

English/Espanol - 24/7

Francais/Deutsch - 11am-8pm, Monday - Friday MET

Product Warranty Registration

Please take a moment to register your product online.

Go to TRENDnet's website at <http://www.trendnet.com>

TRENDnet

3135 Kashiwa Street
Torrance, CA 90505
USA