



Quick Installation Guide



TU2-ET100

Table of Contents

Français	1
1. Avant de commencer	1
2. Procéder à l'installation	2
Troubleshooting	6

1. Avant de commencer



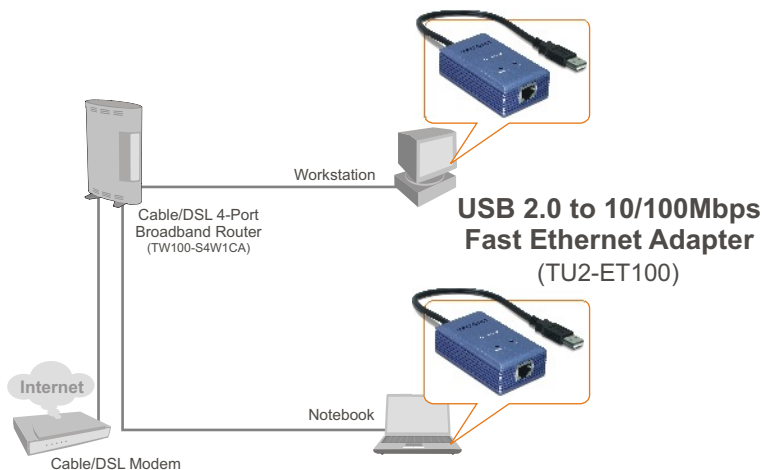
Contenu de l'emballage

- TU2-ET100
- Pilote sur CD-ROM
- Guide d'installation rapide

Configuration du système

- Lecteur de CD-ROM
- Microprocesseur : Intel Pentium 300 MHz ou supérieur
- Mémoire: 256 MB ou supérieur
- Un ordinateur avec une port USB 1.1 ou 2.0 disponible
- Windows XP/2000/ME/98SE, Mac OS X

Application



2. Procéder à l'installation

1. Insérez le CD-ROM avec le pilote dans votre lecteur de CD-ROM.

2. Branchez l'adaptateur à un port USB disponible de votre ordinateur. L'assistant "**Nouveau matériel détecté**" apparaîtra.



Windows XP



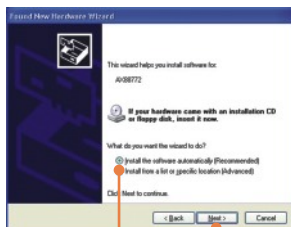
3. L'assistant nouveau matériel détecté apparaîtra, sélectionnez **Non** et cliquez ensuite sur **Suivant**.

Windows 2000



3. Cliquez sur **Next** (Suivant).

Windows XP

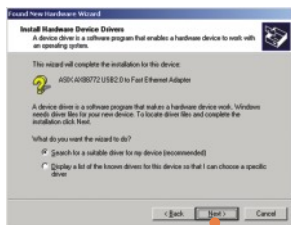


4. Sélectionnez **Installer le logiciel automatiquement** (Installer le logiciel automatiquement) et cliquez sur **Next** (Suivant).

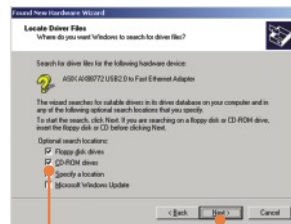


5. Cliquez sur **Continue Anyway** (Continuer malgré tout).

Windows 2000



4. Cliquez sur **Rechercher le meilleur pilote adapté à mon périphérique (Recommandé)** et ensuite sur **Next** (Suivant).



5. Cliquez sur **Lecteur de CD-ROM** et ensuite sur **Next** (Suivant).

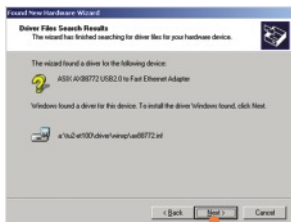
Windows XP



6. Cliquez sur **Finish** (Terminer).

7. Poursuivez par l'étape 9.

Windows 2000



6. Cliquez sur **Next** (Suivant).



7. Cliquez sur **Yes** (Oui).



8. Cliquez sur **Finish** (Terminer).

9. Branchez un câble RJ-45 depuis le switch, le routeur ou le modem câble/DSL.



L'installation est maintenant complète.

Q1: Can I connect or disconnect TU2-ET100 while the computer is on?

A1: Yes, you can connect or disconnect TU2-ET100 while the computer is on because the USB interface is Plug-and-Play compliant and hot-pluggable.

Q2: Windows is unable to recognize my hardware. What should I do?

A2: First, make sure your computer meets the minimum requirements as specified in Section 1 of this Quick Installation Guide. Second, try plugging the adapter into a different USB port.

Q3: Windows recognizes my new hardware, but I'm unable to connect to my network. What should I do?

A3: First, verify that the network cable is securely connected from your switch or router to your adapter. Second, verify that the LEDs on your adapter are lit. Third, verify that the TCP/IP settings are set to **Obtain an IP address automatically**.

Q4: How do I install this device on Windows 98SE and ME?

A4: Refer to the User Guide included on the Driver CD-ROM for installation instructions.

If you still encounter problems or have any questions regarding the **TU2-ET100**, please refer to the User's Guide included on the Driver CD-ROM or contact TRENDnet's Technical Support Department.

Certifications

This equipment has been tested and found to comply with FCC and CE Rules.

Operation is subject to the following two conditions:

- (1) This device may not cause harmful interference.
- (2) This device must accept any interference received. Including interference that may cause undesired operation.



Waste electrical and electronic products must not be disposed of with household waste. Please recycle where facilities exist. Check with you Local Authority or Retailer for recycling advice.



NOTE: THE MANUFACTURER IS NOT RESPONSIBLE FOR ANY RADIO OR TV INTERFERENCE CAUSED BY UNAUTHORIZED MODIFICATIONS TO THIS EQUIPMENT. SUCH MODIFICATIONS COULD VOID THE USER'S AUTHORITY TO OPERATE THE EQUIPMENT.



TRENDnet Technical Support

US • Canada

Toll Free Telephone: 1(866) 845-3673

24/7 Tech Support



Europe (Germany • France • Italy • Spain • Switzerland • UK)

Toll Free Telephone: +00800 60 76 76 67

English/Espanol - 24/7

Francais/Deutsch - 11am-8pm, Monday - Friday MET

Worldwide

Telephone: +(31) (0) 20 504 05 35

English/Espanol - 24/7

Francais/Deutsch - 11am-8pm, Monday - Friday MET

Product Warranty Registration

Please take a moment to register your product online.

Go to TRENDnet's website at <http://www.trendnet.com>

TRENDnet
3135 Kashiwa Street
Torrance, CA 90505
USA