



Lühike paigaldusjuhend



**TU-PS2**

Eesti .....	1
1. Enne alustamist .....	1
2. Riistvara paigaldamine .....	2
Tõrkeotsing .....	5

# 1. Enne alustamist



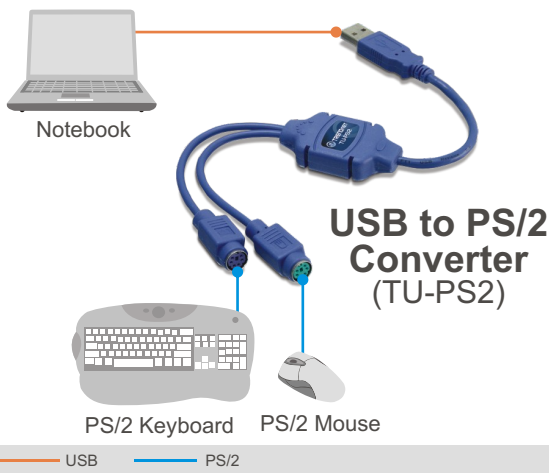
## Pakendi sisu

- TU-PS2
- Lühike paigaldusjuhend

## Minimaalsed nõuded süsteemile

- Arvuti vaba USB 1.1 või 2.0 pordiga
- Keskprotsessor: 300MHz või rohkem/ 800MHz või rohkem (Windows Vista)
- Mälu: 256MB RAM või rohkem/ 512MB RAM või rohkem (Windows Vista)
- Windows Vista/2003 Server/XP/2000/ME/98SE, Linux, Unix, Netware 4.11, Mac OS 8.6~10.4)

## Rakendus



## 2. Riistvara paigaldamine

Märkus: Mugavamaks kasutamiseks on adapteri ühenduspistikud värvidega märgistatud (PS/2 hiir rohelisega ja PS/2 klaviatuur punakaslillaga).

1. Lülita arvuti sisse ja oota kuni see startup-l lõpetab.



2. Ühendage adapter oma arvuti vabasse USB porti.



3. Ühendage PS/2 hiir ja PS/2 klaviatuur TU-PS2 adapteriga..

Märkus: Windows ME/2000/XP/2003 Server/XP/Vista, Mac OS korral paigaldatakse draiverid automaatselt. Windows 98SE korral jätkake punktist 4.

## Windows 98SE

4. Klõikige **Next** nupul.



5. Valige **Search for the best driver for you device (Recommended)** ja seejärel klõikige **Next** nupul.



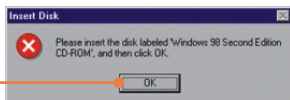
6. Klõikige **Next** nupul.



7. Klõikige **Next** nupul.



8. Sisestage Windows 98SE CD-plaat CD-kettaseadmesse ja seejärel klikkige **OK** nupul.



9. Klikkige **Finish** nupul.



10. Teise PS/2 pordi paigaldamiseks korrake punkte 4-9.

**Su paigaldus on nüüd valmis.**

#### **Teie seadmete registreerimine**

Et kindlustada teid parima teeninduse ja toega, palun leidke moment, et registreerida teie toode OnLines - [www.Trendnet.com/register](http://www.Trendnet.com/register)  
Täname, et te valisite TRENDnet'i.

## K1: Kus on TU-PS2 draiveri CD-plaat?

**V1:** TU-PS2 ei vaja spetsiaalseid draivereid; see kasutab ühiseid arvuti operatsioonisüsteemis olevaid USB draivereid.








## K2: Kas ma saan kokku ja lahti ühendada USB kaablit, kui arvuti on sisse lülitatud?

**V2:** Jah, te saate kokku ja lahti ühendada USB kaablit, kui arvuti on sisse lülitatud, kuna USB liides on Plug-and-Play ja kuumühenduv.

## K3: Minu arvutil on USB liides, aga tundub, et USB port ei tööta. Mida ma peaksin tegema?

**V3:** Kontrollige, kas USB suvand on arvuti BIOSis lubatud. Samuti kontrollige device manager'i ja veenduge, et seal ei ole näha hüüumärki. BIOSi seadete kohta vaadake, palun, arvuti kasutamisujuhendist. Device manager'i juurdepääsuks paremklikkige My Computer, klõpsake Properties, klõpsake Hardware sakil ja seejärel klõpsake device manager`il.

## K4: Millised on üleminekud PS/2 ja Sun Microsystem klaviatuuride vahel?

Sun Microsystem klaviatuur	Windows PS/2 klaviatuur	Sun Microsystem klaviatuur	Windows PS/2 klaviatuur
Stop	L_Win & L_Alt	Copy	L_Win & F6
Props	L_Win & L_Ctrl	Paste	L_Win & F7
Compose	L_Win & L_Shift	Cut	L_Win & F8
Front	L_Win & F1	Help	L_Win & F11
Open	L_Win & F2	Power 	L_Win & F12
Find	L_Win & F3	Mute  	L_Win & "1"
Again	L_Win & F4	V_DN  	L_Win & "2"
Undo	L_Win & F5	V_UP  	L_Win & "3"

Kui teil endiselt esineb probleeme või on küsimusi TU-PS2 kohta, võtke ühendust TRENDneti tehnilise toe osakonnaga.

## Limited Warranty

TRENDnet warrants its products against defects in material and workmanship, under normal use and service, for the following lengths of time from the date of purchase.

### TU-PS2 - 2 Year Warranty

If a product does not operate as warranted above during the applicable warranty period, TRENDnet shall, at its option and expense, repair the defective product or part, deliver to customer an equivalent product or part to replace the defective item, or refund to customer the purchase price paid for the defective product. All products that are replaced will become the property of TRENDnet. Replacement products may be new or reconditioned.

TRENDnet shall not be responsible for any software, firmware, information, or memory data of customer contained in, stored on, or integrated with any products returned to TRENDnet pursuant to any warranty.

There are no user serviceable parts inside the product. Do not remove or attempt to service the product by any unauthorized service center. This warranty is voided if (i) the product has been modified or repaired by any unauthorized service center, (ii) the product was subject to accident, abuse, or improper use (iii) the product was subject to conditions more severe than those specified in the manual.

Warranty service may be obtained by contacting TRENDnet office within the applicable warranty period for a Return Material Authorization (RMA) number, accompanied by a copy of the dated proof of the purchase. Products returned to TRENDnet must be pre-authorized by TRENDnet with RMA number marked on the outside of the package, and sent prepaid, insured and packaged appropriately for safe shipment.



WARRANTIES EXCLUSIVE: IF THE TRENDnet PRODUCT DOES NOT OPERATE AS WARRANTED ABOVE, THE CUSTOMER'S SOLE REMEDY SHALL BE, AT TRENDnet'S OPTION, REPAIR OR REPLACEMENT. THE FOREGOING WARRANTIES AND REMEDIES ARE EXCLUSIVE AND ARE IN LIEU OF ALL OTHER WARRANTIES, EXPRESSED OR IMPLIED, EITHER IN FACT OR BY OPERATION OF LAW, STATUTORY OR OTHERWISE, INCLUDING WARRANTIES OF MERCHANTABILITY AND FITNESS FOR A PARTICULAR PURPOSE. TRENDnet NEITHER ASSUMES NOR AUTHORIZES ANY OTHER PERSON TO ASSUME FOR IT ANY OTHER LIABILITY IN CONNECTION WITH THE SALE, INSTALLATION MAINTENANCE OR USE OF TRENDnet'S PRODUCTS.

TRENDnet SHALL NOT BE LIABLE UNDER THIS WARRANTY IF ITS TESTING AND EXAMINATION DISCLOSE THAT THE ALLEGED DEFECT IN THE PRODUCT DOES NOT EXIST OR WAS CAUSED BY CUSTOMER'S OR ANY THIRD PERSON'S MISUSE, NEGLIGENCE, IMPROPER INSTALLATION OR TESTING, UNAUTHORIZED ATTEMPTS TO REPAIR OR MODIFY, OR ANY OTHER CAUSE BEYOND THE RANGE OF THE INTENDED USE, OR BY ACCIDENT, FIRE, LIGHTNING, OR OTHER HAZARD.

LIMITATION OF LIABILITY: TO THE FULL EXTENT ALLOWED BY LAW TRENDnet ALSO EXCLUDES FOR ITSELF AND ITS SUPPLIERS ANY LIABILITY, WHETHER BASED IN CONTRACT OR TORT (INCLUDING NEGLIGENCE), FOR INCIDENTAL, CONSEQUENTIAL, INDIRECT, SPECIAL, OR PUNITIVE DAMAGES OF ANY KIND, OR FOR LOSS OF REVENUE OR PROFITS, LOSS OF BUSINESS, LOSS OF INFORMATION OR DATA, OR OTHER FINANCIAL LOSS ARISING OUT OF OR IN CONNECTION WITH THE SALE, INSTALLATION, MAINTENANCE, USE, PERFORMANCE, FAILURE, OR INTERRUPTION OF THE POSSIBILITY OF SUCH DAMAGES, AND LIMITS ITS LIABILITY TO REPAIR, REPLACEMENT, OR REFUND OF THE PURCHASE PRICE PAID, AT TRENDnet'S OPTION. THIS DISCLAIMER OF LIABILITY FOR DAMAGES WILL NOT BE AFFECTED IF ANY REMEDY PROVIDED HEREIN SHALL FAIL OF ITS ESSENTIAL PURPOSE.

Governing Law: This Limited Warranty shall be governed by the laws of the state of California.

AC/DC Power Adapter, Cooling Fan, Cables and Power Supply carry a 1 Year Warranty

### Sertifikaadid:

Antud seade on testitud ja leitud vastavaks FCC ja CE seadustega.

1. Antud seade ei põhjusta kahjulikke häireid.
2. Antud seade peab vastu võtma kõik saadud häired, sealhulgas häired, mis võivad põhjustada soovimatut tööd.



Elektri- ja elektroonikatoodete jäätmeid ei tohi ära visata koos olmejäätkeidega. Abivahendite olemasolu korral palume ümber töötlemiseks sorteerida. Küsi nõu jäätmete ümber töötlemise kohta oma kohalikult jaemüüjalt.



**MÄRKUS:** TOOTJA EI VASTUTA ÜHEGI TV VÕI RAADIO HÄIRETE EEST, MIS ON PÕHJUSTATUD ANTUD SEADME LUBAMATUST ÜMBEREHITAMISEST. IGASUGUNE ÜMBERMODIFITSEERIMINE TÜHISTAB AUTORIVASTUTUSE ANTUD SEADMELE.



## TRENDnet Technical Support

### US • Canada

**Toll Free Telephone:** 1(866) 845-3673

24/7 Tech Support

### Europe (Germany • France • Italy • Spain • Switzerland • UK)

**Toll Free Telephone:** +00800 60 76 76 67

English/Espanol - 24/7

Francais/Deutsch - 11am-8pm, Monday - Friday MET

### Worldwide

**Telephone:** +[31] [0] 20 504 05 35

English/Espanol - 24/7

Francais/Deutsch - 11am-8pm, Monday - Friday MET



## Product Warranty Registration

Please take a moment to register your product online.

Go to TRENDnet's website at <http://www.trendnet.com/register>

**TRENDnet**<sup>®</sup>  
20675 Manhattan Place  
Torrance, CA 90501  
USA