

TU-P1284

**USB to Parallel Printer Converter
Quick Installation Guide**

**Guide d'installation rapide du
convertisseur d'imprimante parallèle en imprimante USB**

**Anleitung zur Schnellinstallation des
USB-Paralleldrucker-Konvertierer**

**Guía de Instalación Rápida
Convertidor para Impresora de puerto USB a Paralelo.**

Version 08.10.04



TRENDnet[®]
TRENDware, USA
What's Next in Networking

Table of Contents

English	1
1. Prepare for Installation	1
2. Introduction	2
3. Product Features	3
4. Hardware Installation	4
5. Install Drivers	5
6. Verify Installation	7
Troubleshooting	11

English QIG

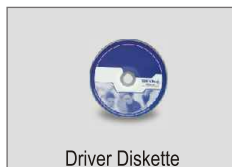
1. Prepare for Installation

Thank you for purchasing TRENDnet's TU-P1284 USB to Parallel Printer Converter.

This guide will help you set up your USB to Parallel Printer Converter. Following the installation should be quick and easy. If you run into problems, please refer to the Troubleshooting section. If you need further technical support, please visit www.TRENDNET.com or call technical support by phone.

Verify Package Contents

Please make sure you have everything in the box:



Minimum Hardware Requirements

1. Pentium PC or faster with at least 32MB RAM
2. USB 1.1/2.0 port on your computer
3. Windows XP, 2000, ME, 98SE

2. Introduction

The TU-P1284 is an external USB to Parallel Printer Converter that allows you to connect to a parallel printer via your computer's USB interface.

Hardware and Software Support

The TU-P1284 USB to Parallel Converter is compatible with all popular standard parallel printers and supports bidirectional printing. It is compatible with the following operating systems: Windows 98SE/ME/2000/XP.

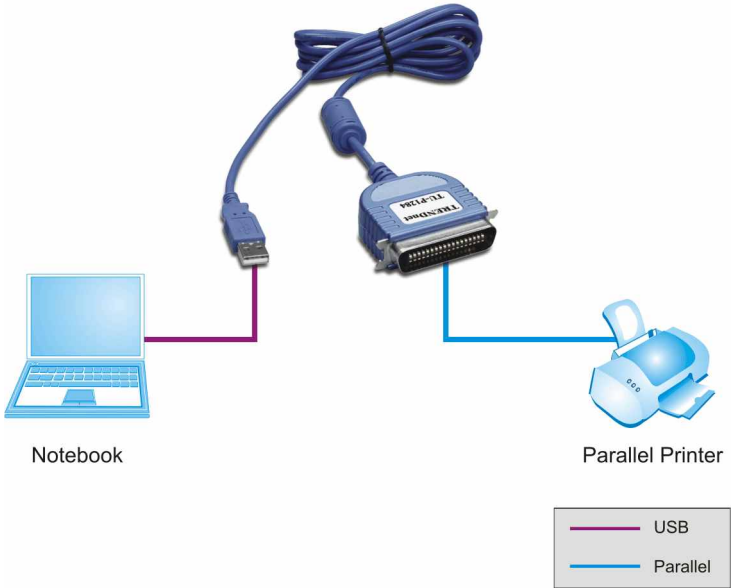
Plug-N-Play and Hot-Pluggable

Because the TU-P1284 USB to Parallel Converter connects to your computer via the USB interface, it is both Plug-and-Play and Hot-Pluggable.

The TRENDnet's TU-P1284 USB to Parallel Converter is perfect for use at home or in the office.

3. Product Features

USB TO PARALLEL 1284 CONVERTER (TU-P1284)



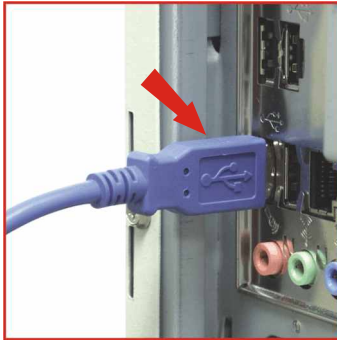
4. Hardware Installation

Because the TU-P1284 is hot-pluggable, you can connect or disconnect the TU-P1284 while the computer is on.

1. Connect the TU-P1284's parallel connector to your printer's parallel port, and turn on the printer.



2. Connect the TU-P1284's USB connector to your computer's USB port.



5. Install Drivers

Windows 2000/XP

1. Once you connect the TU-P1284 to your computer, Windows 2000/XP will automatically detect and install a standard USB Printing Support driver for the TU-P1284.

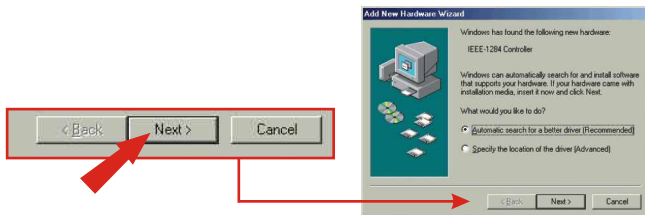
Note: If you are installing a new printer, you may need to install the driver for your printer. To do so, follow the Add Printer Wizard's instructions. Once your printer is installed, proceed to the Verify Installation section.

Congratulations!
Installation is now complete.

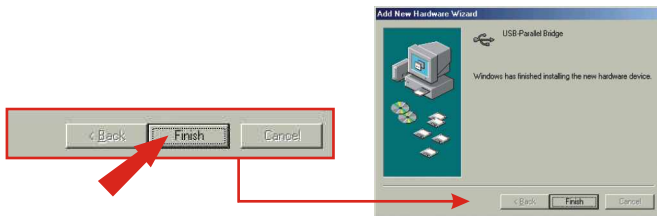
Windows 98SE/ME

1. Once you connect the TU-P1284 to your computer, Windows 98SE/Me will automatically detect the device. Insert the included TU-P1284 Driver Diskette into your computer's Floppy drive and click Next to begin installing the driver.

Note: If you're prompted to choose a source to search, select your floppy drive and click **Next**.



2. Click **Finish**.

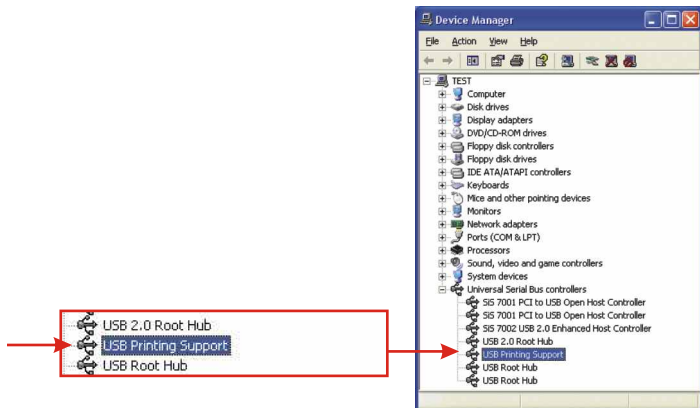


Note: If you are installing a new printer, you may need to install the driver for your printer. To do so, follow the Add Printer Wizard's instructions. If Windows asks you which port the printer is on, select the LPT2: USB to Parallel Port. Once your printer is installed, proceed to the Verify Installation section.

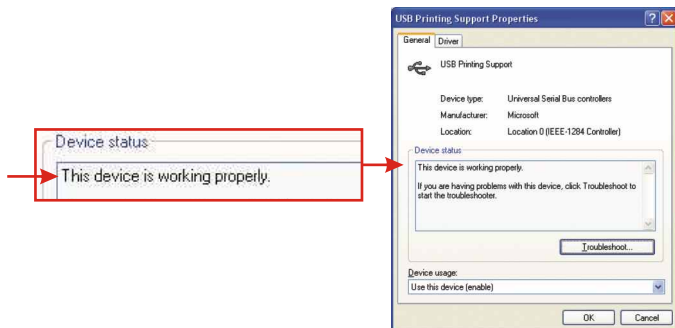
6. Verify Installation

Windows 2000/XP

1. Click **Start**, and then click **Control Panel**.
2. Double-click the **System** icon. On the **Hardware** tab, click **Device Manager** tab.
3. Expand the “Universal Serial Bus controllers” heading to verify that the **USB Printing Support** device has been installed.

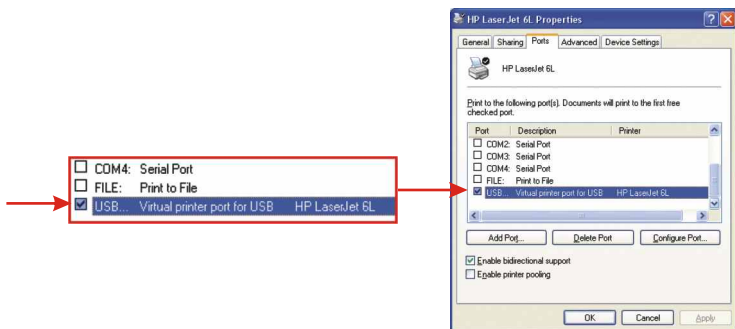


4. Double-click the **USB Printing Support** device to open its Properties window.
5. Verify that the device status message says **This device is working properly**.



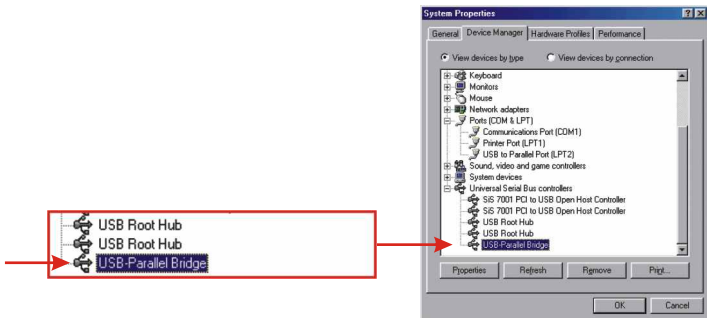
6. Click **Start**, and click **Settings**. Then, click **Printers and Faxes**.
7. Right-click your printer's icon and click on **Properties**.
8. In the **Printer Properties** window, click the **Ports** tab.
9. Verify that your printer and the **Virtual printer port for USB** have been installed.

Note: If your printer is not configured to print to the **Virtual printer Port for USB**, configure your printer to print to the **Virtual printer Port for USB**.

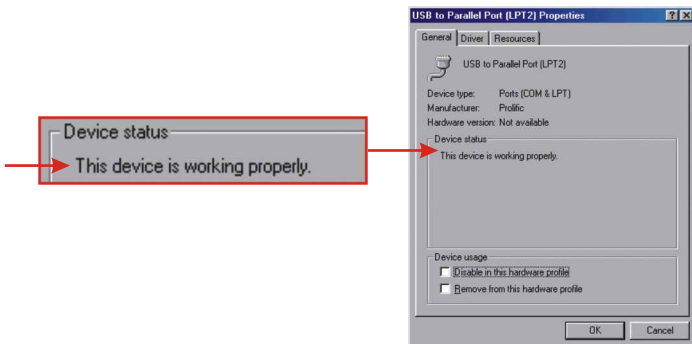


Windows 98SE/ME

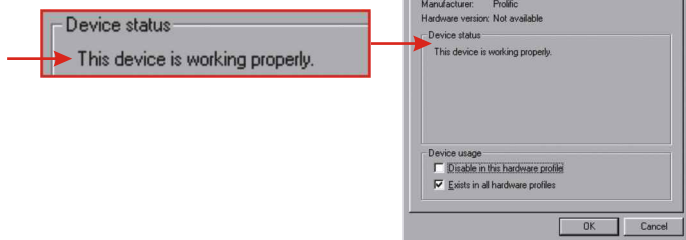
1. Click **Start**, click **Settings**, and then click on **Control Panel**.
2. Double-click the **System** icon, and click the **Device Manager** tab.
3. Expand the “Ports (COM & LPT)” heading to verify that the **USB to Parallel Port** device has been installed.
4. Expand the “Universal Serial Bus controllers” heading to verify that the **USB-Parallel Bridge** device has been installed.



5. Double-click the **USB to Parallel Port** device to open its Properties window.
6. Verify that the device status message says “This device is working properly,” and click **OK**.

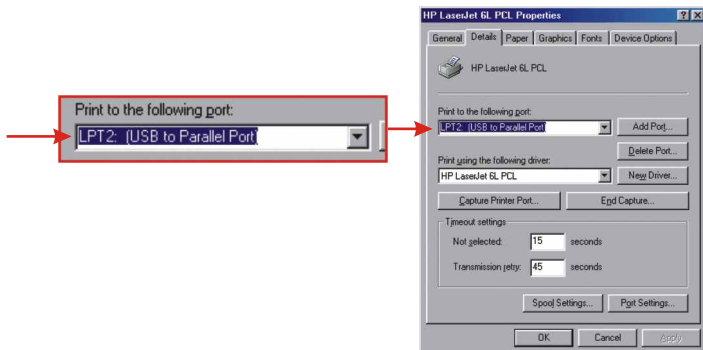


7. Double-click the **USB-Parallel Bridge** device to open its Properties window.
8. Verify that the device status message says “This device is working properly,” and click **OK**.



9. Click **Start**, click **Settings**, and then click **Printers**.
10. Right-click the icon for your printer, and click **properties**.
11. In the **Printer Properties** window, click the **Details** tab.
12. Verify that your printer has been installed and is configured to print to the **USB to Parallel Port**.

Note: If your printer is not configured to print to the **USB to Parallel Port**, click on the drop-down menu and set your printer to print to the **USB to Parallel Port**.



Q1: How can I uninstall the USB to Parallel Converter Driver?

A1: Unplug the USB to Parallel Converter from your computer and run the UNINSTALL.EXE program located on the included USB Parallel Converter Driver Diskette.

Q2: Can I connect or disconnect the USB cable while the computer is on?

A2: Yes, you can connect or disconnect the USB cable while the computer is on, because the USB interface is Plug-and-Play and hot-pluggable.

Q3: My computer has a USB interface but the USB port doesn't seem to work. What should I do?

A3: You must enable the USB option in your BIOS settings for your computer's USB port to work. For more information regarding BIOS settings, please refer to your computer's User Manual.

If you have any questions regarding the TU-P1284 USB to Parallel Converter, please contact Trendware Technical Support Department

Contact Technical Support

Telephone: +1-310-626-6252

Fax: +1-310-626-6267

Website: www.TRENDNET.com

E-mail: support@trendware.com

Technical Support Hours

7:00AM ~ 6:00PM, Monday through Friday

Pacific Standard Time (except holidays)

Certifications

This equipment has been tested and found to comply with Part 15 of the FCC Rules. Operation is subject to the following two conditions:

- (1) This device may not cause harmful interference.
- (2) This device must accept any interference received.
Including interference that may cause undesired operation.

This equipment is in compliance with the requirements of the following regulations: EN 55 022: CLASS B

TRENDnet[®]

TRENDware, USA

What's Next in Networking

Product Warranty Registration

Please take a moment to register your product online.
Go to TRENDware's website at <http://www.TRENDNET.com>

TRENDware International, Inc.
3135 Kashiwa Street
Torrance, CA 90505

<http://www.TRENDNET.com>