



## Quick Installation Guide



**TU-ET100C**

# Table of Contents

Español .....	1
1. Antes de iniciar .....	1
2. Cómo se instala .....	2
Troubleshooting .....	5

# 1. Antes de iniciar



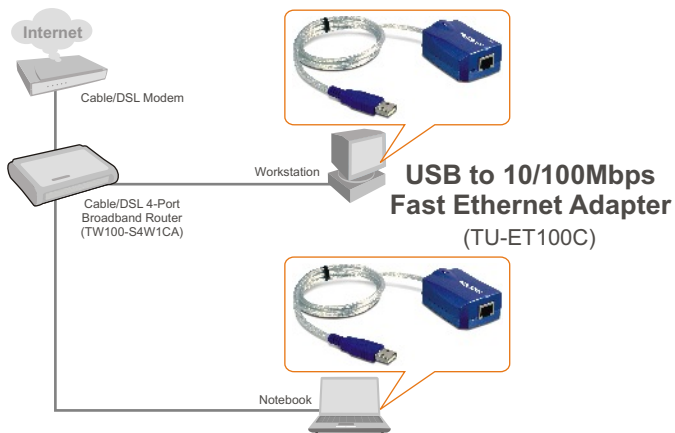
## Contenidos del paquete

- TU-ET100C
- Guía de instalación rápida
- CD-ROM del controlador

## Requisitos del sistema

- Unidad de CD-ROM
- CPU: 300 MHz o superior
- Memoria: 256 MB o superior
- PC con un puerto USB 1.1 disponible
- Windows XP/2000/ME/98SE

## Aplicación



## 2. Cómo se instala

1. Inserte el CD-ROM del controlador en su unidad de CD-ROM.

2. Conecte el adaptador a un puerto USB disponible de su PC.



### Windows XP

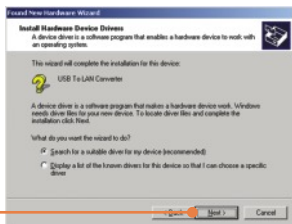
3. Los controladores se instalarán de manera automática.

### Windows 2000

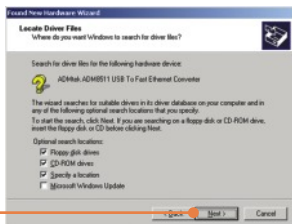
3. Haga clic en **Next** (Siguiente).



4. Haga clic en **Search for a suitable driver for my device** (Buscar un controlador apropiado para mi dispositivo) (**Recomendado**) y después haga clic en **Next** (Siguiente).



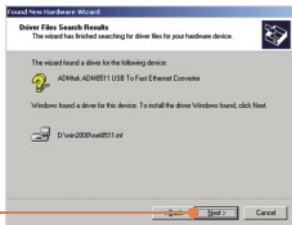
5. Haga clic en **Specify a location** (Especificar una ubicación) y después pulse **Next** (Siguiente).



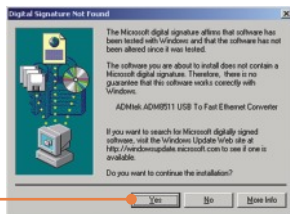
6. Escriba **D:\Win2000**, donde "D" es la letra de la unidad asignada a su unidad de CD-ROM . Después haga clic en **OK**.



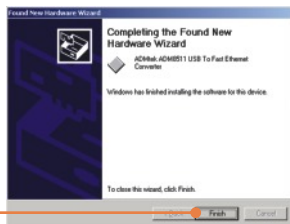
7. Haga clic en **Next** (Siguiente).



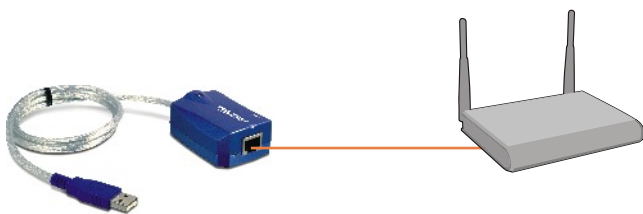
8. Haga clic en **Yes** (Sí).



9. Haga clic en **Finish** (Finalizar).



10. Conecte el cable RJ-45 del adaptador a un conmutador, enrutador o cable Módem o DSL.



## La instalación ha sido completada

Para Windows 98SE/ME, refiérase por favor a la sección Resolución de problemas.

**Q1: Can I connect or disconnect TU-ET100C while the computer is on?**

**A1:** Yes, you can connect or disconnect TU-ET100C while the computer is on because the USB interface is Plug-and-Play compliant and hot-pluggable.

**Q2: Windows is unable to recognize my hardware. What should I do?**

**A2:** First, make sure your computer meets the minimum requirements as specified in Section 1 of this Quick Installation Guide. Second, try plugging the adapter into a different USB port.

**Q3: Windows recognizes my new hardware, but I'm unable to connect to my network. What should I do?**

**A3:** First, verify that the network cable is securely connected from your switch or router to your adapter. Second, verify that the LED on your adapter is lit. Third, verify that the TCP/IP settings are set to **Obtain an IP address automatically**.

**Q4: How do I install this device on Windows ME?**

**A4:** Follow the steps below:

1. Insert the **Driver CD-ROM** into your computer's CD-ROM drive.
2. When the **Add New Hardware Wizard** appears, select **Automatic search for a better driver (Recommended)**, click **Next**, and then click **Finish**.
3. Click **Yes** to restart your computer.

**Q5: How do I install this device on Windows 98?**

**A5:** : Follow the steps below:

1. Insert the **Driver CD-ROM** into your computer's CD-ROM drive.
2. When the **Add New Hardware Wizard** appears, click **Next**.
3. Select **Search for the best driver for your device (Recommended)**, and then click **Next**.
4. Click **Specify a location**, type in **D:\Win98** and then click **Next**.
5. Click **Next**.
6. Insert your **Windows 98SE CD** into your CD-ROM driver and then click **OK**.
7. Click **Finish**.
8. Click **Yes** to restart your computer.

If you still encounter problems or have any questions regarding the **TU-ET100C**, please refer to the User's Guide included on the Driver CD-ROM or contact TRENDnet's Technical Support Department.

## Limited Warranty

TRENDnet warrants its products against defects in material and workmanship, under normal use and service, for the following lengths of time from the date of purchase.

### **TU-ET100C - 5-Year Warranty**

If a product does not operate as warranted above during the applicable warranty period, TRENDnet shall, at its option and expense, repair the defective product or deliver to customer an equivalent product to replace the defective item. All products that are replaced will become the property of TRENDnet. Replacement products may be new or reconditioned.

TRENDnet shall not be responsible for any software, firmware, information, or memory data of customer contained in, stored on, or integrated with any products returned to TRENDnet pursuant to any warranty.

There are no user serviceable parts inside the product. Do not remove or attempt to service the product through any unauthorized service center. This warranty is voided if (i) the product has been modified or repaired by any unauthorized service center, (ii) the product was subject to accident, abuse, or improper use (iii) the product was subject to conditions more severe than those specified in the manual.

Warranty service may be obtained by contacting TRENDnet office within the applicable warranty period for a Return Material Authorization (RMA) number, accompanied by a copy of the dated proof of the purchase. Products returned to TRENDnet must be pre-authorized by TRENDnet with RMA number marked on the outside of the package, and sent prepaid, insured and packaged appropriately for safe shipment.



WARRANTIES EXCLUSIVE: IF THE TRENDNET PRODUCT DOES NOT OPERATE AS WARRANTED ABOVE, THE CUSTOMER'S SOLE REMEDY SHALL BE, AT TRENDNET'S OPTION, REPAIR OR REPLACEMENT. THE FOREGOING WARRANTIES AND REMEDIES ARE EXCLUSIVE AND ARE IN LIEU OF ALL OTHER WARRANTIES, EXPRESSED OR IMPLIED, EITHER IN FACT OR BY OPERATION OF LAW, STATUTORY OR OTHERWISE, INCLUDING WARRANTIES OF MERCHANTABILITY AND FITNESS FOR A PARTICULAR PURPOSE. TRENDNET NEITHER ASSUMES NOR AUTHORIZES ANY OTHER PERSON TO ASSUME FOR IT ANY OTHER LIABILITY IN CONNECTION WITH THE SALE, INSTALLATION, MAINTENANCE OR USE OF TRENDNET'S PRODUCTS.

TRENDNET SHALL NOT BE LIABLE UNDER THIS WARRANTY IF ITS TESTING AND EXAMINATION DISCLOSE THAT THE ALLEGED DEFECT IN THE PRODUCT DOES NOT EXIST OR WAS CAUSED BY CUSTOMER'S OR ANY THIRD PERSON'S MISUSE, NEGLIGENCE, IMPROPER INSTALLATION OR TESTING, UNAUTHORIZED ATTEMPTS TO REPAIR OR MODIFY, OR ANY OTHER CAUSE BEYOND THE RANGE OF THE INTENDED USE, OR BY ACCIDENT, FIRE, LIGHTNING, OR OTHER HAZARD.

LIMITATION OF LIABILITY: TO THE FULL EXTENT ALLOWED BY LAW TRENDNET ALSO EXCLUDES FOR ITSELF AND ITS SUPPLIERS ANY LIABILITY, WHETHER BASED IN CONTRACT OR TORT (INCLUDING NEGLIGENCE), FOR INCIDENTAL, CONSEQUENTIAL, INDIRECT, SPECIAL, OR PUNITIVE DAMAGES OF ANY KIND, OR FOR LOSS OF REVENUE OR PROFITS, LOSS OF BUSINESS, LOSS OF INFORMATION OR DATA, OR OTHER FINANCIAL LOSS ARISING OUT OF OR IN CONNECTION WITH THE SALE, INSTALLATION, MAINTENANCE, USE, PERFORMANCE, FAILURE, OR INTERRUPTION OF THE POSSIBILITY OF SUCH DAMAGES, AND LIMITS ITS LIABILITY TO REPAIR, REPLACEMENT, OR REFUND OF THE PURCHASE PRICE PAID, AT TRENDNET'S OPTION. THIS DISCLAIMER OF LIABILITY FOR DAMAGES WILL NOT BE AFFECTED IF ANY REMEDY PROVIDED HEREIN SHALL FAIL OF ITS ESSENTIAL PURPOSE.

Governing Law: This Limited Warranty shall be governed by the laws of the state of California.

Note: AC/DC Power Adapter, Cooling Fan, Power Supply and Cables carry 1-Year Warranty

## Certifications

This equipment has been tested and found to comply with FCC and CE Rules. Operation is subject to the following two conditions:

- (1) This device may not cause harmful interference.
- (2) This device must accept any interference received. Including interference that may cause undesired operation.



Waste electrical and electronic products must not be disposed of with household waste. Please recycle where facilities exist. Check with you Local Authority or Retailer for recycling advice.



**NOTE:** THE MANUFACTURER IS NOT RESPONSIBLE FOR ANY RADIO OR TV INTERFERENCE CAUSED BY UNAUTHORIZED MODIFICATIONS TO THIS EQUIPMENT. SUCH MODIFICATIONS COULD VOID THE USER'S AUTHORITY TO OPERATE THE EQUIPMENT.

## ADVERTENCIA

En todos nuestros equipos se mencionan claramente las características del adaptador de alimentación necesario para su funcionamiento. El uso de un adaptador distinto al mencionado puede producir daños físicos y/o daños al equipo conectado. El adaptador de alimentación debe operar con voltaje y frecuencia de la energía eléctrica domiciliar existente en el país o zona de instalación.



## TRENDnet Technical Support

### US • Canada

**Toll Free Telephone:** 1(866) 845-3673

24/7 Tech Support



### Europe (Germany • France • Italy • Spain • Switzerland • UK)

**Toll Free Telephone:** +00800 60 76 76 67

English/Espanol - 24/7

Francais/Deutsch - 11am-8pm, Monday - Friday MET

### Worldwide

**Telephone:** +(31) (0) 20 504 05 35

English/Espanol - 24/7

Francais/Deutsch - 11am-8pm, Monday - Friday MET

## Product Warranty Registration

Please take a moment to register your product online.

Go to TRENDnet's website at <http://www.trendnet.com>

**TRENDnet**

20675 Manhattan Place

Torrance, CA 90501

USA