

TU-400E

4-port USB 2.0 Hub
Quick Installation Guide

Guide d'installation rapide du
Hub USB 2.0 à 4 ports

Anleitung zur Schnellinstallation des
4-Port USB-2.0-Hub

Guía de instalación rápida del
Hub USB 2.0 de 4 puertos

Version 10.06.04



TRENDnet[®]
TRENDware, USA
What's Next in Networking

Table of Contents

English	1
1. Prepare for Installation	1
2. Product Detail	2
3. Hardware Installation	3
4. Verify Installation	4
Troubleshooting	8

English QIG

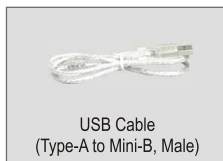
1. Prepare for Installation

Thank you for purchasing the TRENDnet TU-400E 4-port USB 2.0 Hub.

This guide will help you set-up your 4-port USB 2.0 Hub. Following the installations should be quick and easy. If you run into problems, please refer to the Troubleshooting section. If you need further technical support, please visit www.TRENDNET.com or call technical support by phone.

Verify Package Contents

Please make sure you have everything in the box:

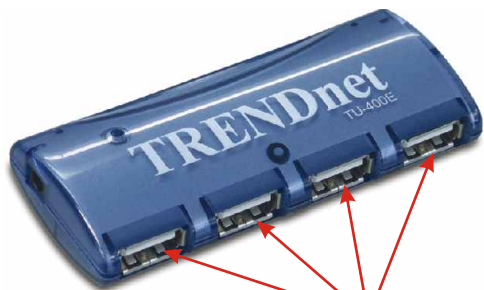


Minimum System Requirements

1. Pentium 300Mhz or faster with at least 64MB RAM
2. Computer with an available USB port
3. Windows XP, 2000, ME, 98SE or Mac OS X or later

2. Product Detail

The USB 2.0 Host hub has 4 high speed USB ports.



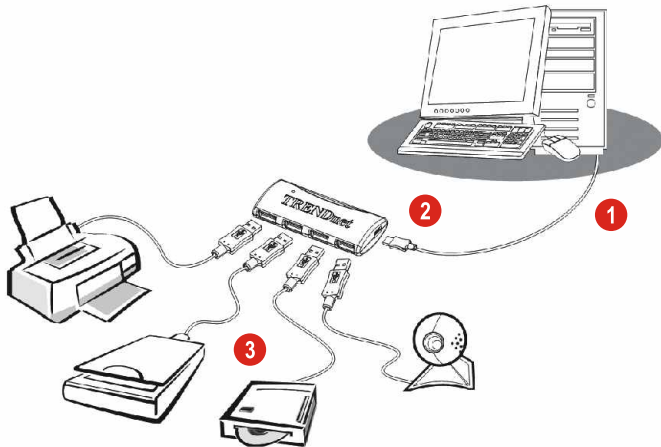
4 USB 2.0 ports for connecting external USB peripherals



Port for connecting USB Cable

3. Hardware Installation

1. Turn on your computer and allow your operating system to fully load into the system.
2. Connect the mini-B connector of the USB cable into your TU-400E, and connect the Type-A connector into your desktop or notebook's USB port.
3. Connect any device with a USB connection into a TU-400E USB port.



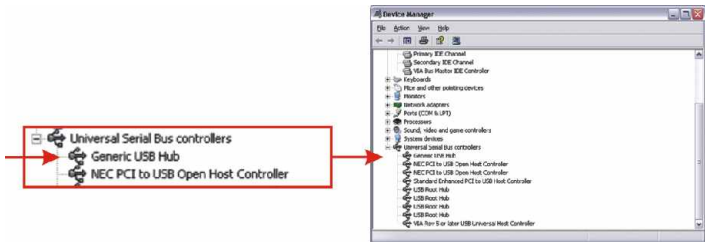
Your hardware installation is now complete.

Note: If you would like to verify that the TU-400E has been installed properly for your windows, go to the Verify Installation section.

4. Verify Installation

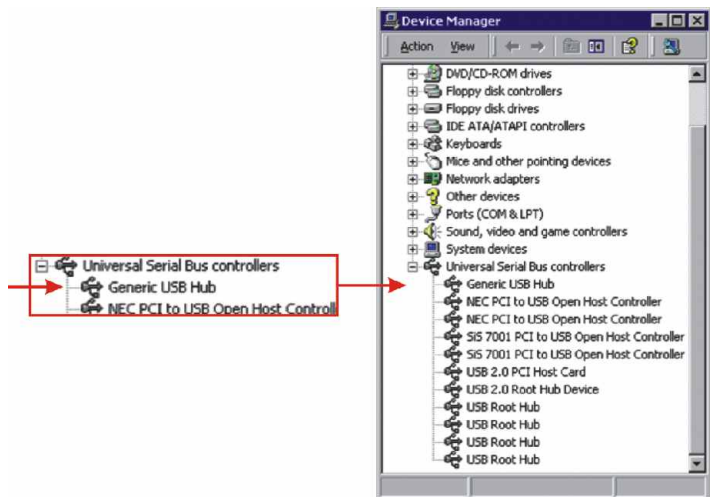
Windows XP

1. Click **Start**, and then click **Control Panel**.
2. Double-click the **System** icon. On the **Hardware** tab, click the **Device Manager** button.
3. Expand the “Universal Serial Bus controller” heading to verify that the **Generic USB Hub** has been installed.



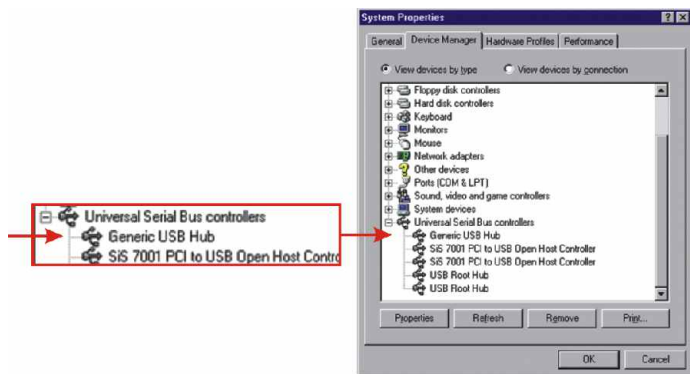
Windows 2000

1. Click **Start**, highlight **Settings**, and then click on **Control Panel**.
2. Double-click the **System** icon. On the **Hardware** tab, click the **Device Manager** button.
3. Expand the “Universal Serial Bus controller” heading to verify that the **Generic USB Hub** has been installed.



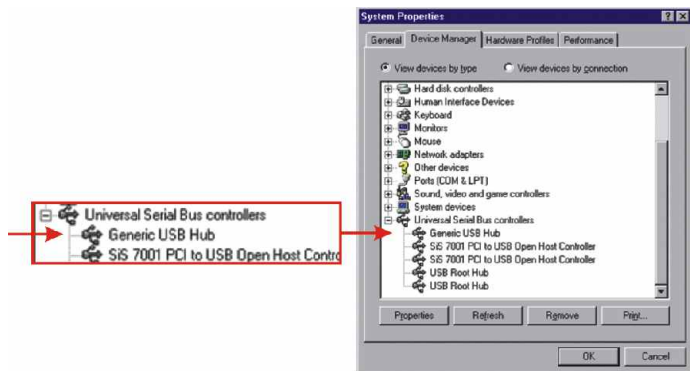
Windows ME

1. Click **Start**, highlight **Settings**, and then click on **Control Panel**.
2. Double-click the **System** icon, and click the **Device Manager** tab.
3. Expand the “Universal Serial Bus controller” heading to verify that the **Generic USB Hub** has been installed.



Windows 98SE

1. Click **Start**, highlight **Settings**, and then click on **Control Panel**.
2. Double-click the **System** icon, and click the **Device Manager** tab.
3. Expand the “Universal Serial Bus controller” heading to verify that the **Generic USB Hub** has been installed.



Troubleshooting

Q1. Can I connect or disconnect the USB cable while the computer is on?

A1. Yes, you can connect or disconnect the USB cable, or any external USB device while the computer is on because the USB interface is Plug-and-Play and hot-pluggable.

Q2. I have a USB 1.1 cable, can it work with USB 2.0 devices?

A2. Yes, it works but it may cause problems for connecting high-speed USB 2.0 external peripherals. Therefore it is recommended that you use certified USB 2.0 cable.

Q3. After successful installation of the TU-400E USB 2.0 Hub, I connected my external USB device to the USB port, but it doesn't seem to work. What should I do?

A3. If you have an external AC power adapter that came with the external USB device, connect the AC power adapter to the device and power on the device. Also make sure that you have installed the correct driver for your external USB device in Windows.

If you have any questions regarding the TU-400E USB 2.0 Hub, please contact Trendware Technical Support Department.

Certifications

This equipment has been tested and found to comply with Part 15 of the FCC Rules. Operation is subject to the following two conditions:

- (1) This device may not cause harmful interference.
- (2) This device must accept any interference received.
Including interference that may cause undesired operation.

This equipment is in compliance with the requirements of the following regulations: EN 55 022: CLASS B



Contact Technical Support

Telephone: +1-310-626-6252
Fax: +1-310-626-6267
Website: www.TRENDNET.com
E-mail: support@trendware.com

Technical Support Hours

7:00AM ~ 6:00PM, Monday through Friday
Pacific Standard Time (except holidays)

TRENDnet[®]

TRENDware, USA

What's Next in Networking

Product Warranty Registration

Please take a moment to register your product online.
Go to TRENDware's website at <http://www.TRENDNET.com>

TRENDware International, Inc.
3135 Kashiwa Street
Torrance, CA 90505

<http://www.TRENDNET.com>