



## Quick Installation Guide



**TSE-IS401**

# Table of Contents

Deutsch .....	1
1. Bevor Sie anfangen .....	1
2. Installation der Hardware .....	2
3. Zugriff auf die Speichergeräte im TSE-IS401 .....	5
Troubleshooting .....	6

# 1. Bevor Sie anfangen



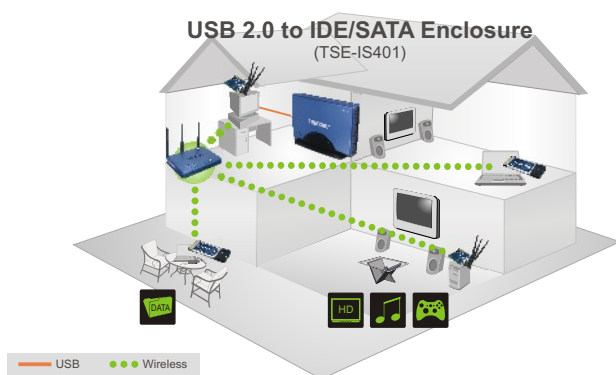
## Packungsinhalt

- TSE-IS401
- Anleitung zur Schnellinstallation
- Treiber CD
- USB-Kabel
- Stromkabel
- Netzteil (12DC, 2A)

## Systemanforderungen

- Computer mit freiem USB-2.0- oder -1.1-Port (Typ A)
  - Interne SATA I/II-, IDE-Festplatte
  - CD-ROM-Laufwerk
  - Prozessor: 300 MHz oder schneller
  - Speicher: 256MB oder mehr
  - Windows XP, 2000, ME, 98SE
- Hinweis: Festplatte NICHT im Lieferumfang enthalten.

## Anwendung



## 2. Installation der Hardware

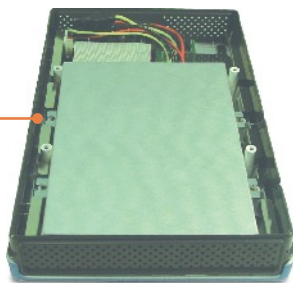
Hinweis: Es ist zu empfehlen, eine fabrikneue Festplatte zunächst neu zu formatieren. Weitere Informationen dazu finden Sie in Antwort 2 der Problemlösungen.

Hinweis: Anleitungen zur Installation des TSE-IS401 bei Windows 98SE finden Sie im Abschnitt „Problembehandlung“.

1. Entfernen Sie die 4 Schrauben von der Unterseite und nehmen Sie die Abdeckung ab.

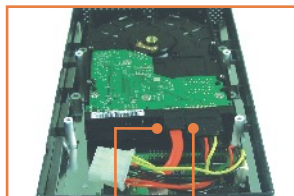


2. Entfernen Sie die 4 Schrauben und nehmen Sie die Metallabdeckung der Festplatte ab.



3. Kontrollieren Sie, dass die Jumbereinstellungen auf der Festplatte auf „Master“ stehen.

## Anschluss eines SATA-Laufwerks



4. Verbinden Sie SATA-Datenkabel und -Stromanschluss mit der SATA-Festplatte.

## Anschluss eines IDE-Laufwerks



4. Verbinden Sie IDE-Datenkabel und -Stromanschluss mit der IDE-Festplatte.

IDE-Datenkabel



IDE-Stromanschluss



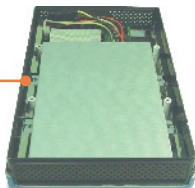
SATA-Stromanschluss



SATA-Datenkabel



5. Legen Sie die Metallabdeckung der Festplatte wieder auf und befestigen Sie sie mit den 4 Schrauben.



6. Schieben Sie die Abdeckung wieder auf und befestigen Sie sie mit den 4 Schrauben.



7. Verbinden Sie das Stromkabel mit dem Netzteil.

8. Verbinden Sie das externe Netzteil mit dem Speicherserver und stecken Sie es in eine Steckdose.

9. Verbinden Sie den TSE-IS401 über das mitgelieferte USB-Kabel mit Ihrem Computer.

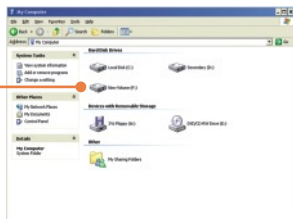
10. Schalten Sie die Geräte ein.

11. Die Treiber werden automatisch installiert.



**Ihre Installation ist beendet!**

1. Doppelklicken Sie auf **My Computer (Arbeitsplatz)**. Doppelklicken Sie dann unter **Network Drives (Netzlaufwerke)** auf ein bereitgestelltes Speichergerät.



**Sie können jetzt auf das Speichergerät zugreifen.**

Weitere Informationen zu den Konfigurations- und erweiterten Einstellungen des TSE-IS401 finden Sie im Abschnitt „Problembehandlung“ der Bedienungsanleitung auf der beiliegenden CD-ROM oder auf der Website von Trendnet unter [www.trendnet.com](http://www.trendnet.com). Die Konfiguration ist jetzt abgeschlossen.

**Q1: My computer does not recognize the TSE-IS401. What should I do?**

**A1:** First, verify that the computer meets the minimum requirements as listed in section 1. Second, make sure that you have plugged in the power into the unit and the power cord into an outlet. Third, try plugging the device into a different USB port on your computer.

**Q2: How do I format my brand new hard drive?**

**A2:** For Windows 2000/XP, go to **Start -> Settings -> Control Panel -> Administrative Tools -> Computer Management -> Disk Management**. If the **Initialize and Convert Disk Wizard** appears, click **Cancel**. Right click the **Unknown** drive, click **Initialize** and then click **OK**. Right click on the unallocated region of the hard drive and select **New Partition**. Follow the **New Partition Wizard** instructions then click **Finish**. The hard drive will automatically start the formatting process.

For Windows 98SE/ME, right click on **My Computer**, and then click **Device Manager**. Double-click on **Disk drives**, and then double-click on your hard drive. When the hard drive properties window appears, click on the **Settings** Tab. Check **Removable** in the **options** section, select an available drive letter for **Start drive letter** and then click **OK**. Click **Close**. Click **Yes** to restart the computer. Double click on **My Computer**, double-click on the hard drive and click **Yes** to format it.

**Q3: How do I install the TSE-IS401 on Windows 98SE?**

**A3:** 1) Insert the Driver CD-ROM into the CD-ROM drive  
2) Go to start -> run -> type in **D:\Driver\Win98\Setup.exe** and click **OK**. D represents the drive letter of your CD-ROM drive.  
3) Setup successful will appear. Click **OK**.  
4) Follows steps 1-10 in Section 2 to complete the installation.

**Q4: My computer does not recognize my hard drive(s)? What should I do?**

**A4:** First, verify that the device is installed properly. Right click on My Computer Properties. Click on **Hardware** and then **Device Manager**. Double click on **Disk Drives**. Make sure that your hard drive is listed and there is no yellow question mark or exclamation point. Second, if you are attaching a brand new hard drive, format the drive. Please refer to question 2 for more information. Third, the hard drive that is connected to the TSE-IS401 must be formatted in FAT-16 or FAT-32 in order for Windows 98SE or ME to recognize it

If you still encounter problems or have any questions regarding the **TSE-IS401**, please contact TRENDnet's Technical Support Department.



## Limited Warranty

TRENDnet warrants its products against defects in material and workmanship, under normal use and service, for the following lengths of time from the date of purchase.

### **TSE-IS401 - 2-Year Warranty**

If a product does not operate as warranted above during the applicable warranty period, TRENDnet shall, at its option and expense, repair the defective product or deliver to customer an equivalent product to replace the defective item. All products that are replaced will become the property of TRENDnet. Replacement products may be new or reconditioned.

TRENDnet shall not be responsible for any software, firmware, information, or memory data of customer contained in, stored on, or integrated with any products returned to TRENDnet pursuant to any warranty.

There are no user serviceable parts inside the product. Do not remove or attempt to service the product through any unauthorized service center. This warranty is voided if (i) the product has been modified or repaired by any unauthorized service center, (ii) the product was subject to accident, abuse, or improper use (iii) the product was subject to conditions more severe than those specified in the manual.

Warranty service may be obtained by contacting TRENDnet office within the applicable warranty period for a Return Material Authorization (RMA) number, accompanied by a copy of the dated proof of the purchase. Products returned to TRENDnet must be pre-authorized by TRENDnet with RMA number marked on the outside of the package, and sent prepaid, insured and packaged appropriately for safe shipment.

WARRANTIES EXCLUSIVE: IF THE TRENDNET PRODUCT DOES NOT OPERATE AS WARRANTED ABOVE, THE CUSTOMER'S SOLE REMEDY SHALL BE, AT TRENDNET'S OPTION, REPAIR OR REPLACEMENT. THE FOREGOING WARRANTIES AND REMEDIES ARE EXCLUSIVE AND ARE IN LIEU OF ALL OTHER WARRANTIES, EXPRESSED OR IMPLIED, EITHER IN FACT OR BY OPERATION OF LAW, STATUTORY OR OTHERWISE, INCLUDING WARRANTIES OF MERCHANTABILITY AND FITNESS FOR A PARTICULAR PURPOSE. TRENDNET NEITHER ASSUMES NOR AUTHORIZES ANY OTHER PERSON TO ASSUME FOR IT ANY OTHER LIABILITY IN CONNECTION WITH THE SALE, INSTALLATION, MAINTENANCE OR USE OF TRENDNET'S PRODUCTS.

TRENDNET SHALL NOT BE LIABLE UNDER THIS WARRANTY IF ITS TESTING AND EXAMINATION DISCLOSE THAT THE ALLEGED DEFECT IN THE PRODUCT DOES NOT EXIST OR WAS CAUSED BY CUSTOMER'S OR ANY THIRD PERSON'S MISUSE, NEGLIGENCE, IMPROPER INSTALLATION OR TESTING, UNAUTHORIZED ATTEMPTS TO REPAIR OR MODIFY, OR ANY OTHER CAUSE BEYOND THE RANGE OF THE INTENDED USE, OR BY ACCIDENT, FIRE, LIGHTNING, OR OTHER HAZARD.

LIMITATION OF LIABILITY: TO THE FULL EXTENT ALLOWED BY LAW TRENDNET ALSO EXCLUDES FOR ITSELF AND ITS SUPPLIERS ANY LIABILITY, WHETHER BASED IN CONTRACT OR TORT (INCLUDING NEGLIGENCE), FOR INCIDENTAL, CONSEQUENTIAL, INDIRECT, SPECIAL, OR PUNITIVE DAMAGES OF ANY KIND, OR FOR LOSS OF REVENUE OR PROFITS, LOSS OF BUSINESS, LOSS OF INFORMATION OR DATA, OR OTHER FINANCIAL LOSS ARISING OUT OF OR IN CONNECTION WITH THE SALE, INSTALLATION, MAINTENANCE, USE, PERFORMANCE, FAILURE, OR INTERRUPTION OF THE POSSIBILITY OF SUCH DAMAGES, AND LIMITS ITS LIABILITY TO REPAIR, REPLACEMENT, OR REFUND OF THE PURCHASE PRICE PAID, AT TRENDNET'S OPTION. THIS DISCLAIMER OF LIABILITY FOR DAMAGES WILL NOT BE AFFECTED IF ANY REMEDY PROVIDED HEREIN SHALL FAIL OF ITS ESSENTIAL PURPOSE.

Governing Law: This Limited Warranty shall be governed by the laws of the state of California.

Note: AC/DC Power Adapter, Cooling Fan, Power Supply, and Cables carry a 1-Year Warranty

## Certifications

This equipment has been tested and found to comply with FCC and CE Rules.

Operation is subject to the following two conditions:

- (1) This device may not cause harmful interference.
- (2) This device must accept any interference received. Including interference that may cause undesired operation.



Waste electrical and electronic products must not be disposed of with household waste. Please recycle where facilities exist. Check with you Local Authority or Retailer for recycling advice.



**NOTE:** THE MANUFACTURER IS NOT RESPONSIBLE FOR ANY RADIO OR TV INTERFERENCE CAUSED BY UNAUTHORIZED MODIFICATIONS TO THIS EQUIPMENT. SUCH MODIFICATIONS COULD VOID THE USER'S AUTHORITY TO OPERATE THE EQUIPMENT.

## ADVERTENCIA

En todos nuestros equipos se mencionan claramente las características del adaptador de alimentación necesario para su funcionamiento. El uso de un adaptador distinto al mencionado puede producir daños físicos y/o daños al equipo conectado. El adaptador de alimentación debe operar con voltaje y frecuencia de la energía eléctrica domiciliar existente en el país o zona de instalación.



## TRENDnet Technical Support

### US • Canada

**Toll Free Telephone:** 1(866) 845-3673

24/7 Tech Support



### Europe (Germany • France • Italy • Spain • Switzerland • UK)

**Toll Free Telephone:** +00800 60 76 76 67

English/Espanol - 24/7

Francais/Deutsch - 11 am-8pm, Monday - Friday MET

### Worldwide

**Telephone:** +(31) (0) 20 504 05 35

English/Espanol - 24/7

Francais/Deutsch - 11 am-8pm, Monday - Friday MET

## Product Warranty Registration

Please take a moment to register your product online.

Go to TRENDnet's website at <http://www.trendnet.com>

**TRENDnet**

20675 Manhattan Place

Torrance, CA 90501

USA