

TS-U100/ TS-U200

**2-port USB 2.0 Network Storage Server
USB 2.0 Network Storage Server with All-in-1 Memory Card Reader/Writer
Quick Installation Guide**

**Guide d'installation rapide du
Serveur de stockage réseau à 2 ports USB 2.0/
Serveur de stockage réseau USB 2.0 avec lecteur/
enregistreur de carte mémoire tout en un**

**USB-2.0-Netzwerkspeicherserver mit 2 Ports /
USB-2.0-Netzwerkspeicherserver mit Multispeicherkartenleser/-schreiber
Kurzanleitung zur Installation**

**Guía de instalación rápida del
Servidor de almacenamiento de red USB 2.0 de 2 puertos/
Servidor de almacenamiento de red USB 2.0 con lector/e
scritor de tarjeta de memoria todo en uno**

Version 03.30.05



TRENDnet[®]
TRENDAware, USA
What's Next in Networking

Table of Contents

Español	1
1. Preparación para la instalación	1
2. Detalles del producto	2
3. Instalación del hardware	4
4. Configuración del Servidor de Almacenamiento	5
5. Cómo acceder a los dispositivos de almacenamiento TS-U100/TS-U200	7
Troubleshooting	9

1. Preparación para la instalación

Verificación de los contenidos del paquete

Verifique que su caja contiene todo lo que incluimos en ella:



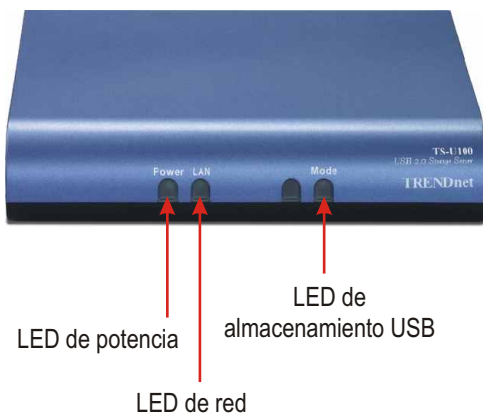
Requisitos mínimos del Hardware

1. Conmutador a 10/100 Mbps
2. Cable Cat 5 con conector RJ-45
3. Dispositivos de almacenamiento USB 2.0 (p.ej. disco duro, disco flash, lector de tarjeta de memoria, etc.)
4. Tarjeta de red instalada con protocolo de red TCP/IP
5. Windows XP, 2000, ME, 98SE

2. Detalles del producto

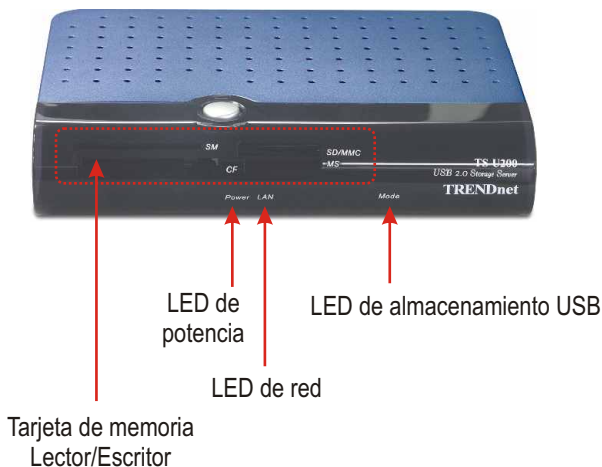
TS-U100

El servidor de almacenamiento de red USB 2.0 dispone de 3 LEDs para la indicación de potencia, actividad de red y dispositivos de almacenamiento.



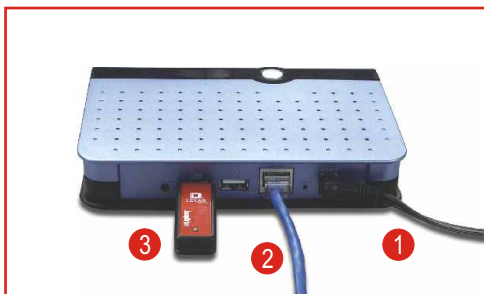
TS-U200

El servidor de almacenamiento de red USB 2.0 con lector/escritor de tarjeta de memoria todo en uno cuenta con 3 LEDs y 4 ranuras para dispositivos lector/escritor de tarjeta de memoria. Los LEDs indican la potencia, actividad de red y dispositivos de almacenamiento. Las ranuras de los dispositivos lector/escritor de tarjeta de memoria indican las ranuras SM, SD/MMC, CF y MS.



3. Instalación del hardware

1. Conecte el adaptador eléctrico al TS-U100/TS-U200.
2. Conecte el TS-U100/TS-U200 a su conmutador o PC a través de un cable CAT 5.
3. Conecte su dispositivo de almacenamiento USB 2.0 a la ranura USB.



4. (Sólo para TS-U200) introduzca la tarjeta SmartMedia, Memory Stick, SecureDigital o MultiMedia dentro de las ranuras para tarjeta de memoria con los conectores de cobre **hacia abajo**. Introduzca la tarjeta Compact Flash según la imagen que se muestra a continuación.



La instalación ha finalizado.

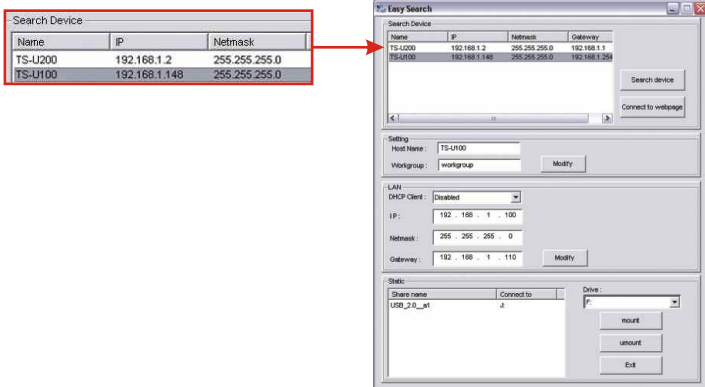
4. Configuración del Servidor de Almacenamiento

Para usuarios de Windows

1. Introduzca el CD-ROM de TS-U100/TS-U200 en la unidad de CD-ROM de su PC.
2. Haga clic en "Run Utility" (Ejecutar la herramienta)



3. Haga clic en **Search Device** (Dispositivo de búsqueda) y luego pulse TS-U100/TS-U200. Tome nota y escriba el nombre del TS-U100/TS-U200.



4. Cambie la dirección IP en la sección LAN y luego pulse **Modify** (Modificar). Tome nota y escriba el nombre de la dirección IP del TS-U100/TS-U200

LAN

DHCP Client : Disabled

IP : 192 . 168 . 1 . 100

Netmask : 255 . 255 . 255 . 0

Gateway : 192 . 168 . 1 . 110

. 110 Modify

Easy Search

Name	IP	Netmask	Gateway
TS-U100	192.168.1.100	255.255.255.0	192.168.1.110

Search device

Connect to webpage

Setting

Host Name : TS-U100

Workgroup : workgroup Modify

LAN

DHCP Client : Disabled

IP : 192 . 168 . 1 . 100

Netmask : 255 . 255 . 255 . 0

Gateway : 192 . 168 . 1 . 110 Modify

Share name Connect to Drive

USB_2_0_at	z:	F:
------------	----	----

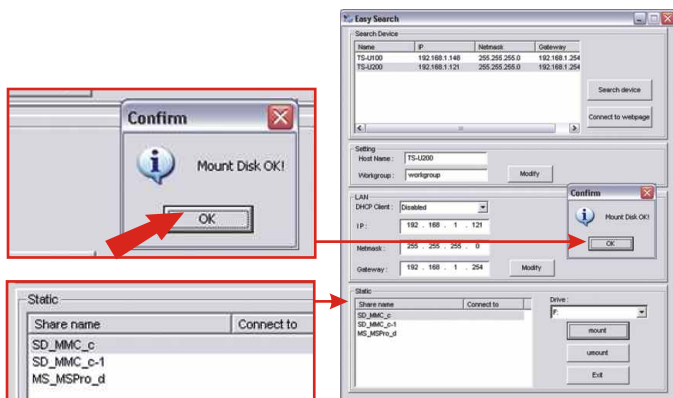
mount

unmount

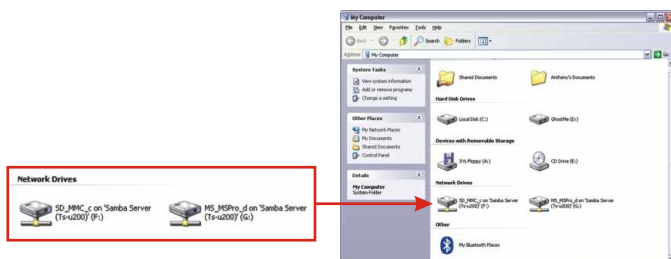
Exit

5. Cómo acceder a los dispositivos de almacenamiento TS-U100/TS-U200

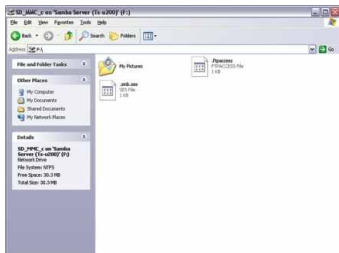
1. Vaya a la sección **Static** (Estático) y luego pulse el dispositivo de almacenamiento al que desee acceder. Haga clic en **Mount** (Montaje) y luego pulse **OK**. Repita este paso para añadir más de un dispositivo de almacenamiento.



2. Haga doble clic en **My Computer** (Mi PC) y luego haga doble clic sobre cualquier dispositivo de almacenamiento instalado en las **Network Drives** (Unidades de red).



3. Su dispositivo de almacenamiento está listo para usar.



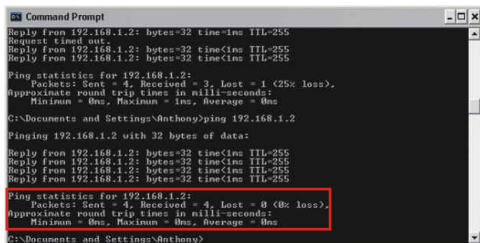
Troubleshooting

Q1: Can I connect or disconnect the USB storage device while the TS-U100/TS-U200 is on?

A1: Yes, you can connect or disconnect any external USB device while the computer is on, because the USB interfaces are Plug-and-Play and hot-pluggable. Please **DO NOT** disconnect any USB storage device while the MODE LED is red or when TS-U100/TS-U200 is saving a file into a USB storage device.

Q2: I typed in `http://192.168.1.2` in my web browser, but I do not see the login screen.

A2: Please make sure that the TS-U100/TS-U200 is properly connected to your switch or computer (See 3. Hardware Installation). Open a DOS Prompt window, type **ping 192.168.1.2**, and press Enter. Under **Ping statistics**, you should have 0% loss.



```
Command Prompt
Reply from 192.168.1.2: bytes=32 time=ms TTL=255
Request timed out.
Reply from 192.168.1.2: bytes=32 time<ms TTL=255
Reply from 192.168.1.2: bytes=32 time<ms TTL=255

Ping statistics for 192.168.1.2:
    Packets: Sent = 4, Received = 3, Lost = 1 (25% loss),
    Approximate round trip times in milli-seconds:
        Minimum = 0ms, Maximum = 1ms, Average = 0ms

C:\Documents and Settings\Anthony>ping 192.168.1.2

Pinging 192.168.1.2 with 32 bytes of data:

Reply from 192.168.1.2: bytes=32 time<ms TTL=255
Reply from 192.168.1.2: bytes=32 time<ms TTL=255
Reply from 192.168.1.2: bytes=32 time<ms TTL=255
Reply from 192.168.1.2: bytes=32 time<ms TTL=255

Ping statistics for 192.168.1.2:
    Packets: Sent = 4, Received = 4, Lost = 0 (0% loss),
    Approximate round trip times in milli-seconds:
        Minimum = 0ms, Maximum = 0ms, Average = 0ms

C:\Documents and Settings\Anthony>
```

Q3: I have verified that my TS-U100/TS-U200 is connected properly to a switch or computer, and I can access the login screen. However, when I try to type in the server name into my web browser, my browser says that it “cannot find server”. What do I do?

A3: Make sure that you are typing the server name correctly. Remember to type the server name with this format: `\\Server_Name`. As an alternative, you can also type `\\192.168.1.2` or the modified IP address that you assigned to the TS-U100/TS-U200. **DO NOT** type the server name in this format: `//Server_Name` and make sure that the server name is spelled correctly.

Q4: I made sure that I was typing the server name in the following format: \\Server_Name, but I get an error message. What do I do?

A4: Most homes use peer-to-peer networks, so devices such as a storage server may not be recognized immediately. Please allow 5-10 minutes before typing in \\Server_Name. If you still cannot find the TS-U100/TS-U200, then power cycle the TS-U100/TS-U200 by pulling out the power adapter connector and putting it back in. Now try typing in \\Server_Name.

Q5: I clicked “mount” in the utility but I get a “Mount Disk Fail” window. What do I do?

A5: In peer-to-peer networks, network devices such as storage servers are not recognized immediately. Please wait about 2-5 minutes before pressing the “mount” button again. If you still cannot mount a storage device, press the reset button at the back of the TS-U100/U200. Refer to the User’s Guide to reset the TS-U100/U200.

If you have any questions regarding the TS-U100/TS-U200 USB 2.0 Network Storage Server, please contact Trendware Technical Support Department.

Certifications

This equipment has been tested and found to comply with FCC and CE Rules. Operation is subject to the following two conditions:

- (1) This device may not cause harmful interference.
- (2) This device must accept any interference received.
Including interference that may cause undesired operation.





What's Next in Networking

Product Warranty Registration

Please take a moment to register your product online.
Go to TRENDware's website at <http://www.TRENDNET.com>

TRENDnet Technical Support

US/Canada Support Center

Contact

Telephone: 1(310) 626-6252

Fax: 1(310) 626-6267

Email: support@trendnet.com

Tech Support Hours

7:30am - 6:00pm Pacific Standard Time

Monday - Friday

European Support Center

Contact**Telephone**

Deutsch : +49 (0) 6331 / 268-460

Français : +49 (0) 6331 / 268-461

Español : +49 (0) 6331 / 268-462

English : +49 (0) 6331 / 268-463

Italiano : +49 (0) 6331 / 268-464

Dutch : +49 (0) 6331 / 268-465

Fax: +49 (0) 6331 / 268-466

Tech Support Hours

8:00am - 6:00pm Middle European Time

Monday - Friday

TRENDware International, Inc.

3135 Kashiwa Street. Torrance, CA 90505

<http://www.TRENDNET.com>