

# TS-U100/ TS-U200

2-port USB 2.0 Network Storage Server  
USB 2.0 Network Storage Server with All-in-1 Memory Card Reader/Writer  
Quick Installation Guide

Guide d'installation rapide du  
Serveur de stockage réseau à 2 ports USB 2.0/  
Serveur de stockage réseau USB 2.0 avec lecteur/  
enregistreur de carte mémoire tout en un

USB-2.0-Netzwerkspeicherserver mit 2 Ports /  
USB-2.0-Netzwerkspeicherserver mit Multispeicherkartenleser/-schreiber  
Kurzanleitung zur Installation

Guía de instalación rápida del  
Servidor de almacenamiento de red USB 2.0 de 2 puertos/  
Servidor de almacenamiento de red USB 2.0 con lector/e  
scritor de tarjeta de memoria todo en uno

Version 03.30.05



**TRENDnet**<sup>®</sup>  
TRENDware, USA  
**What's Next in Networking**

# Table of Contents

English .....	1
1. Prepare for Installation .....	1
2. Product Detail .....	2
3. Hardware Installation .....	4
4. Storage Server Setup .....	5
5. Accessing Storage Devices on TS-U100/TS-U200 .....	7
Troubleshooting .....	9

# English QIG

## 1. Prepare for Installation

Thank you for purchasing TRENDnet's TS-U100/TS-U200 2-port USB 2.0 Network Storage Server /USB 2.0 Network Storage Server with All-in-1 Memory Card Reader/Writer

This guide will help you set up your USB 2.0 Network Storage Server. Following the installation instructions should be quick and easy, but if you run into any problems, please refer to the Troubleshooting section. If you need further assistance, please visit [www.TRENDNET.com](http://www.TRENDNET.com) or call technical support by phone.

### Verify Package Contents

Please make sure you have everything in the box:



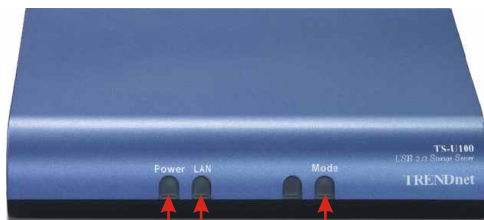
### Minimum System Requirements

1. 10/100 Mbps switch
2. Cat 5 cable with RJ-45 connector
3. USB 2.0 storage devices (i.e. hard drive, flash drive, memory card reader, etc.)
4. Installed Network Card using TCP/IP networking protocol
5. Windows XP, 2000, ME, 98SE

## 2. Product Detail

### TS-U100

The USB 2.0 Network Storage Server has 3 LEDs that indicate power, network activity, and storage devices.



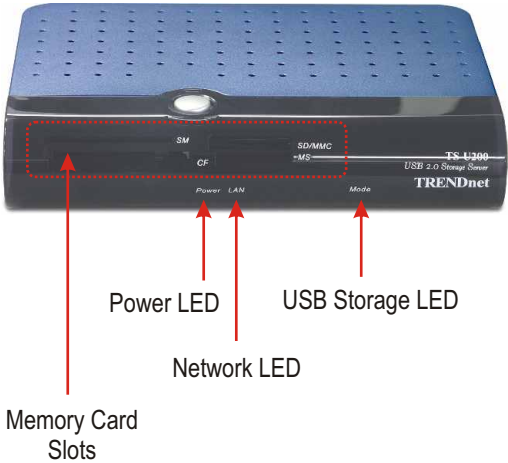
Power LED

Network LED

USB Storage LED

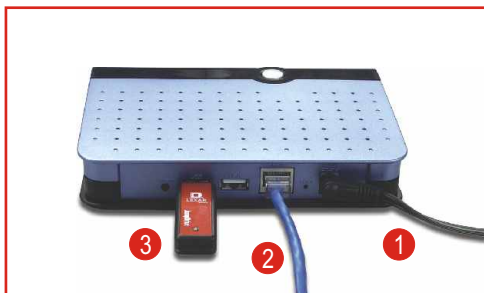
# TS-U200

The USB 2.0 Network Storage Server with All-in-1 Memory Card Reader/Writer has 3 LEDs and 4 Memory Card Reader/Writer slots. The LEDs indicate power, network activity, and storage devices. The Memory Card Reader/Writer slots indicate SM, SD/MMC, CF and MS slots.



### 3. Hardware Installation

1. Connect the power adapter to the TS-U100/TS-U200.
2. Connect the TS-U100/TS-U200 to your switch or computer by using a CAT 5 cable.
3. Connect your USB 2.0 Storage Device into a USB slot.



4. (For TS-U200 Only) Insert SmartMedia, Memory Stick, SecureDigital or MultiMedia Card into the memory card slots with the copper connectors face down. Insert Compact Flash Card as shown.



Your installation is now complete.

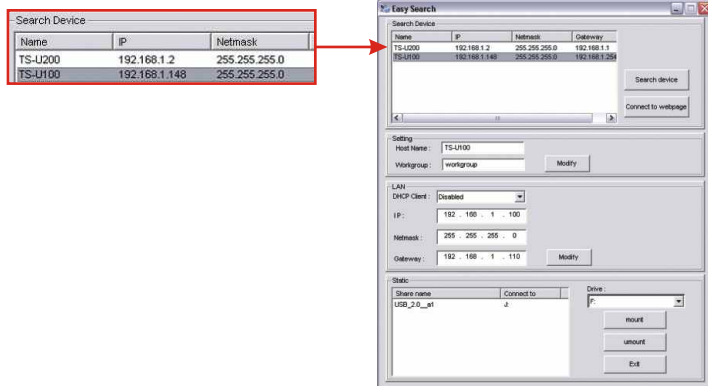
# 4. Storage Server Setup

## For Windows Users

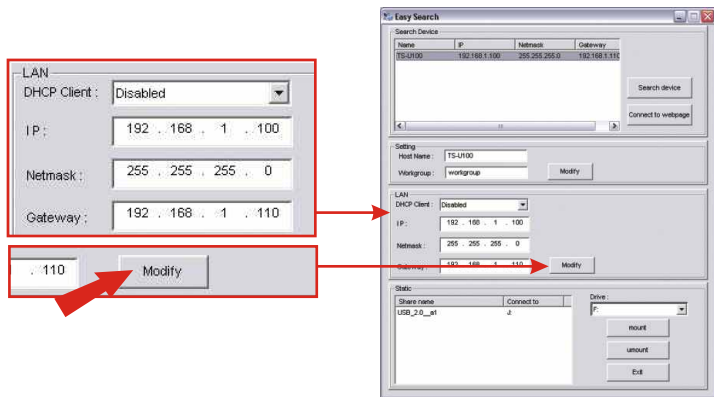
1. Insert the TS-U100/TS-U200 CD-ROM into your computer's CD-ROM drive.
2. Click "Run Utility"



3. Click **Search Device** and Click TS-U100/TS-U200. Take note and write down the name of the TS-U100/TS-U200.



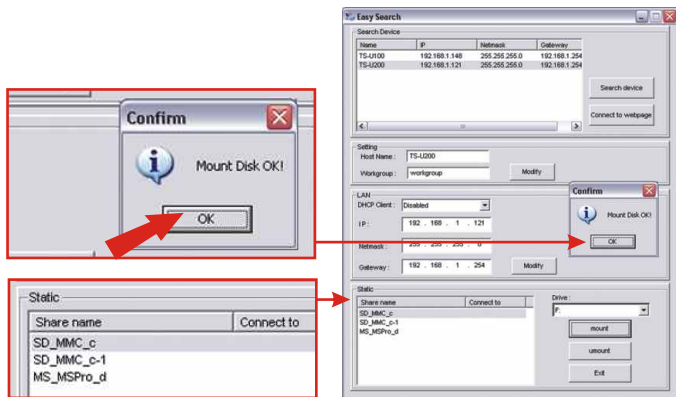
4. Change the IP address in the LAN section and Click **Modify**. Take note and write down the IP address of TS-U100/TS-U200.



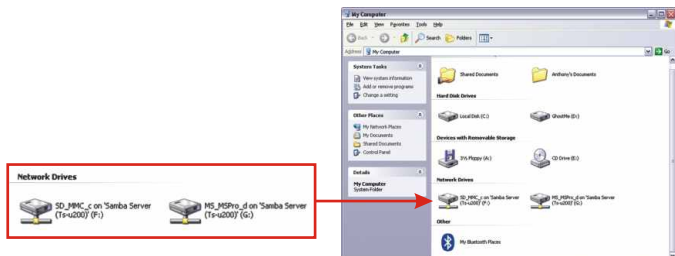


# 5. Accessing Storage Devices on TS-U100/TS-U200

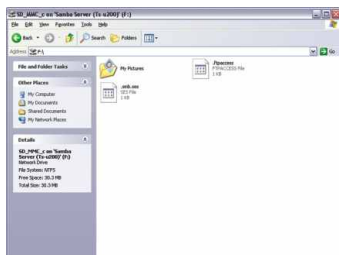
1. Go to the **Static** section and click the storage device you want to access. Click **Mount** and click **OK**. Repeat this step to add more than one storage device.



2. Double click **My Computer** and double click on any mounted storage device in **Network Drives**.



### 3. Your storage device is ready for access.



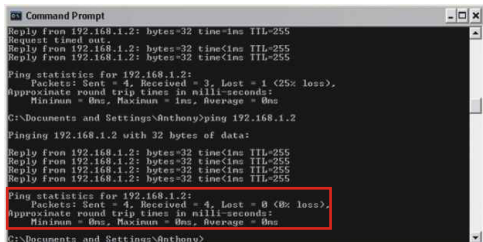
# Troubleshooting

**Q1:** Can I connect or disconnect the USB storage device while the TS-U100/TS-U200 is on?

**A1:** Yes, you can connect or disconnect any external USB device while the computer is on, because the USB interfaces are Plug-and-Play and hot-pluggable. Please DO NOT disconnect any USB storage device while the MODE LED is red or when TS-U100/TS-U200 is saving a file into a USB storage device.

**Q2:** I typed in `http://192.168.1.2` in my web browser, but I do not see the login screen.

**A2:** Please make sure that the TS-U100/TS-U200 is properly connected to your switch or computer (See 3. Hardware Installation). Open a DOS Prompt window, type **ping 192.168.1.2**, and press Enter. Under **Ping statistics**, you should have 0% loss.



```
Command Prompt
Reply from 192.168.1.2: bytes=32 time=1ms TTL=255
Request timed out.
Reply from 192.168.1.2: bytes=32 time<ms TTL=255
Reply from 192.168.1.2: bytes=32 time<ms TTL=255

Ping statistics for 192.168.1.2:
    Packets: Sent = 4, Received = 3, Lost = 1 (25% loss),
    Approximate round trip times in milli-seconds:
        Minimum = 0ms, Maximum = 1ms, Average = 0ms

C:\Documents and Settings\Anthony>ping 192.168.1.2

Pinging 192.168.1.2 with 32 bytes of data:
Reply from 192.168.1.2: bytes=32 time<ms TTL=255
Reply from 192.168.1.2: bytes=32 time<ms TTL=255
Reply from 192.168.1.2: bytes=32 time<ms TTL=255
Reply from 192.168.1.2: bytes=32 time<ms TTL=255

Ping statistics for 192.168.1.2:
    Packets: Sent = 4, Received = 4, Lost = 0 (0% loss),
    Approximate round trip times in milli-seconds:
        Minimum = 0ms, Maximum = 0ms, Average = 0ms

C:\Documents and Settings\Anthony>
```

**Q3:** I have verified that my TS-U100/TS-U200 is connected properly to a switch or computer, and I can access the login screen. However, when I try to type in the server name into my web browser, my browser says that it “cannot find server”. What do I do?

**A3:** Make sure that you are typing the server name correctly. Remember to type the server name with this format: `\\Server_Name`. As an alternative, you can also type `\\192.168.1.2` or the modified IP address that you assigned to the TS-U100/TS-U200. DO NOT type the server name in this format: `//Server_Name` and make sure that the server name is spelled correctly.

**Q4: I made sure that I was typing the server name in the following format: \\Server\_Name, but I get an error message. What do I do?**

**A4:** Most homes use peer-to-peer networks, so devices such as a storage server may not be recognized immediately. Please allow 5-10 minutes before typing in \\Server\_Name. If you still cannot find the TS-U100/TS-U200, then power cycle the TS-U100/TS-U200 by pulling out the power adapter connector and putting it back in. Now try typing in \\Server\_Name.

**Q5: I clicked “mount” in the utility but I get a “Mount Disk Fail” window. What do I do?**

**A5:** In peer-to-peer networks, network devices such as storage servers are not recognized immediately. Please wait about 2-5 minutes before pressing the “mount” button again. If you still cannot mount a storage device, press the reset button at the back of the TS-U100/U200. Refer to the User's Guide to reset the TS-U100/U200.

If you have any questions regarding the TS-U100/TS-U200 USB 2.0 Network Storage Server, please contact Trendware Technical Support Department.

### **Certifications**

This equipment has been tested and found to comply with FCC and CE Rules. Operation is subject to the following two conditions:

- (1) This device may not cause harmful interference.
- (2) This device must accept any interference received.  
Including interference that may cause undesired operation.





TRENDware, USA

**What's Next in Networking**

## Product Warranty Registration

Please take a moment to register your product online.  
Go to TRENDware's website at <http://www.TRENDNET.com>

### TRENDnet Technical Support

#### US/Canada Support Center

**Contact**

**Telephone:** 1(310) 626-6252

**Fax:** 1(310) 626-6267

**Email:** [support@trendnet.com](mailto:support@trendnet.com)

**Tech Support Hours**

7:30am - 6:00pm Pacific Standard Time

Monday - Friday

#### European Support Center

**Contact****Telephone**

Deutsch : +49 (0) 6331 / 268-460

Français : +49 (0) 6331 / 268-461

Español : +49 (0) 6331 / 268-462

English : +49 (0) 6331 / 268-463

Italiano : +49 (0) 6331 / 268-464

Dutch : +49 (0) 6331 / 268-465

**Fax:** +49 (0) 6331 / 268-466

**Tech Support Hours**

8:00am - 6:00pm Middle European Time

Monday - Friday

**TRENDware International, Inc.**

3135 Kashiwa Street. Torrance, CA 90505

**<http://www.TRENDNET.com>**