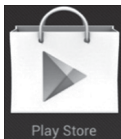


### Installation

1



Tap on the **Play Store** icon to download and install TRENDnetVIEW app. Once installed tap the TRENDnetVIEW icon to open up the app.

**Note:** Android OS must be version 2.3 or higher.

### Remote Camera Setup

**Note:** It is recommended that you setup a dynamic DNS service in order to view your cameras remotely. See your router and IP camera's user's guide for instructions.

1



- Tap the **Manually Add Camera** icon at the upper right corner of the screen.

2



- Enter the camera's Name, Host Name, remote IP address (e.g. 65.65.65.65) or Dynamic DNS address, Port number, and Username and Password. Tap the **Save** icon to finish.

3



- After the selected camera has been added, TRENDnetVIEW will return to the Camera List screen. Repeat steps 2-3 to add more cameras.

### View Video

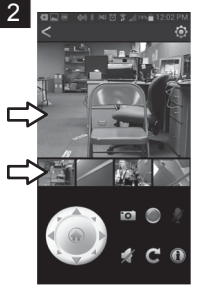
**Note:** It is recommended that you setup a dynamic DNS service in order to view your cameras remotely. See your router and IP camera's user's guide for instructions.

**1**




- Check the desired cameras. Tap the **Select All** icon at the bottom left corner to select all cameras. Tap the **Connect** icon at the bottom right corner to view video.

**2**




- Swipe the video pane to view other cameras. Swipe the thumbnail pane to see thumbnail view of all cameras.

**3**




- Rotate the Android phone horizontally to view the video in landscape mode.

**4**



- Pinch the screen to zoom in and zoom out.

**5**



- In landscape mode, tap the screen to bring up the function toolbar.

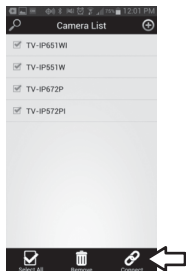
**6**



- Above is the function toolbar. Buttons include: pan and tilt, snapshot, enable/disable microphone, enable/disable speaker, refresh and information. If the button is greyed out, the IP camera does not support that function.

### Change Video Aspect Ratio

1



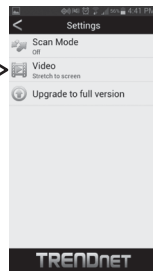
- Tap the **Connect** icon at the bottom right corner to view video.

2



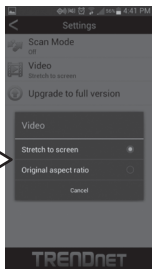
- Tap the **Settings** icon at the upper right corner of the screen. Then tap **Settings**.

3



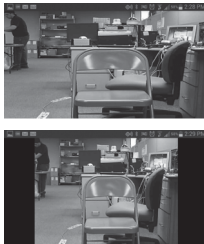
- Tap **Video** to change the aspect ratio.

4



- Select **Stretch to screen** or **Original aspect ratio**.

5




- The top image illustrates the stretch to screen option. The bottom image illustrates original aspect ratio option.

### In-app Upgrade

**Note: The In-app Upgrade unlocks the following features:**

- Recording to mobile device
- Split Screen
- Quad View
- Auto Scan

**1**



• Tap the **Settings** icon at the upper right corner of the screen. Then tap **Settings**.

**2**



• Tap **Upgrade to full version**.

**3**



• Tap **Upgrade**.

### Split Screen and Quad View (In-app Upgrade Required)

1



- Double tap the video.

2



- In portrait mode, you can view up to 2 cameras at a time. Swipe to the left to view more cameras.

3

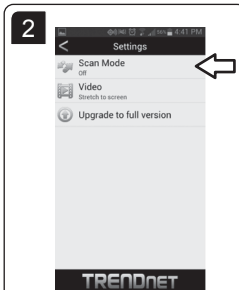


- Rotate the camera horizontally to view video in landscape mode. In landscape mode, up to 4 cameras can be viewed at once. Swipe to the left to view more cameras.

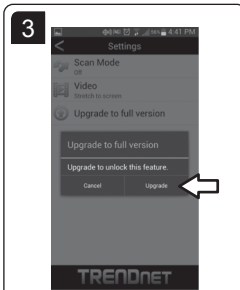
### Scan Mode (In-app Upgrade Required)



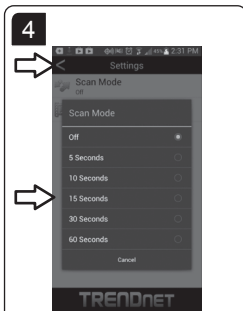
- Tap the **Settings** icon at the upper right corner of the screen. Then tap **Settings**.



- Tap **Scan Mode**.



- If you have not yet purchased the full version, please tap **Upgrade**.



- Select the desired option and then tap the **Back** button.

### Recording (In-app Upgrade Required)

**1**

• Tap the **Connect** icon at the bottom right hand corner to view video.

**2**

• Swipe the video pane to select the desired camera and then click the **Record** button.

**3**

• If you have not yet purchased the full version, please tap **Upgrade**.

**4**

• **REC** (blinking red) indicates that video is being recorded. Tap the **Record** button to stop the recording.


**5**

• Tap your file manager application.

**6**


• Tap the **TRENDnetVIEW** folder.

**7**



• Tap the desired video.

**8**



• Video will start playing.

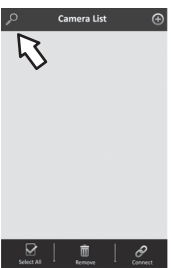


## Local Camera Setup

**Note:**

- Before proceeding, you must establish a wireless connection to the network where your IP cameras are installed.
- This method will not allow you to see video while away from your local network. Remote camera setup is recommended.

**1**




Camera List

Select All Remove Connect

- Tap the **Scan Camera** icon at the upper left corner of the screen.

**2**



Scan Camera

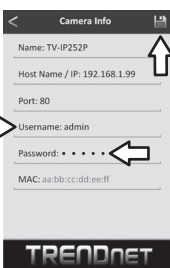
TV-IP252P

TV-IP672W

TRENDnet

- Tap the **Add Camera** icon next to the cameras you want to add.

**3**



Camera Info

Name: TV-IP252P

Host Name / IP: 192.168.1.99

Port: 80

Username: admin

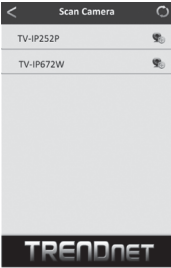
Password: •••••

MAC: aa:bb:cc:dd:ee:ff

TRENDnet

- Enter the camera's Username and Password and then tap the **Save** icon.

**4**



Scan Camera

TV-IP252P

TV-IP672W

TRENDnet

- After the selected camera has been added, TRENDnetVIEW will return to the Scan Camera screen. Repeat steps 2-3 to add more cameras.

**Technical Support**

If you have any questions regarding the product installation, please contact our Technical Support.

Toll free US/Canada: 1-866-845-3673

<http://www.trendnet.com/support/>

**TRENDnet**

20675 Manhattan Place, Torrance, CA 90501. USA

Copyright © 2013. All Rights Reserved. TRENDnet.