



Quick Installation Guide



TPL-202E
TPL-202E2K
H/W: V1.1R

Table of Contents

Español	1
1. Antes de iniciar	1
2. Cómo se instala	2
Troubleshooting	6

1. Antes de iniciar



Contenidos del paquete

- TPL-202E
- CD-ROM de la herramienta
- Guía de instalación rápida
- Cable 1.8m

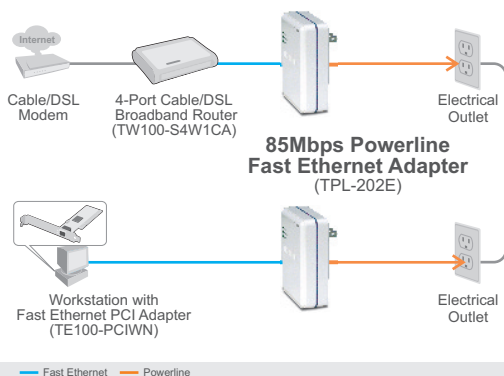
Requisitos del sistema

- Unidad de CD-ROM
- Un PC portátil o de escritorio con adaptador de red instalado
- CPU: 300MHz o superior / 800MHz o superior (Windows Vista)
- Memoria: 256MB RAM o más / 512MB RAM o más (Windows Vista)
- Una red por cable a 10/100Mbps si utiliza el TPL-202E como dispositivo puente

Requisitos del software

- Windows 98SE/ME/2000/XP/Vista

Aplicación



2. Cómo se instala

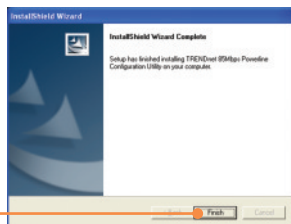
¡Importante! NO instale el TPL-202E hasta que no se le indique.

Para usuarios de Windows

1. Introduzca el **CD-ROM de la herramienta** en la unidad de CD-ROM de su PC y luego haga clic en **Install Utility** (Instalar herramienta).



2. Siga las instrucciones del **InstallShield Wizard** (asistente de InstallShield) y luego haga clic en **Finish** (Finalizar).



3. Copiar abajo de la contraseña del dispositivo de 12 dígitos para cada TPL-202E.



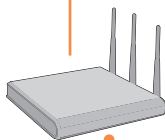
Nota:

1. NO conecte el TPL-202E a un regulador de voltaje o regleta.
2. Para que los TPL-202E puedan verse mutuamente, cada unidad debe estar en el mismo interruptor de circuito.
3. Se pueden conectar en red un máximo de 16 TPL-202E.

4. Tapar un TPL-202E en un enchufe de energía disponible.



5. Conecte un cable Ethernet del TPL-202E a un puerto LAN disponible en su enrutador (Ej. TEW-633GR).



6. Después conecte un cable Ethernet desde un puerto LAN disponible en su enrutador a su PC.



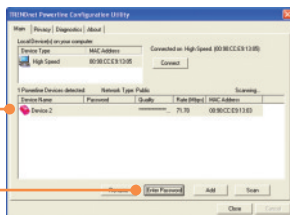
7. Enchufe el segundo TPL-202E a una toma de corriente en donde esté ubicado su PC o dispositivo de red.



8. Haga doble clic en **TRENDnet Powerline AV Utility** (Herramienta Powerline AV de TRENDnet) en su escritorio.



9. Seleccionar el TPL-202E alejado y el teclado incorpora contraseña.



Nota: El TPL-202E remoto es el TPL-202E que está conectado a su PC o dispositivo de red remoto.

10. Incorporar la contraseña alejada del dígito de TPL-202E 12 y chascar la AUTORIZACIÓN. Ver el paso 3 para encontrar la contraseña alejada de TPL-202E.



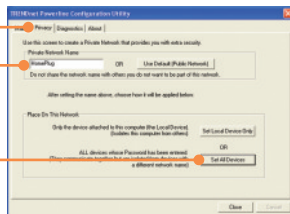
11. Clic en OK.



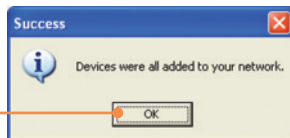
12. Repita los pasos 8-10 para el segundo TPL-202E.

Nota: El nombre de red del defecto es **HomePlug**. Si el nombre de red de tu red existente de la línea eléctrica no es **HomePlug**, debes cambiar esto en la utilidad.

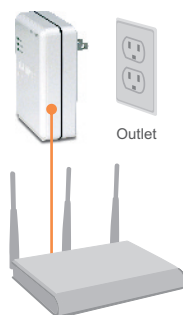
13. Chascar la aislamiento cuadro. Si quiere cambiar el **Nombre de la Red Privada**, introduzca el nombre deseado de la red privada y luego haga clic en **Set All Devices** (Ajustar todos los dispositivos).



14. Clic en **OK**.



15. Conecte un cable CAT-5 del TPL-202E a su PC remoto, o aplicación del netbook.



Su configuración inalámbrica ha finalizado.

Para más información sobre la configuración del TPL-202E y de las configuraciones avanzadas, por favor consulte la Guía del Usuario que se incluye en el CD-ROM de la herramienta o en el sitio Web de TRENDnet en www.trendnet.com

Q1: I inserted the TPL-202E CD-ROM into my computer's CD-ROM Drive and the installation menu does not appear automatically. What should I do?

A1: If the installation menu does not appear automatically, click Start, click Run, and type D:\Autorun.exe where "D" in "D:\Autorun.exe" is the letter assigned to your computer's CD-ROM Drive. And then click OK to start the installation.

Q2: I have verified that my Powerline device is connected to my workstation, but I cannot detect other Powerline devices. What should I do?

A2: First, verify that you are using Cat-5 Ethernet cables. Second, open up the Powerline AV Utility and click scan. Third, verify the network name of your Powerline network. Then click on the security link in the TRENDnet Powerline Utility, type in the network name and click **Save changes**. Fourth, verify that the power outlet the TPL-202E is plugged into is on the same electrical power distribution and/or circuit breaker.

Q3: I can detect my Powerline devices on my Powerline network, but I cannot connect to the Internet. What should I do?

A3: First, make sure you are not connecting the device into a power strip or surge protector. Second, make sure that your Router is connected to the internet. Third, verify that the TCP/IP settings are set to **Obtain an IP address automatically**.

1. Go into the **Control Panel** and double-click the **Network Connections** icon, and then right-click the **Local Area Connection** icon and then click **Properties**.



2. Click **Internet Protocol (TCP/IP)** and then click **Properties**. Click on **Obtain an IP automatically** and then click **OK**.

Q4: I tried changing the Private Network Name and applying it to all of my TPL-202E devices, but “Some devices could not be added to your network” error appears. I can no longer see any of the remote TPL-202Es. What should I do?

A4: First, open up the TRENDnet Powerline Utility, click the **Privacy** tab, click **Use Default (Public Network)** and then click **Set Local Device Only**. Second, make sure to add each remote TPL-202E's password. See step 9 in Section 2 (How to Install).

Q5: I have a HomePlug 1.0 or HomePlug turbo network. Can I use this with my network?

A5: The TPL-202E is backwards compatible with HomePlug 1.0 or HomePlug turbo.

If you still encounter problems or have any questions regarding the TPL-202E, please refer to the User's Guide included on the Utility CD-ROM or contact TRENDnet's Technical Support Department.

Limited Warranty

TRENDnet warrants its products against defects in material and workmanship, under normal use and service, for the following lengths of time from the date of purchase.

TPL-202E - 3-Year Warranty

If a product does not operate as warranted above during the applicable warranty period, TRENDnet shall, at its option and expense, repair the defective product or deliver to customer an equivalent product to replace the defective item. All products that are replaced will become the property of TRENDnet. Replacement products may be new or reconditioned.

TRENDnet shall not be responsible for any software, firmware, information, or memory data of customer contained in, stored on, or integrated with any products returned to TRENDnet pursuant to any warranty.

There are no user serviceable parts inside the product. Do not remove or attempt to service the product through any unauthorized service center. This warranty is voided if (i) the product has been modified or repaired by any unauthorized service center, (ii) the product was subject to accident, abuse, or improper use (iii) the product was subject to conditions more severe than those specified in the manual.

Warranty service may be obtained by contacting TRENDnet office within the applicable warranty period for a Return Material Authorization (RMA) number, accompanied by a copy of the dated proof of the purchase. Products returned to TRENDnet must be pre-authorized by TRENDnet with RMA number marked on the outside of the package, and

WARRANTIES EXCLUSIVE: IF THE TRENDNET PRODUCT DOES NOT OPERATE AS WARRANTED ABOVE, THE CUSTOMER'S SOLE REMEDY SHALL BE, AT TRENDNET'S OPTION, REPAIR OR REPLACEMENT. THE FOREGOING WARRANTIES AND REMEDIES ARE EXCLUSIVE AND ARE IN LIEU OF ALL OTHER WARRANTIES, EXPRESSED OR IMPLIED, EITHER IN FACT OR BY OPERATION OF LAW, STATUTORY OR OTHERWISE, INCLUDING WARRANTIES OF MERCHANTABILITY AND FITNESS FOR A PARTICULAR PURPOSE. TRENDNET NEITHER ASSUMES NOR AUTHORIZES ANY OTHER PERSON TO ASSUME FOR IT ANY OTHER LIABILITY IN CONNECTION WITH THE SALE, INSTALLATION, MAINTENANCE OR USE OF TRENDNET'S PRODUCTS.

TRENDNET SHALL NOT BE LIABLE UNDER THIS WARRANTY IF ITS TESTING AND EXAMINATION DISCLOSE THAT THE ALLEGED DEFECT IN THE PRODUCT DOES NOT EXIST OR WAS CAUSED BY CUSTOMER'S OR ANY THIRD PERSON'S MISUSE, NEGLIGENCE, IMPROPER INSTALLATION OR TESTING, UNAUTHORIZED ATTEMPTS TO REPAIR OR MODIFY, OR ANY OTHER CAUSE BEYOND THE RANGE OF THE INTENDED USE, OR BY ACCIDENT, FIRE, LIGHTNING, OR OTHER HAZARD.

LIMITATION OF LIABILITY: TO THE FULL EXTENT ALLOWED BY LAW TRENDNET ALSO EXCLUDES FOR ITSELF AND ITS SUPPLIERS ANY LIABILITY, WHETHER BASED IN CONTRACT OR TORT (INCLUDING NEGLIGENCE), FOR INCIDENTAL, CONSEQUENTIAL, INDIRECT, SPECIAL, OR PUNITIVE DAMAGES OF ANY KIND, OR FOR LOSS OF REVENUE OR PROFITS, LOSS OF BUSINESS, LOSS OF INFORMATION OR DATA, OR OTHER FINANCIAL LOSS ARISING OUT OF OR IN CONNECTION WITH THE SALE, INSTALLATION, MAINTENANCE, USE, PERFORMANCE, FAILURE, OR INTERRUPTION OF THE POSSIBILITY OF SUCH DAMAGES, AND LIMITS ITS LIABILITY TO REPAIR, REPLACEMENT, OR REFUND OF THE PURCHASE PRICE PAID, AT TRENDNET'S OPTION. THIS DISCLAIMER OF LIABILITY FOR DAMAGES WILL NOT BE AFFECTED IF ANY REMEDY PROVIDED HEREIN SHALL FAIL OF ITS ESSENTIAL PURPOSE.

Governing Law: This Limited Warranty shall be governed by the laws of the state of California.

Note: AC/DC Power Adapter, Cooling Fan, Power Supply, and Cables carry a 1-Year

Certifications

This equipment has been tested and found to comply with FCC and CE Rules.

Operation is subject to the following two conditions:

- (1) This device may not cause harmful interference.
- (2) This device must accept any interference received. Including interference that may cause undesired operation.



Waste electrical and electronic products must not be disposed of with household waste. Please recycle where facilities exist. Check with you Local Authority or Retailer for recycling advice.



NOTE: THE MANUFACTURER IS NOT RESPONSIBLE FOR ANY RADIO OR TV INTERFERENCE CAUSED BY UNAUTHORIZED MODIFICATIONS TO THIS EQUIPMENT. SUCH MODIFICATIONS COULD VOID THE USER'S AUTHORITY TO OPERATE THE EQUIPMENT.

ADVERTENCIA

En todos nuestros equipos se mencionan claramente las características del adaptador de alimentación necesario para su funcionamiento. El uso de un adaptador distinto al mencionado puede producir daños físicos y/o daños al equipo conectado. El adaptador de alimentación debe operar con voltaje y frecuencia de la energía eléctrica domiciliar existente en el país o zona de instalación.



Customer Support

Visit www.trendnet.com/support

Email:

support@trendnet.com



Europe (Germany • France • Italy • Spain • Switzerland • UK)

Toll Free Telephone: +00800 60 76 76 67

English/Espanol - 24/7

Worldwide

Telephone: +(31) (0) 20 504 05 35

English/Espanol - 24/7

Product Warranty Registration

Please take a moment to register your product online.

Go to TRENDnet's website at <http://www.trendnet.com/register>

TRENDnet

20675 Manhattan Place
Torrance, CA 90501
USA