



TPL-111BR 125Mbps 802.11g Wireless Powerline Router

The Wireless Powerline Router removes additional costs in network cabling by using existing power lines in your home or small office to network several wireless workstations. Secure file sharing, an Internet connection, or other network resources by using 56-bit DES for 14Mbps power line transmission and WPA security for 125Mbps wireless transmission.

FEATURES

- Up to 14Mbps High-Speed Data Transfer Rate over Powerlines
- Wi-Fi Compliant with 802.11b/g Standards
- Up to 125Mbps High Speed over Wireless Connection (Afterburner Technology) (in Access Point Mode only)
- Up to 14Mbps High-Speed Data Transfer Rate over Powerlines
- Built-in 4 x 10/100Mbps Auto-MDIX LAN Ports
- Built-in 1 x 10/100Mbps Auto-MDIX WAN Port (Internet)
- Supports Cable/DSL Modems with Dynamic IP, Static IP, PPPoE, or PPTP Connection Types
- Supports Access Point and Wireless Distribution System (WDS) Bridge/Repeater Modes
- Dynamic Data Rate Scaling at 54, 48, 36, 24, 18, 12, 9 and 6Mbps for 802.11g
- Dynamic Data Rate Scaling at 11, 5.5, 2 and 1Mbps for 802.11b
- Supports ESSID Enable/Disable Feature, AP Isolation and LAN MAC Address Filtering
- Supports 64/128-bit Wired Equivalent Privacy (WEP) , WPA and WPA-PSK
- Supports Static and Dynamic Routing
- Compliant with Windows 95/98/NT/2000/XP/2003 Server, Linux and Mac OS
- Powerline Range of up to 300 meters (depends on the environment) and up to 12 clients support
- Wireless Range of 30 ~ 100 meters Indoor (depends on the environment)
- Wireless Range of 50 ~ 300 meters Outdoor (depends on the environment)
- Connect to a Network using exiting Power Lines with Wall-Plugged Design
- 3-Year Warranty



POWERLINE

TPL-111BR

125Mbps 802.11g Wireless Powerline Router

SPECIFICATIONS

Hardware

Standards	<ul style="list-style-type: none"> • IEEE 802.11b (11Mbps), IEEE 802.11g (54Mbps) • IEEE 802.1x, HomePlug Powerline Alliance Industry Specifications V1.0 	<ul style="list-style-type: none"> • Wired: IEEE 802.3, IEEE 802.3u
LED Indicators	<ul style="list-style-type: none"> • Power, WLAN_TX/RX, LAN, WAN, HOMEPLUG(Activity/Collision) 	
Network Protocols	<ul style="list-style-type: none"> • TCP/IP, IPX, UDP, DHCP Client, DHCP Server 	
Power Source	<ul style="list-style-type: none"> • Input: AC 120V, 0.1A, 50/60Hz 	
Dimensions (LxWxH)	<ul style="list-style-type: none"> • 198 x 160 x 33 mm (7.8 x 6.3 x 1.2inches) 	
Weight	<ul style="list-style-type: none"> • 0.7kg (1.54 lbs) 	
Temperature	<ul style="list-style-type: none"> • Operating: 0°~ 40°C (32°F~ 104°F) 	<ul style="list-style-type: none"> • Storage: -20°~ 65°C (-4°F~ 149°F)
Humidity	<ul style="list-style-type: none"> • Operating: 10% ~ 85% 	<ul style="list-style-type: none"> • Storage: 5% ~ 90%
Certification	<ul style="list-style-type: none"> • FCC, CE 	

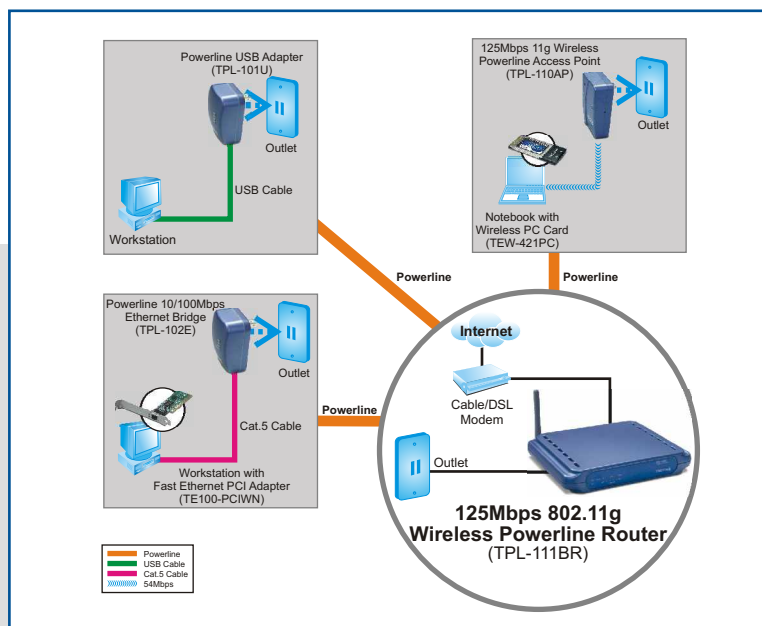
Powerline

Data Rate	<ul style="list-style-type: none"> • Up to 14Mbps Transfer Rate
Nodes	<ul style="list-style-type: none"> • Support up to 12 nodes per Network
Security	<ul style="list-style-type: none"> • 56-bit DES Encryption

Wireless

Module Technique	<ul style="list-style-type: none"> • 802.11b: DSSS • 802.11g: OFDM
Frequency Range	<ul style="list-style-type: none"> • 2.4 ~ 2.4835 GHz
Antenna	<ul style="list-style-type: none"> • 1 x Attached 2dBi Antenna
Data Rate (auto fallback)	<ul style="list-style-type: none"> • 802.11b: 11Mbps, 5.5Mbps, 2Mbps, and 1Mbps • 802.11g: 54Mbps, 48Mbps, 36Mbps, 24Mbps, 18Mbps, 12Mbps, 9Mbps and 6Mbps • High Speed-G: 125Mbps (Afterburner technology, Enhanced Throughput by up to 40%)
Security	<ul style="list-style-type: none"> • 64/128-bit WEP • WPA and WPA-PSK (TKIP, AES, TIV+AES) • 802.1x (Port-based Security with RADIUS)
Transmit Power	<ul style="list-style-type: none"> • 13.5 ±1.5dBm (typical)
Receiving Sensitivity (802.11a/b/g)	<ul style="list-style-type: none"> • 11Mbps 10 5 BER @ -80 dBm • 54Mbps 10 5 BER @ -65 dBm
Channels	<ul style="list-style-type: none"> • Universal Domain Support (Channel 1~14)

NETWORKING SOLUTIONS



PACKAGE CONTENTS

- TPL-111BR
- Quick Installation Guide
- Utility CD-ROM
- Cat.5 Cable (1.5m/5ft)

RELATED PRODUCTS

- TPL-101U** • 125Mbps 802.11g Wireless Powerline Access Point
- TPL-102E** • Powerline 10/100Mbps Ethernet Bridge
- TPL-110AP** • 125Mbps 802.11g Wireless Powerline Router

ORDERING INFORMATION

TRENDware International, Inc.
 3135 Kashiwa Street, Torrance, CA. 90505. USA
 Tel: 310-891-1100
 Fax: 310-891-1111
 Web: www.TRENDNET.com
 Email: sales@trendware.com

To Order Please Call:
1-888-326-6061