

# TPE-S88

**Power-over-Ethernet Smart Switch  
Quick Installation Guide**

**Commutateur intelligent Power-over-Ethernet  
Guide d'installation rapide**

**PoE-Smart-Switch  
Kurzanleitung zur Installation**

**Guía de instalación rápida de  
conmutador inteligente de Power-over-Ethernet (PoE)**

**Version 01.07.05**



**TRENDnet**<sup>®</sup>  
TRENDware, USA  
**What's Next in Networking**

# Table of Contents

English .....	1
1. Prepare for Installation .....	1
2. Product Detail .....	2
3. Hardware Installation .....	3
4. Configure the Power-over-Ethernet Web Smart Switch .....	4
Troubleshooting .....	9

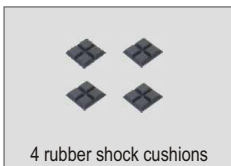
# English QIG

## 1. Prepare for Installation

Thank you for purchasing TRENDnet's TPE-S88 Power-over-Ethernet Smart Switch. This guide will help you set up your Power-over-Ethernet Smart Switch. Following the installation instructions should be quick and easy. If you run into problems, please refer to the Troubleshooting section of this guide. If you need further technical support, please visit [www.TRENDNET.com](http://www.TRENDNET.com) or call technical support by phone.

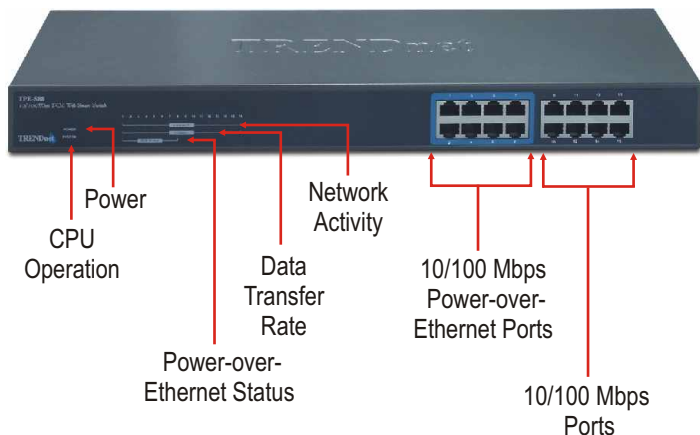
### Verify Package Contents

Please make sure you have everything in the box:



## 2. Product Detail

The TPE-S88 has eight 10/100Mbps Power-over-Ethernet ports and eight 10/100Mbps ports. It also has 5 types of LED that indicate power, CPU operation, network activity, data transfer rate, and Power-over-Ethernet status.



### 3. Hardware Installation

Connect the power cord to the TPE-S88 and plug the power cord into an available power outlet.



## 4. Configure the Power-Over-Ethernet Web Smart Switch

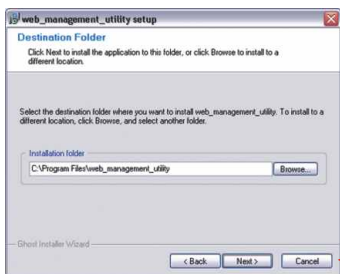
**Note:** For MAC Users, change your computers IP address to 192.168.0.X (where X is an available number from 1-253), and enter 192.168.0.1 in your web browser to access the Print Server's Web Utility.

### For Windows Users

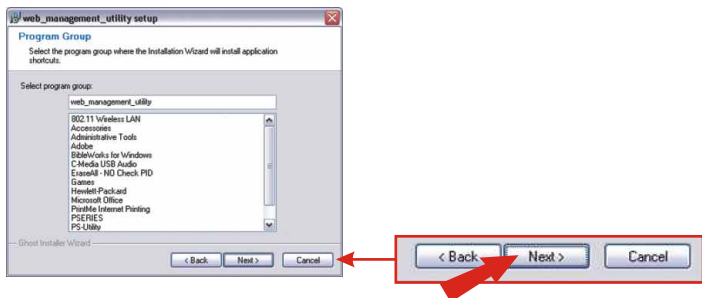
1. Insert the TPE-S88 CD-ROM into your computer's CD-ROM drive.
2. Click **Start** → **Run**. Type **d:\Web-Management Utility\setup.exe** . If your CD-ROM uses a different letter than d, then use a different letter (i.e. **e:\Web-Management Utility\setup.exe**).
3. Click **Next**.



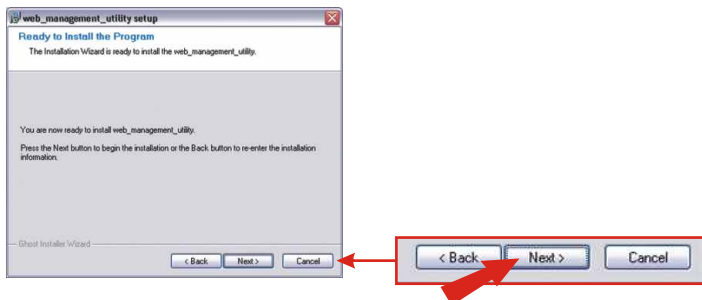
4. Click **Next**.



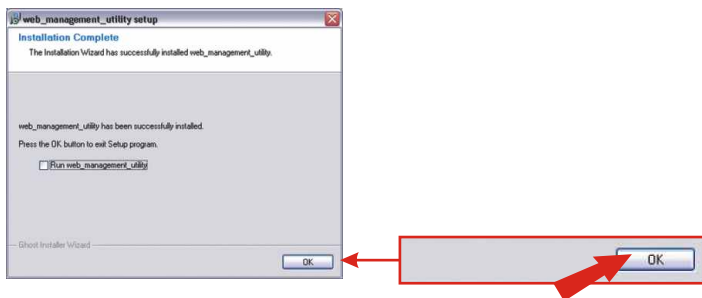
## 5. Click Next.



## 6. Click Next.



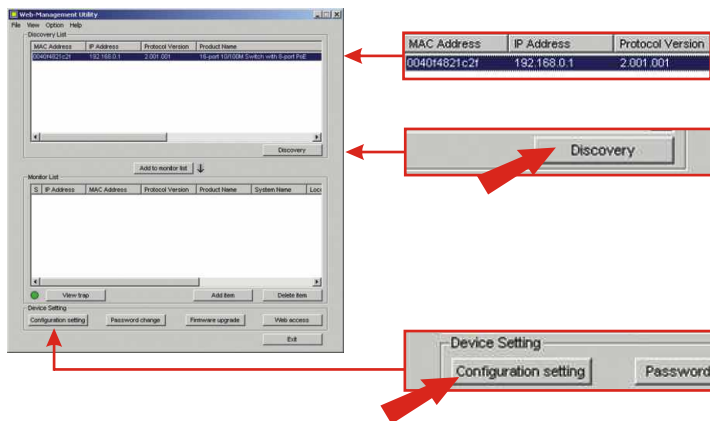
## 7. Click OK.



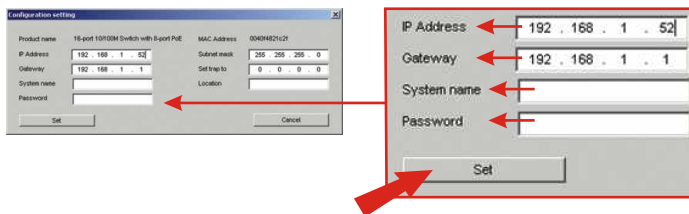
8. Click **Start** → **All Programs** → **web\_management\_utility**. Click the **web\_management\_utility** icon.



9. Click **Discovery**. Select the discovered switch and click **Configuration setting**.

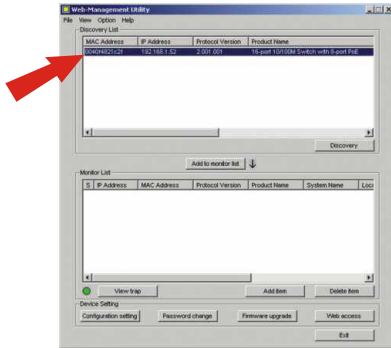


10. Type in the IP address that applies to your existing network. Type in the Default Gateway (i.e. your router's local IP address). Type in a **Password** and Click **Set**.

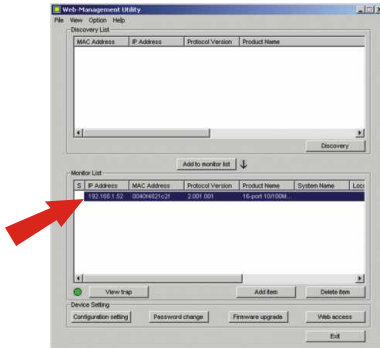




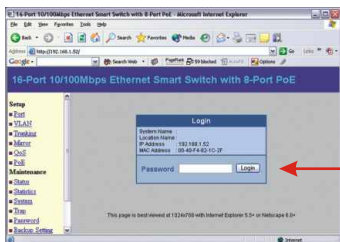
11. Double-click the selected switch.



12. On the **Monitor List**, double-click the selected switch.



13. Type in your password. Click **Login**.



For more information in using all the web smart features, please consult the user's guide.

# Troubleshooting

**Q1: After connecting the TPE-S88 to a power outlet, the LEDs do not turn on?**

**A1:** Please check the following connections:

1. Double check the connection of the power cord to the TPE-S88.
2. Double check the connection of the power cord to the power outlet.
3. Double check that the power outlet is receiving power.

**Q2: When I access the TPE-S88 using a web browser, I get a screen that tells me “only one user can login”. What do I do?**

**A2:** Another computer is configuring the TPE-S88. Please wait until the user logs off.

**Q3: After the user logged off from the web configuration page, I try to login into the TPE-S88, but I still get a screen that tells me “only one user can login.”**

**A3:** Disconnect the power cord from the TPE-S88. Wait for 5 seconds and reconnect the power cord to the TPE-S88. Allow another 3-5 seconds for the switch to power on. Now attempt to access the web configuration page to login.

**Q4: When I connect a computer to the switch's port, the LINK/ACT LED turns on, but the 100Mbps LED remains off.**

**A4:** When the 100Mbps LED remains off, the computer's connection speed is 10Mbps. Please consult the User's guide in the CD-ROM for more information.

**Q5: I connect a PoE device into the switch's PoE port, but the PoE Status LED remains off.**

**A5:** Please check the following connections:

1. Make sure that the CAT 5 cable is properly inserted into the PoE port.
2. Make sure that the CAT5 cable is properly inserted into a PoE device.

If you have further questions, please contact Trendware's Technical Support Department.

## Contact Technical Support

Telephone: +1-310-626-6252  
Fax: +1-310-626-6267  
Website: [www.TRENDNET.com](http://www.TRENDNET.com)  
E-mail: [support@trendware.com](mailto:support@trendware.com)

## Technical Support Hours

7:00AM ~ 6:00PM, Monday through Friday  
Pacific Standard Time (except holidays)

## Certifications

This equipment has been tested and found to comply with FCC and CE Rules. Operation is subject to the following two conditions:

- (1) This device may not cause harmful interference.
- (2) This device must accept any interference received including interference that may cause undesired operation.





TRENDware, USA

**What's Next in Networking**

## **Product Warranty Registration**

Please take a moment to register your product online.  
Go to TRENDware's website at <http://www.TRENDNET.com>

**TRENDware International, Inc.**  
3135 Kashiwa Street  
Torrance, CA 90505

**<http://www.TRENDNET.com>**