

TPE-101I/TPE-102S

Injector/Splitter
User's Guide

Injecteur TPE-101I /Splitter TPE-102S
Guide de l'utilisateur

TPE-101I Injector/TPE-102S Splitter
Benutzeranleitung

Guía del Usuario
inyector TPE-101I/ splitter TPE-102S

Version 01.04.05



TRENDnet[®]
TRENDware, USA
What's Next in Networking

Table of Contents

English	1
1. Prepare for Installation	1
2. Product Detail	2
3. Hardware Installation	4
Troubleshooting	7

English UG

1. Prepare for Installation

Thank you for purchasing TRENDnet's TPE-101I Injector/TPE-102S Splitter. This guide will help you set up your Injector/Splitter. Following the installation instructions should be quick and easy. If you run into problems, please refer to the Troubleshooting section of this guide. If you need further technical support, please visit www.TRENDNET.com or call technical support by phone.

Verify Package Contents

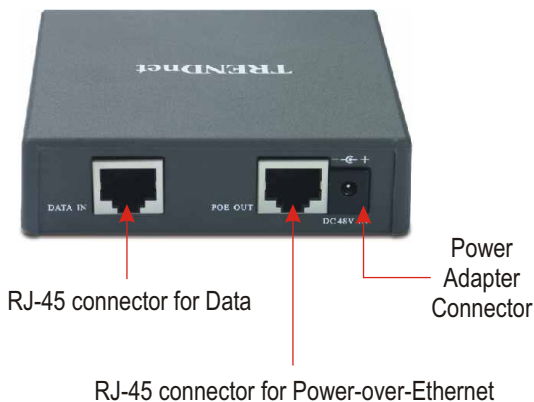
Please make sure you have everything in the box:



2. Product Detail

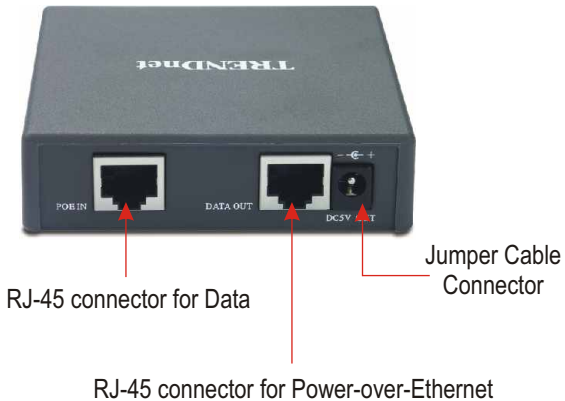
TPE-1011

The TPE-1011 has a RJ-45 connector for data, a RJ-45 connector for Power-over-Ethernet, and a power adapter connector. It also has two LEDs that indicate power and Power-over Ethernet.



TPE-102S

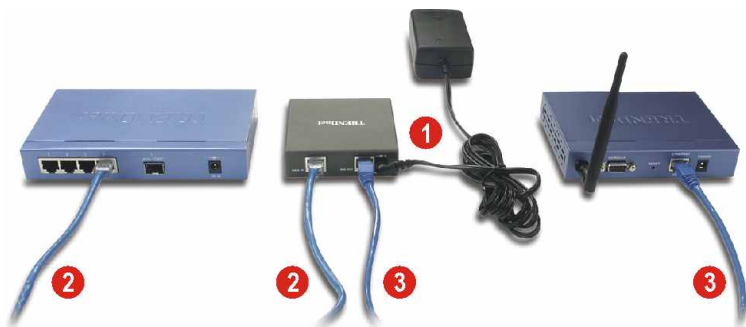
The TPE-102S has a RJ-45 connector for Power-over-Ethernet, a RJ-45 connector for data, and a jumper cable connector. It also has two LEDs that indicate Power Output and Power-over Ethernet.



3. Hardware Installation

Using the TPE-101I for a PoE device

1. Connect the power adapter to the **DC 48V IN** connector.
2. Using a CAT 5 cable, connect a switch's port to the TPE-101I's **Data In** port.
3. Using a CAT5 cable, connect a PoE device to the TPE-101I's **PoE OUT**.



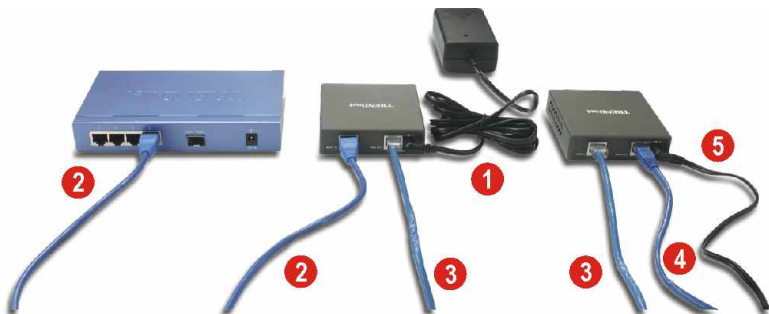
Using the TPE-102S for a non-PoE device

1. Using a CAT5 cable, connect a PoE Injector to the TPE-102S' **PoE IN** port.
2. Using a CAT 5 cable, connect a non-PoE device (e.g. access point) to the TPE-102S' **Data Out** port.
3. Using the provided jumper cable, connect a non-PoE device (e.g. access point) power adapter connector to the TPE-102S' **DC5V OUT** connector.



Using the TPE-101I and the TPE-102S for a non-PoE device

1. Connect the power adapter to the **DC 48V IN** connector.
2. Using a CAT 5 cable, connect a switch's port to the TPE-101I's **Data In** port.
3. Connect a CAT5 cable from the TPE-101I's **PoE OUT** to the TPE102S' **PoE IN** port.
4. Using a CAT 5 cable, connect a non-PoE device (e.g. access point) to the TPE-102S' **Data Out** port.
5. Using the provided jumper cable, connect a non-PoE device (e.g. access point) power adapter connector to the TPE-102S' **DC5V OUT** connector.



Troubleshooting

Q1: Why is the POWER GOOD LED off on the TPE-101I?

A1: Make sure that the PoE splitter or PoE device is connected properly to the TPE-101I.

Q2: Why are both LEDs off on the TPE-102S?

A2: Make sure that the PoE injector or TPE-101I is connected properly to the TPE-102S. (See 3.Hardware Installation)

Q3: Will the TPE-101I work with any PoE device?

A3: The TPE-101I follows the IEEE 802.3af standard, so any PoE device that follows the IEEE 802.3af standard will work with TPE-101I.

Q4: Will the TPE-102S work with any non-PoE device?

A4: Non-PoE devices such as access points will work with the TPE-102S only if the non-PoE device operates at 5V.

Q5: I connected my non-PoE device into the TPE-102S, but my switch does not recognize the device.

A5: Power cycle the non-PoE device by either pulling out the power adapter connector from the PoE injector or disconnecting the CAT 5 cable from the **PoE OUT** port. Reinsert the connection after 5-10 seconds have elapsed.

If you have further questions, please contact Trendware's Technical Support Department.

Contact Technical Support

Telephone: +1-310-626-6252

Fax: +1-310-626-6267

Website: www.TRENDNET.com

E-mail: support@trendware.com

Technical Support Hours

7:00AM ~ 6:00PM, Monday through Friday

Pacific Standard Time (except holidays)

Certifications

This equipment has been tested and found to comply with FCC and CE Rules. Operation is subject to the following two conditions:

(1) This device may not cause harmful interference.

(2) This device must accept any interference received including interference that may cause undesired operation.



TRENDnet[®]

TRENDware, USA

What's Next in Networking

Product Warranty Registration

Please take a moment to register your product online.
Go to TRENDware's website at <http://www.TRENDNET.com>

TRENDware International, Inc.
3135 Kashiwa Street
Torrance, CA 90505

<http://www.TRENDNET.com>