

# TMR-41 PC

**4-in-1 Memory Card Reader/Writer PC Card  
Quick Installation Guide**

**Guide d'installation rapide de  
la carte PC lecteur/enregistreur de carte mémoire 4 en 1**

**4-facher PC-Speicherkartenleser/-schreiber  
Kurzanleitung zur Installation**

**Guía de instalación rápida de  
la Tarjeta PC Lectora/Escritora 4 en 1 de tarjetas de memoria**

**Version 01.28.05**



**TRENDnet**<sup>®</sup>  
TRENDware, USA  
**What's Next in Networking**

# Table of Contents

English .....	1
1. Prepare for Installation .....	1
2. Product Detail .....	2
3. Hardware Installation .....	3
4. Driver Installation .....	6
5. Verify Installation .....	8
Troubleshooting .....	9

# English QIG

## 1. Prepare for Installation

Thank you for purchasing TRENDnet's TMR-41PC. This 4-in-1 Memory Card Reader/Writer PC Card allows you to read and write to 4 different types of memory cards, including Smart Media Card, Memory Stick, Secure Digital Card, and MultiMedia Card. Your new 4-in-1 Memory Card Reader/Writer enables you to quickly and easily transfer data from memory cards to your laptop for image-editing and file-sharing.

This guide will help you set up your 4-in-1 Memory Card Reader/Writer. Following this installation should be quick and easy. If you run into problems, please refer to the Troubleshooting section in the end of this Quick Installation Guide. If you need further technical support, please visit [www.TRENDNET.com](http://www.TRENDNET.com) or call technical support by phone.

### Verify Package Contents

Please make sure you have everything in the box:



### Verify Equipment

Before installing the TMR-41PC, you should have:

1. A Notebook Computer with a PCMCIA Type II PC Card Interface
2. A 300 MHz processor and 32 MB RAM on your computer (Recommended)
3. Windows 98/98SE/ME/2000/XP

## 2. Product Detail

The TMR-41PC is a PC card that has one slot to connect a Smart Media, Memory Stick, Secure Digital, or MultiMedia Card.



# 3. Hardware Installation

## Memory Card Sockets

1. Please follow the instructions below to insert your memory card into the TMR-41PC.

A. If you are using a memory stick Duo/ Pro Duo, insert the memory stick Duo/ Pro Duo into a memory stick Duo adapter and insert the memory stick Duo adapter into the TMR-41PC as shown. Make sure that the copper connectors of the memory stick adapter are facing **up**.



B. If you are using a smart media card, insert the smart media card into the TMR-41PC as shown. Make sure that the copper connectors of the smart media card are facing **down**.



C. If you are using a secure digital card, insert the secure digital card into the TMR-41PC as shown. Make sure that the copper connectors of the secure digital card are facing down.



D. If you are using a multimedia card, insert the multimedia card into the TMR-41PC as shown. Make sure that the copper connectors of the multimedia card are facing down.



2. Turn on your laptop and allow your operating system to fully load.
3. Insert the TMR-41PC into your laptop as shown. Make sure to insert the card all the way into your laptop. You should also hear a beeping sound, confirming that you inserted new hardware



# 4. Driver Installation

## Windows 98/98SE/ME

1. After your computer reboots, the “Add New Hardware Wizard” will appear. Click **Next**.



2. Click **Next**.

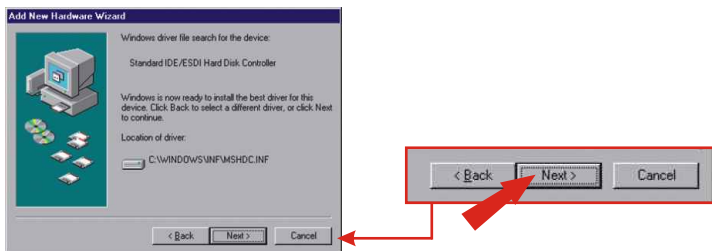


3. Click **Next**.

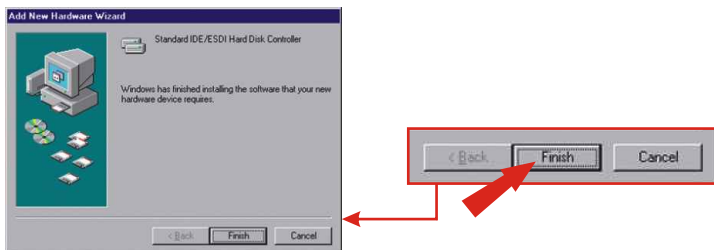




- Once Windows has found the driver file, click **Next** to start installing the files.



- Click **Finish** to complete the driver installation.



**NOTE:** Windows 98 has finished installing the TMR-41PC. You must manually restart your computer before the new settings will take effect.

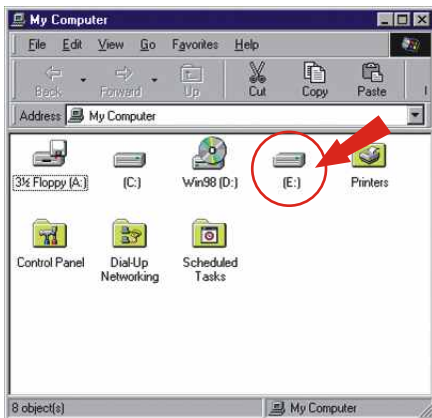
## Windows 2000/XP

- After your computer reboots, Windows will automatically detect your TMR-41PC card.
- Double click **My Computer** on your desktop and verify that your storage device is properly installed.

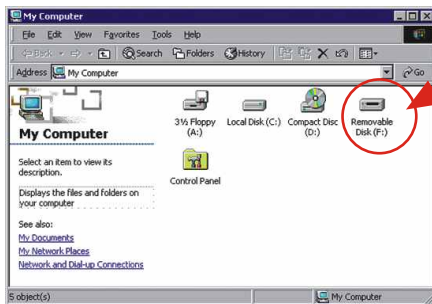
# 5. Verify Installation

After completing the installation, double-click the “My Computer” icon on your desktop. If you see a local disk or removable disk, your 4-in-1 Memory Card Reader/Writer is ready for use.

## Windows 98/98SE/ME



## Windows 2000/XP



# Troubleshooting

## **Q1. Where is the driver diskette? I didn't find one in the box.**

**A1.** The TMR-41PC does not come with a driver diskette or CD-ROM. When you connect your 4-in-1 Memory Card Reader/Writer to the laptop computer's PCMCIA slot with the one of the following memory card-types inserted, it will automatically be recognized by the operating system.

## **Q2. Windows doesn't recognize my new hardware. What should I do?**

**A2.** Go to Start > Control Panel > System > Device Manager. (Start > Control Panel > System > Hardware > Device Manager in Windows 2000/XP) In the list of device-types, locate and double-click "Disk drives". If you see a device with a yellow question mark or exclamation point over it, double-click it. Click the Driver tab, and click Update Driver. Follow the Hardware Update Wizard's instructions to update your computer with the drivers.

## **Q3. I inserted the TMR-41PC into my PCMCIA Type II PC Card Interface slot, but I still do not get a storage device in My Computer.**

**A3.** Make sure that you inserted the TMR-41PC all the way to the end of the PCMCIA slot. See (3. Hardware Installation).

## **Q4. I have inserted the TMR-41PC properly into my slot and verified that my PCMCIA slot supports Type II PC Card Interface, but I still do not see a storage device.**

**A4.** Make sure that your memory card is properly inserted into your TMR-41PC before inserting the TMR-41PC into your PCMCIA slot. See (3. Hardware Installation).

## **Q4. I have a mapped network drive that conflicts with the logical letter assigned to the TMR-41PC, and now I cannot access my TMR-41PC. What do I do?**

**A3.** Disconnect the TMR-41PC to your laptop, disconnect the mapped network drive, and re-insert the TMR-41PC.

If you still encounter problems, please feel free to contact TRENDware's technical support team.

## **Certifications**

This equipment has been tested and found to comply with FCC and CE Rules. Operation is subject to the following two conditions:

- (1) This device may not cause harmful interference.
- (2) This device must accept any interference received.  
Including interference that may cause undesired operation.





**What's Next in Networking**

## Product Warranty Registration

Please take a moment to register your product online.  
Go to TRENDware's website at <http://www.TRENDNET.com>

## TRENDnet Technical Support

### US/Canada Support Center

#### Contact

**Telephone:** 1(310) 626-6252

**Fax:** 1(310) 626-6267

**Email:** [support@trendnet.com](mailto:support@trendnet.com)

#### Tech Support Hours

7:30am - 6:00pm Pacific Standard Time

Monday - Friday

### European Support Center

#### Contact

##### Telephone

Deutsch : +49 (0) 6331 / 268-460

Français : +49 (0) 6331 / 268-461

Español : +49 (0) 6331 / 268-462

English : +49 (0) 6331 / 268-463

Italiano : +49 (0) 6331 / 268-464

Dutch : +49 (0) 6331 / 268-465

**Fax:** +49 (0) 6331 / 268-466

#### Tech Support Hours

8:00am - 6:00pm Middle European Time

Monday - Friday

**TRENDware International, Inc.**  
3135 Kashiwa Street. Torrance, CA 90505  
**<http://www.TRENDNET.com>**