



## Quick Installation Guide



**TMR-121EC**  
H/W: V1.0R

# Table of Contents

Deutsch .....	1
1. Bevor Sie anfangen .....	1
2. Installation .....	3
Troubleshooting .....	5

# 1. Bevor Sie anfangen



## Packungsinhalt

- TMR-121EC
- Anleitung zur Schnellinstallation

## Systemanforderungen

- Steckplatz für Express-Karte /34 oder /54
- Prozessor: 300 MHz oder schneller (XP/2000)/ 800MHz oder schneller (Windows Vista)
- Speicher: 256MB RAM oder mehr (XP/2000)/ 512MB RAM oder mehr (Windows Vista)
- Windows 2000/XP(32-/64-bit)/Vista(32-/64-bit), Mac OS X (10.1 ~ 10.5)
- Unterstützte Speicherkarten

### Direkter Anschluss

XD-Picture Typ M / Typ H (XD) V. 1.2B

Memory Stick (MS) v. 1.0

MemoryStick Pro (MS Pro) v. 1.0

Secure Digital (SD) v1.0/1.1/2.0/ SDHC (class 6)

Micro Secure Digital (MMC, MMC Plus) v. 4.1

### Connect with Adapter

MemoryStick Duo (MS Duo) v. 1.0

MemoryStick Pro Duo (MS Pro Duo) v. 1.0

ReSize MultiMediaCard (RS MMC) v. 3.31

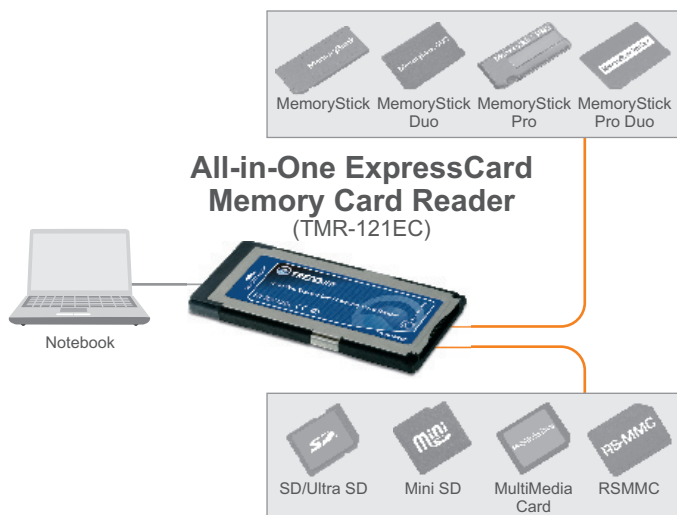
MultiMediaCard Mobile (MMC Mobile) v. 4.1.

MultiMediaCard Micro (MMC Micro) v. 4.1

Mini Secure Digital ( Mini DS) v.1.0/1.1

Micro Secure Digital (Micro SD, T-Flash) v. 1.0

# Anwendung



## 2. Installation

**Hinweis:** Für Installationsanweisungen unter Mac OS X (10,1-10,5), lesen Sie bitte Frage 1 im Abschnitt "Troubleshooting".

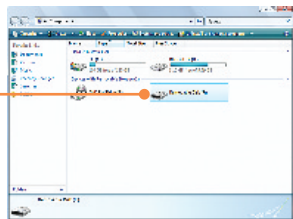
1. Schalten Sie Ihr Notebook ein und warten Sie, bis der Windows-Desktop erscheint.

2. Stecken Sie die Express-Karte fest in einen freien Express-Kartensteckplatz Ihres Notebooks.



3. Die Treiber werden automatisch installiert.

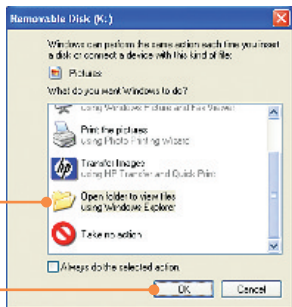
4. Doppelklicken Sie auf **My Computer** (Arbeitsplatz) bzw. **Computer** (bei Windows Vista) und prüfen Sie, dass dort das Symbol für den Wechseldatenträger aufgeführt ist.



5. Stecken Sie Ihre Speicherkarte in den entsprechenden Steckplatz des Kartenlesers.

6. Klicken Sie auf **Open folder to view files using Windows Explorer (Ordner öffnen, um Dateien mit dem Windows Explorer anzuzeigen).**

7. Klicken Sie auf **OK** (Windows 2000/XP only).



### Registrieren Sie Ihr Produkt

Nehmen Sie sich bitte einen Moment Zeit und registrieren Sie Ihr Produkt online, so dass Sie unsere umfassenden Support- und Kundendienstleistungen in Anspruch nehmen können: [www.TRENDnet.com/register](http://www.TRENDnet.com/register)  
Vielen Dank für den Kauf eines TRENDnet-Produkts

**Q1: How do I install on my Macintosh?**

**A1:** First, verify that your Macintosh is running Mac OS X (10.1~10.5). Other versions of Mac OS are not supported. Second, turn on your notebook PC. Third, insert the TMR-121EC firmly into an available ExpressCard slot. Drivers will install automatically. Fourth, insert your memory card to the TMR-121EC. Fifth, the memory card will appear as a removable media device icon (the name and appearance of each icon depends on the type of memory card).

**Q2: Can I connect or disconnect the TMR-121EC while the computer is on?**

**A2:** Yes, you can connect or disconnect the TMR-121EC because it is Plug-and-Play and hot-pluggable.

**Q3: I am unable to insert my memory card into the TMR-121EC. What should I do?**

**A3:** First, make sure that you are using a supported memory card (see section 1). Second, insert XD-Picture cards with gold contacts facing up. Insert all other memory cards with the gold contacts facing down. Third, an adapter is required for the following memory cards: MS Duo, MS Pro Duo, RS MMC, MMC Mobile, MMC Micro, Mini DS, and Micro SD.

**Q4: After successful installation of the TMR-121EC, I inserted my memory card into the slot and it is not working? What should I do?**

**A4:** Make sure the memory card is properly inserted in the TMR-121EC.

If you have any questions regarding the TMR-121EC Memory Card Reader/Writer, please refer to the User's Guide included on the Utility & Driver CD-ROM or contact TRENDnet's Technical Support Department..

### Certifications

This equipment has been tested and found to comply with FCC and CE Rules.

Operation is subject to the following two conditions:

- (1) This device may not cause harmful interference.
- (2) This device must accept any interference received. Including interference that may cause undesired operation.



Waste electrical and electronic products must not be disposed of with household waste. Please recycle where facilities exist. Check with you Local Authority or Retailer for recycling advice.



**NOTE:** THE MANUFACTURER IS NOT RESPONSIBLE FOR ANY RADIO OR TV INTERFERENCE CAUSED BY UNAUTHORIZED MODIFICATIONS TO THIS EQUIPMENT. SUCH MODIFICATIONS COULD VOID THE USER'S AUTHORITY TO OPERATE THE EQUIPMENT.

### ADVERTENCIA

En todos nuestros equipos se mencionan claramente las características del adaptador de alimentación necesario para su funcionamiento. El uso de un adaptador distinto al mencionado puede producir daños físicos y/o daños al equipo conectado. El adaptador de alimentación debe operar con voltaje y frecuencia de la energía eléctrica domiciliar existente en el país o zona de instalación.





## Product Warranty Registration

Please take a moment to register your product online.  
Go to TRENDnet's website at <http://www.trendnet.com/register>

**TRENDnet**<sup>®</sup>  
20675 Manhattan Place  
Torrance, CA 90501  
USA