



User's Guide

TK-209K
TK-409K

ABOUT THIS GUIDE

The 2/4 Port USB KVM Switch with Audio lets you manage 2/4 computers with just one set of keyboard, monitor, mouse, and a set of speakers and microphone. The device comes with 2/4 sets of USB KVM and Audio cables, no additional equipment required. The USB console port provides support for the latest USB keyboard and mouse. Popular hardware platforms such as PC, Linux and Macs are supported. Users can switch between PCs using hot-key, push button, or provided Windows-based software application for flexible management. Users can also hot-plug PCs on the fly to avoid downtime. Its compact size makes it ideal for home and business environment.

Package Contents

Unpack the package and check all the items carefully, and be certain that you have:

- ◆ 1 x TK-209/409K USB KVM Switch.
- ◆ 1 x Utility CD-ROM
- ◆ Multi-Language Quick Installation Guide
- ◆ 2/4 Sets of USB KVM Cables
- ◆ 2/4 Sets of Audio Cables

If any item contained is damaged or missing, please contact your local dealer immediately. Also, keep the box and packing materials in case you need to ship the unit in the future.

System Requirements

- ◆ Operating System:
 - Microsoft Windows 95/98/ME/NT/2000/XP/2003 Server.
 - Linux, Mac OS.
- ◆ Type A USB keyboard
- ◆ Type A USB mouse
- ◆ VGA or SVGA Compatible Monitor
- ◆ Microphone and Speaker (optional)

General Features

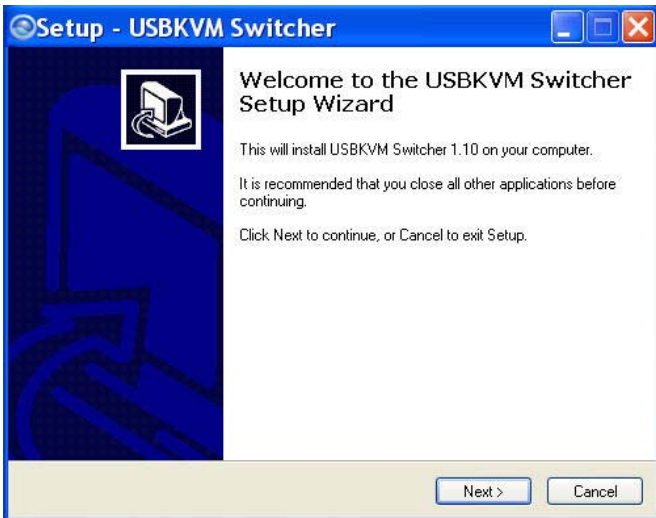
- ◆ Management 2/4 Computers
- ◆ 2/4 port USB KVM Switch with 1 set of Microphone/Speaker port.
- ◆ 2/4 sets of USB KVM Cables
- ◆ 2/4 sets of Audio & Microphone Cables
- ◆ Supports Microsoft IntelliMouse, Optical Mouse, Logitech Net Mouse and more
- ◆ Supports super High Video Quality, up to 2048 x 1536 VGA resolution
- ◆ Supports Windows 98/98SE/ME/2000/XP/2003 Server, Linux, and Mac OS
- ◆ Multi-Platform supports for PCs, Macintosh G3/G4, iMac and Mac Mini
- ◆ Hot-Plug pluggable. Adds PCs or removes the connected PCs for maintenance without powering down the KVM Switch or other PC's.
- ◆ Switches PC by hot-keys, push button or Windows-Base Client Switching software
- ◆ Auto-Scan & LED display for easy status monitoring
- ◆ User definable hot-key (Windows Only)
- ◆ USB Interface Power method
- ◆ 2-Year Warranty

Installing the KVM Client Switching Software

Insert the Installation CD-ROM into your computer's CD-ROM drive to initiate the Auto-Run program, and the menu screen will appear as below.



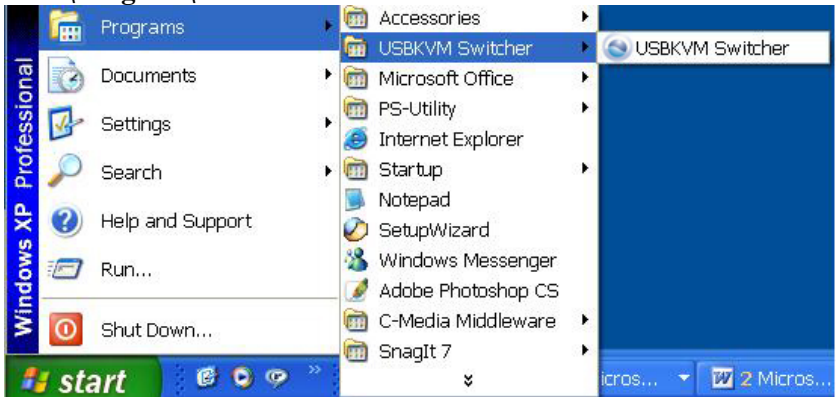
1. Click **Client Switching Software** from the Auto-Run menu screen. The welcome screen appears as below. Click **Next >**.



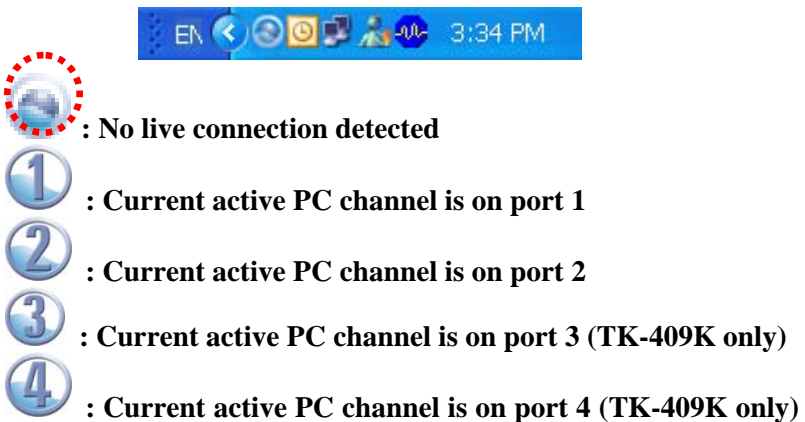
2. When completed, click **Finish**.



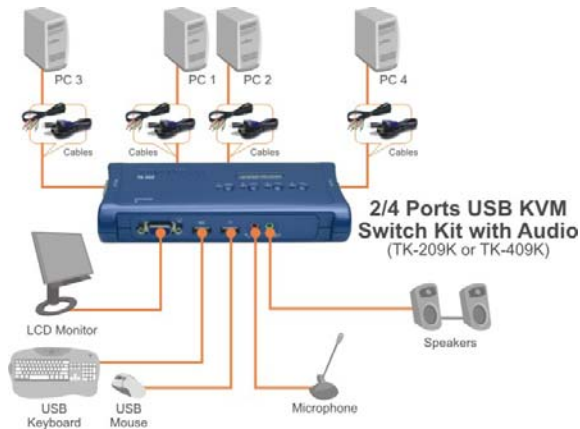
3. After installing the utility, the Client Switching Software is automatically installed to your computer, and creates a folder in **Start\Program\USBKVM Switcher**.



4. After the installation is completed, you will see a KVM Switcher icon on the system tray of your window desktop. Just right click to evoke the operation menu and double-click to evoke configuration box. For operation details of the KVM Switcher software, please refer to the *Operation Reference*.



5. Connect the shared USB keyboard, mouse, monitor to your KVM Switch.
6. Connect each KVM PC port to a computer via included USB KVM Cables. After you have connected the KVM and computers properly, the KVM Switch is ready to use.



NOTE:

- *The KVM Switching software only supports Windows operating system on PC Platforms. For the other platform such as Linux, you can still use the keyboard hotkey “ScrLK + ScrLK” to switch between PCs. Mac OS only supports push buttons function.*
- *Some computers with USB interface might be need to manual enable the USB option in the BIOS setting before using any USB device. If your USB interface does not work, please check the USB option Status in BIOS.*
- *If you are using the Windows 98(SE) and has not installed a USB mouse yet, it is highly recommend that you connect the USB mouse directly to computer first before it connects to KVM Switch.*

Operate the KVM Switch

There are three methods to control your KVM Switch for PC:

- (1) face-panel push button
- (2) hotkey sequence
- (3) KVM Client Switching Software

Face-panel button

The face-panel button allows you a direct control over KVM switching operation. Simply press the button to switch to the corresponding PC port.

You can use the face-panel button to switch to an empty port that is not connected with any computer. Normally, if you use keyboard hotkeys or the KVM Switching software, you will not be able to switch to an empty port.

Keyboard hotkeys

User-definable hotkeys for PC selection:

Hotkey sequence = Ctrl + Alt + [command key]*

Universal hotkey for PC toggle-switching:

** Please refer to next section for keys that are qualified to be used as a command key*

NOTE:

- *Both the universal hotkey, ScrLk + ScrLk and the user-definable hotkey, Ctrl + Alt + [command key] **WILL NOT** allow you to switch to an empty port that is not connected with any computer. To force your KVM to switch to an empty port, just press the face-panel button to switch.*

Universal Hotkey sequence = ScrLk + ScrLk

** For other operating systems on PC such as Linux, you can still use this special hotkey to facilitate PC switching. This special hotkey is not available for Mac. However, you can press button to switch in any case.*

- Each keystroke within a hotkey sequence should be pressed within 2 seconds. Otherwise, the hotkey sequence will not be validated.
- After perform port switching, you have to wait till the KVM Switch icon shows forth the target port before you can perform next switching again. The KVM Switch icon could be found on the system tray of your Windows desktop after its installation.
- All the hotkeys are only functional after your PCs are booting into the OS. If you want to switch PC in the BIOS/preboot stage, press the face-panel button to switch.

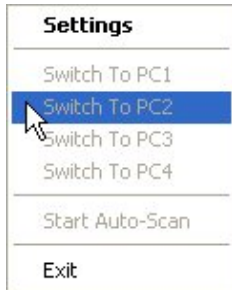
KVM Switching Software (only for Windows platform)

In addition to PC switching, the KVM Switching Software also allows you more advanced functions such as described in the next section.

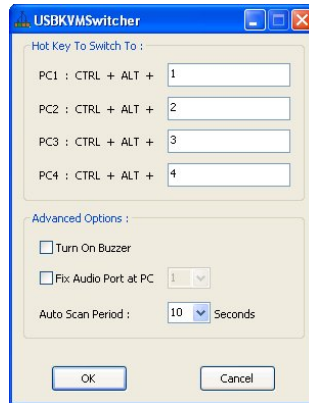
KVM Switch Operation Reference

Switch to PC x by Operation Menu

Right-click the KVM Switching icon from the system tray to evoke the operation menu, then select whichever PC that is available for switching. Once you select a PC channel, it will immediately switch to that PC. Note that the unconnected port(s) or the active port will be grayed-out and non-selectable.



**KVM Client Switch
Operation Manual**



**KVM Client Switch
Configuration Dialog Box**

You can also

Switch to PC x by Keyboard Hotkeys

Hit the hotkey according to your current hotkey definition:

Hotkey sequence = Ctrl + Alt + [command key]*

** The factory default hotkey setting is Ctrl + Alt + 1/2/3/4 for PC 1/2/3/4. You can also use ScrLk + ScrLk to switch PC.*

Start Auto-scan

Right-click the KVM Switch icon to evoke the operation menu, then select *Start Auto-Scan* to activate auto-scanning.

Stop Auto-scan

(While auto-scanning) Right-click the KVM Switch icon to evoke the operation menu, then select *Stop Auto-Scan* to de-activate auto-scanning. Or you can press any button on the face-panel to stop Auto-scan.

KVM Switcher configuration

Right-click the KVM Switcher icon and select *Settings* or double-click the icon to bring up the configuration dialog box.

Define Hotkey commands

You can specify the command key as you like by typing it in. For example, you can specify the hotkey for switching to PC 1 as CTRL + ALT + A by typing an A (not case-sensitive) in the editable field.

Hotkey Sequence = CTRL + ALT + [command key]*

** The command key is user-definable via the configuration dialog box*

- Except those control keys such as Alt, Ctrl, Shift, CAPS, Tab, Esc and those functions keys and edit keys, all other keys on the keyboard, including those number keys on the number pad are all qualified to be used a hotkey command key. In addition

to the software KVM Switching by the operation menu and the user-defined hotkeys, you can always use the universal hotkey for PC switching – ScrLk + ScrLk

Fix Audio Port at PC *x*

Check this option and then select the PC to fix the audio/mic channel to the selected PC. Once this option is checked, the audio/mic channel will be fixed and become non-switchable.

Auto Scan Period

Select the Autoscan period from 10 ~ 60 seconds with an increment of 5 seconds. The Auto-scan period is the time your KVM Switch will wait to switch to next PC.



TRENDnet

TRENDnet Technical Support

US • Canada

Toll Free Telephone: 1(866) 845-3673

24/7 Tech Support



Europe (Germany • France • Italy • Spain • Switzerland • UK)

Toll Free Telephone: +00800 60 76 76 67

English/Espanol - 24/7

Francais/Deutsch - 11am-8pm, Monday - Friday MET

Worldwide

Telephone: +(31) (0) 20 504 05 35

English/Espanol - 24/7

Francais/Deutsch - 11am-8pm, Monday - Friday MET

Product Warranty Registration

Please take a moment to register your product online.

Go to TRENDnet's website at <http://www.trendnet.com>

TRENDnet

3135 Kashiwa Street
Torrance, CA 90505
USA