

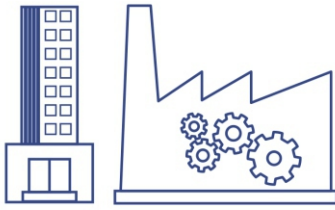
8-Port Hardened Industrial Gigabit PoE+ DIN-Rail Switch

TI-PG80 (v1.3R)

- 8 x Gigabit PoE+ Ethernet ports
- Up to a 200 Watt full PoE+ power budget
- 16 Gbps switching capacity
- Hardened IP30 rated metal switch
- Includes DIN-rail and wall mounts
- Extreme -40 to 75 °C (-40 to 167 °F) operating temperature range
- Dual redundant power inputs with overload current protection
- Alarm output triggered by power failure
- Powers supply sold separately (Model TI-S24048)

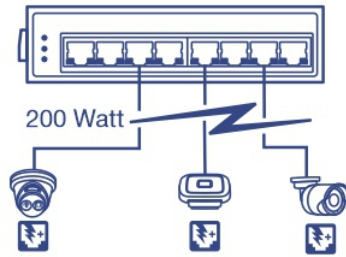
TRENDnet's Industrial Gigabit PoE+ DIN-Rail Switches feature a rugged IP30 rated metal enclosure. These industrial unmanaged PoE+ switches are designed to withstand a high degree of vibration and shock, while operating in both high and low temperatures for industrial environments within -40° – 75° C (-40° – 167° F). Redundant power inputs with overload current protection on each industrial unmanaged PoE+ switch minimizes network downtime.

Installers and integrators can save on equipment costs and reduce installation time with TRENDnet's Industrial Gigabit Switches by delivering up to 30W per port of PoE power and data over existing Ethernet cables. With PoE technology, users only need one set of cables to deliver both data and power from the industrial unmanaged PoE+ switch. With these industrial unmanaged PoE+ switches, easily network PoE devices such as high-power wireless access points, PTZ and other advanced IP cameras, VoIP phone systems, IPTV decoders, access controls, and more.



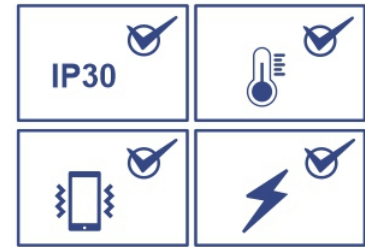
Industrial Applications

Networks devices for manufacturing, general industrial, warehousing, surveillance, and corporate applications.



PoE+ Power

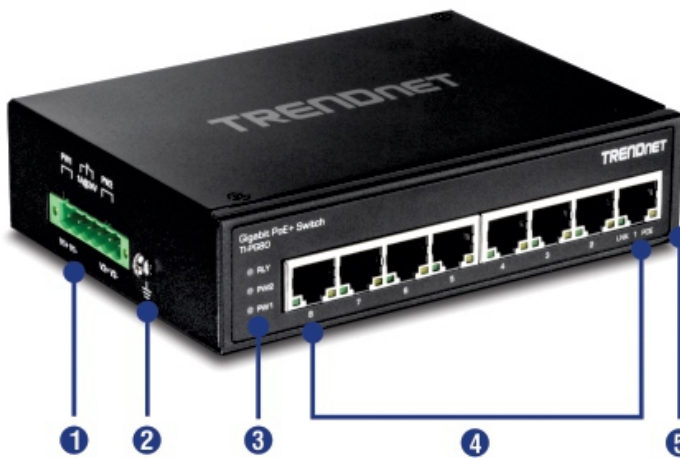
Provides full PoE+ (30 Watts) per port for devices such as access points, cameras, access control equipment, and more.



Extreme Environments

Hardened IP30 switch, with a -40 to 75 °C (-40 to 167 °F) operating temperature range, functions in most environments.

NETWORKING SOLUTION



- 1 Terminal block slot
- 2 Grounding point
- 3 LED indicators
- 4 Gigabit PoE+ ports
- 5 IP30 rated metal housing
- 6 Terminal block
- 7 Wall mounting kit
- 8 DIN-rail mount

FEATURES



Full PoE+ Power Budget

Supplies up to 30 Watts of PoE/PoE+ power per port (802.3at/802.3af) with an up to 200 Watt PoE power budget



Network Ports

8 x Gigabit PoE+ Ethernet ports



DIN-Rail/Wall Mounts

IP30 rated metal enclosure with included DIN-rail and wall mount hardware



Switching Capacity

16 Gbps switching capacity



Redundant Power

Dual redundant power inputs with overload current protection (power supply sold separately: model TI-S24048)



Alarm Output

Alarm output triggered by power failure of primary and/or redundant power



Jumbo Frame

Sends larger packets, or Jumbo Frames (up to 9 KB), for increased performance



Extreme Temperatures

Hardened switch is rated for an operating temperature range of -40 to 75 °C (-40 to 167 °F)



Electro Magnetic Compliance

Complies with FCC Part 15 Subpart B Class A and CE EN 55022 Class A standards



Certifications

Rated for information technology (ITE) equipment (EN55022/24) and industrial, scientific, and medical (ISM) Equipment (EN55011)



Shock and Vibration Resistant

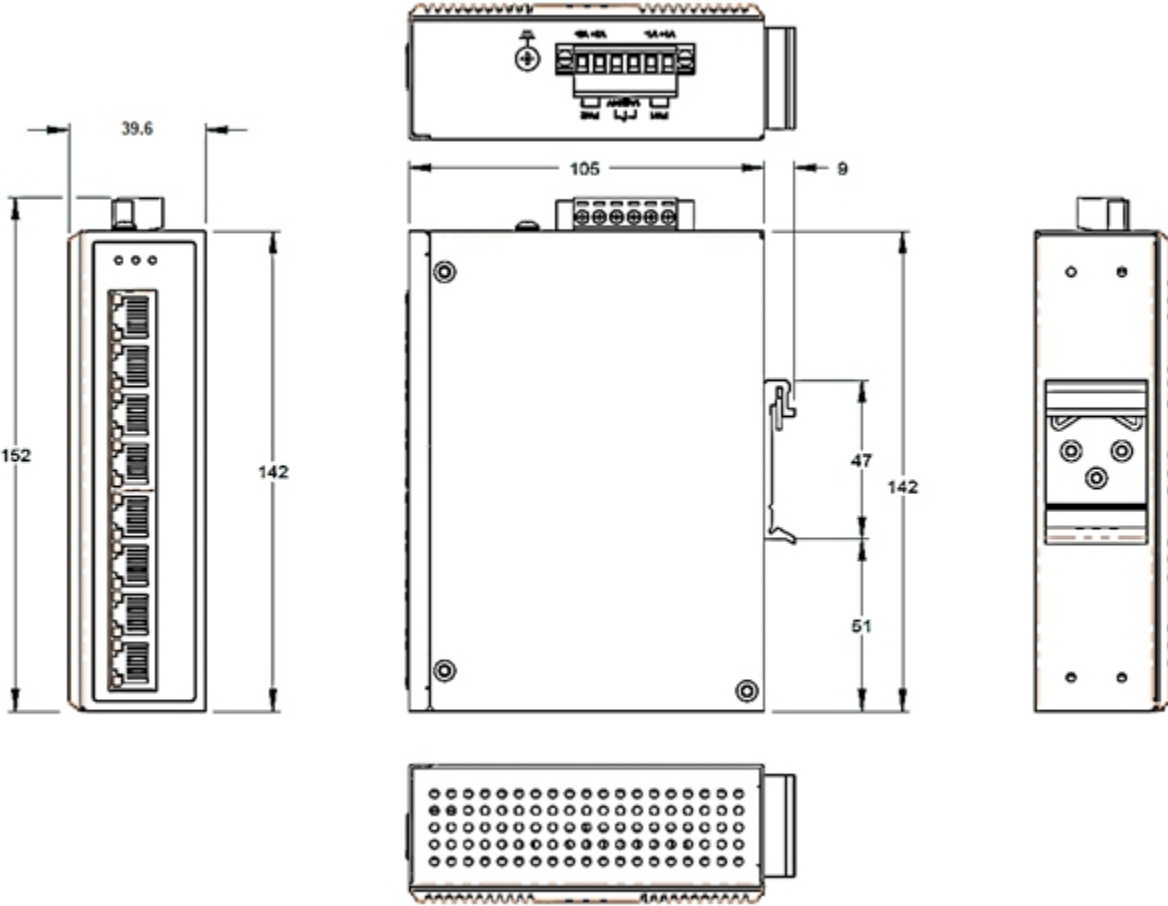
Rated for shock (IEC 60068-2-27), freefall (IEC 60068-2-32), and vibration (IEC 60068-2-6)



Grounding Point

Grounding point protects equipment from external electrical surges

DIMENSIONS (mm)



SPECIFICATIONS

Standards

- IEEE 802.3
- IEEE 802.3u
- IEEE 802.3ab
- IEEE 802.3x
- IEEE 802.3af
- IEEE 802.3at

Device Interface

- 8 x Gigabit PoE+ ports
- 6-pin removable terminal block
- LED indicators
- DIN-Rail mount
- Wall mount
- Grounding point

Data Transfer Rate

- Ethernet: 10Mbps (half duplex), 20Mbps (full duplex)
- Fast Ethernet: 100Mbps (half duplex), 200Mbps (full duplex)
- Gigabit: 2000Mbps (full duplex)

Performance

- Data RAM Buffer: 1024KB
- Switching Fabric: 16Gbps
- MAC Address Table: 8K entries
- Jumbo Frame: 9KB
- Forwarding rate: 11.9Mpps (64-byte packet size)

Special Features

- Hardened components rated for extreme temperatures
- Dual power inputs
- Auto-Negotiation
- Auto store and forward architecture
- Automatic address learning and address aging
- ESD 8KV and Surge 2KV protection

Power

- Input: 48 - 56V DC
- Compatible power supply: TI-S24048 (sold separately)
- Max. consumption: 5.76W @48D VC

PoE

- 802.3at: Up to 30W per port
- PoE budget: 200W @56V DC
- PoE Mode A: Pins 1, 2, 3, and 6 for power

Terminal Block

- Redundant power inputs, alarm relay contact, 6 pin
- Wire range: 0.34mm² to 2.5mm²
- Solid wire (AWG): 12-24/14-22
- Stranded wire (AWG): 12-24/14-22
- Torque: 5 lb. – In / 0.5Nm / 0.56 Nm
- Wire strip length: 7-8mm

Alarm Relay Contact

- Relay outputs with current carrying capacity of 1A, 24V DC
- Short circuit mode when two power sources are connected
- Open circuit mode when only one power source is connected

MTBF

- 532,641 hours

Housing

- IP30 metal case
- DIN-rail mount
- Wall mount
- Grounding point
- 8KV ESD protection
- 2KV surge protection

Operating Temperature

- - 40° – 75° C (-40° – 167° F)

Operating Humidity

- Max. 95 % non-condensing

Dimensions

- 143 x 104 x 36mm (5.6 x 4.1 x 1.4 in.)

Weight

- 554g (1.22 lb)

Certifications

- CE
- FCC
- Shock (IEC 60068-2-27)
- Freefall (IEC 60068-2-32)
- Vibration (IEC 60068-2-6)

Warranty

- 3 year

Package Contents

- TI-PG80
- Quick Installation Guide
- Removable terminal block
- DIN-Rail / wall mount kit

All references to speed are for comparison purposes only. Product specifications, size, and shape are subject to change without notice, and actual product appearance may differ from that depicted herein.