

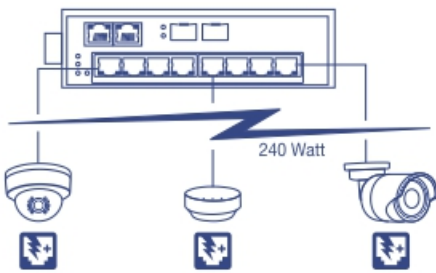


## 10-Port Industrial Gigabit PoE+ DIN-Rail Switch

TI-PG102 (v1.0R)

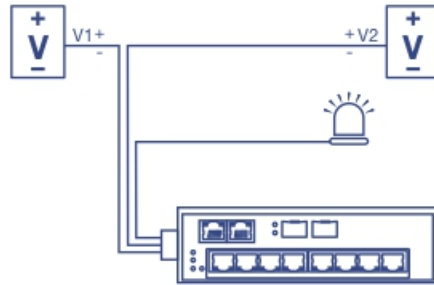
- 8 x Gigabit PoE+ ports
- 2 x Gigabit RJ-45 / SFP shared ports
- 240 W PoE power budget
- 20 Gbps switching capacity
- Hardened IP30 rated metal switch
- Includes DIN-rail and wall mounts
- Operating temperature range of -40° – 75°C (-40° – 167°F)
- Dual redundant power inputs with overload current protection
- Alarm output triggered by power failure
- Power supply sold separately (models: TI-S24048 / 48VDC3000)

TRENDnet's 10-Port Industrial Gigabit PoE+ DIN-Rail Switch, model TI-PG102, has eight gigabit PoE+ ports with a 240 W PoE power budget, plus two gigabit RJ-45 / SFP shared ports. Users are able to connect eight PoE+ devices to the switch, while still providing two gigabit ports for additional network connections. The switch is equipped with an IP30 rated metal enclosure, designed to withstand a high degree of vibration and shock, while operating within a wide temperature range of -40° – 75°C (-40° – 167°F) for industrial environments.



### PoE Power

A 240 W PoE+ power budget supplies up to eight Power over Ethernet devices with PoE+ power.



### Fault Tolerance

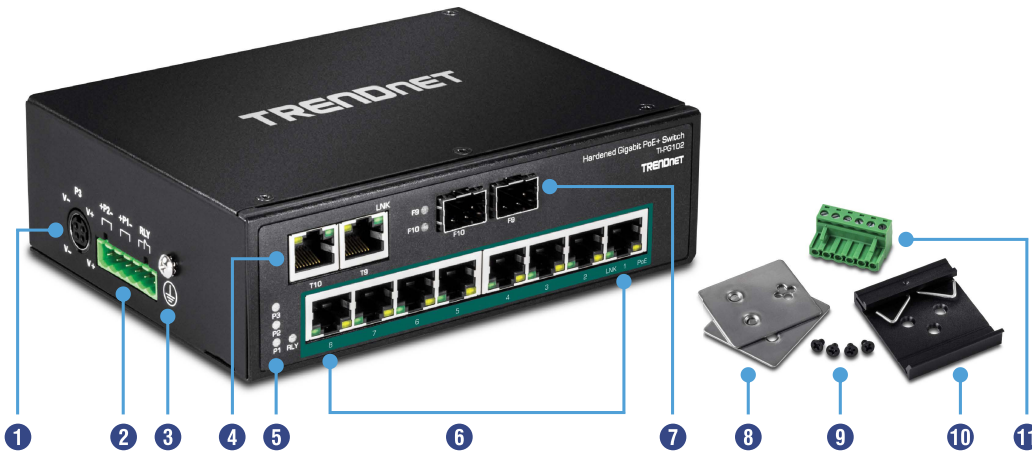
Features dual redundant power inputs with output alarm relay.



### Industrial Hardened Design

Equipped with a rugged IP30 rated housing, designed to withstand a high degree of vibration, shock, and operate within a wide temperature range of -40 – 75°C (-40 – 167°F).

## Networking Solution



- 1 AC power port
- 2 Terminal slot for DC power
- 3 Grounding point
- 4 Shared Gigabit RJ-45 ports
- 5 LED indicators
- 6 Gigabit PoE+ ports
- 7 Shared Gigabit SFP slots
- 8 Wall mount kit
- 9 Screws
- 10 Din-rail mount
- 11 Terminal block



### Full PoE+ Power Budget

Supplies up to 30 W of PoE / PoE+ power per port with a 240 W PoE power budget



### Network Ports

8 Gigabit PoE+ ports plus 2 Gigabit RJ-45 / SFP shared ports



### DIN-Rail / Wall Mounts

IP30 rated metal enclosure with included DIN-rail and wall mount hardware



### Switching Capacity

20 Gbps switching capacity



### Redundant Power

Dual redundant power inputs with overload current protection (power supply sold separately models: TI-S24048 / 48VDC3000)



### Alarm Relay

Alarm relay triggered by power failure of primary and / or redundant power



### Jumbo Frame

Sends larger packets, or Jumbo Frames (up to 10 KB), for increased performance



### Extreme Temperatures

Industrial switch is rated for an operating temperature range of -40 – 75°C (-40 – 167°F)



### Shock and Vibration Resistant

Rated for shock (EN 60068-2-27), freefall (EN 60068-2-32), and vibration (EN 60068-2-6)



### Grounding Point

Grounding point protects equipment from external electrical surges

## Specifications

### Standards

- IEEE 802.3
- IEEE 802.3u
- IEEE 802.3ab
- IEEE 802.3z
- IEEE 802.3x
- IEEE 802.3af
- IEEE 802.3at

### Device Interface

- 8 x Gigabit PoE+ ports
- 2 x Gigabit Ethernet ports
- 2 x Shared SFP slots
- 6-pin removable terminal block
- LED indicators
- DIN-Rail mount
- Wall mount
- Grounding point

### Data Transfer Rate

- Ethernet: 10 Mbps (half duplex), 20 Mbps (full duplex)
- Fast Ethernet: 100 Mbps (half duplex), 200 Mbps (full duplex)
- Gigabit: 2000 Mbps (full duplex)

### Performance

- Data RAM Buffer: 2048 KB
- Switching Fabric: 20 Gbps
- MAC Address Table: 16 K entries
- Forwarding rate: 14.8 Mpps (64-byte packet size)

### Special Features

- Hardened components rated for extreme temperatures
- Dual redundant power inputs
- Auto-Negotiation
- Auto store and forward architecture
- Automatic address learning and address aging
- ESD 6 KV protection

### Power

- Input: 48 - 56 V DC
- Compatible power supply: TI-S24048 (sold separately)
- Consumption: 5.67 W max. (without PD)

### PoE

- Per port up to 30 W
- PoE budget: 240 Watts

### Terminal Block

- Redundant power inputs, alarm relay contact, 6 pin
- Wire range: 0.34 mm<sup>2</sup> to 2.5 mm<sup>2</sup>
- Solid wire (AWG): 12-24 / 14-22
- Stranded wire (AWG): 12-24 / 14-22
- Torque: 5 lb. – In / 0.5 Nm / 0.56 Nm
- Wire strip length: 7-8 mm

### Alarm Relay Contact

- Relay outputs with current carrying capacity of 1 A, 24 V DC
- Open circuit mode when two power sources are connected
- Short circuit mode when only one power source is connected

### MTBF

- 510,400 hours

### Housing

- IP30 metal case
- DIN-rail mount
- Wall mount
- Grounding point
- ESD 6 KV protection

### Operating Temperature

- -40 to 75 °C (-40 to 167 °F)

### Operating Humidity

- Max. 95 % non-condensing

### Dimensions

- 155 x 120 x 48 mm (6.1 x 4.7 x 1.9 in.)

### Weight

- 445 g (1 lb)

### Certifications

- CE
- FCC
- Shock (EN 60068-2-27)
- Freefall (EN 60068-2-32)
- Vibration (EN 60068-2-6)

### Warranty

- Limited Lifetime Warranty\*

### Package Contents

- TI-PG102
- Quick Installation Guide
- Removable terminal block
- DIN-rail and wall mount kit

\*TRENDnet offers a limited lifetime warranty for all of its metal-enclosed network switches that have been purchased in the United States/Canada on or after 1/1/2015. Cooling fan and internal power supply carry a one-year warranty.

