

TFW-H3PI

**3-port FireWire Host PCI Card
Quick Installation Guide**

**Guide d'installation rapide pour le
Carte PCI FireWire 3 ports**

**Anleitung zur Schnellinstallation des
FireWire Host PCI-Karte mit 3 Anschlüssen**

**Guía de Instalación Rápida para
Tarjeta PCI host FireWire de 3 puertos**

Version 08.23.04



TRENDnet[®]
TRENDware, USA
What's Next in Networking

Table of Contents

English	1
1. Prepare for Installation	1
2. Product Detail	2
3. Hardware Installation	3
4. Driver Installation	4
5. Verify Installation	7
Troubleshooting	10

English QIG

1. Prepare for Installation

Thank you for purchasing the TRENDnet TFW-H3PI 3-port FireWire Host PCI Card.

This guide will help you set-up your 3-port FireWire PCI Host Card. Following the installations should be quick and easy. If you run into problems, please refer to the Troubleshooting section. If you need further technical support, please visit www.TRENDNET.com or call technical support by phone.

Verify Package Contents

Please make sure you have everything in the box:

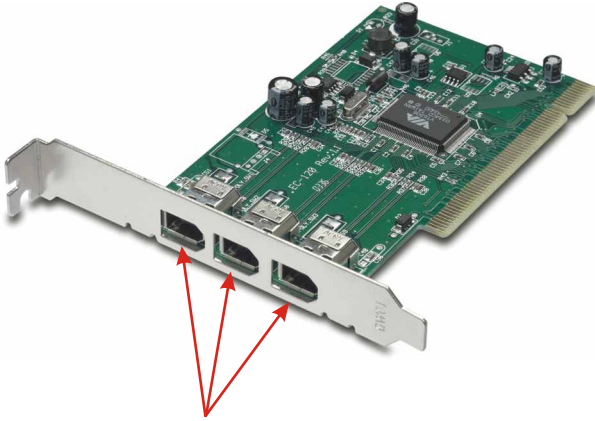


Minimum System Requirements

1. Pentium 233Mhz or faster with at least 64MB RAM
2. Computer with an available 32-bit PCI slot
3. Windows XP, 2000, ME, 98SE or Mac OS 9.0 or later

2. Product Detail

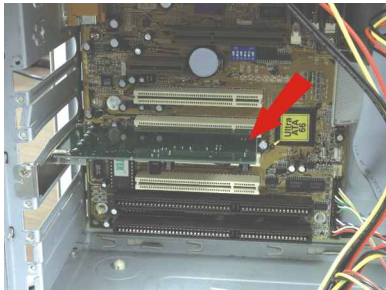
The FireWire PCI Card has 3 FireWire ports.



3 FireWire IEEE1394 Ports for connecting external FireWire peripherals

3. Hardware Installation

1. Shut down your computer.
2. Open your computer case to reveal the motherboard and expansion slots. (Please refer to your computer's user manual if you need help opening the case)
3. Insert the FireWire PCI card into one of motherboard's free PCI slots. Press down firmly and evenly on the card until it snaps into place.



4. Close your computer case, and reboot your computer.

4. Driver Installation

Windows 2000/XP

After your computer reboots, the “Found New Hardware” in Windows XP will appear and automatically detect and install a Windows standard FireWire driver for the TFW-H3PI. For Windows 2000, the installation is fully automatic.

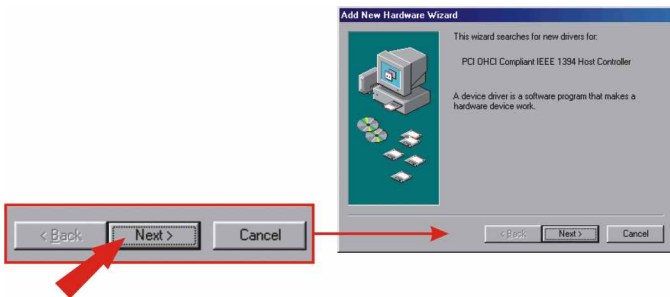
Congratulations!
Installation is now complete.

Note: If you would like to verify the TFW-H3PI has been installed properly for your windows, go to the Verify Installation section.

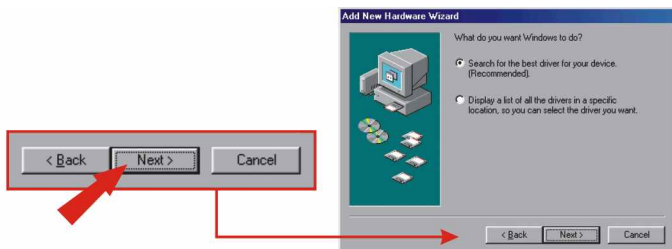
Windows 98SE/ME

After your computer reboots, the “Add New Hardware Wizard” will appear. Windows 98SE/ME will automatically detect and ask you to install a FireWire driver for the TFW-H3PI.

1. Click **Next**.

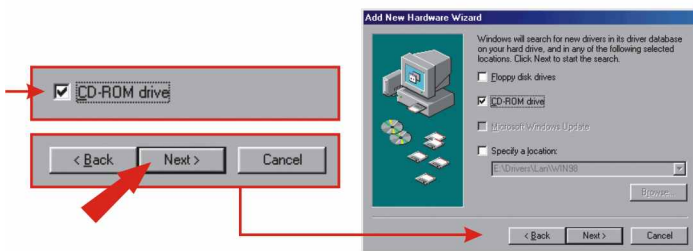


2. Click **Next**.

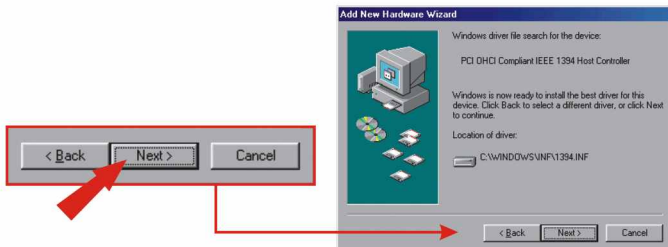


3. Insert the Windows 98SE CD-ROM (or Windows ME CD-ROM if you install for Windows Me) into your computer's CD-ROM drive.

4. Select the **CD-ROM drive** and click **Next**.



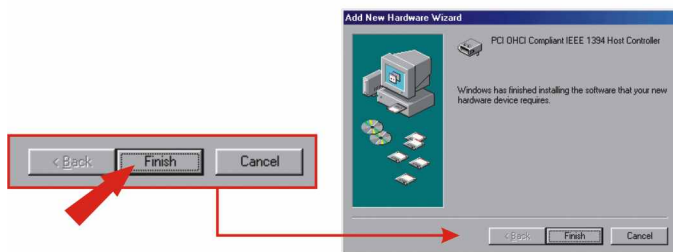
5. Click **Next**.



Note: If you receive a message for inserting Windows 98 CD, click OK and follow the instructions.



6. Driver installation is now complete. Click **Finish**.

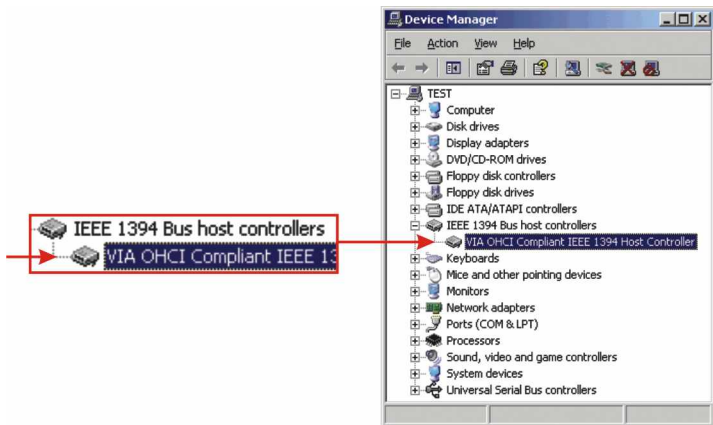


Note: Restart your computer for the new setting to take effect.

5. Verify Installation

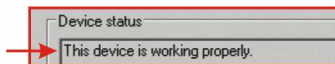
Windows 2000/XP

1. Click **Start**, and then click **Control Panel**.
2. Double-click the **System** icon. On the **Hardware** tab, click **Device Manager** tab.
3. Expand the “IEEE 1394 Bus host controllers” heading to verify that the **VIA OHCI Compliant IEEE 1394 Host Controller** has been installed.



4. Double-click the VIA OHCI Compliant IEEE 1394 Host Controller to open the Properties window.

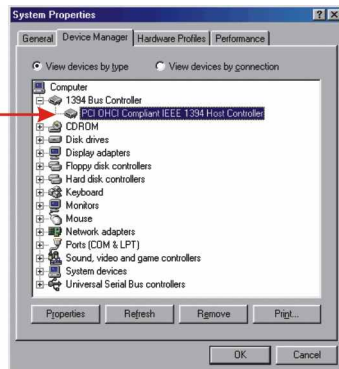
5. Verify that the device status message says **This device is working properly**.



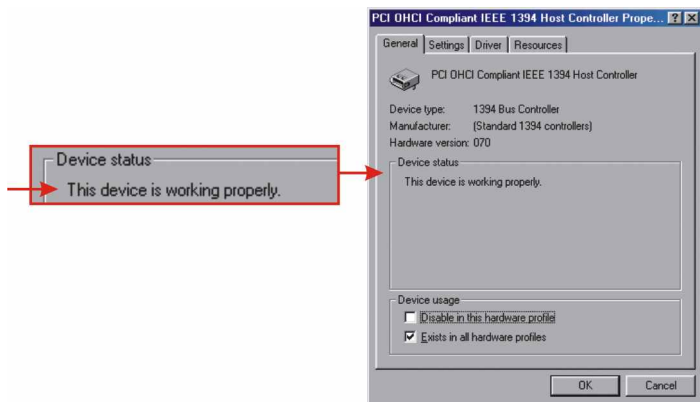
Windows 98SE/ME

1. Click **Start**, click **Settings**, then click on **Control Panel**.
2. Double-click the **System** icon, and click **Device Manager** tab.
3. Expand the “IEEE 1394 Bus host controllers” heading to verify that the **PCI OHCI Compliant IEEE 1394 Host Controller** has been installed.

Note: for Windows ME, the name of the controller is “VIA OHCI Compliant IEEE 1394 Host Controller”.



4. Double-click the **PCI OHCI Compliant IEEE 1394 Host Controller** to open the Properties window.
5. Verify that the device status message says **This device is working properly.**



Q1. Where is the driver diskette or CD-ROM for the TFW-H3PI?

A1. The TFW-H3PI does not require unique drivers for Windows 98SE/ME/2000/XP; it uses Windows standard FireWire driver provided by your operating system.

Q2. Do I need to install the included Video Editing Software for the FireWire PCI Card to work?

A2. No, you don't need to. The software is provided to you as optional.

Q3. Can I connect or disconnect the FireWire cable while the computer is on?

A3. Yes, you can connect or disconnect the FireWire cable, or any external FireWire device while the computer is on, because the FireWire interface is Plug-and-Play and hot-pluggable.

Q4. After successful installation of the TFW-H3PI FireWire PCI Card, I connected my external FireWire device to the FireWire port, but it doesn't seem to work. What should I do?

A4. Make sure you connect your external AC power adapter to the external FireWire device and the device is powered on. Also make sure that you have installed the correct driver for your external FireWire device.

If you have any questions regarding the TFW-H3PI FireWire PCI Card, please contact Trendware Technical Support Department.

FCC Warning

This equipment has been tested and found to comply with the regulations for a Class B digital device, pursuant to Part 15 of the FCC Rules. These limits are designed to provide reasonable protection against harmful interference when the equipment is operated in a commercial environment. This equipment generates, uses, and can radiate radio frequency energy and, if not installed and used in accordance with this user's guide, may cause harmful interference to radio communications. Operation of this equipment in a residential area is likely to cause harmful interference, in which case the user will be required to correct the interference at his own expense.

CE Mark Warning

This is a Class B product. In a domestic environment, this product may cause radio interference, in which case the user may be required to take adequate measures.

VCCI Mark Warning

注意

この装置は、情報処理装置等電波障害自主規制協議会 (VCCI) の基準に基づく第一種情報技術装置です。この装置を家庭環境で使用すると電波妨害を引き起こすことがあります。この場合には使用者が適切な対策を講ずるよう要求されることがあります。

Contact Technical Support

Telephone: +1-310-626-6252
Fax: +1-310-626-6267
Website: www.TRENDNET.com
E-mail: support@trendware.com

Technical Support Hours

7:00AM ~ 6:00PM, Monday through Friday
Pacific Standard Time (except holidays)

TRENDnet[®]

TRENDware, USA

What's Next in Networking

Product Warranty Registration

Please take a moment to register your product online.
Go to TRENDware's website at <http://www.TRENDNET.com>

TRENDware International, Inc.
3135 Kashiwa Street
Torrance, CA 90505

<http://www.TRENDNET.com>