

# TFM-PCIV92A

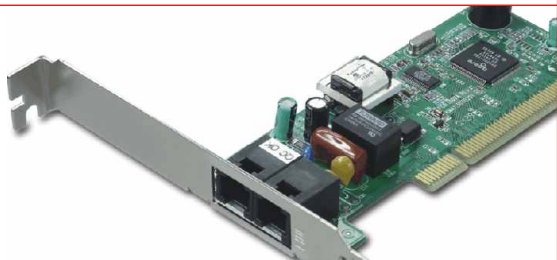
**56K (V.92) High Speed Internal PCI Data/Fax/Voice Modem  
Quick Installation Guide**

**Guide d'installation rapide pour le  
Modem interne PCI Données/Fax/Voix à 56K (V.92) haut débit**

**Anleitung zur Schnellinstallation des  
internen Hochgeschwindigkeits-PCI-Data/Fax/Voice-Modem mit 56K (V.92)**

**Guía de Instalación Rápida para  
Módem de Data/Fax/Voz PCI Interno de alta velocidad a 56K (V.92)**

**Version 09.14.04**



**TRENDnet**<sup>®</sup>  
TRENDware, USA  
**What's Next in Networking**

# Table of Contents

English .....	1
1. Prepare for Installation .....	1
2. Product Detail .....	2
3. Hardware Installation .....	3
4. Driver Installation .....	4
5. Verify Installation .....	12
6. Add a new connection .....	15
Troubleshooting .....	26

# English QIG

## 1. Prepare for Installation

Thank you for purchasing the TRENDnet TFM-PCIV92A 56K (V.92) High Speed Internal PCI Data/Fax/Voice Modem.

This guide will help you set-up your 56K (V.92) High Speed Internal PCI Data/Fax/Voice Modem. Following the installations should be quick and easy. If you run into problems, please refer to the Troubleshooting section. If you need further technical support, please visit [www.TRENDNET.com](http://www.TRENDNET.com) or call technical support by phone.

### Verify Package Contents

Please make sure you have everything in the box:

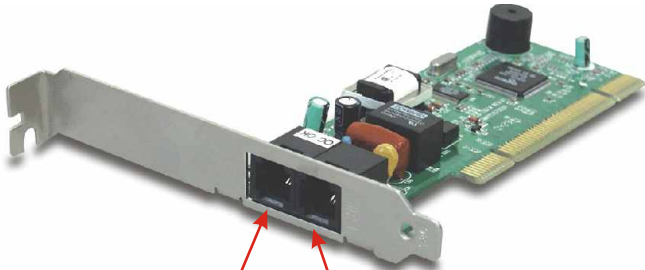


### Minimum System Requirements

1. Pentium 266Mhz or faster processor with at least 32MB of RAM
2. At least 4MB of Hard Drive Space
3. A system with an available 32-bit PCI slot
4. Windows XP, 2000, ME, or 98SE

## 2. Product Detail

56K (V.92) High Speed Internal PCI Data/Fax/Voice Modem has one port (LINE) that connects to the Internet and a second port to connect to a phone.



Plug telephone into this port

Plug telephone cord from this port into the phone jack

## 3. Hardware Installation

1. Be sure to run the software installation **FIRST** before you begin the hardware installation. Please see “**4. Driver Installation**”.
2. Shut down your computer and make sure the power is completely off.
3. Open your computer case to reveal the motherboard and expansion slots. (Please refer to your computer's user manual if you need help opening the case)
4. Insert the TFM-PCIV92A card into one of free PCI slots. Press down firmly and evenly on the card until it snaps into place.



5. Close your computer case, and power up your system.
6. Please go to the specific section for the operating system installed on your system.

# 4. Driver Installation

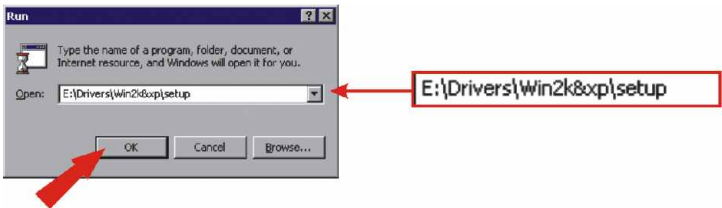
## Windows XP

Please take the CD that came with your TFM-PCIV92A modem, and insert the CD into your CD-ROM drive.

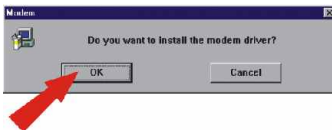
1. The **BVRP LOADER** will appear on your screen. Close this window by clicking **x**.



2. Click on the **Start** button and click on the **Run** icon. In the text box, type in **E:\Drivers\Win2k&xp\setup** and click **OK**. If the letter of your CD-ROM is different from **E**, use the letter that your CD-ROM uses (such as **D**).



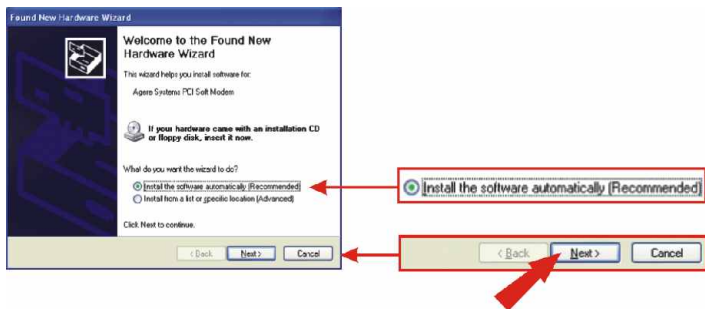
3. Click **OK**.



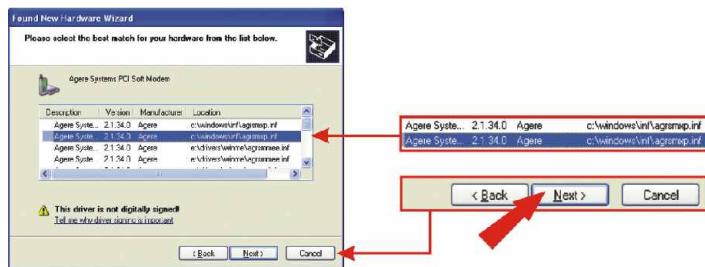
4. Your computer will now install preliminary software to help Windows recognize the drivers for the TFM-PCIV92A modem. After the completion of this installation, please shut down your computer, and follow the hardware installation instructions that are found in this guide (**3. Hardware Installation**). After you have inserted your modem, go to the next step (Step 5) to install the drivers. **LEAVE THE CD IN YOUR CD-ROM DRIVE.**



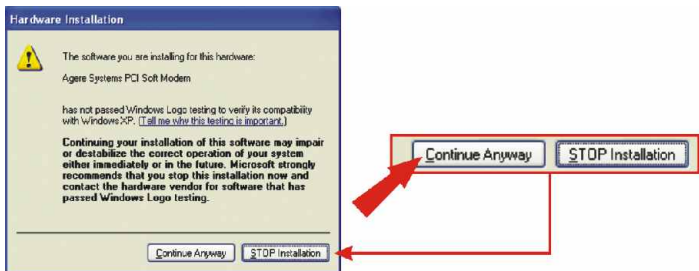
5. Click the **“Install the software automatically (Recommended)”** option, and click **Next**.



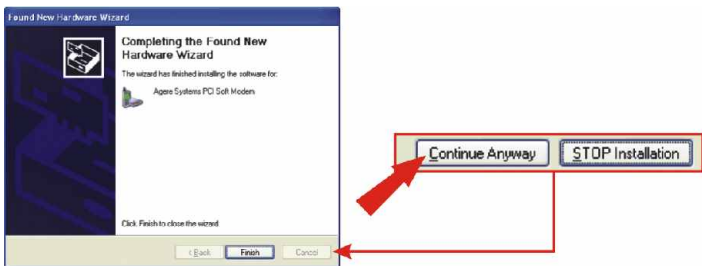
6. Select the location of your driver as mentioned in the picture above, and click **Next**.



7. NOTE: TRENDnet's TRENDnet TFM-PCIV92A 56K (V.92) has been fully tested under all supported Windows Operating Systems and has been approved for their functionality. For Windows XP, you will see a message regarding "not passed Windows Logo testing". Click **Continue Anyway**.



8. Click **Finish**.



**Congratulations!**  
Installation is now complete.

**NOTE:** If you would like to verify that the TFM-PCIV92A has been installed properly for your windows, go to the **Verify Installation section**. If you want to add the Internet connection manually, go to the **Add a New Connection section**.



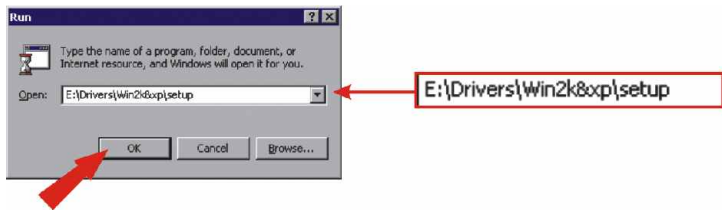
## Windows 2000

Please take the CD that came with your TFM-PCIV92A modem, and insert the CD into your CD-ROM drive.

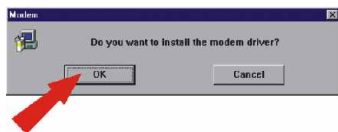
1. The **BVRP LOADER** will appear on your screen. Close this window by clicking **x**.



2. Click on the **Start** button and click on the **Run** icon. In the text box, type in **E:\Drivers\Win2k&xp\setup** and click **OK**. If the letter of your CD-ROM is different from **E**, use the letter that your CD-ROM uses (such as **D**).



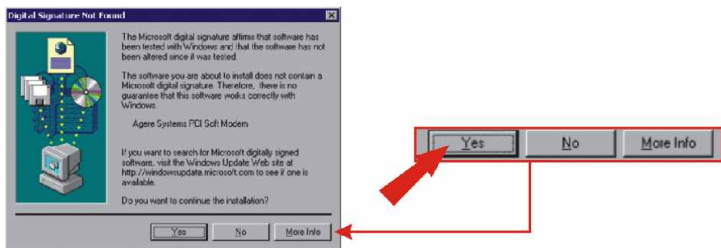
3. Click **OK**.



4. Your computer will now install preliminary software to help Windows recognize the drivers for the TFM-PCIV92A modem. After the completion of this installation, please shut down your computer, and follow the hardware installation instructions that are found in this guide (**3. Hardware Installation**). After you have inserted your modem, go to the next step (Step 5) to install the drivers. **LEAVE THE CD IN YOUR CD-ROM DRIVE.**



5. Click **Yes**.



**Congratulations!**  
Installation is now complete.

**NOTE:** If you would like to verify that the TFM-PCIV92A has been installed properly for your windows, go to the **Verify Installation section**. If you want to add the Internet connection manually, go to the **Add a New Connection section**.

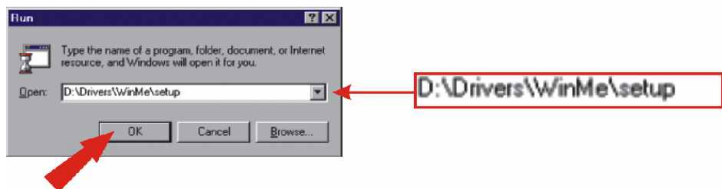
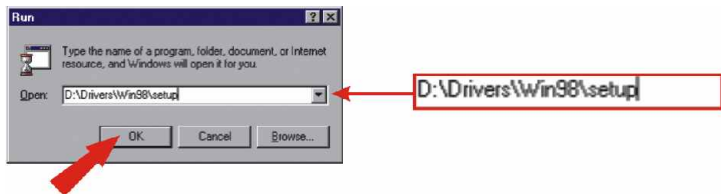
## Windows 98SE/ME

Please take the CD that came with your TFM-PCIV92A modem, and insert the CD into your CD-ROM drive.

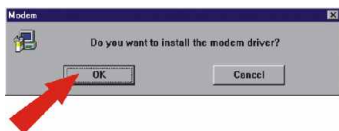
1. The **BVRP LOADER** will appear on your screen. Close this window by clicking **x**.



2. Click on the **Start** button and click on the **Run** icon. In the text box, type in **D:\Drivers\Win98\setup** for Windows 98 and click **OK**. For Windows Me, type in **D:\Drivers\WinMe\setup**. If the letter of your CD-ROM is different from D, use the letter that your CD-ROM uses (such as E).



3. Click **OK**.



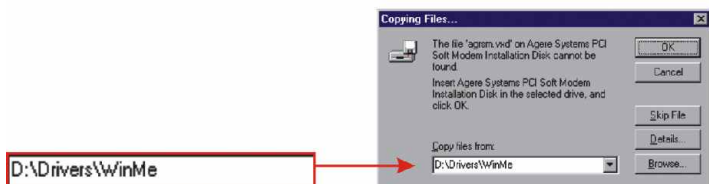
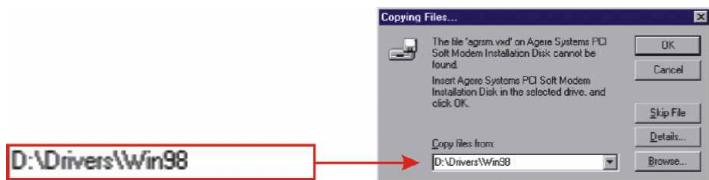
4. Your computer will now install preliminary software to help Windows recognize the drivers for the TFM-PCIV92A modem. After the completion of this installation, please shut down your computer, and follow the hardware installation instructions that are found in this guide (**3. Hardware Installation**). After you have inserted your modem, go to the next step (Step 5) to install the drivers. **LEAVE THE CD IN YOUR CD-ROM DRIVE.**



5. If you left the CD in your CD-ROM drive, then click **OK**.



6. A “New Hardware Found” window will show on your display. Afterwards, you will receive a window prompt that will ask for the location of the modem’s drivers. For Windows 98, type in **D:\Drivers\Win98** in the text box, and click **OK**. For Windows Me, type in **D:\Drivers\WinMe** in the text box, and click **OK**. Again, if the letter of your CD-ROM is different from **D**, use the other letter (such as **E**).



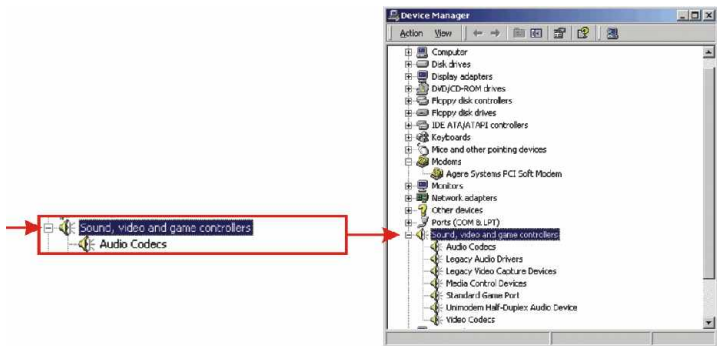
**Congratulations!**  
Installation is now complete.

**NOTE:** If you would like to verify that the TFM-PCIV92A has been installed properly for your windows, go to the **Verify Installation section**. If you want to add the Internet connection manually, go to the **Add a New Connection section**.

# 5. Verify Installation

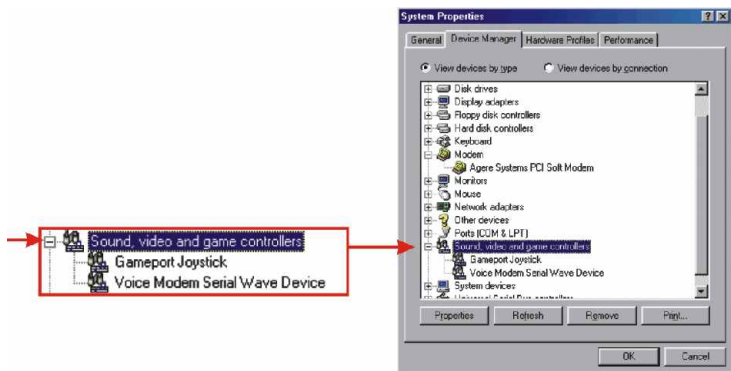
## Windows XP/2000

1. Click **Start**, and then click **Control Panel**.
2. Double-click the **System** icon. On the **Hardware** tab, click **Device Manager** button.
3. Expand the “Modems” heading to verify that the **Agere Systems PCI Soft Modem** has been installed.
4. Expand the “Sound, video and game controllers” heading to verify that the **Unimodem Half-Duplex Audio Device** has been installed.



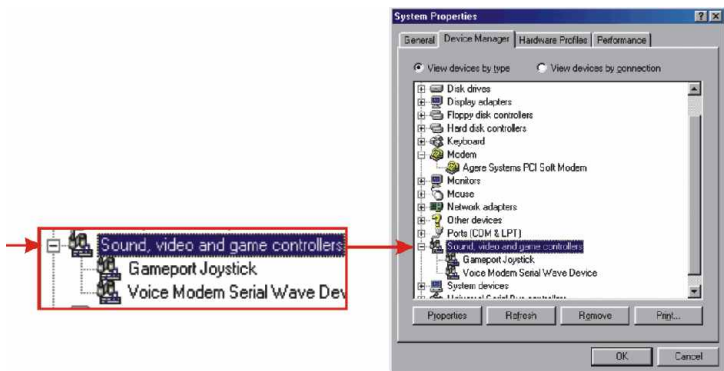
## Windows ME

1. Click **Start**, highlight **Settings**, and then click on **Control Panel**.
2. Double-click the **System** icon, and click **Device Manager** tab.
3. Expand the “Modems” heading to verify that the **Agere Systems PCI Soft Modem** has been installed.
4. Expand the “Sound, video and game controllers” heading to verify that the **Unimodem Half Duplex Wave Device** has been installed.



## Windows 98SE

1. Click **Start**, highlight **Settings**, and then click on **Control Panel**.
2. Double-click the **System** icon, and click **Device Manager** tab.
3. Expand the “Modems” heading to verify that the **Agere Systems PCI Soft Modem** has been installed.
4. Expand the “Sound, video and game controllers” heading to verify that the **Video Modem Serial Wave Device** has been installed.

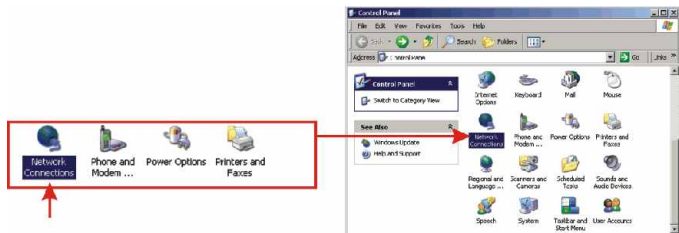




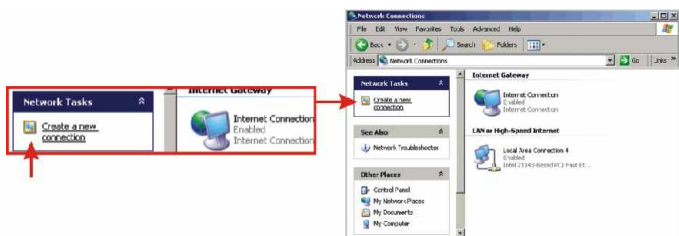
# 6. Add a new connection

## Windows XP

1. Go to your Control Panel and double click on **Network Connections**.



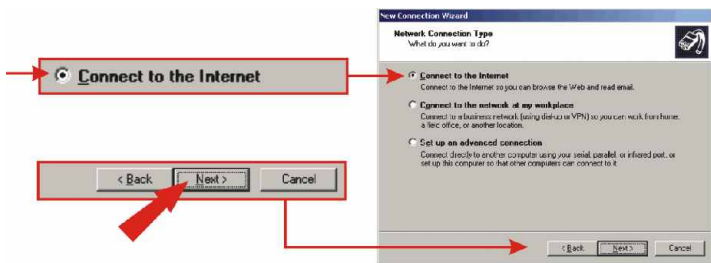
2. Click on **Create a new connection**.



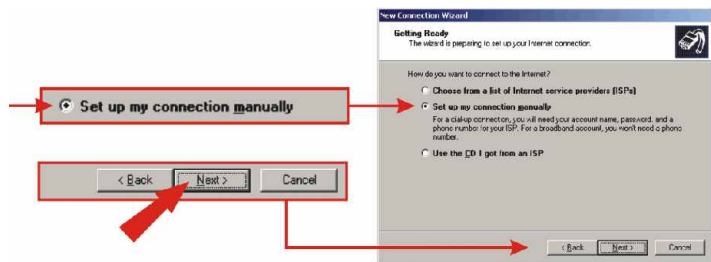
3. The "New Connection Wizard" appears. Click **Next**.



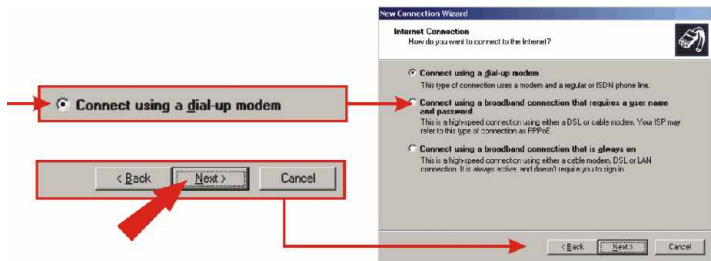
4. Select “Connect to the Internet” and click **Next**.



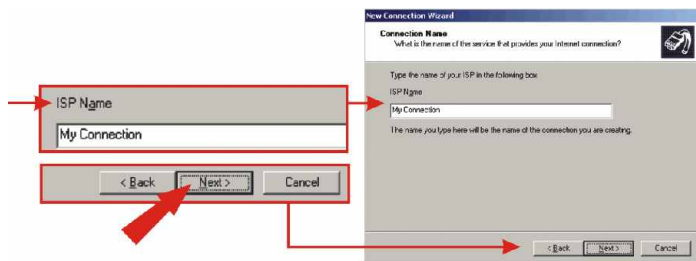
5. Select “Set up my connection manually” and click **Next**.



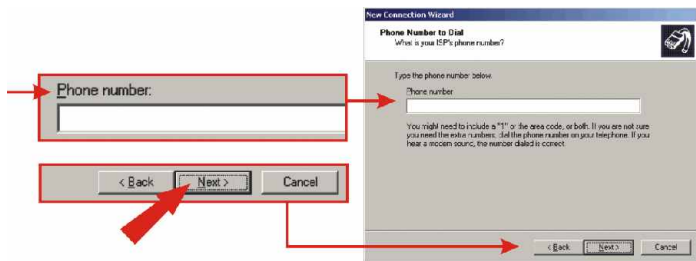
6. Select “Connect using a dial-up modem” and click **Next**.



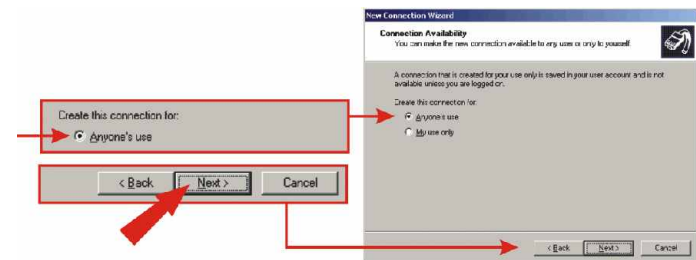
7. Type in a name and click **Next**.



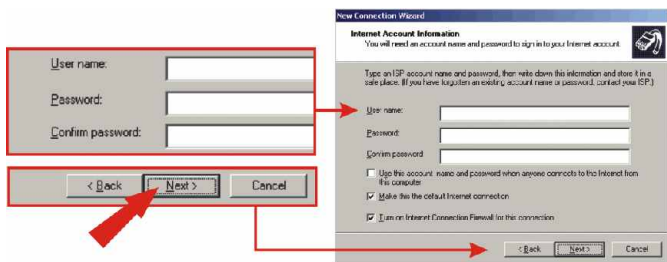
8. Type in the appropriate information and click **Next**.



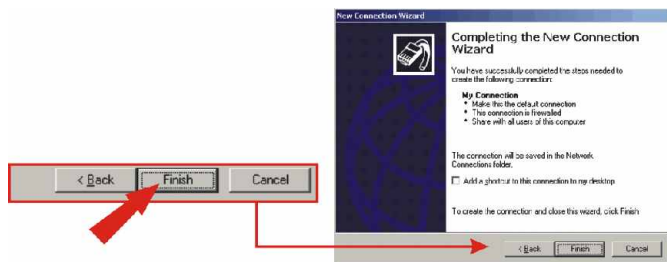
9. Choose the appropriate selection and click **Next**.



10. Type in the required information and click **Next**.

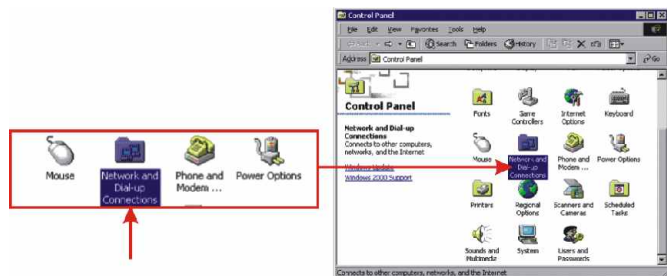


11. Click **Finish**.

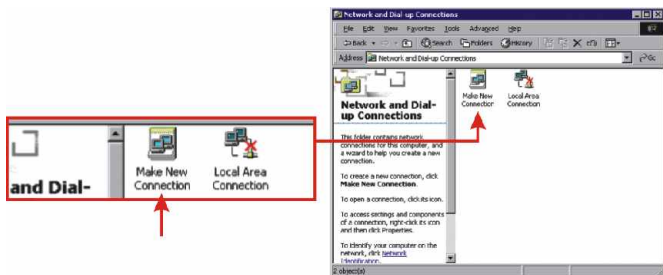


## Windows 2000

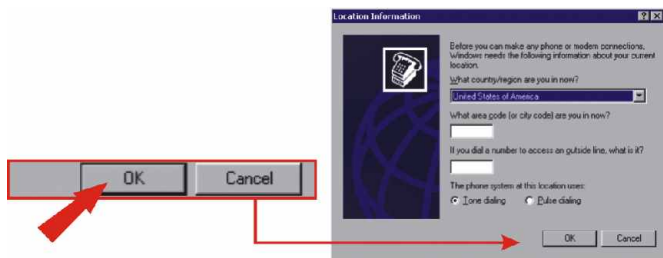
1. Go to the Control Panel and double click on **Network and Dial-up Connections**.



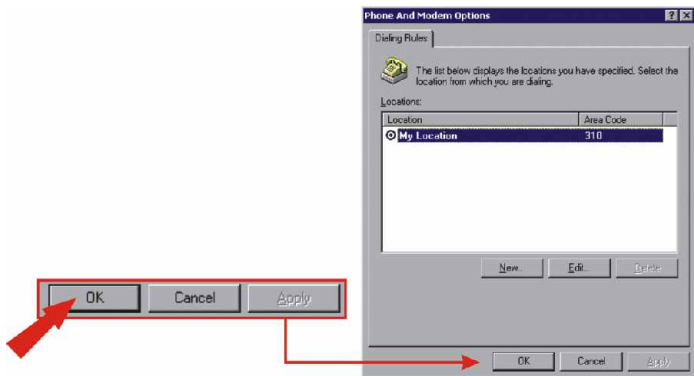
## 2. Double click on **Make New Connection**.



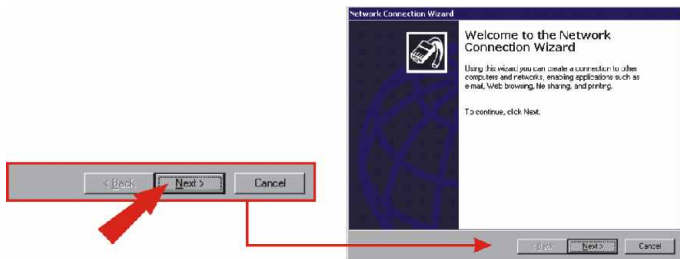
## 3. Type in the appropriate information and click **OK**.



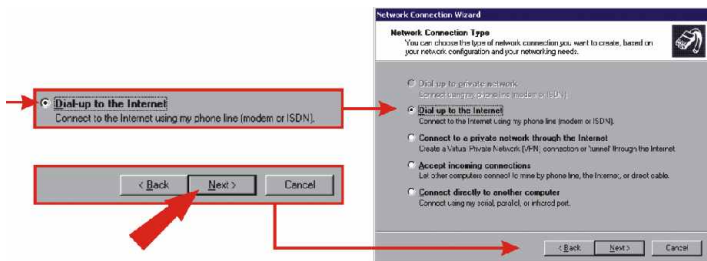
## 4. Click **OK**.



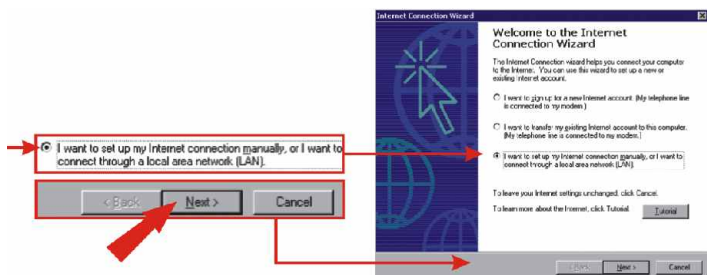
## 5. Click Next.



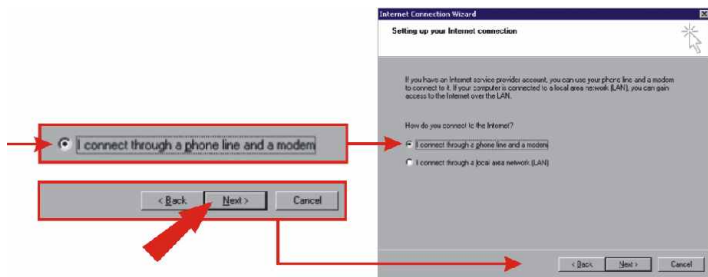
## 6. Select "Dial-up to the Internet", and then click Next.



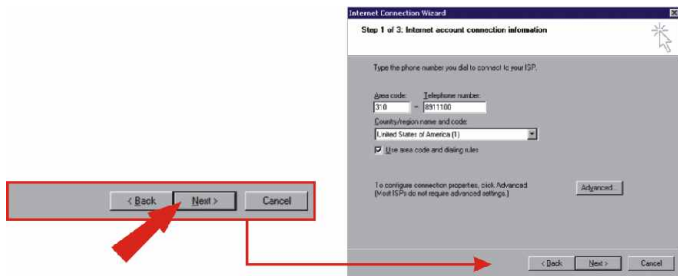
## 7. Select "I want to set up my Internet connection manually, or I want to connect through a local area network (LAN)", and then click Next.



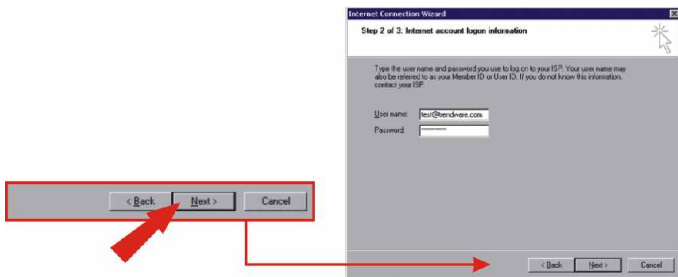
8. Select “I connect through a phone line and a modem”, and then click **Next**.



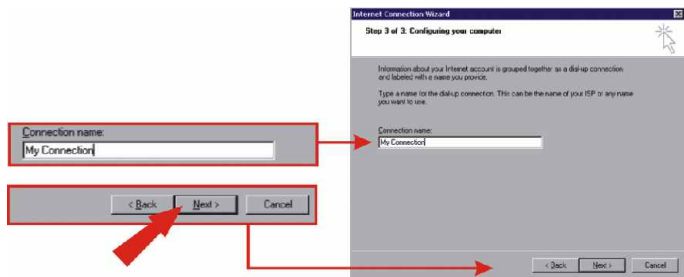
9. Type in the appropriate information, and then click **Next**.



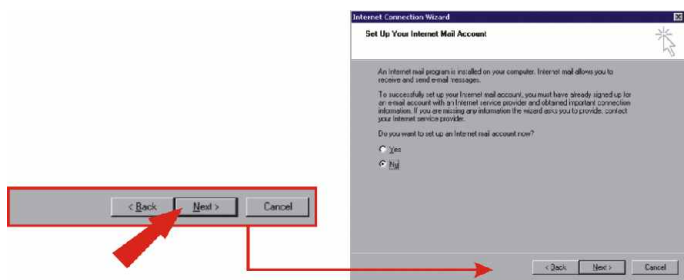
10. Type in the appropriate information, and then click **Next**.



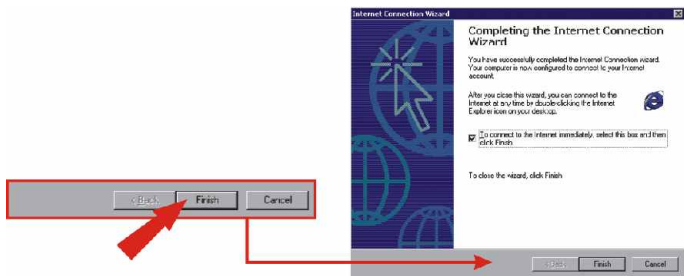
## 11. Click Next.



## 12. Click Next.



## 13. Click Finish.



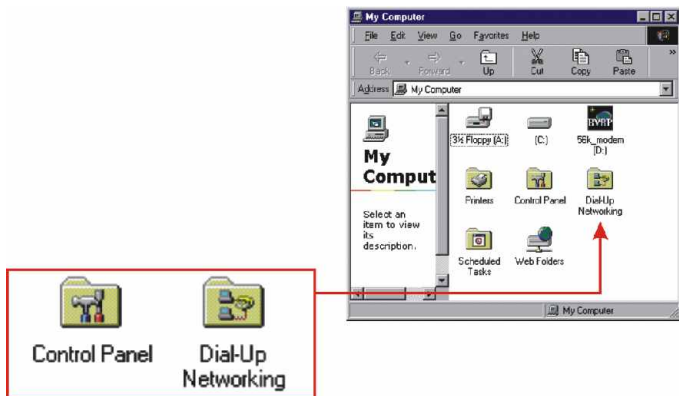


14. Click **Connect**.

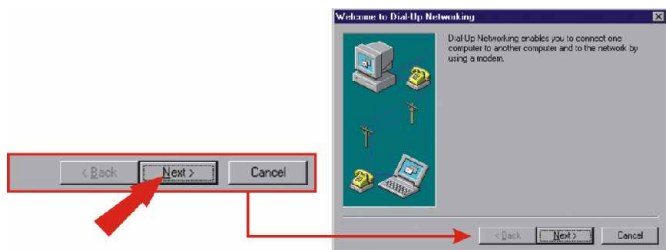


## Windows 98SE/ME

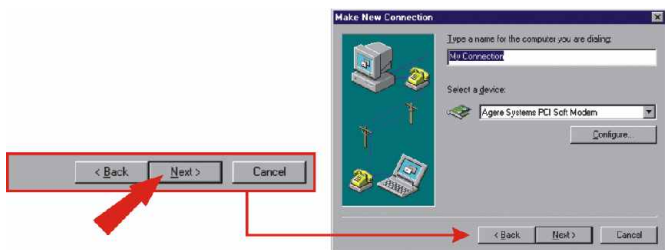
1. Double click on **My Computer**, and then double click on **Dial-up Networking**.



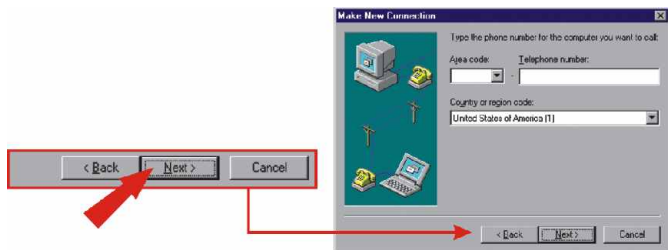
## 2. Click Next.



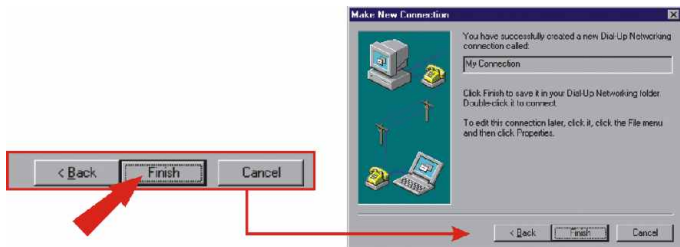
## 3. Click Next.



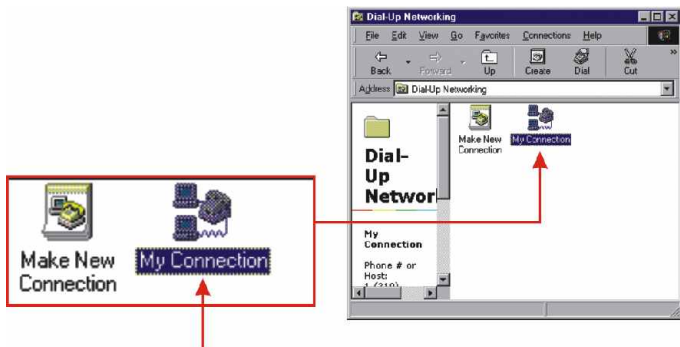
## 4. Type in the appropriate information and click Next.



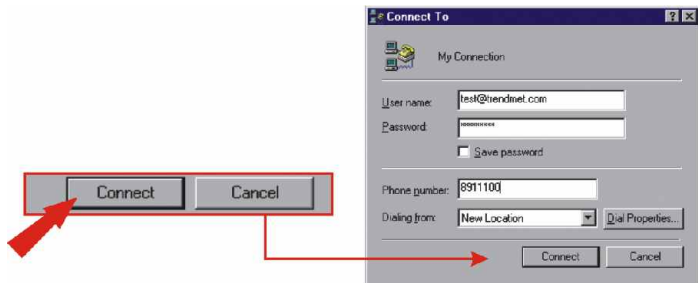
5. Click **Finish**.



6. Double click on the connection icon.



7. Click **Connect**.



# Troubleshooting

## **Q1. After I physically put in the modem, the computer does not detect the modem?**

**A1.** Make sure the computer meets the minimum system requirements as shown at the beginning of this quick installation guide. Also try putting the modem into a different PCI slot.

## **Q2. After successful installation of the TFM-PCIV92A 56K (V.92) High Speed Internal PCI Data/Fax/Voice Modem, I try to connect to the internet but I get no dial tone. What should I do?**

**A2.1.** Ensure that the telephone cord is securely connected at both modem and wall outlet.

2. Unplug the telephone cord from the computer and connect it directly to a telephone from the wall outlet. Check for a dial tone. If there is none, the problem is in the telephone cord or system. Call your telephone service provider.

3. Double-check your country setting. Different country setting will cause different modem performance. Please select the correct country as you located.

4. Check modem performance with a direct line from your telephone company. Some PBXs may cause the telephone line condition change and affect modem performance.

If you have any questions regarding the TFM-PCIV92A 56K (V.92) High Speed Internal PCI Data/Fax/Voice Modem, please contact Trendware Technical Support Department.

### **Certifications**

This equipment has been tested and found to comply with Part 15 of the FCC Rules. Operation is subject to the following two conditions:

- (1) This device may not cause harmful interference.
- (2) This device must accept any interference received.  
Including interference that may cause undesired operation.

This equipment is in compliance with the requirements of the following regulations: EN 55 022: CLASS B



### **Contact Technical Support**

Telephone: +1-310-626-6252  
Fax: +1-310-626-6267  
Website: [www.TRENDNET.com](http://www.TRENDNET.com)  
E-mail: [support@trendware.com](mailto:support@trendware.com)

### **Technical Support Hours**

7:00AM ~ 6:00PM, Monday through Friday  
Pacific Standard Time (except holidays)

# TRENDnet<sup>®</sup>

TRENDware, USA

**What's Next in Networking**

## **Product Warranty Registration**

Please take a moment to register your product online.  
Go to TRENDware's website at <http://www.TRENDNET.com>

**TRENDware International, Inc.**  
3135 Kashiwa Street  
Torrance, CA 90505

**<http://www.TRENDNET.com>**