

Quick Installation Guide



TFM-PCIV92A

Table of Contents

English	1
1. Before You Start	1
2. How to Install	2
3. Verify Installation	5
Troubleshooting	6

1. Before You Start



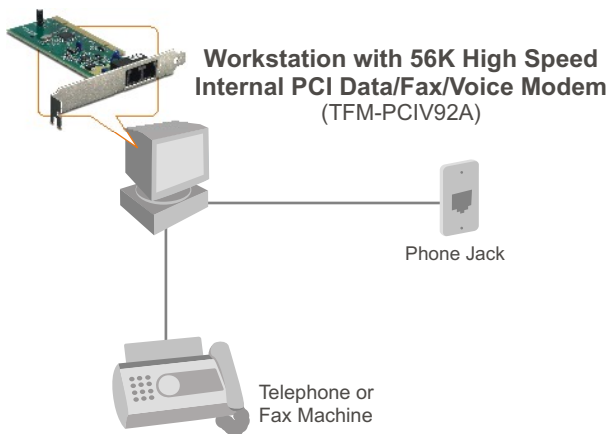
Package Content

- TFM-PCIV92A
- Driver CD-ROM
- Quick Installation Guide
- 1 x RJ-11 Cable

System Requirements

- Computer with an available PCI slot Version 2.2
- CPU: Intel Pentium III Processor 260Mhz or above
- Memory: 32MB or above
- Hard Drive Space: 4MB or above
- Windows 2003 server/XP/2000/ME/98(SE)

Application



2. How to Install

Important! DO NOT install the TFM-PCIV92A in the computer until instructed to do so.

Windows 2000/XP

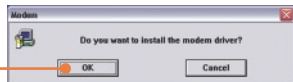
1. After inserting the **Driver CD-ROM**, the installation menu appears. Click **Install Modem driver**.



2. Click **Windows 2000 & XP**.



3. Click **OK**.



4. The progress window appears.



5. After the progress window disappears, close the installation menu. Click **X**.



Note: You must leave the Driver CD-ROM in your computer's CD-ROM Drive before following the instructions below. Please refer to your computer's user manual regarding hardware installation.

6. Turn **OFF** computer and peripherals, and then disconnect all cables.

7. Open your computer's case.



8. Insert PCI Card firmly into free PCI Card slot of desktop PC, replace the computer's case, and then reconnect your computer's cables.



9. Connect a telephone wire from the modem's LINE port to a phone jack.



10. Turn **ON** your computer and wait until the Windows desktop appears.



The Installation for TFM-PCIV92A is Now complete.

For detailed information regarding the TFM-PCIV92A configuration and advanced settings, please refer to the User's Guide CD-ROM or TRENDnet's website at www.trendnet.com.

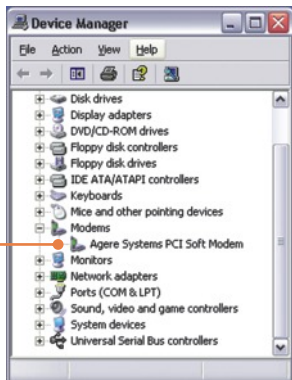
3. Verify Installation

Windows 2000/XP

1. Right-click **My Computer** and click **Properties**. Under the Hardware tab, click **Device Manager**.



2. Expand the "Modems" heading to verify that the **Agere Systems PCI Soft Modem** has been installed and that no question marks or exclamation points are visible.



Q1: I installed the modem into my computer's PCI Card slot and my computer does not detect the modem. What should I do?

A1: Make sure the computer meets the minimum system requirements and that the modem is properly inserted in the PCI slot. You may also try installing the modem into a different PCI slot.

Q2: Does the modem connect to the computer's sound card via an internal cable?

A2: The TFM-PCIV92A does not require an internal audio/microphone cable.

Q3: After successful installation of the TFM-PCIV92A, I tried to connect to the Internet but I do not get a dial tone. What should I do?

A3.1: Unplug the telephone wire from the computer, and check for a dial tone by connecting the telephone wire directly from the wall outlet to a telephone. If there is no dial tone, then the problem is in your telephone wire or telephone system. Call your telephone service provider for assistance. If there is a dial tone, reconnect the cables to the modem and verify that the telephone cord is securely connected at the modem and phone jack.

A3.2: The TFM-PCIV92A does not have an internal speaker. Make sure that your sound card is properly installed and that your speakers are turned on. Also check that your sound card is not set to mute.

A3.3: If a PBX or other phone system is installed, check modem performance with a direct line from your telephone company. Some PBX may cause the telephone line condition change and effect modem performance.

If you still encounter problems or have any questions regarding the TFM-PCIV92A, please refer to the User's Guide included on the Driver CD-ROM or contact Trendnet's Technical Support Department.

Certifications

This equipment has been tested and found to comply with FCC and CE Rules.

Operation is subject to the following two conditions:

- (1) This device may not cause harmful interference.
- (2) This device must accept any interference received. Including interference that may cause undesired operation.



Waste electrical and electronic products must not be disposed of with household waste. Please recycle where facilities exist. Check with you Local Authority or Retailer for recycling advice.



NOTE: THE MANUFACTURER IS NOT RESPONSIBLE FOR ANY RADIO OR TV INTERFERENCE CAUSED BY UNAUTHORIZED MODIFICATIONS TO THIS EQUIPMENT. SUCH MODIFICATIONS COULD VOID THE USER'S AUTHORITY TO OPERATE THE EQUIPMENT.

ADVERTENCIA

En todos nuestros equipos se mencionan claramente las características del adaptador de alimentación necesario para su funcionamiento. El uso de un adaptador distinto al mencionado puede producir daños físicos y/o daños al equipo conectado. El adaptador de alimentación debe operar con voltaje y frecuencia de la energía eléctrica domiciliar existente en el país o zona de instalación.



TRENDnet[®]

TRENDnet Technical Support

US • Canada

Toll Free Telephone: 1(866) 845-3673

24/7 Tech Support



Europe (Germany • France • Italy • Spain • Switzerland • UK)

Toll Free Telephone: +00800 60 76 76 67

English/Espanol - 24/7

Francais/Deutsch - 11 am-8pm, Monday - Friday MET

Worldwide

Telephone: +(31) (0) 20 504 05 35

English/Espanol - 24/7

Francais/Deutsch - 11 am-8pm, Monday - Friday MET

Product Warranty Registration

Please take a moment to register your product online.

Go to TRENDnet's website at <http://www.trendnet.com>

TRENDnet[®]

20675 Manhattan Place

Torrance, CA 90501

USA