


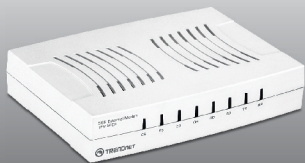


Guía de instalación rápida 

TFM-560X
YO.13

Table of Contents

Español	1
1. Antes de iniciar	1
2. Cómo se instala	2
<hr/>	
Troubleshooting	6



Contenidos del paquete

- TFM-560X
- CD-ROM (herramienta y guía del usuario)
- Guía de instalación rápida multilingüe
- 1 x cable telefónico RJ11
- 1 x Cable serial RS-232
- Adaptador de alimentación (9V AC, 1A)

Requisitos del sistema

- Unidad de CD-ROM
- RS-232 COM port
- Disco duro: 4MB o más

Compatible con sistemas operativos	CPU	Memoria
Windows 7 (32/64-bit)	1GHz o superior	1GB RAM o superior
Windows Vista (32/64-bit)	800MHz o superior	512MB RAM o superior
Windows XP (32/64-bit) / 2000 / ME / 98SE	300MHz o superior	256MB RAM o superior

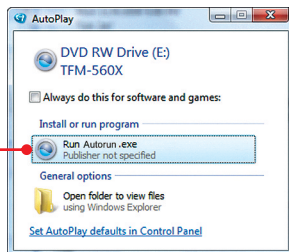
2. Cómo se instala

Nota:

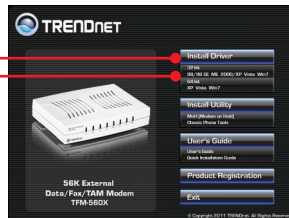
Nota: Consulte la Guía del Usuario en el CD-ROM del controlador para las instrucciones de instalación de Windows 98SE y Windows ME

1. Inserte el **CD-ROM del controlador** en su unidad de CD-ROM.

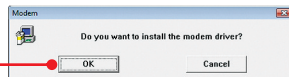
2. Haga clic en **Run Autorun.exe** (sólo para Windows 7/Vista).



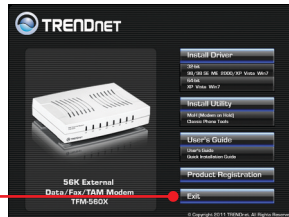
3. Haga clic en **instalar el controlador** (Install Driver) y entonces seleccione su sistema operativo.



4. Haga clic en **OK**.



5. Haga clic en Salir para cerrar la ventana de instalación.



6. Apague su PC.

7. Conecte la parte macho del cable RS-232 al TFM-560X. Luego conecte la parte hembra del cable RS-232 al puerto COM de su PC.



8. Conecte un extremo del cable de teléfono RJ-11 al puerto de Línea del Módem, y después conecte el otro extremo al jack telefónico.

9. Conecte el adaptador de alimentación AC al módem y luego a una toma de corriente.

10. Encienda el módem.

11. Conecte su teléfono al puerto de teléfono (opcional).

12. Encienda el PC.

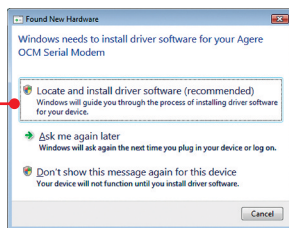


Nota:

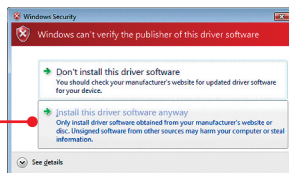
Para Windows 7/2000, los controladores se instalarán de manera automática. Se ha completado la instalación del controlador para Windows 7/2000. Para Windows Vista vaya al paso 13. Para Windows XP vaya al paso 15.

Windows Vista

13. Haga clic en **Locate and install driver software** (Recomendado).



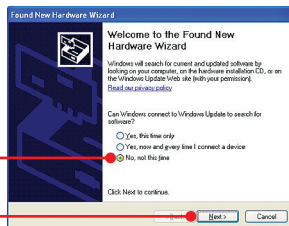
14. Haga clic en **Install this driver software anyway** (Instalar el software de este controlador de todas formas).



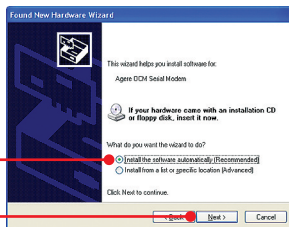
Noa: Se ha completado la instalación del controlador para Windows Vista.

Windows XP

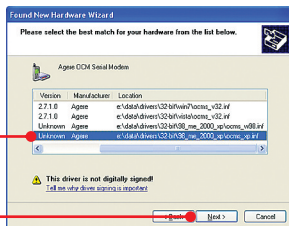
15. Seleccione **No** y haga clic en **Next** (Siguiente).



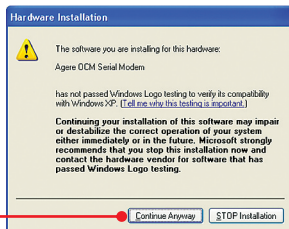
16. Seleccione **Install the software automatically** (Instalar el software automáticamente) (Recommended) y luego pulse **Next** (Siguiente).



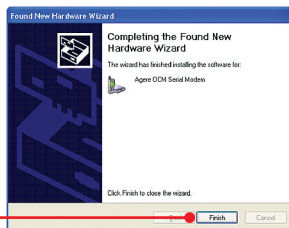
17. Seleccione los controladores de Windows XP y haga clic en **Siguiente**.



18. Haga clic en **Continue Anyway** (Continuar de todas formas).



19. Haga clic en **Finish** (Finalizar).



Nota: Se ha completado la instalación del controlador para Windows XP.

1. I inserted the Driver CD-ROM into my computer's CD-ROM Drive but the installation menu does not appear automatically. What should I do?

1. For Windows 7, if the installation menu does not appear automatically, click on the Windows Icon on the bottom left hand corner of the screen., click the "Search programs and files" box, and type D:\Autorun.exe, where "D" in "D:\Autorun.exe" is the letter assigned to your CD-ROM Drive, and then press the ENTER key on your keyboard.
2. For Windows Vista, if the installation menu does not appear automatically, click Start, click the Start Search box, and type D:\Autorun.exe where "D" in "D:\Autorun.exe" is the letter assigned to your CD-ROM Drive, and then press the ENTER key on your keyboard.
3. For Windows XP/2000, if the window does not appear automatically, click Start, click Run and type D:\Autorun.exe where "D" in "D:\Autorun.exe" is the letter assigned to your CD-ROM Drive, and then press the ENTER key on your keyboard.

2. I connected the modem to my computer's COM/RS-232 port and my computer does not detect the modem? What should I do?

1. Make sure the computer meets the minimum system requirements as shown at the beginning of this quick installation guide.
2. Verify that the modem is properly connected to the computer's RS-232 port.
3. Try connecting the modem into a different RS-232 port.

3. After successful installation of the TFM-560X, I tried to connect to the Internet but I do not get a dial tone. What should I do?

1. Unplug the telephone wire from the computer, and check for a dial tone by connecting the telephone cable directly from the wall outlet to a telephone. If there is no dial tone, then the problem is in your telephone cable or telephone system. Call your telephone service provider for assistance. If there is a dial tone, reconnect cables to the modem and verify that the telephone cable is securely connected to the modem and phone jack.
2. Make sure you are connecting the modem into an analog phone connection. The modem will not work with a digital phone line.
3. Contact your ISP and verify all the information that you have in regards to your Internet connection settings is correct.

4. How do I install the drivers on Windows 98SE or ME?

Please refer to the User's Guide included on the Driver CD-ROM.

5. Do I need to install the Modem on Hold or Classic Phone Tools software programs?

The Modem on Hold or Classic Phone Tools software programs are not required to operate the modem. To use Modem on Hold or Classic Phone Tools, open the program and click on the Help button.

If you still encounter problems or have any questions regarding the **TFM-560X** please contact TRENDnet's Technical Support Department.

Certifications

This equipment has been tested and found to comply with FCC and CE Rules.

Operation is subject to the following two conditions:

- (1) This device may not cause harmful interference.
- (2) This device must accept any interference received. Including interference that may cause undesired operation.



(01)07898431241061

0001-06-2375

Este equipamento opera em caráter secundário, isto é, não tem direito a proteção contra interferência prejudicial, mesmo de estações do mesmo tipo, e não pode causar interferência a sistemas operando em caráter primário



Waste electrical and electronic products must not be disposed of with household waste. Please recycle where facilities exist. Check with you Local Authority or Retailer for recycling advice.



NOTE: THE MANUFACTURER IS NOT RESPONSIBLE FOR ANY RADIO OR TV INTERFERENCE CAUSED BY UNAUTHORIZED MODIFICATIONS TO THIS EQUIPMENT. SUCH MODIFICATIONS COULD VOID THE USER'S AUTHORITY TO OPERATE THE EQUIPMENT.

ADVERTENCIA

En todos nuestros equipos se mencionan claramente las características del adaptador de alimentación necesario para su funcionamiento. El uso de un adaptador distinto al mencionado puede producir daños físicos y/o daños al equipo conectado. El adaptador de alimentación debe operar con voltaje y frecuencia de la energía eléctrica domiciliar existente en el país o zona de instalación.



Product Warranty Registration

Please take a moment to register your product online.
Go to TRENDnet's website at <http://www.trendnet.com/register>