


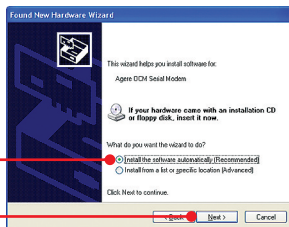
Guide d'installation rapide 

TFM-560X
YO.13

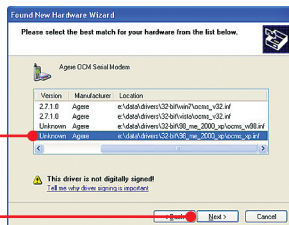
Table of Contents

Français	1
1. Avant de commencer	1
2. Procéder à l'installation	2
.....
Troubleshooting	6

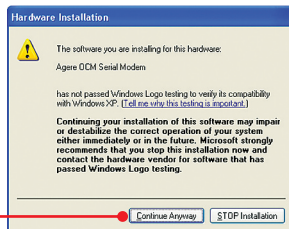
16. Select **Install the software automatically (Recommended)** and then click **Next**.



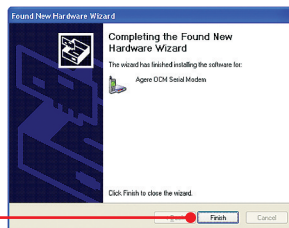
17. Select the Windows XP drivers and then click **Next**.



18. Click **Continue Anyway**.



18. Click **Finish**.



Note: Driver installation for Windows XP is now complete.



Contenu de l'emballage

- TFM-560X
- CD-ROM contenant l'utilitaire et les pilotes
- Guide d'installation rapide en plusieurs langues
- Fil de téléphone RJ-11
- Câble série RS-232
- Adaptateur secteur (9V AC, 1A)

Exigences du système

- Lecteur de CD-ROM
- Port RS-232 COM
- Espace sur le disque dur : 4 MB ou supérieur

SE supportés	Microprocesseur	Mémoire
Windows 7 (32/64-bit)	1GHz ou supérieur	1GB RAM ou supérieur
Windows Vista (32/64-bit)	800MHz ou supérieur	512MB RAM ou supérieur
Windows XP (32/64-bit) / 2000 / ME / 98SE	300MHz ou supérieur	256MB RAM ou supérieur

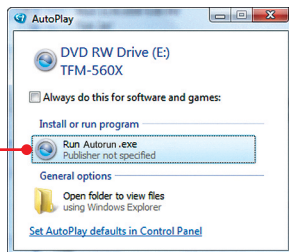
2. Procéder à l'installation

Remarque:

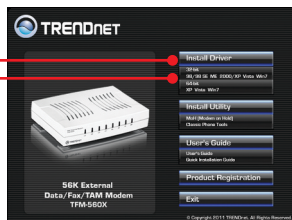
Consultez le Guide de l'utilisateur sur le CD-ROM avec le pilote pour les instructions d'installation sur Windows 98SE et Windows ME.

1. Insérez le **Driver CD-ROM** dans le lecteur de CD-ROM de votre ordinateur.

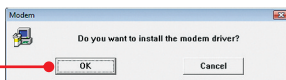
2. Cliquez sur **Run Autorun.exe** (Windows 7/Vista uniquement).



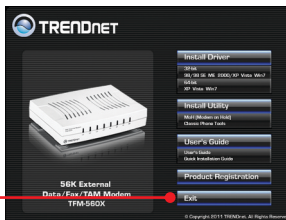
3. Cliquez sur **Installer le driver**, puis sélectionnez votre système d'exploitation.



4. Cliquez sur **OK**.



5. Cliquez sur **Quitter** pour fermer la fenêtre d'installation.



6. Eteignez votre ordinateur.

7. Branchez l'extrémité mâle du câble RS-232 au TFM-560X. Branchez ensuite l'extrémité femelle du câble RS-232 au port COM de votre PC.



8. Branchez une extrémité d'un câble téléphonique RJ-11 au port Line du modem, et branchez ensuite l'autre extrémité à la prise téléphonique.

9. Branchez l'adaptateur secteur au modem et à une prise de courant.

10. Mettez le modem sous tension.

11. Branchez votre téléphone au port téléphone (optionnel).

12. Mettez le PC sous tension.

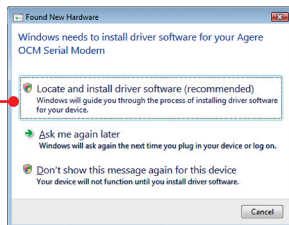


Remarque:

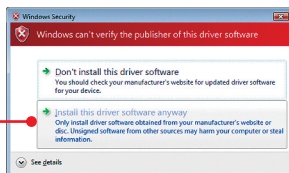
Pour Windows 7/2000, les pilotes s'installeront automatiquement. L'installation du pilote pour Windows 7/2000 est à présent terminée. Pour Windows Vista, passez à l'étape 13. Pour Windows XP, passez à l'étape 15.

Windows Vista

13. Cliquez sur **Locate and install driver software (recommandé)**.



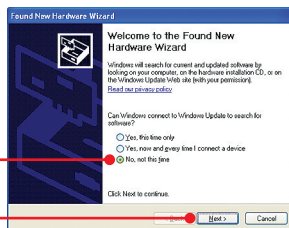
14. Cliquez sur **Install this driver software anyway** (Installer le pilote de ce logiciel de toute façon).



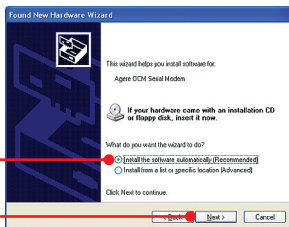
Remarque : L'installation du pilote pour Vista est à présent terminée.

Windows XP

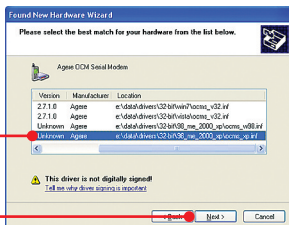
15. Sélectionnez **Non** et cliquez ensuite sur **Next** (Suivant).



16. Sélectionnez **Install the software automatically (Installer le logiciel automatiquement)** et cliquez sur **Next** (Suivant).



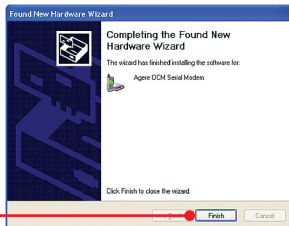
17. Sélectionnez les pilotes Windows XP, puis cliquez sur **Suivant**.



18. Cliquez sur **Continue Anyway** (Continuer malgré tout).



19. Cliquez sur **Finish** (Terminer).



L'installation du pilote pour XP est à présent terminée.

1. I inserted the Driver CD-ROM into my computer's CD-ROM Drive but the installation menu does not appear automatically. What should I do?

1. For Windows 7, if the installation menu does not appear automatically, click on the Windows Icon on the bottom left hand corner of the screen., click the "Search programs and files" box, and type D:\Autorun.exe, where "D" in "D:\Autorun.exe" is the letter assigned to your CD-ROM Drive, and then press the ENTER key on your keyboard.
2. For Windows Vista, if the installation menu does not appear automatically, click Start, click the Start Search box, and type D:\Autorun.exe where "D" in "D:\Autorun.exe" is the letter assigned to your CD-ROM Drive, and then press the ENTER key on your keyboard.
3. For Windows XP/2000, if the window does not appear automatically, click Start, click Run and type D:\Autorun.exe where "D" in "D:\Autorun.exe" is the letter assigned to your CD-ROM Drive, and then press the ENTER key on your keyboard.

2. I connected the modem to my computer's COM/RS-232 port and my computer does not detect the modem? What should I do?

1. Make sure the computer meets the minimum system requirements as shown at the beginning of this quick installation guide.
2. Verify that the modem is properly connected to the computer's RS-232 port.
3. Try connecting the modem into a different RS-232 port.

3. After successful installation of the TFM-560X, I tried to connect to the Internet but I do not get a dial tone. What should I do?

1. Unplug the telephone wire from the computer, and check for a dial tone by connecting the telephone cable directly from the wall outlet to a telephone. If there is no dial tone, then the problem is in your telephone cable or telephone system. Call your telephone service provider for assistance. If there is a dial tone, reconnect cables to the modem and verify that the telephone cable is securely connected to the modem and phone jack.
2. Make sure you are connecting the modem into an analog phone connection. The modem will not work with a digital phone line.
3. Contact your ISP and verify all the information that you have in regards to your Internet connection settings is correct.

4. How do I install the drivers on Windows 98SE or ME?

Please refer to the User's Guide included on the Driver CD-ROM.

5. Do I need to install the Modem on Hold or Classic Phone Tools software programs?

The Modem on Hold or Classic Phone Tools software programs are not required to operate the modem. To use Modem on Hold or Classic Phone Tools, open the program and click on the Help button.

If you still encounter problems or have any questions regarding the **TFM-560X** please contact TRENDnet's Technical Support Department.

Certifications

This equipment has been tested and found to comply with FCC and CE Rules.

Operation is subject to the following two conditions:

- (1) This device may not cause harmful interference.
- (2) This device must accept any interference received. Including interference that may cause undesired operation.



(01)07898431241061

0001-06-2375

Este equipamento opera em caráter secundário, isto é, não tem direito a proteção contra interferência prejudicial, mesmo de estações do mesmo tipo, e não pode causar interferência a sistemas operando em caráter primário



Waste electrical and electronic products must not be disposed of with household waste. Please recycle where facilities exist. Check with you Local Authority or Retailer for recycling advice.



NOTE: THE MANUFACTURER IS NOT RESPONSIBLE FOR ANY RADIO OR TV INTERFERENCE CAUSED BY UNAUTHORIZED MODIFICATIONS TO THIS EQUIPMENT. SUCH MODIFICATIONS COULD VOID THE USER'S AUTHORITY TO OPERATE THE EQUIPMENT.

ADVERTENCIA

En todos nuestros equipos se mencionan claramente las características del adaptador de alimentación necesario para su funcionamiento. El uso de un adaptador distinto al mencionado puede producir daños físicos y/o daños al equipo conectado. El adaptador de alimentación debe operar con voltaje y frecuencia de la energía eléctrica domiciliar existente en el país o zona de instalación.



Product Warranty Registration

Please take a moment to register your product online.
Go to TRENDnet's website at <http://www.trendnet.com/register>