

TEW-PS3 F.A.Q.

Q: Why doesn't PS-Admin utility detect my print server?

A: If you are using Windows XP you will have to disable the built in firewall. But for all operating systems you have to disable any other form of firewall software such as Norton Internet Security, Black Ice, and ZoneAlarm.

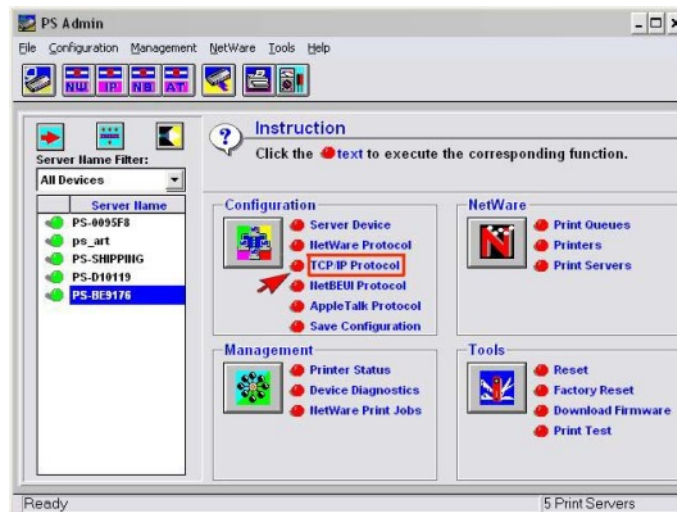
Make sure that you have “Client Services for Netware” installed, it should automatically install IPX/SPX. If not please do so.

Note: Windows XP Home edition does not have the capability to install Client Services for Netware.

Make sure the dip switch is switched over to Ad-Hoc mode on the back of the print server, unplug the electrical power for 15 seconds then plug the power back in.

Q: How do I change the IP address of my print server?

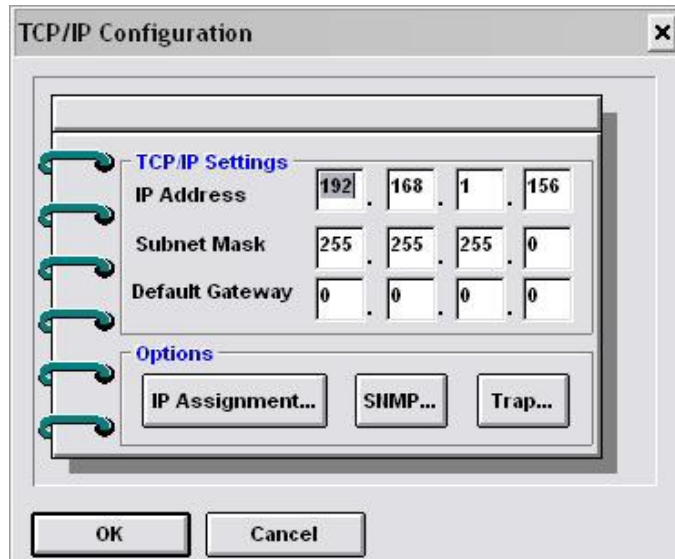
A: Step 1. Open up the PS-Admin Utility and click on “TCP IP Protocol”.



TEW-PS3 F.A.Q.

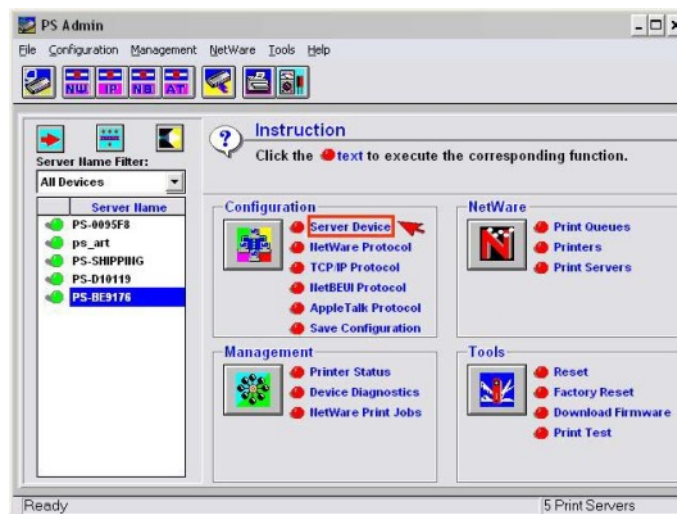
Step 2. Change IP Address:

In this dialog box, you can **Manually Assign**. When completed, click “OK”.



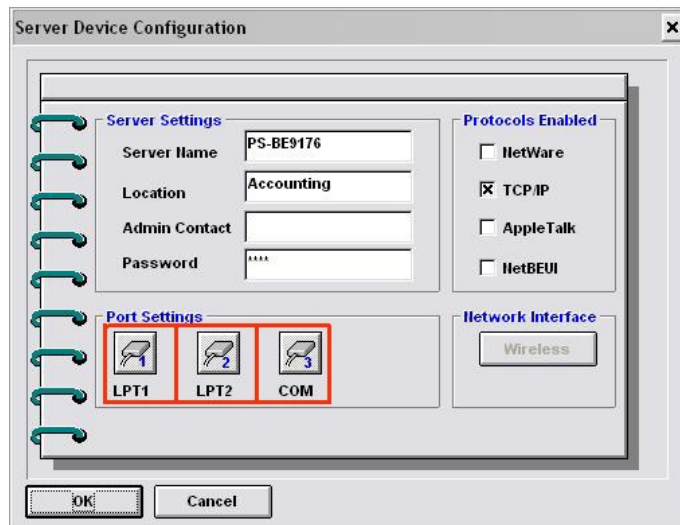
Q: How do I find the Port Name of the Print Server?

A: Step 1. Click on “Server Device”.

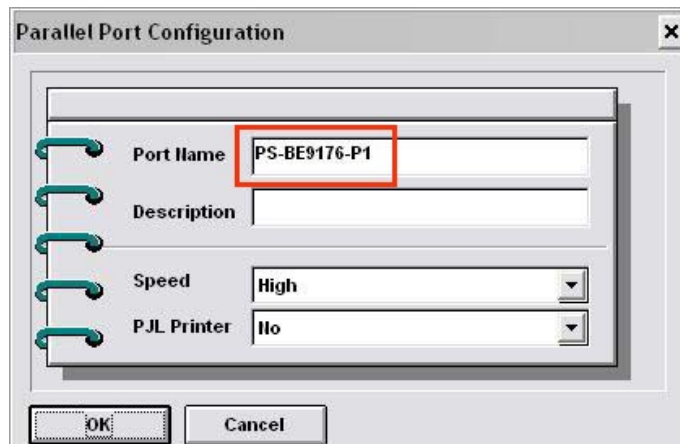


TEW-PS3 F.A.Q.

Step 2. Click on the port that you have your printer plugged into.

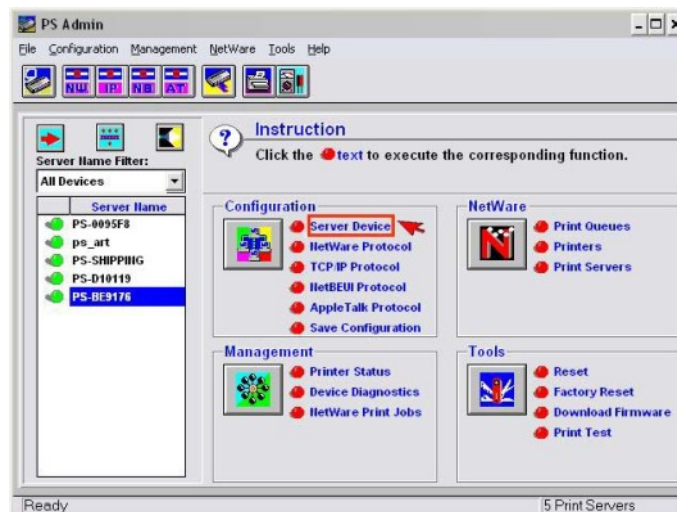


Step 3. Write down the Port Name for future reference.



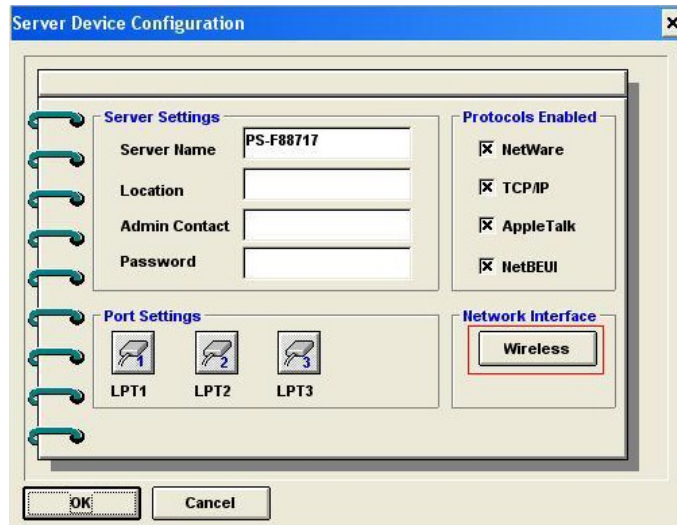
Q: How do I setup my wireless settings?

A: Step 1. Click on "Server Device".

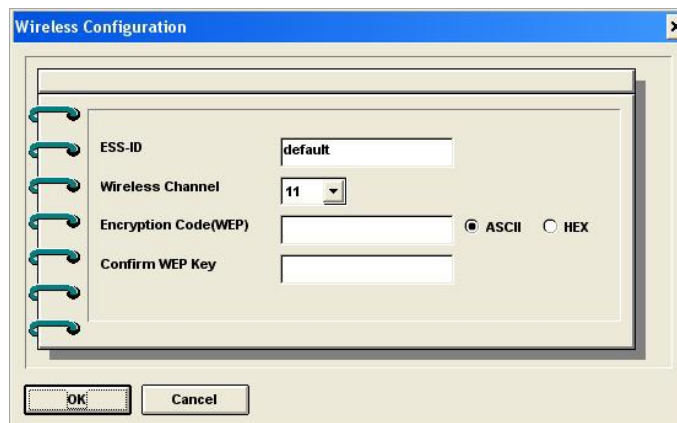


TEW-PS3 F.A.Q.

Step 2. Click on the “**Wireless**” button.



Step 3. Input the ESS-ID and channel of your wireless access point or router. If you are using Encryption on your wireless network, you will be required to input the WEP key. For 64 bit hex you will be required to input 10 characters and for 128 bit WEP, you will be required to input 26 characters. If you are using ASCII you will be required to input 5 characters for 64 bit and 13 characters for 128 bit encryption then click “**OK**”.



Q: How do I install my printer on Windows 95/98/ME?

A: In Windows 98/Me you will need to install the LPR client.

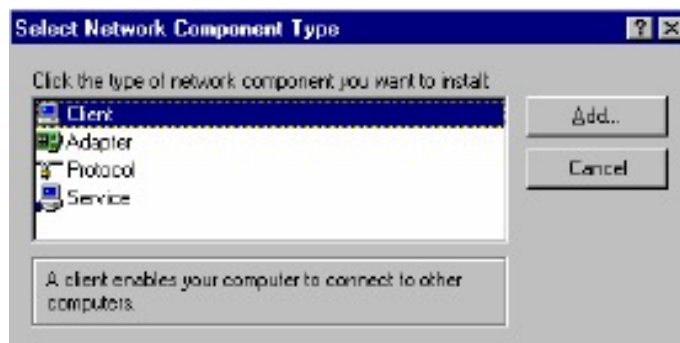
For Windows 98/ME you will also need to know the port name that you are printing to (The Port Name is the PS-xxxxxx-P1, x being the actual number listed in the Port Name box).

Installing LPR:

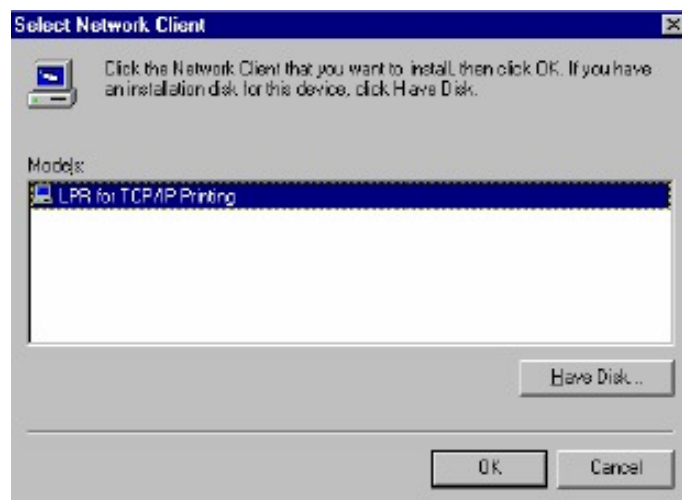
Step 1. Once the file is downloaded and extracted, Go to **Start > Settings > Control Panel >** double-click on **Networks**. Click on **Add**.

TEW-PS3 F.A.Q.

Step 2 Highlight **Client** and click on **Add**.



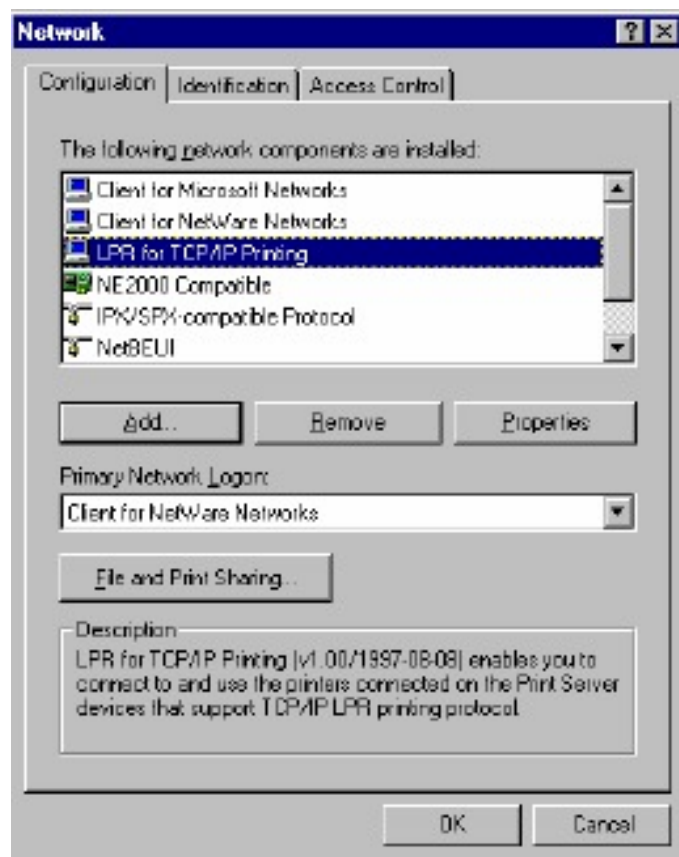
Step 3. Click on **Have Disk > Browse**. Browse to the location of the extracted LPR Client.



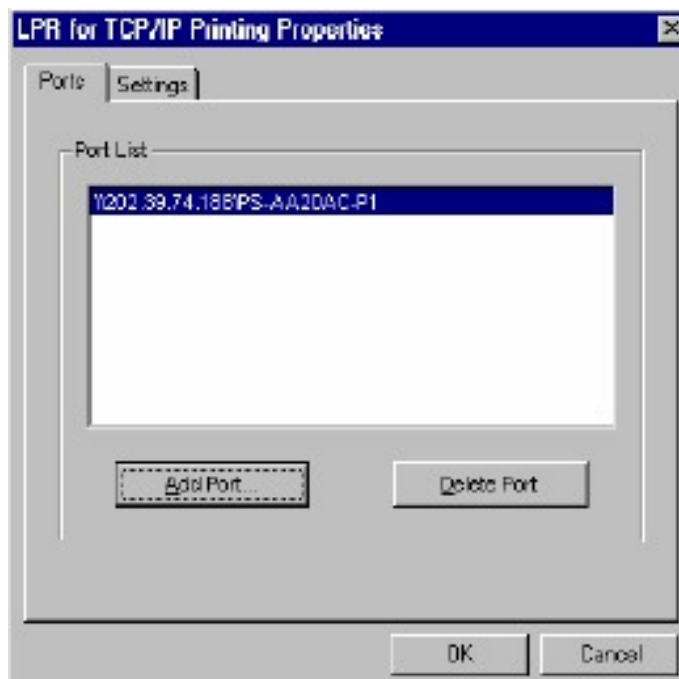
Step 4. Click **OK** 3 times.

TEW-PS3 F.A.Q.

Step 5. From the list highlight LPR for TCP/IP and click on Properties.

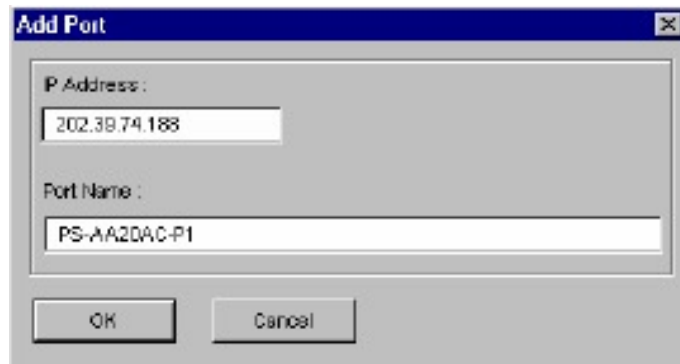


Step 6. Click on **Add Port**.



TEW-PS3 F.A.Q.

In the top field type in the IP address of your print server. In the bottom field type in the port name of your print server, the Port Name is the PS-xxxxxx-P1, x being the actual number listed in the Port Name box. Click on **OK**.



Step 7. Click on **OK**. Windows will ask you to restart. Click **Yes**.

LPR is now properly installed on your computer.

Printer Installation

Step 1. Open your printers folder. Go to **Start > Settings > Printers**.

Step 2. Double-click on the **Add Printer** icon which will launch the Add Printer Wizard.



TEW-PS3 F.A.Q.

Step 3. Select **Network Printer** and click on **Next**.

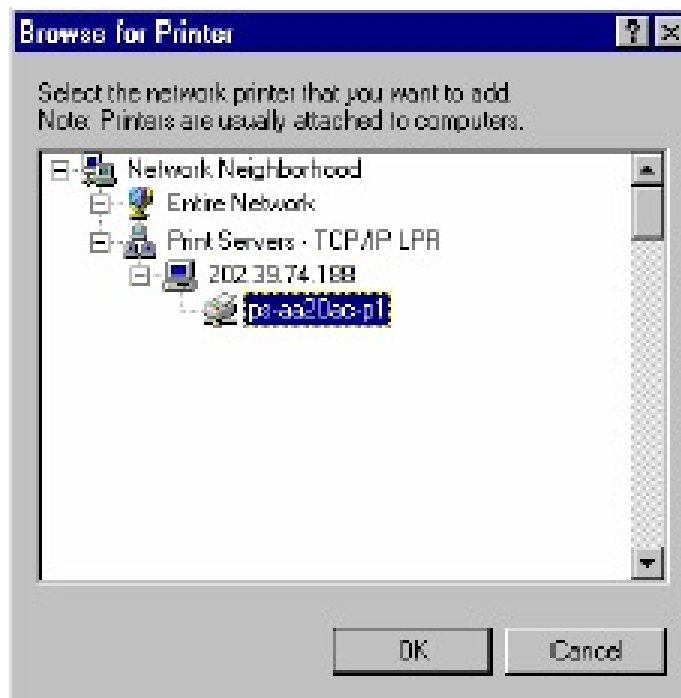


Step 4. Click on the **Browse** button and browse to the print server.



TEW-PS3 F.A.Q.

Step 5. Highlight the Print Server and click on **OK** to return to the Add Printer Wizard.



Step 6. Click on **Next**. If you are unable to do this you can manually enter the Print Server by using two backslashes, the IP address, one backslash and the port name of you printer.

Step 7. You will now be asked to select a printer to install.



If you can not find your printer from the list, click on the **Have Disk** button and browse to the printer drivers for your printer (floppy, CD, or downloaded).

Step 8. If you find your printer in the list, click on it and then click on **OK**. Windows will install the drivers.

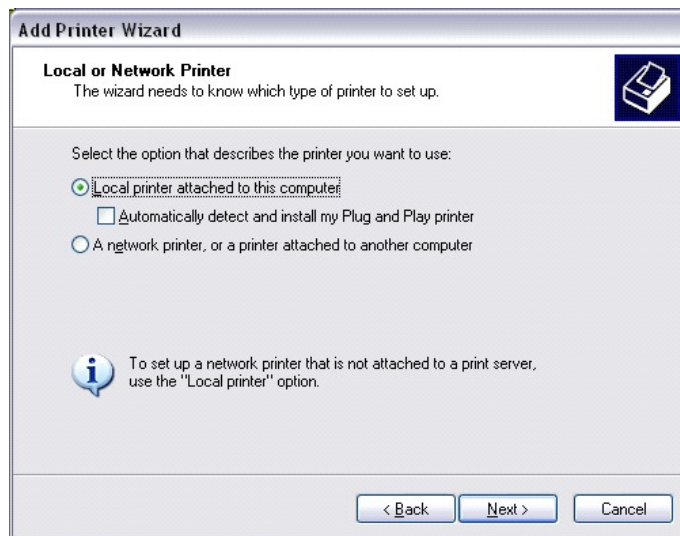
TEW-PS3 F.A.Q.

- Step 9.** Once the drivers been installed, click **Finish** to complete the installation. You may be prompted for your Windows CD. If you are prompted for the CD, browse to the Win98 folder on the Windows CD and click on **OK**
- Step 10.** After the drivers have been installed for your printer, you will be prompted to print a test page. Select **Yes** and click on **Finish**.

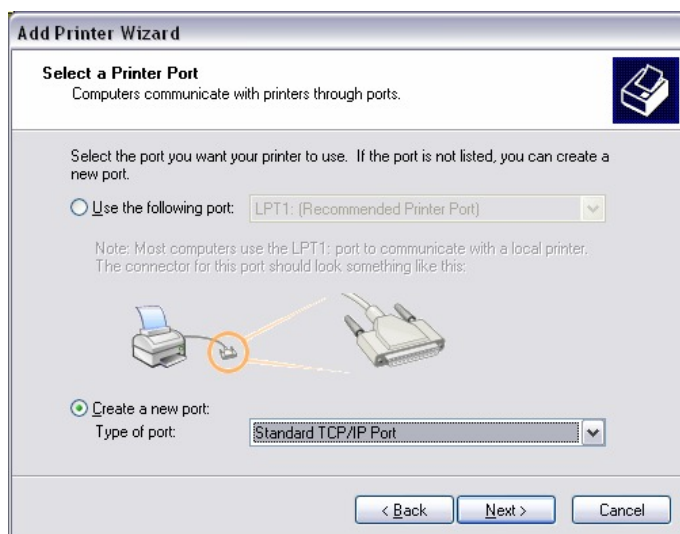
Q: How do I install my printer on Windows 2000/XP?

A: Step 1. Go to **Start>Settings>Printers>Add New Printer** (Win XP - **Start>Printers and Faxes>Add a Printer**).

- Step 2.** Select **Local Printer**. Make sure to uncheck **Automatically detect and install my plug and play printer**. Click **Next**.

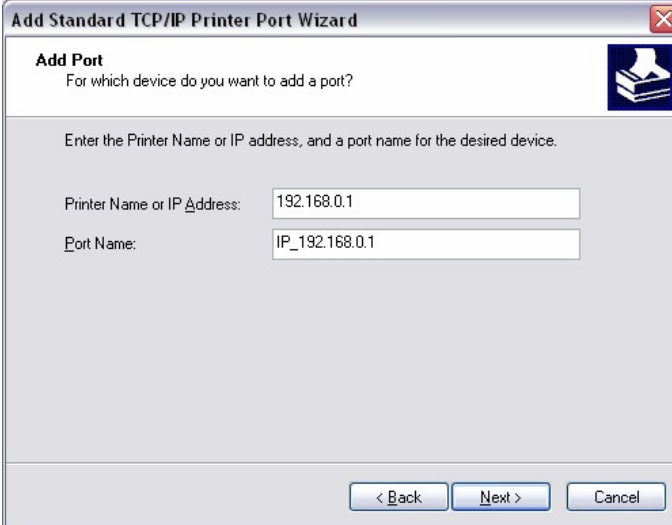


- Step 3.** Select **Create a New Port** and select **Standard TCP/IP port**. Click **Next**.



TEW-PS3 F.A.Q.


Step 4. Enter the IP address of the router (192.168.0.1). Leave the port name with the default name. Click **Next**.



The screenshot shows the 'Add Standard TCP/IP Printer Port Wizard' dialog box. The title bar reads 'Add Standard TCP/IP Printer Port Wizard'. The main heading is 'Add Port' with a subtext 'For which device do you want to add a port?'. Below this, it says 'Enter the Printer Name or IP address, and a port name for the desired device.' There are two input fields: 'Printer Name or IP Address:' with the value '192.168.0.1' and 'Port Name:' with the value 'IP_192.168.0.1'. At the bottom, there are three buttons: '< Back', 'Next >', and 'Cancel'.

Step 5. You will get a message saying that additional port information required.

Step 6. Select **Custom** and then click **Settings**.

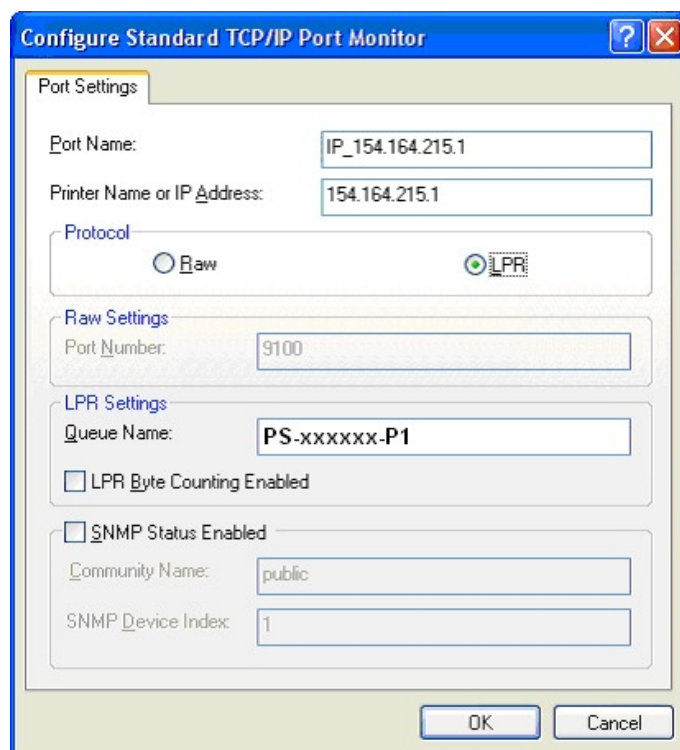


The screenshot shows the 'Add Standard TCP/IP Printer Port Wizard' dialog box. The title bar reads 'Add Standard TCP/IP Printer Port Wizard'. The main heading is 'Additional Port Information Required' with a subtext 'The device could not be identified.' Below this, it says 'The device is not found on the network. Be sure that:' followed by a list of four items: 1. The device is turned on, 2. The network is connected, 3. The device is properly configured, 4. The address on the previous page is correct. It then says 'If you think the address is not correct, click Back to return to the previous page. Then correct the address and perform another search on the network. If you are sure the address is correct, select the device type below.' There are two radio buttons: 'Standard' (selected) and 'Custom'. The 'Standard' button is disabled. The 'Custom' button is enabled and has a 'Settings...' button next to it. At the bottom, there are three buttons: '< Back', 'Next >', and 'Cancel'.

TEW-PS3 F.A.Q.

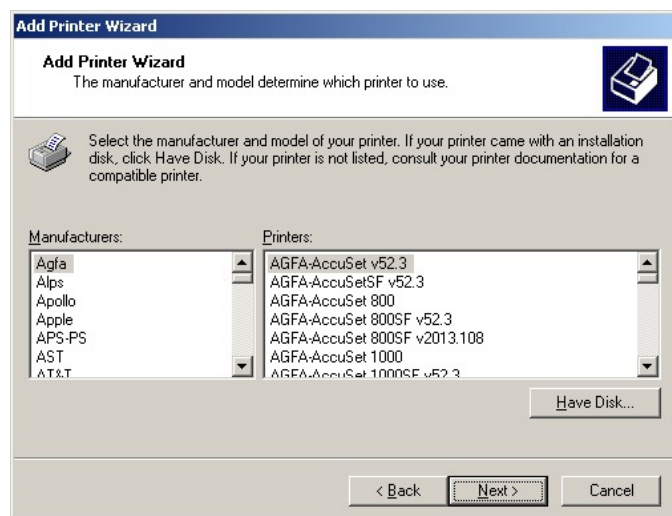
Step 7. Set Protocol to **LPR**.

Step 8. For the LPR Settings for the TEW-PS1U the Queue Name will be PS-xxxxxx-P1, X being the actual number listed in the Port Name box. It is case sensitive!



Step 9. Select **OK > Finish**.

Step 10. Continue with the **Add Printer Wizard**. Choose your printer from the list or click **Have Disk** and point to your printer driver disk.



TEW-PS3 F.A.Q.

Q: Does the TEW-PS3 support Macintosh operating systems?

A: Yes, but you must assign the print server an IP address from a Windows based operating system first. Once that is done you can use LPR or LPD printing for the Macs and you can manage the print server by entering its IP address into a web browser. Also the printer must be a postscript printer.

Note: For a Macintosh the printer must support post script.

Q: What are the queue names of the TEW-PS3?

A: The queue name will be PS-xxxxxx-P1, X being the actual number listed in the Port Name box. It is case sensitive.

Q: Why can't I see my printer status information?

A: Print servers are IEEE1284 bi-directional compatible. This means that data can be sent and received in both directions between the printer and the print server.

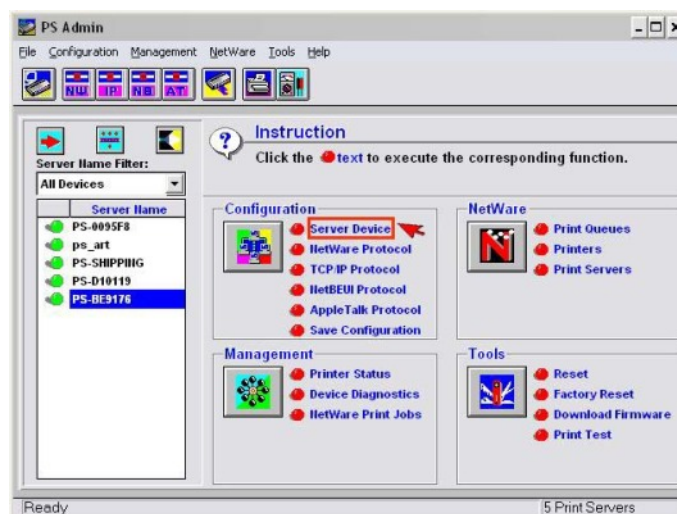
Toner status, paper level, etc., will not be communicated back to the PC. In order to get printer status information, the proprietary printer driver has embedded code that needs to be passed on to the print server, decoded, then interpreted by the print server. TRENDnet print servers do not support embedded driver codes. TRENDnet print servers, whether in Gateways or Stand Alone, are plain TCP/IP print servers.

Q: Why is my printer, printing a lot of garbage characters?

A: Make sure that you have the latest print drivers for you printer.

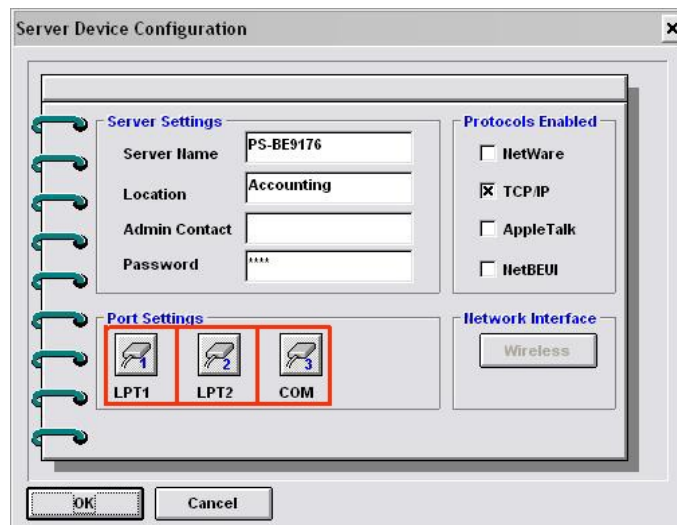
You can also try changing the port speed to low from with in the PS-Admin Utility to Low.

Step 1. Click on “**Server Device**”.



TEW-PS3 F.A.Q.

Step 2. Click on the port that you have your printer plugged into.



Step 3. Change the Speed using the drop down menu.

