



User's Guide



TEW-AI86D
TEW-AI86DB

Table of Contents

Español	1
1. Antes de iniciar	1
2. Instalación del Hardware	2
Troubleshooting	7

1. Preparación para la instalación

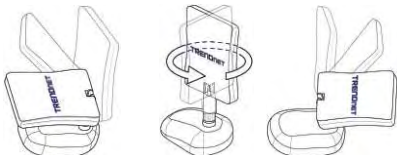


Contenidos del paquete

- TEW-AI86D/TEW-AI86DB
- Base para montar la antena (sólo para TEW-AI86DB)
- Guía del Usuario
- Kit de montaje (sólo para TEW-AI86DB)

Detalles del producto

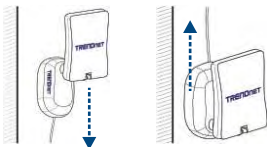
La antena interior direccional tiene un conector hembra SMA inverso que puede conectarse a su punto de acceso o adaptador de red inalámbrico



⚠ ADVERTENCIA: La antena puede inclinarse de 0° a 180° y rotar a 360° . El cable de la antena interior es fijo por tanto no rote la antena más allá de 360° .

Montaje en pared/ tabique (base para antena con imanes integrados)

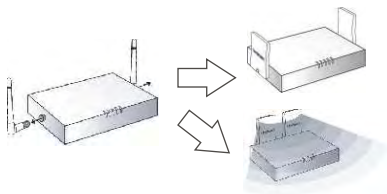
Para el despliegue de la antena, puede montar la antena sobre una pared usando las piezas de fijación y los tornillos incluidos o con sólo adherirla sobre superficies de metal.



Dispositivos recomendados para conectar con esta antena

Estaciones para base inalámbrica con antena (s) desmontable:

Para focalizar la emisión de señal y alcanzar un rango de cobertura más amplio en su casa u oficina, la antena genera una señal direccional amplia de 80°.



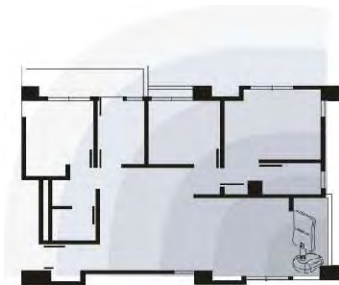
Adaptador PCI inalámbrico o cámara IP con antena



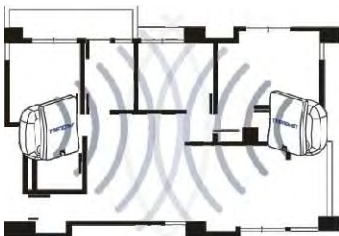
⚠ Recomendación: Debido a la naturaleza bidireccional de los dispositivos WiFi (recepción/transmisión), se recomienda que instale antenas externas sobre la estación base AP o cliente.

Posición de instalación recomendada

La antena TEW-AI86D tiene cobertura de señal direccional de 80° . Por tanto, la posición ideal para la antena está en la esquina del área de cobertura.



Las antenas TEW-AI86D pueden también colocarse al lado o en el borde del área de cobertura para un rango de transmisión amplio en el vestíbulo o pasillo.



Métodos y configuración para montar la base de la antena

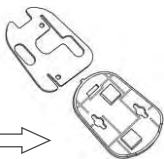
⚠️ POR FAVOR LEA LOS SIGUIENTES PASOS DE INSTALACIÓN ANTES DE EMPEZAR A PERFORAR ORIFICIOS EN LA PARED.



Presione la lengüeta



Quite la tapa o cubierta



Retire la placa de peso

Tras quitar la cubierta inferior de la base, retire la placa de peso de metal de las horquillas para techo, desvelando así los orificios para tornillo.

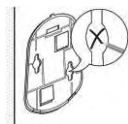
⚠️ Con el fin de reducir el peso y aumentar la potencia magnética, es altamente recomendable retirar el plato de metal antes de instalar la antena en un techo, un tabique o en cualquier superficie de metal.



Seleccione la ubicación



Coloque la plantilla base



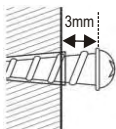
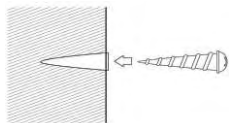
Marque la posición del tornillo

⚠ ADVERTENCIA: Asegúrese de que el dispositivo AP/Cliente puede alcanzar la posición de la antena seleccionada (el cable de la antena es de 1 metro/ 6 pies)

Tras haber marcado la pared para indicar los lugares de perforación apropiados, vuelva a ensamblar la base de la antena sin el peso de metal. Las horquillas no deberían sobresalir.

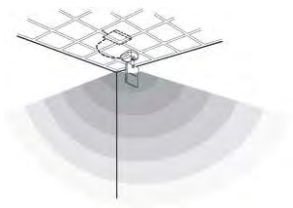
Sobre los tornillos

Tras perforar los orificios en las láminas de yeso/ gypsum/ placas de yeso, sumerja los anclajes plásticos dentro del orificio (cabeza de perforación de 1/8 pulgadas (3mm)). Deje aproximadamente de 3 a 5 mm (1/8 pulgadas) del tornillo roscado expuesto) tal como se representa en los diagramas de abajo.



Montaje en techo mediante el uso de horquillas o imanes

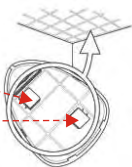
Esta característica especial de montaje en techo se recomienda para usar principalmente cuando la estación base inalámbrica está escondida por encima del techo o si se utiliza algún tipo de caja protectora antirrobo.



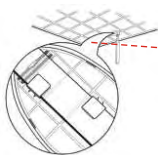
Cómo ensamblar la base de la antena para usar con los sistemas del techo



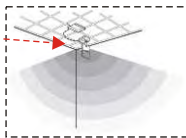
Presione la lengüeta y levántela



Déle la vuelta a la cubierta para exponer las horquillas para techo



Fije las horquillas al empalme de tubos en T



Oculte el enrutador/ AP

⚠ Nota: Si el empalme de tubos en T del techo es de acero, no será necesario que voltee la cubierta de la antena, dado que la base tiene imanes integrados que pueden ser usados para adherir la antena al empalme de tubos en T del techo.

Q1. How come I cannot transmit or receive Wi-Fi signals with my TEW-AI86D?

A1. The TEW-AI86D is a directional antenna and can only send and receive signals from the front panel. Make sure to adjust the position of the antenna by directing the front panel to laptops, PCs or other wireless devices.

Q2. My access point indicates that it is receiving power, and my laptop is within range of the TEW-AI86D. However, my laptop does not receive any signals from my access point.

A2. Make sure that you properly connect the antenna to the Wi-Fi Access Point. (See 2. Hardware Installation)

Q3. Why won't the TEW-AI86D work with my IEEE 802.11a Wireless Router or Access point?

A3. Yes. The TEW-AI86D is compatible with IEEE 802.11a/b/g wireless devices.

Q4. Is it necessary to use the tapping screws or the wall anchors that come with the TEW-AI86DB?

A4. It is only necessary if you decide to mount the TEW-AI86DB at a permanent location. Use discretion when attaching mounting brackets to the TEW-AI86DB.

If you have any questions regarding the TEW-AI86D/TEW-AI86DB, please contact TRENDnet Technical Support Department.

Certifications

This equipment has been tested and found to comply with FCC and CE Rules. Operation is subject to the following two conditions:

- (1) This device may not cause harmful interference.
- (2) This device must accept any interference received.
Including interference that may cause undesired operation.



Waste electrical and electronic products must not be disposed of with household waste. Please recycle where facilities exist. Check with you Local Authority or Retailer for recycling advice.



NOTE: THE MANUFACTURER IS NOT RESPONSIBLE FOR ANY RADIO OR TV INTERFERENCE CAUSED BY UNAUTHORIZED MODIFICATIONS TO THIS EQUIPMENT. SUCH MODIFICATIONS COULD VOID THE USER'S AUTHORITY TO OPERATE THE EQUIPMENT.

Limited Warranty

TRENDnet warrants its products against defects in material and workmanship, under normal use and service, for the following lengths of time from the date of purchase.

TEW-AI86D/TEW-AI86DB - 3 Years Warranty

If a product does not operate as warranted above during the applicable warranty period, TRENDnet shall, at its option and expense, repair the defective product or part, deliver to customer an equivalent product or part to replace the defective item, or refund to customer the purchase price paid for the defective product. All products that are replaced will become the property of TRENDnet. Replacement products may be new or reconditioned.

TRENDnet shall not be responsible for any software, firmware, information, or memory data of customer contained in, stored on, or integrated with any products returned to TRENDnet pursuant to any warranty.

There are no user serviceable parts inside the product. Do not remove or attempt to service the product by any unauthorized service center. This warranty is voided if (i) the product has been modified or repaired by any unauthorized service center, (ii) the product was subject to accident, abuse, or improper use (iii) the product was subject to conditions more severe than those specified in the manual.

Warranty service may be obtained by contacting TRENDnet office within the applicable warranty period for a Return Material Authorization (RMA) number, accompanied by a copy of the dated proof of the purchase. Products returned to TRENDnet must be pre-authorized by TRENDnet with RMA number marked on the outside of the package, and sent prepaid, insured and packaged appropriately for safe shipment.

WARRANTIES EXCLUSIVE: IF THE TRENDnet PRODUCT DOES NOT OPERATE AS WARRANTED ABOVE, THE CUSTOMER'S SOLE REMEDY SHALL BE, AT TRENDnet'S OPTION, REPAIR OR REPLACEMENT. THE FOREGOING WARRANTIES AND REMEDIES ARE EXCLUSIVE AND ARE IN LIEU OF ALL OTHER WARRANTIES, EXPRESSED OR IMPLIED, EITHER IN FACT OR BY OPERATION OF LAW, STATUTORY OR OTHERWISE, INCLUDING WARRANTIES OF MERCHANTABILITY AND FITNESS FOR A PARTICULAR PURPOSE. TRENDnet NEITHER ASSUMES NOR AUTHORIZES ANY OTHER PERSON TO ASSUME FOR IT ANY OTHER LIABILITY IN CONNECTION WITH THE SALE, INSTALLATION MAINTENANCE OR USE OF TRENDnet'S PRODUCTS.

TRENDnet SHALL NOT BE LIABLE UNDER THIS WARRANTY IF ITS TESTING AND EXAMINATION DISCLOSE THAT THE ALLEGED DEFECT IN THE PRODUCT DOES NOT EXIST OR WAS CAUSED BY CUSTOMER'S OR ANY THIRD PERSON'S MISUSE, NEGLIGENCE, IMPROPER INSTALLATION OR TESTING, UNAUTHORIZED ATTEMPTS TO REPAIR OR MODIFY, OR ANY OTHER CAUSE BEYOND THE RANGE OF THE INTENDED USE, OR BY ACCIDENT, FIRE, LIGHTNING, OR OTHER HAZARD.

LIMITATION OF LIABILITY: TO THE FULL EXTENT ALLOWED BY LAW TRENDnet ALSO EXCLUDES FOR ITSELF AND ITS SUPPLIERS ANY LIABILITY, WHETHER BASED IN CONTRACT OR TORT (INCLUDING NEGLIGENCE), FOR INCIDENTAL, CONSEQUENTIAL, INDIRECT, SPECIAL, OR PUNITIVE DAMAGES OF ANY KIND, OR FOR LOSS OF REVENUE OR PROFITS, LOSS OF BUSINESS, LOSS OF INFORMATION OR DATA, OR OTHER FINANCIAL LOSS ARISING OUT OF OR IN CONNECTION WITH THE SALE, INSTALLATION, MAINTENANCE, USE, PERFORMANCE, FAILURE, OR INTERRUPTION OF THE POSSIBILITY OF SUCH DAMAGES, AND LIMITS ITS LIABILITY TO REPAIR, REPLACEMENT, OR REFUND OF THE PURCHASE PRICE PAID, AT TRENDnet'S OPTION. THIS DISCLAIMER OF LIABILITY FOR DAMAGES WILL NOT BE AFFECTED IF ANY REMEDY PROVIDED HEREIN SHALL FAIL OF ITS ESSENTIAL PURPOSE.

Governing Law: This Limited Warranty shall be governed by the laws of the state of California.



TRENDnet

TRENDnet Technical Support

US/Canada Support Center

Contact

Telephone: 1(888) 777-1550

Fax: 1(310) 626-6267

Email: support@trendnet.com

Tech Support Hours

7:30am - 6:00pm
Pacific Standard Time
Monday - Friday

European Support Center

Contact**Telephone:**

Deutsch: +49 (0) 6331 / 268-460

Français: +49 (0) 6331 / 268-461

0800-907-161 (numéro vert)

Español: +49 (0) 6331 / 268-462

English: +49 (0) 6331 / 268-463

Italiano: +49 (0) 6331 / 268-464

Dutch: +49 (0) 6331 / 268-465

Fax: +49 (0) 6331 / 268-466

Tech Support Hours

8:00am - 6:00pm
Middle European Time
Monday - Friday

Product Warranty Registration

Please take a moment to register your product online.
Go to TRENDnet's website at <http://www.trendnet.com>

TRENDnet

3135 Kashiwa Street

Torrance, CA 90505

USA