



TRENDNET



User's Guide



TEW-AI86D
TEW-AI86DB

Table of Contents

Français	1
1. Avant de commencer	1
2. Procéder à l'installation	2
Troubleshooting	7

1. Avant de commencer

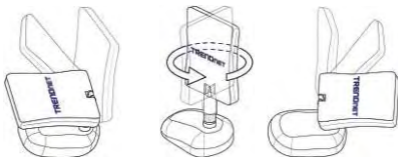


l'emballage

- TEW-AI86D/TEW-AI86DB
- Base de fixation de l'antenne (TEW-AI86DB uniquement)
- Guide de l'utilisateur
- Kit d'installation (TEW-AI86DB uniquement)

Détails du produit

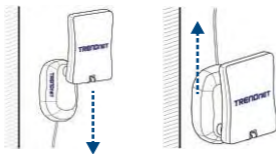
L'antenne intérieure directionnelle est équipée d'une prise SMA femelle inversée qui peut être branchée soit à votre Point d'accès, soit à votre adaptateur réseau sans fil.



⚠ AVERTISSEMENT: L'antenne peut basculer de 0° à 180° et pivoter à 360°. Le câble interne de l'antenne étant fixé, veuillez ne pas faire pivoter l'antenne au-delà de 360°.

Fixation murale ou sur cloison (la base de l'antenne est équipée d'aimants)

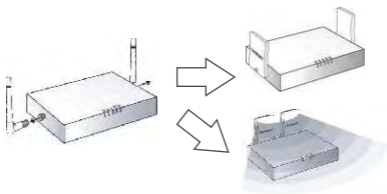
Pour installer l'antenne, vous pouvez la fixer au mur à l'aide des Fixations et des vis fournies ou simplement l'appliquer sur une surface métallique.



Dispositifs recommandés pour brancher cette antenne

Stations de base sans fil avec antenne(s) amovible(s) :

Pour améliorer l'émission du signal afin d'obtenir une meilleure couverture chez vous ou au bureau, l'antenne fournit un signal directionnel de 80°.



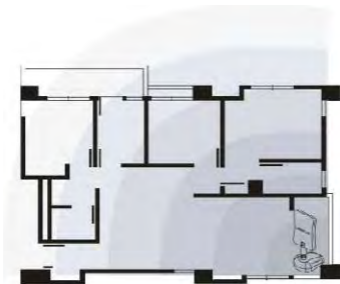
Adaptateur PCI sans fil ou caméra IP avec antenne amovible



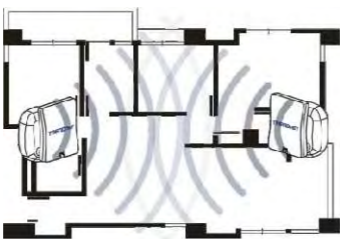
⚠ Recommandation: A cause de la nature bidirectionnelle des terminaux WiFi (émission/réception), il est recommandé d'installer des antennes externes sur la station de base PA ainsi que sur le client.

Positions d'installations recommandées

L'antenne TEW-AI86D a une couverture directionnelle de 80°. C'est pourquoi la position idéale de l'antenne est le coin d'une zone couverte.

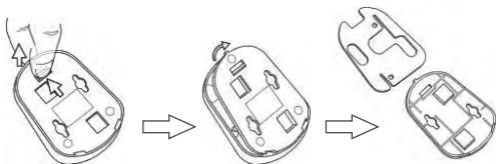


Les antennes TEW-AI86D peuvent également être positionnées sur le côté ou sur le bord de la zone couverte pour une transmission longue portée dans un hall ou un couloir.



Méthodes et configuration de fixation de la station de base

⚠ VEUILLEZ LIRE ATTENTIVEMENT LES INSTRUCTIONS D'INSTALLATION CI-DESSOUS AVANT DE FORER DES TROUS DANS LE MUR.



Appuyez sur l'onglet

**Soulevez le
couvercle**

**Enlevez le
contrepois**

Après avoir enlevé le couvercle de son logement, enlevez le contrepois métallique des clips de fixation, révélant ainsi les trous des vis.

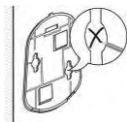
⚠ Afin de diminuer le poids et d'augmenter l'adhérence magnétique, il est fortement recommandé d'enlever la plaque métallique avant d'installer l'antenne au plafond, sur une cloison ou sur toute surface métallique.



Choisissez
l'endroit



Positionnez le
modèle de base



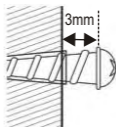
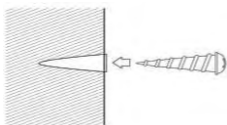
Indiquez la
position des vis

⚠ AVERTISSEMENT: Veuillez vous assurer que le dispositif de PA / client peut atteindre la position que vous destinez à l'antenne (le câble de l'antenne mesure 1 mètre)

Après avoir indiqué sur le mur les endroits à forer, remontez le support de l'antenne sans le contrepoids métallique. Les clips ne devraient pas dépasser.

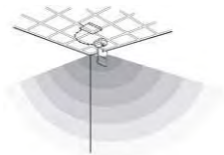
A propos des vis

Après avoir foré les trous dans la cloison/ la plaque de plâtre, enfoncez la cheville en plastique dans le trou (utiliser un foret de 3 mm). Laissez dépasser environ de 3 à 5 mm de la vis, comme indiqué sur le schéma ci-dessous.



Fixation au plafond à l'aide des clips de fixation ou des aimants

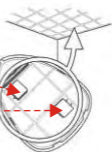
Le système spécial de fixation au plafond est surtout recommandé lorsque votre station de base sans fil est cachée dans le plafond ou qu'un dispositif quelconque de protection anti-vol est installé.



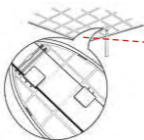
Comment assembler le support de l'antenne au plafond



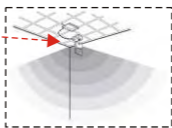
Pressez l'onglet et faites pivoter



Retournez le couvercle pour exposer les clips de fixation



Fixez les clips à la jointure



Camouflez le routeur / PA

⚠ Remarque: Si les jointures du plafond sont en métal, retourner le couvercle de la base de l'antenne peut ne pas être nécessaire, parce que la base est équipée d'aimants qui peuvent être utilisés pour fixer l'antenne à la jointure du plafond.

Q1. How come I cannot transmit or receive Wi-Fi signals with my TEW-AI86D?

A1. The TEW-AI86D is a directional antenna and can only send and receive signals from the front panel. Make sure to adjust the position of the antenna by directing the front panel to laptops, PCs or other wireless devices.

Q2. My access point indicates that it is receiving power, and my laptop is within range of the TEW-AI86D. However, my laptop does not receive any signals from my access point.

A2. Make sure that you properly connect the antenna to the Wi-Fi Access Point. (See 2. Hardware Installation)

Q3. Why won't the TEW-AI86D work with my IEEE 802.11a Wireless Router or Access point?

A3. Yes. The TEW-AI86D is compatible with IEEE 802.11a/b/g wireless devices.

Q4. Is it necessary to use the tapping screws or the wall anchors that come with the TEW-AI86DB?

A4. It is only necessary if you decide to mount the TEW-AI86DB at a permanent location. Use discretion when attaching mounting brackets to the TEW-AI86DB.

If you have any questions regarding the TEW-AI86D/TEW-AI86DB, please contact TRENDnet Technical Support Department.

Certifications

This equipment has been tested and found to comply with FCC and CE Rules. Operation is subject to the following two conditions:

- (1) This device may not cause harmful interference.
- (2) This device must accept any interference received.
Including interference that may cause undesired operation.



Waste electrical and electronic products must not be disposed of with household waste. Please recycle where facilities exist. Check with you Local Authority or Retailer for recycling advice.



NOTE: THE MANUFACTURER IS NOT RESPONSIBLE FOR ANY RADIO OR TV INTERFERENCE CAUSED BY UNAUTHORIZED MODIFICATIONS TO THIS EQUIPMENT. SUCH MODIFICATIONS COULD VOID THE USER'S AUTHORITY TO OPERATE THE EQUIPMENT.

Limited Warranty

TRENDnet warrants its products against defects in material and workmanship, under normal use and service, for the following lengths of time from the date of purchase.

TEW-AI86D/TEW-AI86DB - 3 Years Warranty

If a product does not operate as warranted above during the applicable warranty period, TRENDnet shall, at its option and expense, repair the defective product or part, deliver to customer an equivalent product or part to replace the defective item, or refund to customer the purchase price paid for the defective product. All products that are replaced will become the property of TRENDnet. Replacement products may be new or reconditioned.

TRENDnet shall not be responsible for any software, firmware, information, or memory data of customer contained in, stored on, or integrated with any products returned to TRENDnet pursuant to any warranty.

There are no user serviceable parts inside the product. Do not remove or attempt to service the product by any unauthorized service center. This warranty is voided if (i) the product has been modified or repaired by any unauthorized service center, (ii) the product was subject to accident, abuse, or improper use (iii) the product was subject to conditions more severe than those specified in the manual.

Warranty service may be obtained by contacting TRENDnet office within the applicable warranty period for a Return Material Authorization (RMA) number, accompanied by a copy of the dated proof of the purchase. Products returned to TRENDnet must be pre-authorized by TRENDnet with RMA number marked on the outside of the package, and sent prepaid, insured and packaged appropriately for safe shipment.

WARRANTIES EXCLUSIVE: IF THE TRENDnet PRODUCT DOES NOT OPERATE AS WARRANTED ABOVE, THE CUSTOMER'S SOLE REMEDY SHALL BE, AT TRENDnet'S OPTION, REPAIR OR REPLACEMENT. THE FOREGOING WARRANTIES AND REMEDIES ARE EXCLUSIVE AND ARE IN LIEU OF ALL OTHER WARRANTIES, EXPRESSED OR IMPLIED, EITHER IN FACT OR BY OPERATION OF LAW, STATUTORY OR OTHERWISE, INCLUDING WARRANTIES OF MERCHANTABILITY AND FITNESS FOR A PARTICULAR PURPOSE. TRENDnet NEITHER ASSUMES NOR AUTHORIZES ANY OTHER PERSON TO ASSUME FOR IT ANY OTHER LIABILITY IN CONNECTION WITH THE SALE, INSTALLATION MAINTENANCE OR USE OF TRENDnet'S PRODUCTS.

TRENDnet SHALL NOT BE LIABLE UNDER THIS WARRANTY IF ITS TESTING AND EXAMINATION DISCLOSE THAT THE ALLEGED DEFECT IN THE PRODUCT DOES NOT EXIST OR WAS CAUSED BY CUSTOMER'S OR ANY THIRD PERSON'S MISUSE, NEGLIGENCE, IMPROPER INSTALLATION OR TESTING, UNAUTHORIZED ATTEMPTS TO REPAIR OR MODIFY, OR ANY OTHER CAUSE BEYOND THE RANGE OF THE INTENDED USE, OR BY ACCIDENT, FIRE, LIGHTNING, OR OTHER HAZARD.

LIMITATION OF LIABILITY: TO THE FULL EXTENT ALLOWED BY LAW TRENDnet ALSO EXCLUDES FOR ITSELF AND ITS SUPPLIERS ANY LIABILITY, WHETHER BASED IN CONTRACT OR TORT (INCLUDING NEGLIGENCE), FOR INCIDENTAL, CONSEQUENTIAL, INDIRECT, SPECIAL, OR PUNITIVE DAMAGES OF ANY KIND, OR FOR LOSS OF REVENUE OR PROFITS, LOSS OF BUSINESS, LOSS OF INFORMATION OR DATA, OR OTHER FINANCIAL LOSS ARISING OUT OF OR IN CONNECTION WITH THE SALE, INSTALLATION, MAINTENANCE, USE, PERFORMANCE, FAILURE, OR INTERRUPTION OF THE POSSIBILITY OF SUCH DAMAGES, AND LIMITS ITS LIABILITY TO REPAIR, REPLACEMENT, OR REFUND OF THE PURCHASE PRICE PAID, AT TRENDnet'S OPTION. THIS DISCLAIMER OF LIABILITY FOR DAMAGES WILL NOT BE AFFECTED IF ANY REMEDY PROVIDED HEREIN SHALL FAIL OF ITS ESSENTIAL PURPOSE.

Governing Law: This Limited Warranty shall be governed by the laws of the state of California.



TRENDnet

TRENDnet Technical Support

US/Canada Support Center

Contact

Telephone: 1(888) 777-1550

Fax: 1(310) 626-6267

Email: support@trendnet.com

Tech Support Hours

7:30am - 6:00pm
Pacific Standard Time
Monday - Friday

European Support Center

Contact**Telephone:**

Deutsch: +49 (0) 6331 / 268-460

Français: +49 (0) 6331 / 268-461

0800-907-161 (numéro vert)

Español: +49 (0) 6331 / 268-462

English: +49 (0) 6331 / 268-463

Italiano: +49 (0) 6331 / 268-464

Dutch: +49 (0) 6331 / 268-465

Fax: +49 (0) 6331 / 268-466

Tech Support Hours

8:00am - 6:00pm
Middle European Time
Monday - Friday

Product Warranty Registration

Please take a moment to register your product online.
Go to TRENDnet's website at <http://www.trendnet.com>

TRENDnet

3135 Kashiwa Street
Torrance, CA 90505
USA