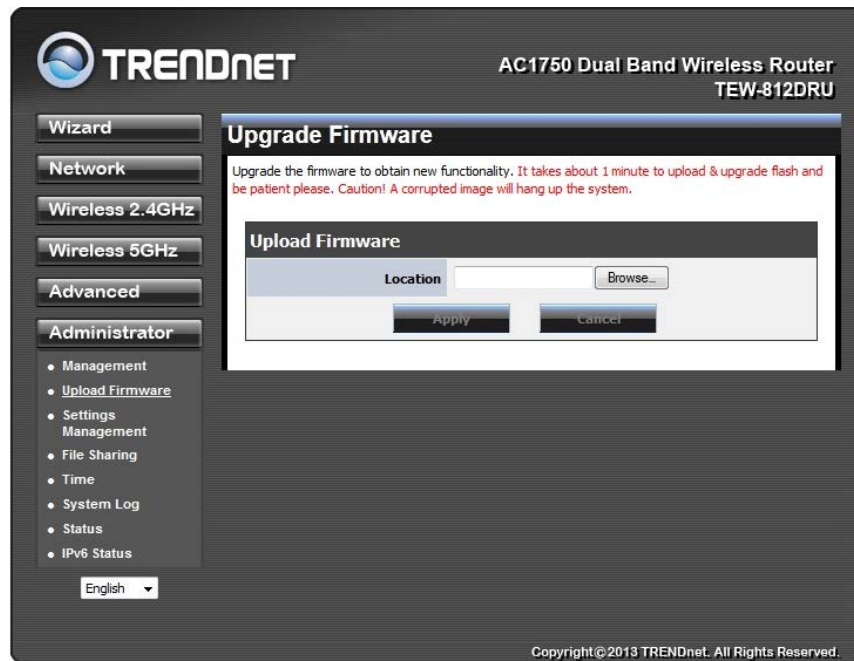
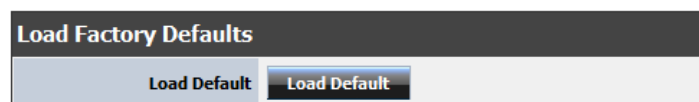


Firmware Upgrade Procedures

1. Save the downloaded firmware file to your PC
2. Right click on the downloaded file and select **Extract All** or **Extract Here** option
 - a. Make sure to remember the location where the extracted file will be saved.
3. Log into to the router's configuration page (default IP is 192.168.10.1)
4. Navigate to the **Administrator** section and select **Upload Firmware** option



5. Click **Browse** and select firmware file (.bin) in the extracted file and the click **Apply** button to load
6. Wait until the firmware upload completed and the device reboots.
7. To finalize the firmware update process you must reset the TEW-812DRU to factory default settings.
8. Click the **Load Default** button located on the Administrator > Settings Management Maintenance section.



Note: You will need to reconfigure and access the router's management page using the default settings.