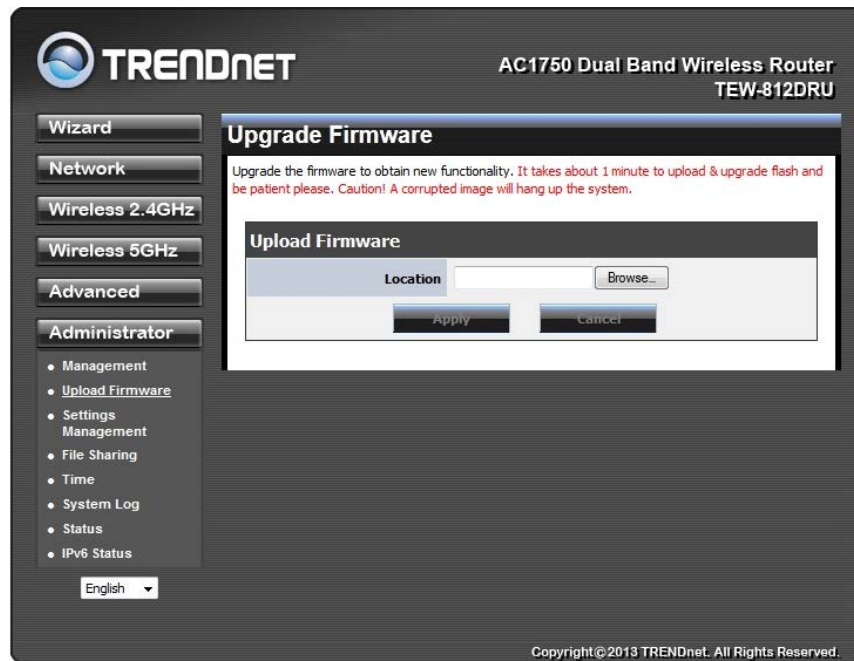


Firmware Upgrade Procedures

1. Save the downloaded firmware file to your PC
2. Right click on the downloaded file and select **Extract All** or **Extract Here** option
 - a. Make sure to remember the location where the extracted file will be saved.
3. Log into to the router's configuration page (default IP is 192.168.10.1)
4. Navigate to the **Administrator** section and select **Upload Firmware** option



5. Click **Browse** and select firmware file (.bin) in the extracted file and the click **Apply** button to load
6. Wait until the firmware upload completed and the device reboots.
7. The firmware upgrade is completed.