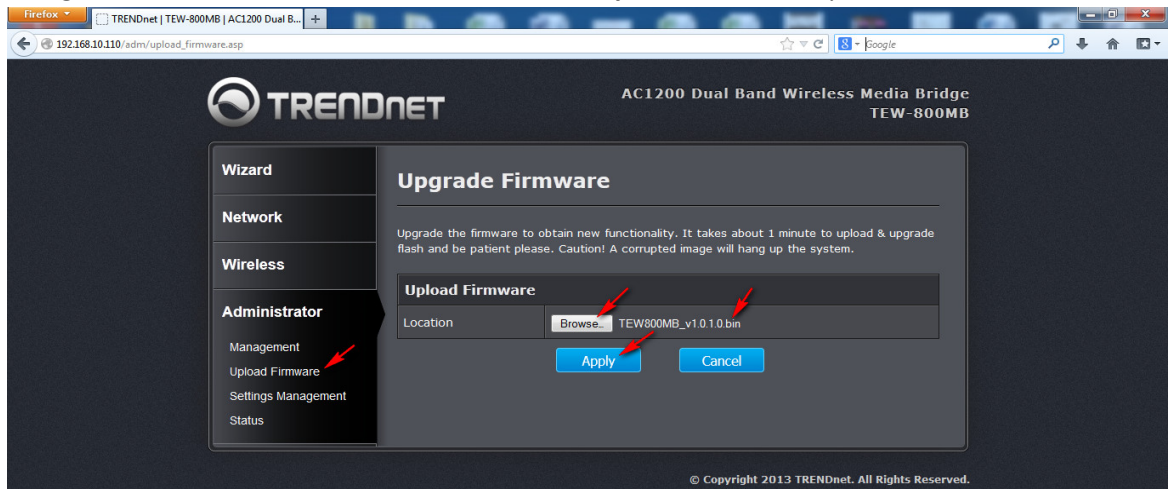


## TEW-800 MB, Firmware Upgrade Procedures

1. Save the downloaded firmware file to your PC
2. Right click on the downloaded file and select **Extract All** or **Extract Here** option
  - a. Make sure to remember the location where the extracted file will be saved.
3. Open your web browser and enter <http://tew-800mb/> or <http://192.168.10.110> into the address bar (default settings).
4. You will be prompted for username and password (“admin” is the default username and check the default password on the label on the bottom panel, or enter the password you changed from the default password).
5. Navigate to the **Administrator** section and select **Upload Firmware** option



6. Click **Browse** and select firmware file (.bin) in the extracted file and the click **Apply** button to load
7. Wait until the firmware upload completed and the device reboots.
8. The firmware upgrade is completed.