



N150 Wireless Outdoor PoE Access Point TEW-715APO

- Quick Installation Guide (1)

1. Before You Start

Package Contents

- TEW-715APO
- CD-ROM (User's Guide)
- Multi-Language Quick Installation Guide
- PoE injector
- Power cord
- Pole mounting clamp
- Grounding wire

Minimum Requirements

- Computer with an Ethernet port and Web Browser
- A network switch or router with an available network LAN port
- 2 x RJ-45 network cables

Note: The TEW-715APO does not support IEEE 802.3af. You must use the proprietary Power over Ethernet injector that is supplied with the TEW-715APO.

2. Hardware Configuration

Note:

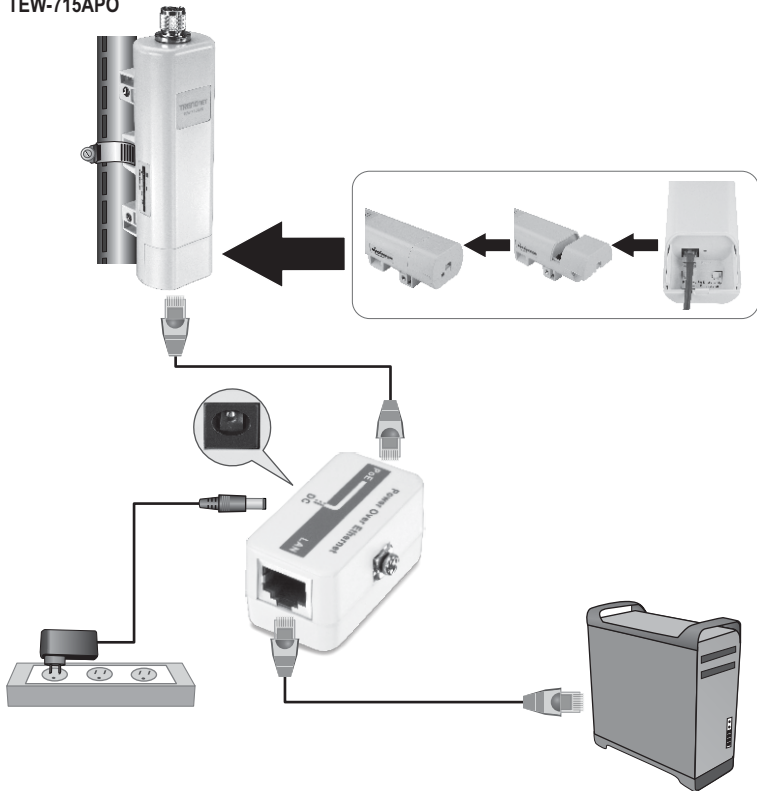
1. The default IP address of the TEW-715APO is 192.168.10.100. To configure the TEW-715APO, your network adapter must have an IP address within the 192.168.10.x subnet (e.g. 192.168.10.50). Please refer to the Appendix in the User's Guide for more information.
2. Disable any anti-virus and firewall programs before configuring the access point.

Phase 1: Configuration

Note:

1. The initial configuration should be completed in a testing environment with the two TEW-715APO's approximately 15 ft. (5 meters) apart from one another.
2. Configure and connect the devices before mounting.

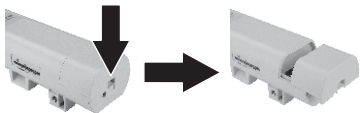
TEW-715APO



1. Write the MAC address of the two TEW-715APOs. The MAC address can be found on the back of the unit.



2. Pinch the tab and slide the cover down.



3. Connect one end of a network cable into the TEW-715APO #1.
 - Remove the bottom cover and connect a network cable to the PoE port.

4. Connect the opposite end of the network cable to the **POE** port on the Power over Ethernet Injector.

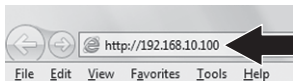
5. Connect one end of another network cable to the **LAN** port on the Power over Ethernet Injector.

6. Connect the other end of a network cable to your computer's Ethernet port.

7. Connect the power adapter into the Power over Ethernet Injector. Then connect the power adapter into a power outlet.

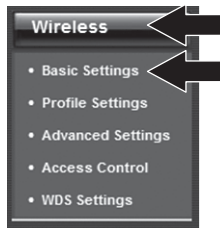
8. Assign a Static IP address to your computer's network adapter in the subnet of 192.168.10.x (e.g. 192.168.10.25) and a subnet mask of 255.255.255.0.

9. Open your web browser, type the IP address of the access point in the address bar, and then press Enter. The default IP address is 192.168.10.100



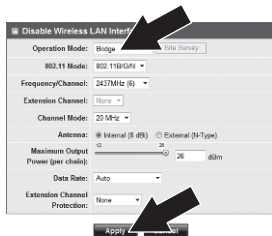
10. Enter the User name and Password, and then click Login. By default:
User Name: admin
Password: admin
Note: User Name and Password are case sensitive.

11. Click **Wireless** and then click **Basic Settings**.



12. Select **Bridge** for Operation Mode.

13. Click **Apply**.



14. Click **OK**.



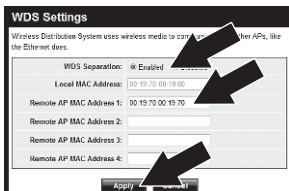
15. Click **Wireless** and then click **WDS Settings**.



16. Click **Enabled** for WDS Separation.

17. Enter the MAC address of the TEW-715APO that you are connecting to.

18. Click **Apply**.



19. Click **OK**.

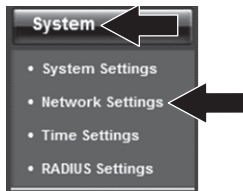
20. Please refer to the user manual for the steps in setting up wireless encryption.

Note: To protect your network from any unauthorized access it is recommended to enable wireless encryption.

21. Click **Back**.



22. Click **System** and then click **Network Settings**.



23. Select **Use Fixed IP Address**.

24. Configure the TEW-715APO's IP address to a valid IP address within the subnet defined by the Router. Avoid using an IP address within the DHCP pool of your router. In this example, we will assume the following:

Router IP Address: 192.168.10.1

Subnet Mask: 255.255.255.0

DHCP Pool:

192.168.10.100~192.168.10.199

The TEW-715APO will be setup with the following IP address assignment:

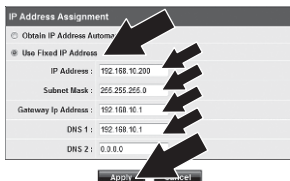
IP Address: 192.168.10.200

Subnet Mask: 255.255.255.0

Gateway IP Address: 192.168.10.1

DNS 1: 192.168.10.1

25. Click **Apply**.



26. Click **OK**.

27. Repeat steps 2-26 for TEW-715APO #2.

Phase 2: Confirm Connectivity

Note:

1. Leave TEW-715APO #2 connected to your computer.
2. Connect TEW-715APO #1 to a LAN port of a router on your network.
3. To verify connectivity, run your computer's command prompt and ping TEW-715APO #1's assigned IP address from your computer.
4. A successful ping reply determines that both TEW-715APOs are configured properly and connected.

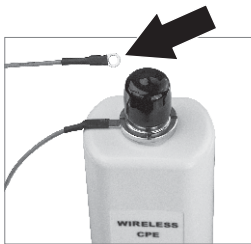
1. Refer to the above diagram.
2. Mount the TEW-715APOs in your desired location. See **Pole Mounting the TEW-715APO** for mounting instructions.
3. Connect the TEW-715APOs to their respective network.
4. Confirm that the TEW-715APOs are facing each other.
5. Verify that the status LED indicators on both TEW-715APOs are fully functional: **Power (Solid/Green)**, **LAN (Blinking/Green)** and **Signal Indicator [Wireless] (Green, Yellow or Red)**.

Connecting the Grounding Wire

1. Loosen and remove the metal O-ring on the N-type connector.
2. Put the grounding wire into the connector and tighten up with the O-ring.



3. Connect the grounding wire to a grounding object. e.g. Earth driven rod or grounded electrical system.



Pole Mounting the TEW-715APO

Note:

The pole mounting clamp supports poles with a maximum diameter of 63mm (2.48 inches).

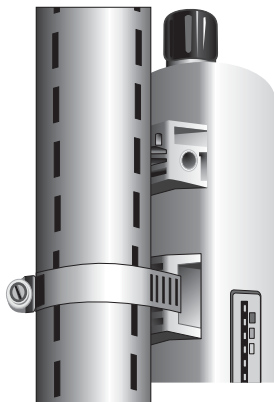
1. Turn the screw on the pole mounting clamp counter clockwise.



2. Insert the pole mounting clamp through the middle of the TEW-715APO.



3. Wrap the mounting clamp around a pole.



4. Secure the TEW-715APO to pole by turning the screw clockwise.



Wireless outdoor access point installation is now complete.

For detailed information regarding the **TEW-715APO's** configuration and advanced settings and mounting instructions, please refer to the User's Guide on the provided CD-ROM.

Declaration of Conformity



Company Information:

Company Name:
TRENDnet, Inc.

Company Address:
20675 Manhattan Place
Torrance, CA 90501
USA

Product Information:

Product Description:
N150 Wireless Outdoor PoE Access Point

Model Number:
TEW-715APO

Brand name:
TRENDnet



Technical Standards:

EN 300 328 V1.7.1: 10-2006
EN 301 489-1 V1.9.2: 09-2011
EN 301 489-17 V2.1.1: 09-2011
EN 50385 : 2002
EN 60950-1: 2006 + A11 : 2009 + A1 : 2010 + A12 : 2011

Declaration:

The product is herewith confirmed to comply with the requirements of Directive 1999/5/EC of the Council (European Parliament) on the radio and telecommunications terminal equipment and Energy-related products Directive 2009/125/EC.

I hereby declare that the products and devices mentioned above are consistent with the standards and provisions of the guidelines.

Sonny Su

Director of Technology

Full Name

Position/Title

July 16, 2012

Date

Signature

GPL/LGPL General Information

This TRENDnet product includes free software written by third party developers. These codes are subject to the GNU General Public License ("GPL") or GNU Lesser General Public License ("LGPL"). These codes are distributed WITHOUT WARRANTY and are subject to the copyrights of the developers. TRENDnet does not provide technical support for these codes. The details of the GNU GPL and LGPL are included in the product CD-ROM. Please also go to (<http://www.gnu.org/licenses/gpl.txt>) or (<http://www.gnu.org/licenses/lgpl.txt>) for specific terms of each license. The source codes are available for download from TRENDnet's web site (http://trendnet.com/downloads/list_gpl.asp) for at least three years from the product shipping date. You could also request the source codes by contacting TRENDnet. 20675 Manhattan Place, Torrance, CA 90501, USA. Tel: +1-310-961-5500 Fax: +1-310-961-5511.

Informations générales GPL/LGPL

Ce produit TRENDnet comprend un logiciel libre écrit par des programmeurs tiers. Ces codes sont sujet à la GNU General Public License ("GPL" Licence publique générale GNU) ou à la GNU Lesser General Public License ("LGPL" Licence publique générale limitée GNU). Ces codes sont distribués SANS GARANTIE et sont sujets aux droits d'auteurs des programmeurs. TRENDnet ne fournit pas d'assistance technique pour ces codes. Les détails concernant les GPL et LGPL GNU sont repris sur le CD-ROM du produit. Veuillez également vous rendre en (<http://www.gnu.org/licenses/gpl.txt>) ou en (<http://www.gnu.org/licenses/lgpl.txt>) pour les conditions spécifiques de chaque licence. Les codes source sont disponibles au téléchargement sur le site Internet de TRENDnet web site (http://trendnet.com/downloads/list_gpl.asp) durant au moins 3 ans à partir de la date d'expédition du produit. Vous pouvez également demander les codes source en contactant TRENDnet. 20675 Manhattan Place, Torrance, CA 90501, USA. Tel: +1-310-961-5500 Fax: +1-310-961-5511.

Allgemeine Informationen zu GPL/LGPL

Dieses Produkt enthält die freie Software "netfilter/iptables" (© 2000-2004 netfilter project <http://www.netfilter.org>) und die freie Software „Linux „mtd“ (Memory Technology Devices) Implementation (© 2000 David Woodhouse), erstmals integriert in Linux Version 2.4.0-test 3 v. 10.07.2000 (<http://www.kernel.org/pub/linux/kernel/v2.4/old-test-kernels/linux-2.4.0-test3.tar.bz2>), sowie weitere freie Software. Sie haben durch den Erwerb dieses Produktes keinerlei Gewährleistungsansprüche gegen die Berechtigten an der oben genannten Software erworben; weil diese die Software kostenfrei lizenzieren gewähren sie keine Haftung gemäß unten abgedruckten Lizenzbedingungen. Die Software darf von jedermann im Quell-und Objektcode unter Beachtung der Lizenzbedingungen der GNU General Public License Version 2, und GNU Lesser General Public License (LGPL) vervielfältigt, verbreitet und verarbeitet werden. Die Lizenz ist unten im englischsprachigen Originalwortlaut wiedergegeben. Eine nichtoffizielle Übersetzung in die deutsche Sprache finden Sie im Internet unter (<http://www.gnu.de/documents/gpl-2.0.de.html>). Eine allgemeine öffentliche GNU Lizenz befindet sich auch auf der mitgelieferten CD-ROM. Sie können Quell-und Objektcode der Software für mindestens drei Jahre auf unserer Homepage www.trendnet.com im Downloadbereich (http://trendnet.com/langen/downloads/list_gpl.asp) downloadend. Sofern Sie nicht über die Möglichkeit des Downloads verfügen können Sie bei TRENDnet. 20675 Manhattan Place, Torrance, CA 90501 -U.S.A -, Tel.: +1-310-961-5500, Fax: +1-310-961-5511 die Software anfordern.

Información general sobre la GPL/LGPL

Este producto de TRENDnet incluye un programa gratuito desarrollado por terceros. Estos códigos están sujetos a la Licencia pública general de GNU ("GPL") o la Licencia pública general limitada de GNU ("LGPL"). Estos códigos son distribuidos SIN GARANTÍA y están sujetos a las leyes de propiedad intelectual de sus desarrolladores. TRENDnet no ofrece servicio técnico para estos códigos. Los detalles sobre las licencias GPL y LGPL de GNU se incluyen en el CD-ROM del producto. Consulte también el (<http://www.gnu.org/licenses/gpl.txt>) ó el (<http://www.gnu.org/licenses/lgpl.txt>) para ver las cláusulas específicas de cada licencia. Los códigos fuentes están disponibles para ser descargados del sitio Web de TRENDnet (http://trendnet.com/downloads/list_gpl.asp) durante por lo menos tres años a partir de la fecha de envío del producto. También puede solicitar el código fuente llamando a TRENDnet. 20675 Manhattan Place, Torrance, CA 90501, USA. Tel: +1-310-961-5500 Fax: +1-310-961-5511

Общая информация о лицензиях GPL/LGPL

В состав данного продукта TRENDnet входит бесплатное программное обеспечение, написанное сторонними разработчиками. Это ПО распространяется на условиях лицензий GNU General Public License ("GPL") или GNU Lesser General Public License ("LGPL"). Программы распространяются БЕЗ ГАРАНТИИ и охраняются авторскими правами разработчиков. TRENDnet не оказывает технической поддержку этого программного обеспечения. Подробное описание лицензий GNU GPL и LGPL можно найти на компакт-диске, прилагаемом к продукту. В пунктах (<http://www.gnu.org/licenses/gpl.txt>) и (<http://www.gnu.org/licenses/lgpl.txt>) изложены конкретные условия каждой из лицензий. Исходный код программ доступен для загрузки с веб-сайта TRENDnet (http://trendnet.com/downloads/list_gpl.asp) в течение, как минимум, трех лет со дня поставки продукта. Кроме того, исходный код можно запросить по адресу TRENDnet, 20675 Manhattan Place, Torrance, CA 90501, USA. Tel: +1-310-961-5500 Fax: +1-310-961-5511.

GPL/LGPL informações Gerais

Este produto TRENDnet inclui software gratuito desenvolvido por terceiros. Estes códigos estão sujeitos ao GPL (GNU General Public License) ou ao LGPL (GNU Lesser General Public License). Estes códigos são distribuídos SEM GARANTIA e estão sujeitos aos direitos autorais dos desenvolvedores. TRENDnet não presta suporte técnico a estes códigos. Os detalhes do GNU GPL e do LGPL estão no CD-ROM do produto. Favor acessar <http://www.gnu.org/licenses/gpl.txt> ou <http://www.gnu.org/licenses/lgpl.txt> para os termos específicos de cada licença. Os códigos fonte estão disponíveis para download no site da TRENDnet (http://trendnet.com/langen/downloads/list_gpl.asp) por pelo menos três anos da data de embarque do produto. Você também pode solicitar os códigos fonte contactando TRENDnet, 20675 Manhattan Place, Torrance, CA 90501, USA. Tel: +1-310-961-5500, Fax: +1-310-961-5511.

GPL/LGPL üldinformatsioon

See TRENDneti toode sisaldab vaba tarkvara, mis on kirjutatud kolmanda osapoole poolt. Koodid on allutatud GNU (General Public License) Üldise Avaliku litsentsi (GPL) või GNU (Lesser General Public License) ("LGPL") Vähem Üldine Avalik Litsentsiga. Koode vahendatakse ILMA GARANTIITA ja need on allutatud arendajate poolt. TRENDnet ei anna koodidele tehnilist tuge. Detailsemat infot GNU GPL ja LGPL kohta leiate toote CD-ROMil. Infot mõlema litsentsi spetsiifiliste terminite kohta leiate (<http://www.gnu.org/licenses/gpl.txt>) või (<http://www.gnu.org/licenses/lgpl.txt>). Infot mõlema litsentsi spetsiifiliste terminite kohta leiate (<http://www.gnu.org/licenses/gpl.txt>) või (<http://www.gnu.org/licenses/lgpl.txt>). Lähtekoodi on võimalik alla laadida TRENDneti kodulehelt (http://trendnet.com/langen/downloads/list_gpl.asp) kolme aasta jooksul alates toote kättesaamise kuupäevast. Samuti võite lähtekoodi paluda TRENDneti'lt, 20675 Manhattan Place, Torrance, CA 90501, USA. Tel: +1-310-961-5500, Fax: +1-310-961-5511.



Product Warranty Registration

Please take a moment to register your product online.
Go to TRENDnet's website at <http://www.trendnet.com/register>

Certifications

This equipment has been tested and found to comply with FCC and CE Rules.
Operation is subject to the following two conditions:

- (1) This device may not cause harmful interference.
- (2) This device must accept any interference received. Including interference that may cause undesired operation.



Waste electrical and electronic products must not be disposed of with household waste. Please recycle where facilities exist. Check with you Local Authority or Retailer for recycling advice.



NOTE: THE MANUFACTURER IS NOT RESPONSIBLE FOR ANY RADIO OR TV INTERFERENCE CAUSED BY UNAUTHORIZED MODIFICATIONS TO THIS EQUIPMENT. SUCH MODIFICATIONS COULD VOID THE USER'S AUTHORITY TO OPERATE THE EQUIPMENT.

ADVERTENCIA

En todos nuestros equipos se mencionan claramente las características del adaptador de alimentación necesario para su funcionamiento. El uso de un adaptador distinto al mencionado puede producir daños físicos y/o daños al equipo conectado. El adaptador de alimentación debe operar con voltaje y frecuencia de la energía eléctrica domiciliar existente en el país o zona de instalación.

TRENDnet
20675 Manhattan Place
Torrance, CA 90501. USA