



Quick Installation Guide



TEW-624UB
TEW-644UB
H/W: V1

Table of Contents

Español	1
1. Antes de iniciar	1
2. Cómo se instala	2
3. Cómo usar el adaptador inalámbrico	4
Troubleshooting	6

1. Antes de iniciar



Contenidos del paquete

- TEW-624UB/TEW-644UB
- CD-ROM del controlador y la herramienta
- Guía de instalación rápida

Requisitos del sistema

- Puertos USB: 1.1 ó 2.0
- Unidad de CD-ROM
- CPU: 300MHz o superior (XP/2000) / 800MHz o superior (Windows Vista)
- Memoria: 256MB RAM o superior(XP/2000) / 512MB RAM o superior (Windows Vista)
- Windows 2000/XP/Vista

Aplicación

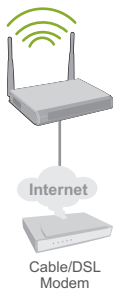
**Workstation with
Wireless N USB Adapter**
(TEW-644UB)



**300Mbps Wireless N
USB Adapter**
(TEW-624UB)



**Wireless N
Home Router**
(TEW-652BRP)



**Workstation with
Wireless N PCI Adapter**
(TEW-643PI)



**Notebook with
Wireless N PC Card**
(TEW-641PC)



Wireless N Speed

2. Cómo se instala

¡Importante! NO conecte el adaptador USB inalámbrico a su PC a menos que se le indique.

Nota: Para instrucciones de Mac OS X (10.4-10.5) por favor referirse a la Guía de Usuario. Los controladores Mac pueden encontrarse en el folder Mac OS X en el CD-ROM del controlador y herramienta.

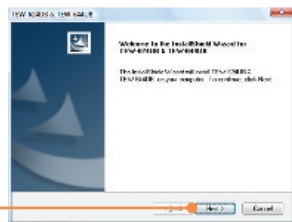
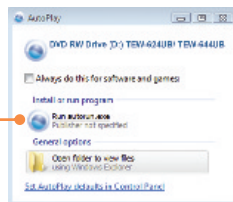
Para usuarios de Windows

1. Introduzca el **CD-ROM del controlador y de la herramienta** en la unidad de CD-ROM de su PC.

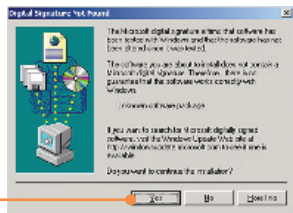
2. Haga clic en **Run autorun.exe** (sólo para Windows Vista).

3. Haga clic en **Install Drivers & Utility** (Instalar controlador y de la herramienta).

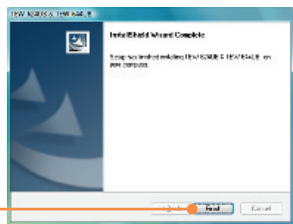
4. Haga clic en **Next (Siguiente)**. Y siga las instrucciones del **InstallShield Wizard** (Asistente de Install Shield).



5. Haga clic en **Yes (Sí)** (sólo para Windows 2000).



6. Haga clic en **Finish (Finalizar)**.

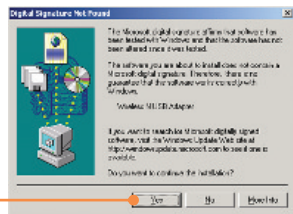


7. Conecte el adaptador inalámbrico a un puerto USB disponible de su PC.



8. Los controladores se instalarán automáticamente.

9. Haga clic en **Yes (Sí)** (sólo para Windows 2000).



La instalación ha sido completada

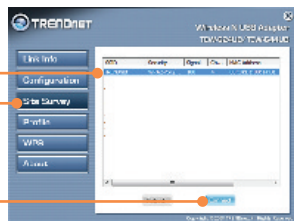
Para obtener información más detallada sobre la configuración así como de las configuraciones avanzadas del **TEW-624UB/TEW-644UB**, por favor consulte la sección de resolución de problemas, el CD-ROM de la Guía del Usuario, o el sitio Web de Trendnet en <http://www.trendnet.com>.

3. Cómo usar el adaptador inalámbrico

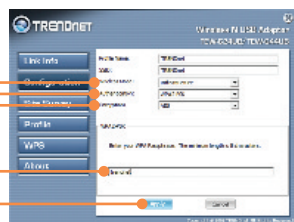
1. En la esquina derecha inferior de la pantalla, haga doble clic en el icono **TEW-624UB & TEW-644UB manager** (Administrador de TEW-624UB y TEW-644UB).



2. Haga clic en **Site Survey** (Inspección de sitio), seleccione el SSID y luego haga clic en **Connect** (Conectar).



3. Si la encriptación está habilitada en su punto de acceso, seleccione el tipo de **Autenticación** y el modo de **Encriptación**, después introduzca la clave de encriptación y finalmente haga clic en **Apply** (Aplicar).



La configuración inalámbrica ha finalizado

Para obtener información más detallada sobre la configuración así como de las configuraciones avanzadas del **TEW-624UB/TEW-644UB**, por favor consulte la sección de resolución de problemas, el CD-ROM de la Guía del Usuario, o el sitio Web de Trendnet en <http://www.trendnet.com>.

Registre su producto

Para asegurar los más altos niveles de servicio y apoyo al cliente, registre su producto en línea en: www.trendnet.com/register
Gracias por elegir TRENDnet

Q1: I inserted the Utility & Driver CD-ROM into my computer's CD-ROM Drive and the installation menu does not appear automatically. What should I do?

A1: For Windows 2000/XP, if the installation menu does not appear automatically, click **Start**, click **Run**, and type **D:\autorun.exe** where "D" in "D:\autorun.exe" is the letter assigned to your CD-ROM Drive, and then press the ENTER key on your keyboard. For Windows Vista, if the installation menu does not appear automatically, click **Start**, click the **Start Search** box, and type **D:\autorun.exe** where "D" in "D:\autorun.exe" is the letter assigned to your CD-ROM Drive, and then press the ENTER key on your keyboard.

Q2: How do I install the TEW-624UB/TEW-644UB on my Mac?

A2: First, verify that you have Mac OS X 10.4 or 10.5. The TEW-624UB/TEW-644UB does not support any other version of Mac. Second, refer to the User's Guide for step-by-step instructions. The Mac drivers can be found in the Mac OS X folder on the Utility and Driver CD-ROM drive.

Q3: I completed all the steps in the quick installation guide, but my Wireless USB Adapter is not connecting to my access point. What should I do?

A3: First, verify that the **SSID** matches your wireless router or access point's **SSID**. Second, please check with your network administrator for security key in order to access a secured wireless access point or router. Please refer to the User's Guide for more information regarding wireless network security. Third, check your TCP/IP properties to ensure that Obtain an IP address automatically is selected. Fourth, double-click the TEW-624UB & TEW-644UB Manager icon, click **Site Survey** and then click **Refresh** to check and see if there are any available wireless networks listed.

Q4: Windows is unable to recognize my hardware. What should I do?

A4: First, make sure your computer meets the minimum requirements as specified in Section 1 of this quick installation guide. Second, you must complete the installation of the TEW-624UB & TEW-644UB Manager (as described in Section 2) before connecting the Wireless USB Adapter to your computer. Third, connect the Wireless USB Adapter to a different USB port on your computer.

Q5: I cannot open the TEW-624UB & TEW-644UB Manager. What should I do?

A5: Access your device manager to make sure the adapter is installed properly. If you see a networking device with a yellow question mark or exclamation point, you will need to reinstall the device and/or the drivers. To access the device manager on Windows 2000/XP, right-click **My Computer**, click **Properties**, click the **Hardware** tab, and then click **Device Manager**. To access the device manager on Windows Vista, right-click **Computer**, click **Properties** and then click **Device Manager**.

If you still encounter problems or have any questions regarding the **TEW-624UB/TEW-644UB**, please refer to the User's Guide included on the Utility & Driver CD-ROM or contact TRENDnet's Technical Support Department.

Declaration of Conformity



Company

Name:
TRENDware International, Inc.

Address
20675 Manhattan Place
Torrance, CA 90501
USA

Product:

Product Name:
300Mbps Wireless N USB 2.0 Adapter



Model Number:
TEW-624UB

Brand Name:
TRENDnet

Test Standard:

EN 300 328 V1.7.1: 10-2006
EN 301 489-1 V1.5.1: 11-2004
EN 301 489-17 V1.2.1: 08-2002
EN 50371: 2002
EN 50392: 2004
EN 60950-1: 2001
EN 60950-1/A11: 2004

Declaration:

The objects of declaration described above are compliant and following the provisions of the European R&TTE 1999/5/EC

I hereby declare that the products and devices mentioned above are consistent with the standards and provisions of the guidelines.

Sonny Su
Name (Full Name)

Director of Technology
Position / Title

February 1, 2009
Date

Legal Signature

Declaration of Conformity



Company

Name:

TRENDware International, Inc.

Address

20675 Manhattan Place

Torrance, CA 90501

USA

Product:

Product Name:

Wireless N USB Adapter



Model Number:

TEW-644UB

Brand Name:

TRENDnet

Test Standards:

EN 300 328 V1.7.1: 10-2006

EN 301 489-1 V1.6.1: 09-2005

EN 301 489-17 V1.2.1: 08-2002

EN 50392: 2004

EN 60950-1: 2006

Declaration:

The objects of declaration described above are compliant and following the provisions of the European R&TTE 1999/5/EC

I hereby declare that the products and devices mentioned above are consistent with the standards and provisions of the guidelines.

Sonny Su

Name (Full Name)

February 1, 2009

Date

Director of Technology

Position / Title

Legal Signature

Certifications

This equipment has been tested and found to comply with FCC and CE Rules.

Operation is subject to the following two conditions:

- (1) This device may not cause harmful interference.
- (2) This device must accept any interference received. Including interference that may cause undesired operation.



Waste electrical and electronic products must not be disposed of with household waste. Please recycle where facilities exist. Check with you Local Authority or Retailer for recycling advice.



NOTE: THE MANUFACTURER IS NOT RESPONSIBLE FOR ANY RADIO OR TV INTERFERENCE CAUSED BY UNAUTHORIZED MODIFICATIONS TO THIS EQUIPMENT. SUCH MODIFICATIONS COULD VOID THE USER'S AUTHORITY TO OPERATE THE EQUIPMENT.

ADVERTENCIA

En todos nuestros equipos se mencionan claramente las características del adaptador de alimentación necesario para su funcionamiento. El uso de un adaptador distinto al mencionado puede producir daños físicos y/o daños al equipo conectado. El adaptador de alimentación debe operar con voltaje y frecuencia de la energía eléctrica domiciliar existente en el país o zona de instalación.



TRENDnet[®]

Product Warranty Registration

Please take a moment to register your product online.
Go to TRENDnet's website at <http://www.trendnet.com/register>

TRENDnet[®]

20675 Manhattan Place
Torrance, CA 90501
USA