



Quick Installation Guide



TEW-644UB

H/W: V1.0R

Table of Contents

English	1
1. Before You Start	1
2. How to Install	2
3. Using the Wireless Adapter	6
Troubleshooting	7

1. Before You Start



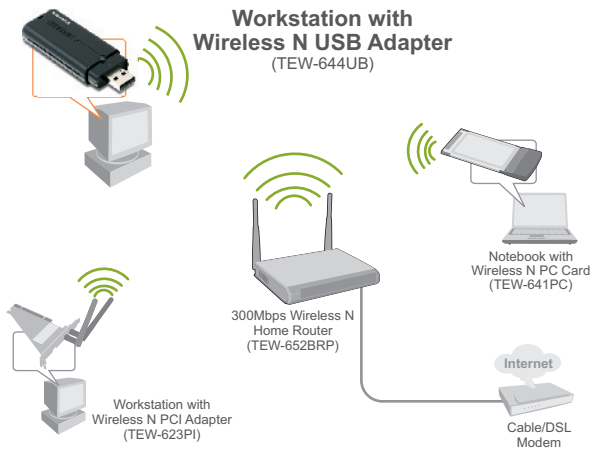
Package Contents

- TEW-644UB
- Utility & Driver CD-ROM
- Quick Installation Guide

System Requirements

- USB port: 2.0 or 1.1
- CD-ROM Drive
- CPU: 300MHz or above / 800MHz or above (Windows Vista)
- Memory: 256MB RAM or above / 512MB RAM or above (Windows Vista)
- Windows 2000/XP/Vista

Application



2. How to Install

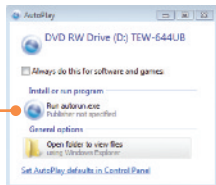
Important! DO NOT install the USB adapter in the computer until instructed to do so.

For Windows Users

Note: For Windows Vista, continue on to step 3 or step 6

1. Insert the **Utility & Driver CD-ROM** into your computer's CD-ROM Drive.

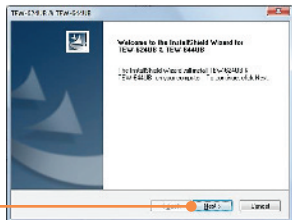
2. Click **Run autorun.exe** (Windows Vista only).



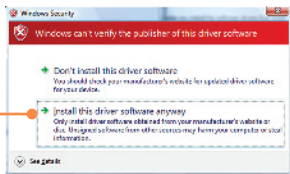
3. Click **Install Utility**. Then click your operating system.



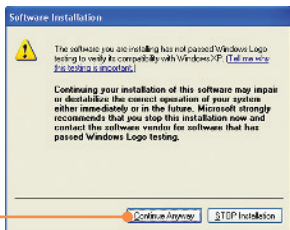
4. Click **Next**. Then follow the **InstallShield Wizard** instructions.



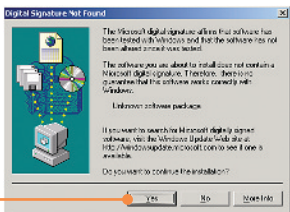
5. Click **Install this driver software anyway** (Windows Vista).



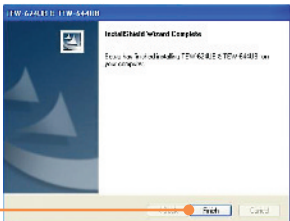
6. Click **Continue Anyway** (Windows XP).



7. Click **Yes** (Windows 2000).



8. Click **Finish**.



9. Connect the wireless adapter to an available USB port on your computer.



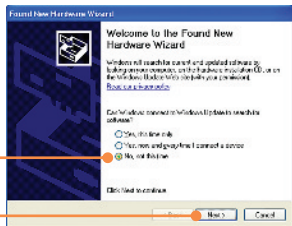
Note: For Windows XP, proceed to step 11. For Windows 2000, proceed to step 15. For Windows Vista, continue on to step 10.

Windows Vista

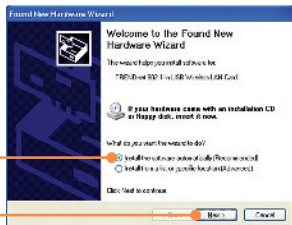
10. Drivers will install automatically.

Windows XP

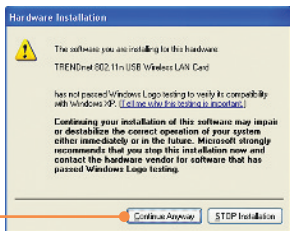
11. The Found New Hardware Wizard appears. Select **No**, not this time and then click **Next**.



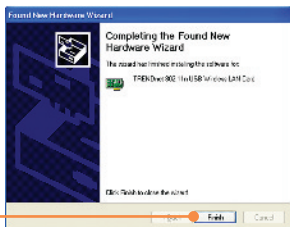
12. Click **Install the software automatically** and then click **Next**.



13. Click **Continue Anyway**
(Windows XP).

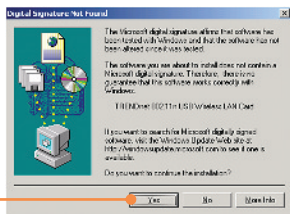


14. Click **Finish**.



Windows 2000

15. Click **Yes**.



Your installation is now complete.

For detailed information regarding the TEW-644UB configuration and advanced settings, please refer to the User's Guide included on the Utility & Driver CD-ROM or TRENDnet's website at www.trendnet.com

Register Your Product

To ensure the highest level of customer service and support, please take a moment to register your product Online at: www.trendnet.com/register
Thank you for choosing TRENDnet

3. Using the Wireless Adapter

Windows 2000/XP/Vista

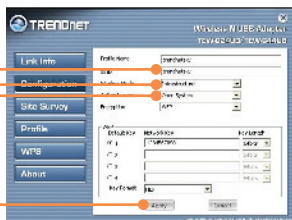
1. On the bottom right-hand corner of the screen, **double-click** on the **wireless client utility** icon.



2. Click **Site Survey**, select the **SSID** and then click **Connect**.



3. If Encryption is enabled on your access point, select the Authentication and Encryption, enter the encryption key and then click **Apply**.



Wireless configuration is now complete.

For detailed information regarding the TEW-644UB configuration and advanced settings, please refer to the User's Guide included on the Utility & Driver CD-ROM or TRENDnet's website at www.trendnet.com

Register Your Product

To ensure the highest level of customer service and support, please take a moment to register your product Online at: www.trendnet.com/register

Thank you for choosing TRENDnet

Q1: I inserted the Utility & Driver CD-ROM into my computer's CD-ROM Drive but the installation menu does not appear automatically. What should I do?

A1: If the window does not appear automatically, click Start, click Run, and type D:\autorun.exe where "D" in "D:\autorun.exe" is the letter assigned to your CD-ROM Drive, and then press the ENTER key on your keyboard.

Q2: I completed all the steps in the quick installation guide, but my Wireless USB Adapter is not connecting to my access point. What should I do?

A2: First, verify that the Network Name (SSID) matches your wireless router or access point's Network Name (SSID). Second, please check with your network administrator for security key in order to access a secured wireless access point or router. Please refer to the User's Guide for more information regarding wireless network security. Third, check your TCP/IP properties to ensure that Obtain an IP address automatically is selected. Fourth, double-click the Wireless Client Utility icon, click Site Survey and then click Refresh to check and see if there are any available wireless networks listed.

Q3: Windows is unable to recognize my hardware. What should I do?

A3: Make sure your computer meets the minimum requirements as specified in Section 1 of this quick installation guide. Also, you must complete the installation of the wireless configuration utility (as described in Section 2) before connecting the Wireless USB Adapter to your computer. Lastly, you may consider moving the Wireless USB Adapter to a different USB port of your computer.

Q4: I cannot open the wireless configuration utility. What should I do?

A4: Access your device manager to make sure the adapter is installed properly. If you see a networking device with a yellow question mark or exclamation point, you will need to reinstall the device and/or the drivers. To access your device manager, right-click **My Computer**, click **Properties**, under the **Hardware** tab click **Device Manager**.

If you still encounter problems or have any questions regarding the TEW-644UB, please refer to the User's Guide included on the Utility & Driver CD-ROM or contact Trendnet's Technical Support Department.

Certifications

This equipment has been tested and found to comply with FCC and CE Rules.

Operation is subject to the following two conditions:

- (1) This device may not cause harmful interference.
- (2) This device must accept any interference received. Including interference that may cause undesired operation.



Waste electrical and electronic products must not be disposed of with household waste. Please recycle where facilities exist. Check with you Local Authority or Retailer for recycling advice.



NOTE: THE MANUFACTURER IS NOT RESPONSIBLE FOR ANY RADIO OR TV INTERFERENCE CAUSED BY UNAUTHORIZED MODIFICATIONS TO THIS EQUIPMENT. SUCH MODIFICATIONS COULD VOID THE USER'S AUTHORITY TO OPERATE THE EQUIPMENT.

ADVERTENCIA

En todos nuestros equipos se mencionan claramente las características del adaptador de alimentación necesario para su funcionamiento. El uso de un adaptador distinto al mencionado puede producir daños físicos y/o daños al equipo conectado. El adaptador de alimentación debe operar con voltaje y frecuencia de la energía eléctrica domiciliar existente en el país o zona de instalación.



Product Warranty Registration

Please take a moment to register your product online.
Go to TRENDnet's website at <http://www.trendnet.com/register>

TRENDnet[®]
20675 Manhattan Place
Torrance, CA 90501
USA