



## Quick Installation Guide



**TEW-623PI**

# Table of Contents

English .....	1
1. Before You Start .....	1
2. How to Install .....	2
3. Using the Wireless Adapter .....	8
Troubleshooting .....	11

# 1. Before You Start



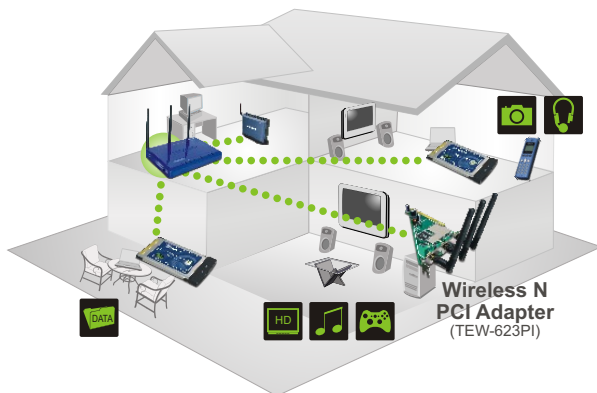
## Package Contents

- TEW-623PI
- Quick Installation Guide
- Utility & Driver CD-ROM
- 3 x 2dbi Antennas

## System Requirements

- 32-bit PCI 2.1 or above slot
- CD-ROM Drive
- CPU: 300MHz or above/ 800MHz or above (Windows Vista)
- Memory: 256 MB RAM or above/ 512 MB RAM or above (Windows Vista)
- Windows Vista/XP/2000

## Application



..... 300Mbps, share multimedia throughout the house

## 2. How to Install

**Important!** DO NOT install the PC Adapter in the computer until instructed to do so.

### Windows Vista

1. Insert the **Utility & Driver CD-ROM** into your computer's CD-ROM Drive and then click **Install Driver & Utility**.

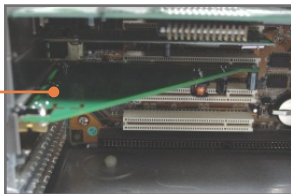


2. **Shutdown** your computer.

3. Open your computer's case.



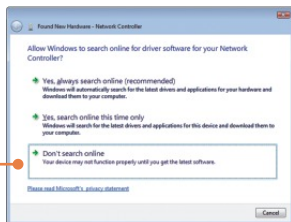
4. Insert PCI Card firmly into an available PCI Card slot of the desktop PC, attach the included antenna, and then turn **ON** the computer and wait until the Windows desktop appears.



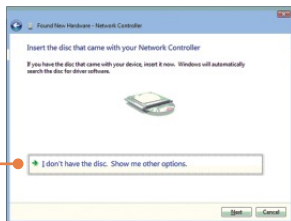
5. Click **Locate and install driver software (recommended)**.



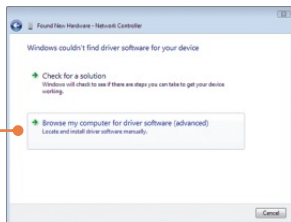
6. Click **Don't search online.**



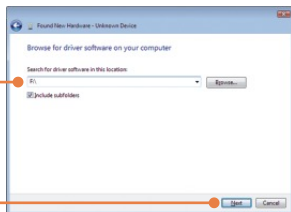
7. Click **I don't have the disc. Show me other options.**



8. Click **Browse my computer for driver software (advanced).**



9. Type in F:\. Then click **next** or click **browse** to locate the drivers.

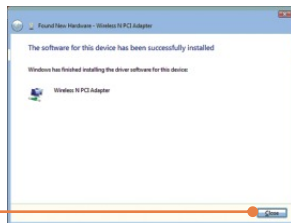


Note: F:\ represents the drive letter that is assigned to your CD-ROM drive.

10. Click **Install the driver software anyway**.



11. Click **Close**.



## Windows XP/2000

1. Insert the **Utility & Driver CD-ROM** into your computer's CD-ROM Drive and then click **Install Driver & Utility**.



2. Follow the **InstallShield Wizard** instructions.

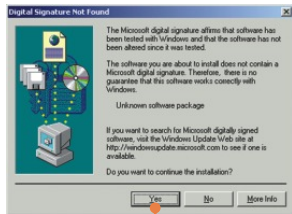
## Windows XP



3. Click **Continue Anyway**).

4. Click **Finish**.

## Windows 2000



3. Click **Yes**. Proceed to step 5.

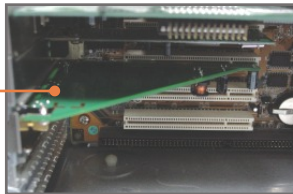
Note: Please refer to your computer's user manual regarding hardware installation.

5. **Shutdown** your computer.

6. Open your computer's case.



7. Insert PCI Card firmly into an available PCI Card slot of the desktop PC, attach the included antenna, and then turn **ON** the computer and wait until the Windows desktop appears.



## Windows XP

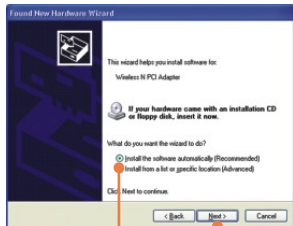


8. The **Found New Hardware Wizard** appears. Select **No, not this time** and then click **Next**.

## Windows 2000



9. Click **Yes**. Driver installation is now complete. Continue on to section 3.



9. Select **Install the software automatically (Recommended)** and then click **Next**.



## Windows XP

10. Click **Continue Anyway**.



11. Click **Finish**.

**Your installation is now complete.**

### Register Your Product

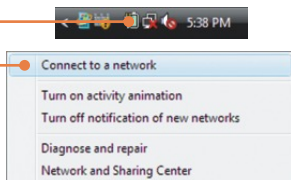
To ensure the highest level of customer service and support, please take a moment to register your product Online at: [www.trendnet.com/register](http://www.trendnet.com/register)  
Thank you for choosing TRENDnet

# 3. Using the Wireless Adapter

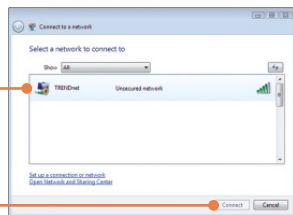
## Windows Vista

### Connecting to an Unsecured Wireless Connection

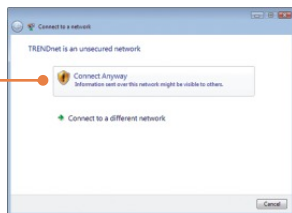
1. On the bottom right-hand corner of the screen, right click the wireless network connection icon and select **Connect to a network**.



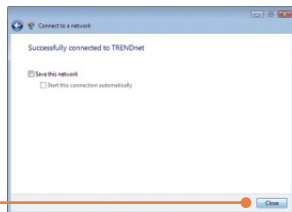
2. Select the desired network and then click **Connect**.



3. Click **Connect Anyway**.



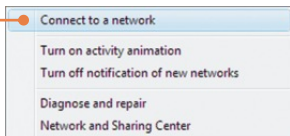
4. Click **Close**.



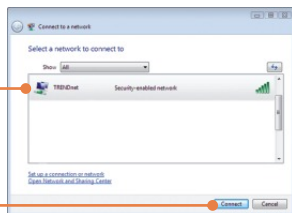
## Connecting to a Secured Wireless Connection (WEP-PSK and WPA-PSK)

Note: Make sure you know the wireless encryption key before proceeding. If you are not sure, contact the network administrator or log on to your wireless router.

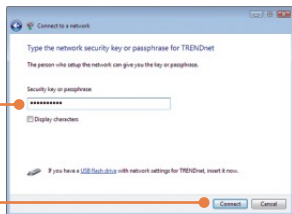
1. On the bottom right-hand corner of the screen, right click the wireless network connection icon and select **Connect to a network**.



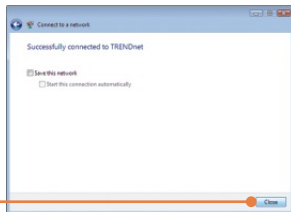
2. Select the desired network and then click **Connect**.



3. Enter the security key and then click **Connect**.

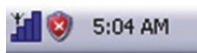


4. Click **Close**.



## Windows XP/2000

1. Double-click the **Wireless** icon in your system tray.



2. Click **Site Survey**.



3. Click the **SSID** that matches your wireless access point and then click **Connect**.



**Wireless configuration is now complete.**

For detailed information regarding the TEW-623PI configuration and advanced settings, please refer to the User's Guide included on the Utility & Driver CD-ROM or TRENDnet's website at [www.trendnet.com](http://www.trendnet.com)

**Q1: I inserted the Utility & Driver CD-ROM into my computer's CD-ROM Drive and the installation menu does not appear automatically. What should I do?**

**A1:** If the window does not appear automatically, click Start, click Run, and type D:\autorun where "D" in "D:\autorun.exe" is the letter assigned to your CD-ROM Drive, and then press the ENTER key on your keyboard.

**Q2: I completed all the steps in the quick installation guide, but my Wireless PCI Adapter is not connecting to my access point. What should I do?**

**A2:** First, verify that the Network Name (SSID) matches your wireless router or access point's Network Name (SSID). Second, please check with your network administrator for security key in order to access a secured wireless access point or router. Please refer to the User's Guide for more information regarding wireless network security. Third, check your TCP/IP properties to ensure that Obtain an IP address automatically is selected. Fourth, double-click the Wireless Client Utility icon, click Site Survey and then click Refresh to check and see if there are any available wireless networks listed.

**Q3: Windows is unable to recognize my hardware. What should I do?**

**A3:** Make sure your computer meets the minimum requirements as specified in Section 1 of this quick installation guide. Also, you must complete the installation of the wireless configuration utility (as described in Section 2) before installing the Wireless PCI Adapter to your computer. Lastly, move the Wireless PCI Adapter to a different PCI port of your computer.

**Q4: I cannot open the wireless configuration utility. What should I do?**

**A4:** Access your device manager to make sure the adapter is installed properly. If you see a networking device with a yellow question mark or exclamation point, you will need to reinstall the device and/or the drivers. To access your device manager, right-click My Computer, click Properties, under the Hardware tab click Device Manager.

If you still encounter problems or have any questions regarding the TEW-623PI, please refer to the User's Guide included on the Utility & Driver CD-ROM or contact TRENDnet's Technical Support Department.

## Certifications

This equipment has been tested and found to comply with FCC and CE Rules.

Operation is subject to the following two conditions:

- (1) This device may not cause harmful interference.
- (2) This device must accept any interference received. Including interference that may cause undesired operation.



Waste electrical and electronic products must not be disposed of with household waste. Please recycle where facilities exist. Check with you Local Authority or Retailer for recycling advice.



**NOTE:** THE MANUFACTURER IS NOT RESPONSIBLE FOR ANY RADIO OR TV INTERFERENCE CAUSED BY UNAUTHORIZED MODIFICATIONS TO THIS EQUIPMENT. SUCH MODIFICATIONS COULD VOID THE USER'S AUTHORITY TO OPERATE THE EQUIPMENT.

## ADVERTENCIA

En todos nuestros equipos se mencionan claramente las características del adaptador de alimentación necesario para su funcionamiento. El uso de un adaptador distinto al mencionado puede producir daños físicos y/o daños al equipo conectado. El adaptador de alimentación debe operar con voltaje y frecuencia de la energía eléctrica domiciliar existente en el país o zona de instalación.



## TRENDnet Technical Support

### US • Canada

**Toll Free Telephone:** 1(866) 845-3673

24/7 Tech Support



### Europe (Germany • France • Italy • Spain • Switzerland • UK)

**Toll Free Telephone:** +00800 60 76 76 67

English/Espanol - 24/7

Francais/Deutsch - 11 am-8pm, Monday - Friday MET

### Worldwide

**Telephone:** +{31} (0) 20 504 05 35

English/Espanol - 24/7

Francais/Deutsch - 11 am-8pm, Monday - Friday MET

## Product Warranty Registration

Please take a moment to register your product online.

Go to TRENDnet's website at <http://www.trendnet.com/register>

**TRENDnet**<sup>®</sup>  
20675 Manhattan Place  
Torrance, CA 90501  
USA