



Quick Installation Guide



TEW-621PC

Table of Contents

Español	1
1. Antes de iniciar	1
2. Cómo se instala	2
3. Cómo usar el adaptador inalámbrico	5
Troubleshooting	6

1. Antes de iniciar



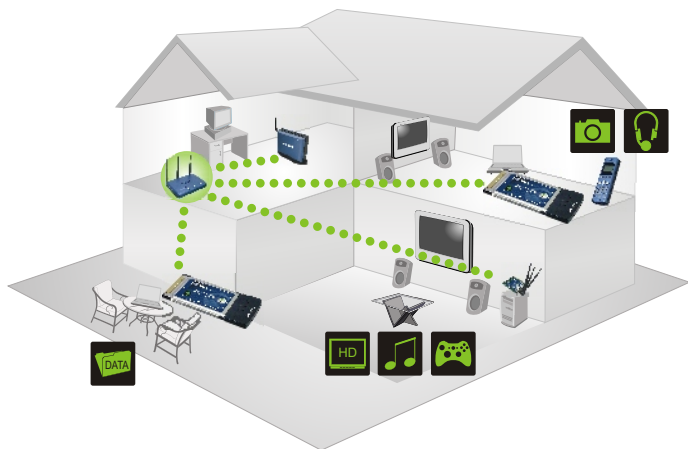
Contenidos del paquete

- TEW-621PC
- Guía de instalación rápida
- CD-ROM del controlador y la herramienta

Requisitos del sistema

- Ranura para Tarjeta Tipo II CardBus de 32 bits
- Unidad de CD-ROM
- CPU: Intel Pentium 300 MHz o superior
- Memoria: 64 MB o superior
- Windows XP/2000

Aplicación



2. Cómo se instala

¡**Importante!** NO instale el adaptador PC en el PC hasta que no se le indique.

1. Introduzca el **CD-ROM del controlador y de la herramienta** en la unidad de CD-ROM de su PC y luego haga clic en **Install Driver & Utility** (Instalar controlador y herramienta).



2. Siga las instrucciones del **InstallShield Wizard** (Asistente de Install Shield). Cuando se le pida reiniciar su PC, seleccione **No** y luego haga clic en **Finish** (Finalizar).

3. Apague su PC.

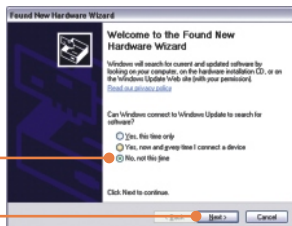
4. Introduzca la tarjeta PC de manera firme en la ranura para tarjeta PC disponible de su PC notebook, después **ENCIENDA** el PC y espere hasta que aparezca el escritorio de Windows.



Nota: Para Windows 2000, vaya al paso 9. Para Windows XP, vaya al paso 5.

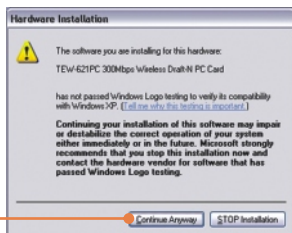
Windows XP

5. Le aparecerá la ventana **Found New Hardware** (Nuevo hardware encontrado). Seleccione **No** y haga clic en **Next** (Siguiente).



6. Seleccione **Install the software automatically** (Instalar el software automáticamente) y luego pulse **Next** (Siguiente).

7. Haga clic en **Continue Anyway** (Continuar de todas formas).

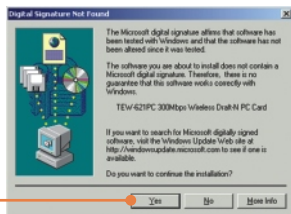


8. Haga clic en **Finish** (Finalizar). Continúe en la Sección 3.

Windows 2000

9. Los controladores se instalarán de manera automática.

10. Haga clic en **Yes (Sí)**.

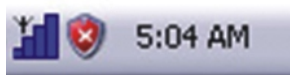


La instalación ha sido completada

Para obtener información más detallada sobre la configuración así como de las configuraciones avanzadas del TEW-621PC , por favor consulte la sección de resolución de problemas, el CD-ROM de la Guía del Usuario, o el sitio Web de Trendnet en <http://www.trendnet.com>.

3. Cómo usar el adaptador inalámbrico

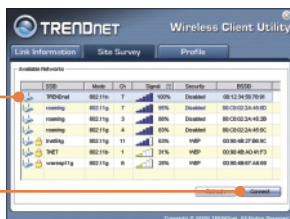
1. Haga doble clic en el icono **inalámbrico** del PC en la bandeja del sistema .



2. Haga clic en **Site Survey** (Inspección del sitio).



3. Seleccione el SSID que corresponda con su punto de acceso inalámbrico, luego pulse **Connect** (Conectar).



La configuración inalámbrica ha finalizado

Para obtener información más detallada sobre la configuración así como de las configuraciones avanzadas del TEW-621PC , por favor consulte la sección de resolución de problemas, el CD-ROM de la Guía del Usuario, o el sitio Web de Trendnet en <http://www.trendnet.com>.

Q1: I inserted the TEW-621PC CD-ROM into my computer's CD-ROM Drive and the installation menu does not appear automatically. What should I do?

A1: If the installation menu does not appear automatically, click Start, click Run, and type D:\Autorun.exe where "D" in "D:\Autorun.exe" is the letter assigned to your computer's CD-ROM Drive. And then click OK to start the installation.

Q2: I completed all the steps in the quick installation guide, but my card is not connecting to my access point. What should I do?

A2: You should first verify that the Network Name (SSID) matches your wireless router or access point's SSID. If they already match, you should check your TCP/IP properties to ensure that Obtain an IP Address Automatically is selected. Refer to your Windows User's Manual if you are unable to locate your TCP/IP properties.

Q3: Windows is unable to recognize my hardware. What should I do?

A3: Make sure your computer meets the minimum requirements as specified in Section 1 of this quick installation guide. Also, you must install the wireless configuration utility BEFORE you physically install your network card. Lastly, you may consider moving the card to a different PC Card Slot.

Q4: I cannot open the wireless configuration utility. What should I do?

A4: Access your device manager to make sure the adapter is installed properly. If you see a networking device with a yellow question mark or exclamation point, you will need to reinstall the device and/or the drivers. To access your device manager, right-click My Computer, click Properties, click the Hardware tab, and then click Device Manager.

If you still encounter problems or have any questions regarding the TEW-621PC, please refer to the User's Guide included on the Utility & Driver CD-ROM or contact Trendnet's Technical Support Department.

Certifications

This equipment has been tested and found to comply with FCC and CE Rules.

Operation is subject to the following two conditions:

- (1) This device may not cause harmful interference.
- (2) This device must accept any interference received. Including interference that may cause undesired operation.



Waste electrical and electronic products must not be disposed of with household waste. Please recycle where facilities exist. Check with you Local Authority or Retailer for recycling advice.



NOTE: THE MANUFACTURER IS NOT RESPONSIBLE FOR ANY RADIO OR TV INTERFERENCE CAUSED BY UNAUTHORIZED MODIFICATIONS TO THIS EQUIPMENT. SUCH MODIFICATIONS COULD VOID THE USER'S AUTHORITY TO OPERATE THE EQUIPMENT.



TRENDnet Technical Support

US • Canada

Toll Free Telephone: 1(866) 845-3673
24/7 Tech Support



Europe (Germany • France • Italy • Spain • Switzerland • UK)

Toll Free Telephone: +00800 60 76 76 67
English/Espanol - 24/7
Francais/Deutsch - 11 am-8pm, Monday - Friday MET

Worldwide

Telephone: +(31) (0) 20 504 05 35
English/Espanol - 24/7
Francais/Deutsch - 11 am-8pm, Monday - Friday MET

Product Warranty Registration

Please take a moment to register your product online.
Go to TRENDnet's website at <http://www.trendnet.com>

TRENDnet
3135 Kashiwa Street
Torrance, CA 90505
USA