

TEW-601PC

Quick Installation Guide

Version 08.05.2005



Table of Contents

English	1
1. Prepare for Installation	1
2. Install Wireless Configuration Utility	2
3. Install Hardware	5
4. Install Drivers	6
5. Wireless Configuration	8
Româna	9
1. Pregatiti-va de instalare	9
2. Instalarea programului Wireless Configuration Utility ...	10
3. Instalare fizica	13
4. Instalare drivere	14
5. Configurarea Wireless	16
Troubleshooting.....	17

English

1. Prepare for Installation

Thank you for purchasing the TEW-601PC. Your new wireless network adapter will allow you to share the Internet, files, or other resources by connecting you to an 802.11g or 802.11b wireless network. This guide will help you setup and configure your wireless card. Following the installation instructions should be quick and easy. If you run into problems, please refer to the Troubleshooting section or the more detailed installation procedures on the User's Guide CD-ROM. If you need further technical support, please visit www.TRENDNET.com or call by phone.

Verify Package Contents

Please make sure you have everything in the box:



Verify Equipment

Before installing this PC Card, you should have a:

1. Computer with an available 32-bit 3.3V CardBus
2. 300 MHz processor and 32 MB of memory (Recommended)
3. CD-ROM drive
4. Properly-installed CardBus Controller
5. 802.11g/802.11b Access Point (for Infrastructure Mode) or another 802.11g/802.11b wireless adapter (for Ad-Hoc/Peer-to-Peer networking mode).

Important! DO NOT install the PC Card in the computer until instructed to do so. Please follow the instructions in Section 2 before installing the adapter into your computer.

2. Install Wireless Configuration Utility

Windows 2000/XP

1. Insert the TEW-601PC CD-ROM into your computer's CD-ROM drive; the installation menu will appear automatically. If the window does not appear automatically, click **Start**, click **Run**, and type **E:\Autorun.exe** in the text-field. Click **OK** to start the installation.

NOTE: Replace “E” in “E:\Autorun.exe” with whichever letter is assigned to your CD-ROM drive.

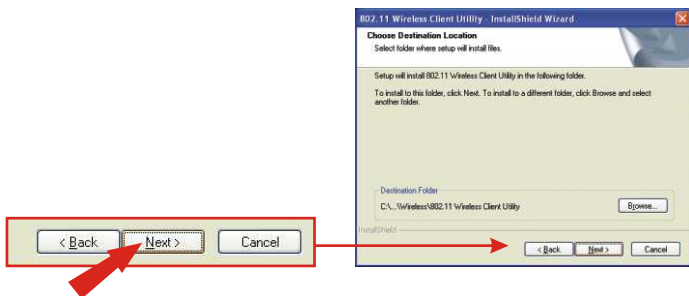
2. On the Installation Menu, click **Install Utility**.



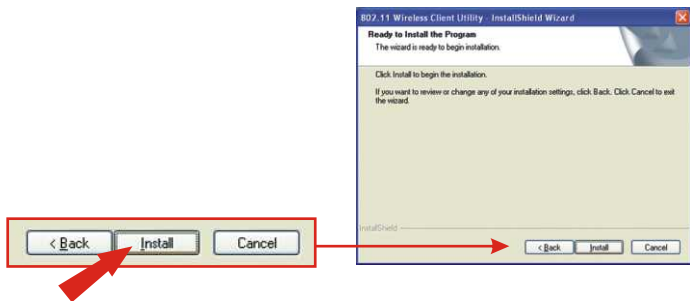
3. Click **Next**.



4. Click **Next**.



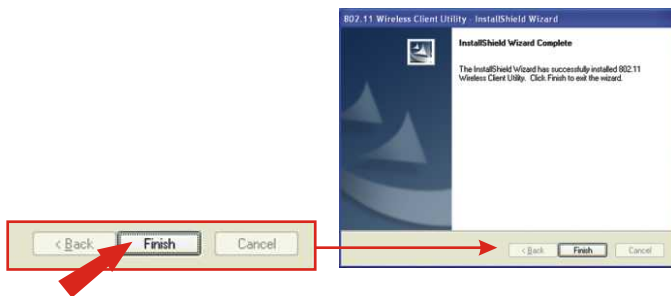
5. Click **Install**.



6. A warning message will tell you that the device you're installing has not yet been certified for Windows XP compatibility. Click **Continue Anyway**. For Windows 2000, click **Yes**.



7. Click **Finish**.



3. Install Hardware

If you are installing the TEW-601PC Wireless PC Card:

Proceed only if you have already completed the steps in Section 2

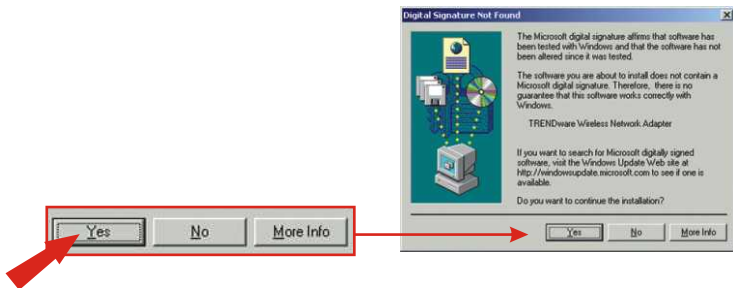
1. Shut down your computer.
2. Insert the PC Card firmly into your notebook PC's open PC Card slot. Only the plastic end-piece should protrude from the slot.
3. Reboot your computer.



4. Install Drivers

Windows 2000

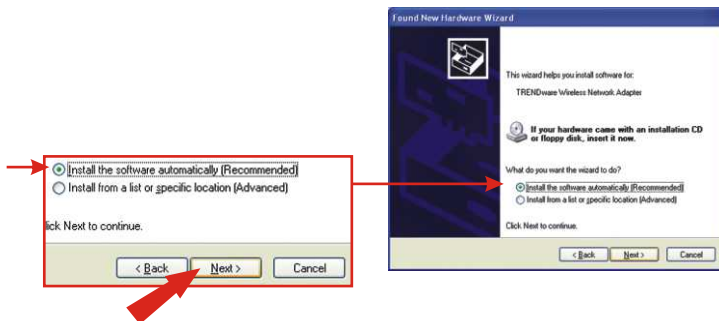
1. After rebooting your computer, a message will tell you that the driver you are about to install “does not contain a digital signature” and will ask you if you want to continue the installation. Click **Yes**.



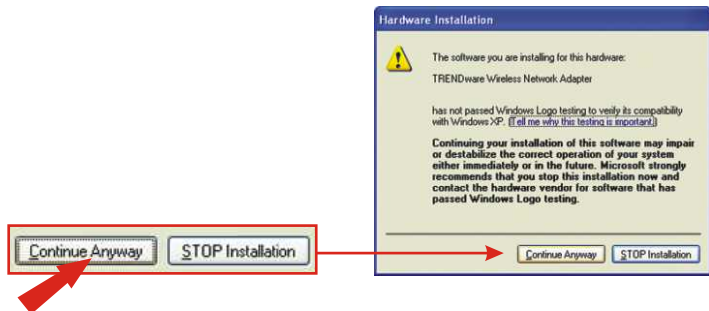
2. Continue to Section 5 of this Quick Installation Guide to continue configuring your wireless card.

Windows XP

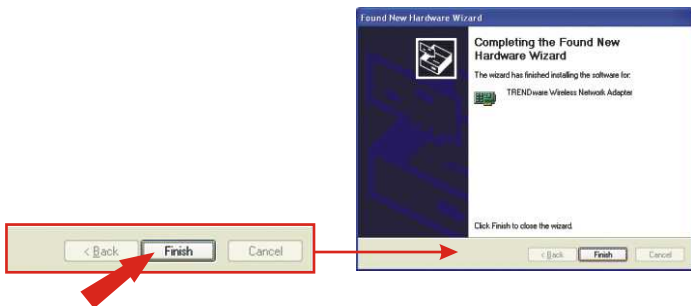
1. After your computer reboots, the “Found New Hardware Wizard” will appear. Select **Install the software automatically** and click **Next**.



2. A warning message will tell you that the device you're installing has not yet been certified for Windows XP compatibility. Click **Continue Anyway**.



3. Click **Finish**.



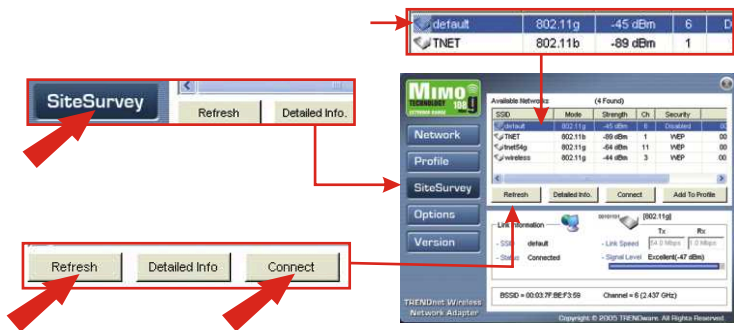
Continue to Section 5 of this Quick Installation Guide to continue configuring your wireless card.

5. Wireless Configuration

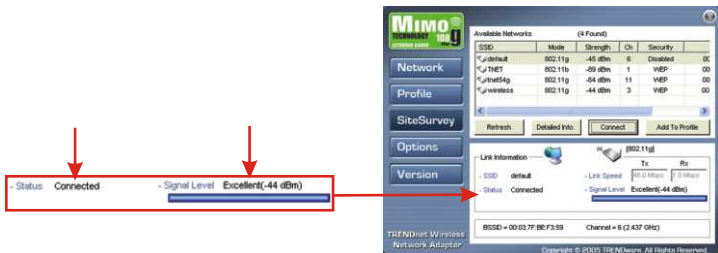
1. Double-click the wireless icon in your system tray (next to the clock in the bottom right corner of your screen).



2. Click **Site Survey**, click **Refresh**, and select the desired access point. Click **Connect**.



3. Click **OK**.
4. Please verify your connection status.



Congratulations! Installation is now complete.

România

1. Pregatiti-va de instalare

Verificati continutul pachetului

Va rugam sa va asigurati ca aveti totul in cutie:



Verificati echipamentul

Inaintea instalarii placii PC, ar trebui sa aveti urmatoarele:

1. Computer cu un CardBus 32-bit 3.3V liber (TEW-601PC)
2. Procesor 300 MHz si 32 MB de memorie (Recomandat)
3. Unitate CD-ROM
4. Controller CardBus corect instalat (doar TEW-601PC)
5. 802.11g/802.11b Access Point (pentru modul Infrastructure) sau alt adaptor wireless 802.11g/802.11b (pentru modul Ad-Hoc/Peer-to-Peer).

Important! NU instalati placa PC in computer pana cand nu vi se da instructiunea de a face acest lucru. Va rugam sa urmati instructiunile din Sectiunea 2 inaintea instalarii adaptorului in computerul dumneavoastra.

2. Instalarea programului Wireless Configuration Utility

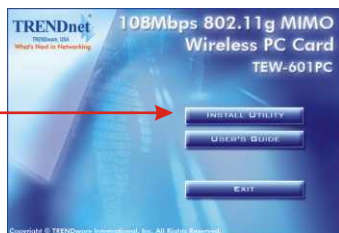
Windows 2000/XP

1. Introduceți CD-ul TEW-601PC în unitatea CD-ROM din computer; meniul de instalare va apărea automat. Dacă fereastra nu apare automat, click pe **Start**, click pe **Run** și scrieți **E:\Autorun.exe** în câmpul de text. Click pe **OK** pentru a porni instalarea.

Nota: Înlocuiți "E" din "E:\Autorun.exe" cu litera care desemnează unitatea dumneavoastră de CD-ROM.

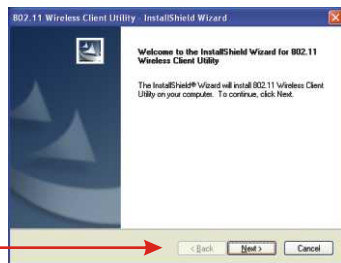
2. La meniul de instalare, click pe **Install Utility**.

INSTALL UTILITY

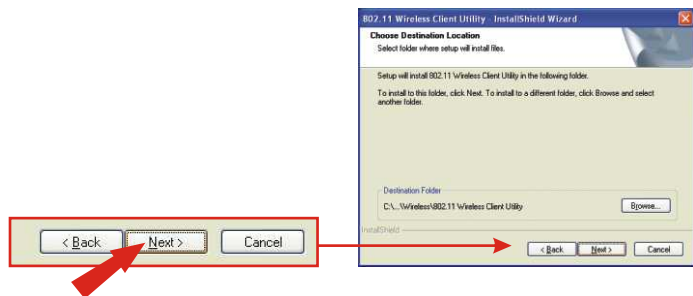


3. Click pe **Next**.

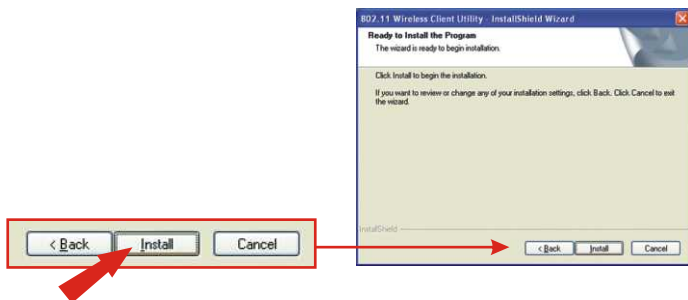
< Back **Next >** **Cancel**



4. Click pe **Next**.



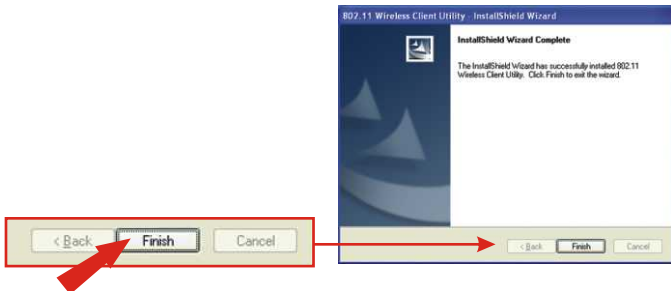
5. Click pe **Install**.



6. Un mesaj de avertizare va va spune ca dispozitivul pe care il instalati nu a fost inca certificat pentru compatibilitate cu Windows XP. Click pe **Continue Anyway**. Pentru Windows 2000, click pe **Yes**.



7. Click pe **Finish**.



3. Instalare fizica

Daca instalati placa PC 601PC Wireless:

Continuati doar daca ati completat deja pasii din Sectiunea 2

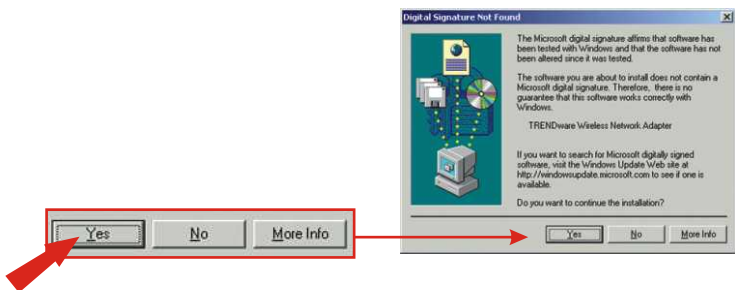
1. Inchideti computerul.
2. Introduceti placa PC ferm in slotul de placa PC deschis al laptopului dumneavoastra. Doar capatul de plastic ar trebui sa ramana in afara slotului.
3. Reporniti computerul.



4. Instalare drivere

Windows 2000

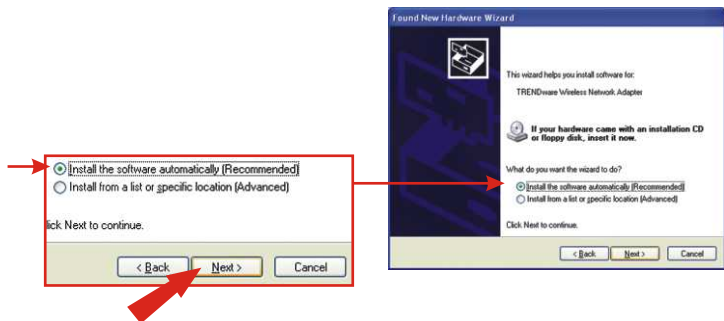
1. După repornirea computerului, un mesaj va spune că driver-ul care sunteți pe cale de a îl instala "does not contain a digital signature" (nu conține o semnătură digitală) și va întreba dacă vreți să continuați instalarea. Click pe **Yes**.



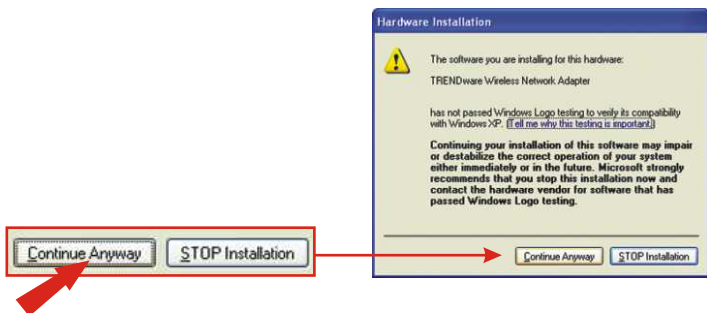
2. Continuați la Secțiunea 5 a acestui Ghid rapid de instalare pentru a continua configurarea plăcii wireless.

Windows XP

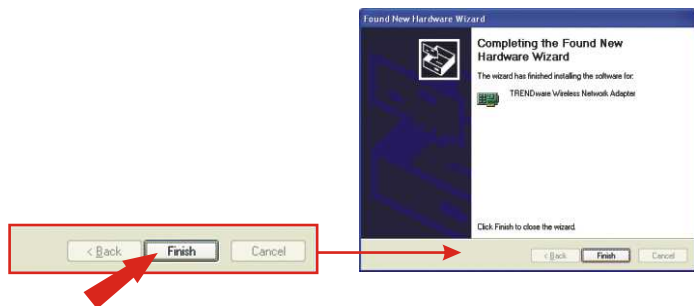
1. După repornirea computerului, "Found New Hardware Wizard" va apărea. Selectați **Install the software automatically** și dați click pe **Next**.



2. Un mesaj de avertizare va va spune ca dispozitivul pe care il instalati nu a fost inca certificat pentru compatibilitate cu Windows XP. Click pe **Continue Anyway**.



3. Click pe **Finish**.



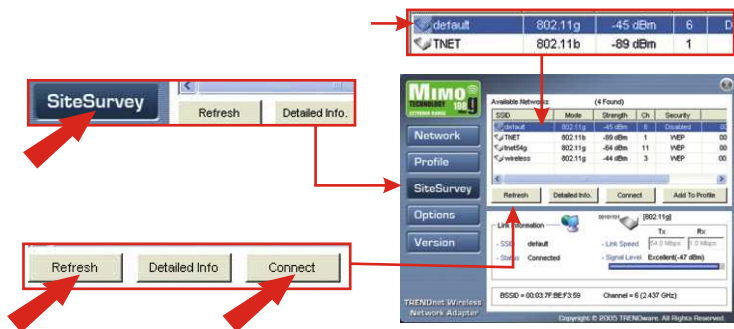
4. Continuati la Sectiunea 5 a acestui Ghid rapid de instalare pentru a continua configurarea placii wireless.

5. Configurarea Wireless

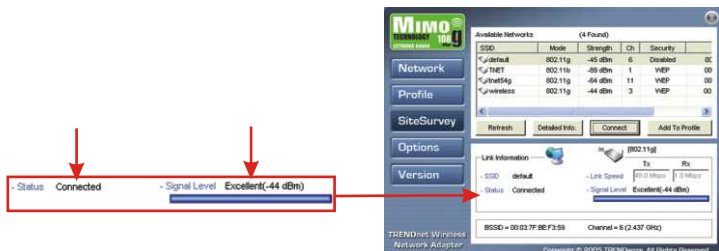
1. Dublu-click pe iconita wireless din system tray (langa ceas in coltul dreapta jos al ecranului).



2. Click pe **Site Survey**, click pe **Refresh** si selectati access point-ul dorit. Click pe **Connect**.



3. Click pe **OK**.
4. Va rugam sa verificati starea conexiunii.



Felicitari! Instalarea este acum completa.

Troubleshooting

Q1: I completed all the steps in the quick installation guide, but my card isn't connecting to my access point. What should I do?

A1: You should first verify that the Network card's SSID matches your wireless router or access point's SSID. If they already match, you should check your TCP/IP properties to ensure that **Obtain an IP address automatically** is selected. Refer to your Windows User's Manual if you are unable to locate your TCP/IP properties.

Q2: Windows is unable to recognize my hardware. What should I do?

A2: Make sure your computer meets the minimum requirements as specified in Section 1 of this quick installation guide. Also, you must install the wireless configuration utility (as described in Section 2) BEFORE you physically install your network card. Lastly, you may consider moving the card to a different PC Card Slot.

Q3: I cannot open the wireless configuration utility. What should I do?

A3: Go to your device manager (control panel > system) to make sure the adapter is installed properly. If you see a networking device with a yellow question mark or exclamation point, you will need to reinstall the device and/or the drivers.

If you still encounter problems, please refer to the User's Guide CD-ROM or contact technical support.

Certifications

This equipment has been tested and found to comply with FCC and CE Rules.

Operation is subject to the following two conditions:

- (1) This device may not cause harmful interference.
- (2) This device must accept any interference received.
Including interference that may cause undesired operation.



Waste electrical and electronic products must not be disposed of with household waste. Please recycle where facilities exist. Check with your Local Authority or Retailer for recycling advice.



NOTE: THE MANUFACTURER IS NOT RESPONSIBLE FOR ANY RADIO OR TV INTERFERENCE CAUSED BY UNAUTHORIZED MODIFICATIONS TO THIS EQUIPMENT. SUCH MODIFICATIONS COULD VOID THE USER'S AUTHORITY TO OPERATE THE EQUIPMENT.



TRENDnet

Product Warranty Registration

Please take a moment to register your product online.
Go to TRENDnet's website at <http://www.TRENDNET.com>

TRENDnet Technical Support

US/Canada Support Center	European Support Center
Contact Telephone: 1(888) 777-1550 Fax: 1(310) 626-6267 Email: support@trendnet.com	Contact Telephone Deutsch : +49 (0) 6331 / 268-460 Français : +49 (0) 6331 / 268-461 0800-907-161 (numéro vert) Español : +49 (0) 6331 / 268-462 English : +49 (0) 6331 / 268-463 Italiano : +49 (0) 6331 / 268-464 Dutch : +49 (0) 6331 / 268-465 Eesti : +372-6593613 (9.00AM to 5:00PM) Fax: +49 (0) 6331 / 268-466
Tech Support Hours 7:30am - 6:00pm Pacific Standard Time Monday - Friday	Tech Support Hours 8:00am - 6:00pm Middle European Time Monday - Friday

TRENDnet
3135 Kashiwa Street. Torrance, CA 90505
<http://www.TRENDNET.com>