

# TEW-510APB

Lühike paigaldusjuhend

Version 10.12.05



# Sisukord

Eesti .....	1
1. Paigalduseks valmistumine .....	1
2. Riistvara paigaldamine .....	2
3. TCP/IP parameetrite seadistamine .....	3
4. Accesspindi seadistamine .....	5
Troubleshooting.....	8

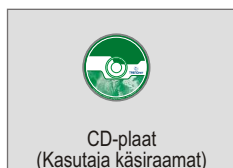
## 1. Paigalduseks valmistumine

Täname sind TRENDnet TEW-510APB Super A+G accesspointi ostmise eest.

See juhend aitab sul seadistada accesspointi kiiresti ja lihtsalt. Järgi ainult juhiseid ja naudi juhtmevaba interneti eeliseid. Kui sul tekib probleeme, loe "Probleemide lahendamise" peatükki. Kui vajad täiendavat tehnilist tuge, külasta veebisaiti [www.trendnet.com](http://www.trendnet.com) või võta ühendust tehnilise toega telefoni teel.

### Pakendi sisu

Palun veendu, et karbis on kõik osad:



### Kontrolli seadmeid

Enne accesspointi paigaldamist peaks sul olema:

1. Arvuti kaablipõhise (RJ-45) või WiFi võrgukaardiga
2. Arvutisse paigaldatud TCP/IP protokoll
3. Veebibrauser nagu Internet Explorer (5.0 või uuem) või Netscape Navigator (4.7 või uuem)
4. Hub või switch, millega on ühendatud olemasolev kaablivõrk
5. RJ-45 võrgukaabel accesspointi ühendamiseks switchiga

## 2. Riistvara paigaldamine

1. Leia accesspointile sobiv koht. Parim koht accesspointi jaoks on tavaliselt sinu traadita võrgu leviala keskel.
2. Ühenda RJ-45 võrgukaabel accesspointiga, seejärel ühenda võrgukaabli teine ots switchi või hubiga. Accesspoint on nüüd ühendatud sinu 10/100 Mbps kohtvõrguga.
3. Ühenda toiteadapter accesspointiga. Kasuta accesspointiga komplektis olevat adapterit. Teiste adapterite kasutamine võib seadet kahjustada.



**Märkus:** kui sa kasutad accesspointi seadistamiseks kaabliühendusega arvutit, ühenda see arvuti sama switchi või hubi külge, kuhu on ühendatud TEW-510APB.



### Kontrolli riistvara paigaldust

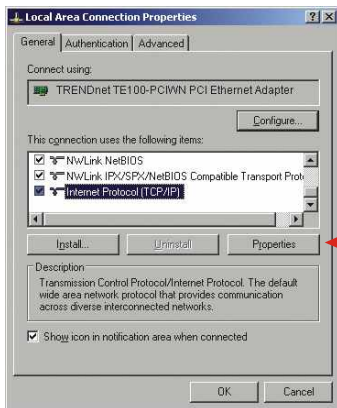
Veendu, et põlevad järgmised esipaneeli tuled: Power, LAN, WLAN.

# 3. TCP/IP parameetrite seadistamine

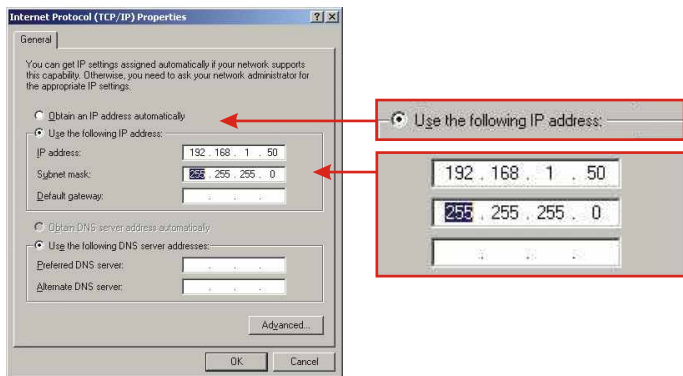
Enne, kui accesspointile juurde pääseb ja seda seadistada saab, tuleb muuta arvuti TCP/IP parameetreid (sealhulgas WiFi kaardi IP-aadress).

## Windows 2000/XP

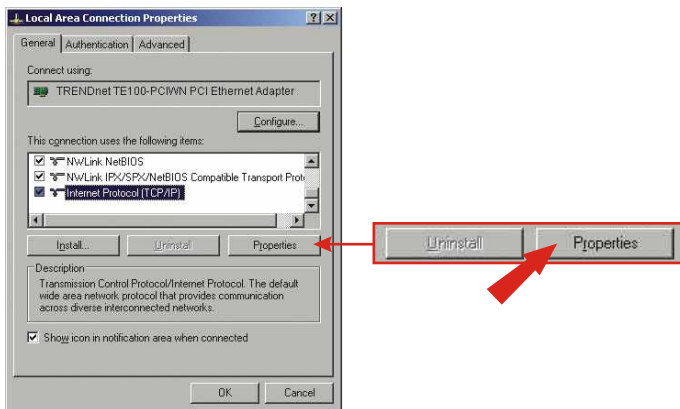
1. Leia töölaualt **Start** nupp.
2. Kliki **Start** ja kliki **Control Panel**. Windows 2000 puhul kliki **Start**, märgi **Settings** ja kliki **Control Panel**.
3. Topeltkliki **Network Connection** ikooni.
4. Paremkliki **Local Area Connection** ikooni ja seejärel kliki **Properties**. Avaneb **Local Area Connection Properties** aken.



5. Leia ja kliki **General** sakil **Internet Protocol TCP/IP**, seejärel kliki **Properties**. Avaneb **Internet Protocol (TCP/IP) Properties** aken.



6. Vali **Use the following IP address**. Sisesta IP-adressiks 192.168.1.50, subnetiks 255.255.255.0 ja kliki **OK**.



7. Kliki **OK**.
8. Sinu arvuti on nüüd accesspindiga ühenduse loomiseks ja selle seadistamiseks seadistamiseks valmis.

# 4. Accesspointi seadistamine

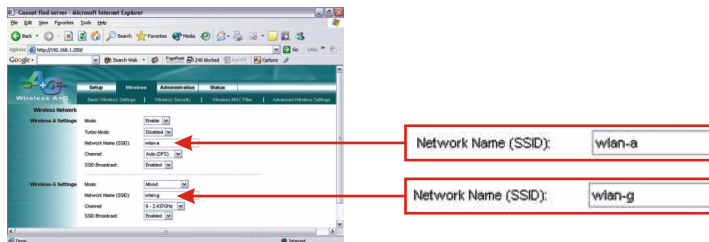
Kui sa seadistad TEW-510APB accesspointi kaabliühendusega arvutist, järgi punkte 1-3. Kui sa seadistad accesspointi WiFi ühendusega arvutist, järgi punkte 4-7.

## Kaabliühendusega arvutist

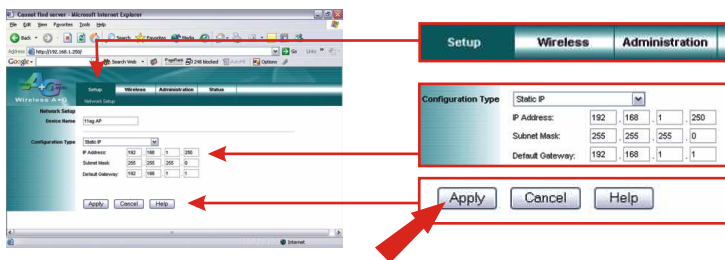
1. Ava veebibrauser (Internet Explorer või Netscape) ja sisesta aadressiväljale <http://192.168.1.250>, seejärel vajuta **Enter** klahvi. Jäta **username** väli tühjaks ja sisesta parooliks **admin**.



2. Kliki **Wireless**. Sisesta accesspointile vabalt valitud AP nimi (**AP Name**). Loo SSID, mida WiFi võrk kasutama hakkab (näiteks "WiFi AP", "Kodu AP" või "Kontori AP") ja vali kanal. Keri lehekülje lõppu ja kliki **Apply**.



3. Kliki **Setup**. Kui sinu praegune võrk ei ole samast segmendist (st 192.168.0.1-254), sisesta palun IP-address, subnet mask ja gateway (st ruuteri IP-address). Kliki **Apply**. Kui TEW-510APB praegused seadistused sind rahuldavad, jätkka järgmisest punktist.



## WiFi ühendusega arvutist

(Näites kasutatakse TRENDneti TEW-510PC WiFi adapterit)

Accesspointi tehaseseadistused on:

SSID wlan-a

Kanal - 6

4. va WiFi adapteriga arvutis WiFi seadistusprogramm.

5. Kliki **AP List**, vali **wlan-a** ja kliki **Connect**.





6. Kliki **Link Information** ja veendu, et arvuti saab ühenduse TEW-510APB ruuteriga.



7. Mine peatüki 4 (Accesspointi seadistamine) algusse ja järgi samme 1-3.

# Troubleshooting

**Q1: I specified the IP address http://192.168.1.100 in my internet browser's address bar, but error message says "The page cannot be displayed". How can I get into the TEW-510APB's web configuration page?**

**A1:** Please check your hardware and TCP/IP settings again by following the instructions sections 1~3, make sure the Power, WAN, WLAN on the Access Point's front panel are on and the TCP/IP configurations are correct. Then try accessing http://192.168.1.100 again.

**Q2: If my network's IP is different than the Access Point's range, what should I do?**

**A2:** You should still configure the access point first. After all the settings are applied, go to the Access Point's configuration page, click on TCP/IP settings and change an IP address for the Access Point to match your network's IP.

**Q3. After I successfully configured the Access Point to meet my network settings, I cannot connecting to my network using wireless computers.**

**A3:** If you have a DHCP server in your network, you need to go into TCP/IP settings again and re-select "Obtain an IP automatically" for Windows 98/ME and "Obtain an IP Address automatically" for Windows 2000/XP to allow the PC to regain an IP address from your DHCP server.

**Q4. All the settings are set correct, but I still can't use the Access Point, what should I do?**

**A4:** You can find additional information in the User's Guide. If you still have Problems, contact our Technical Support by email or phone.

## Certifications

This equipment has been tested and found to comply with FCC and CE Rules. Operation is subject to the following two conditions:

- (1) This device may not cause harmful interference.
- (2) This device must accept any interference received.  
Including interference that may cause undesired operation.



**NOTE:** THE MANUFACTURER IS NOT RESPONSIBLE FOR ANY RADIO OR TV INTERFERENCE CAUSED BY UNAUTHORIZED MODIFICATIONS TO THIS EQUIPMENT. SUCH MODIFICATIONS COULD VOID THE USER'S AUTHORITY TO OPERATE THE EQUIPMENT.

### **Federal Communication Commission Interference Statement**

This equipment has been tested and found to comply with the limits for a Class B digital device, pursuant to Part 15 of the FCC Rules. These limits are designed to provide reasonable protection against harmful interference in a residential installation. This equipment generates, uses and can radiate radio frequency energy and, if not installed and used in accordance with the instructions, may cause harmful interference to radio communications. However, there is no guarantee that interference will not occur in a particular installation. If this equipment does cause harmful interference to radio or television reception, which can be determined by turning the equipment off and on, the user is encouraged to try to correct the interference by one of the following measures:

- Reorient or relocate the receiving antenna.
- Increase the separation between the equipment and receiver.
- Connect the equipment into an outlet on a circuit different from that to which the receiver is connected.
- Consult the dealer or an experienced radio/TV technician for help.

This device complies with Part 15 of the FCC Rules. Operation is subject to the following two conditions: (1) This device may not cause harmful interference, and (2) this device must accept any interference received, including interference that may cause undesired operation.

FCC Caution: Any changes or modifications not expressly approved by the party responsible for compliance could void the user's authority to operate this equipment.

### **IMPORTANT NOTE:**

FCC Radiation Exposure Statement:

This equipment complies with FCC radiation exposure limits set forth for an uncontrolled environment. This equipment should be installed and operated with minimum distance 20cm between the radiator & your body.

If this device is going to be operated in 5.15 ~ 5.25GHz frequency range, then it is restricted in indoor environment only.

This transmitter must not be co-located or operating in conjunction with any other antenna or transmitter.

TRENDware declares that TEW-510APB ( FCC ID: RYK-WL7800A ) is limited in CH1~CH11 for 2.4 GHz by specified firmware controlled in U.S.A.



# TRENDnet

## Product Warranty Registration

Please take a moment to register your product online.  
Go to TRENDnet's website at <http://www.TRENDNET.com>

## TRENDnet Technical Support

### US/Canada Support Center

**Contact**

**Telephone:** 1(888) 777-1550

**Fax:** 1(310) 626-6267

**Email:** [support@trendnet.com](mailto:support@trendnet.com)

**Tech Support Hours**

7:30am - 6:00pm Pacific Standard Time  
Monday - Friday

### European Support Center

**Contact****Telephone**

Deutsch : +49 (0) 6331 / 268-460

Français : +49 (0) 6331 / 268-461

0800-907-161 (numéro vert)

Español : +49 (0) 6331 / 268-462

English : +49 (0) 6331 / 268-463

Italiano : +49 (0) 6331 / 268-464

Dutch : +49 (0) 6331 / 268-465

Eesti : +372-6593613 (9.00AM to 5:00PM)

**Fax:** +49 (0) 6331 / 268-466

**Tech Support Hours**

8:00am - 6:00pm Middle European Time  
Monday - Friday

**TRENDnet**

3135 Kashiwa Street. Torrance, CA 90505

**<http://www.TRENDNET.com>**