



## Quick Installation Guide



**TEW-452BRP**

# Table of Contents

English .....	1
1. Before You Start .....	1
2. Install Router .....	2
3. Adding/replacing the router .....	6
Troubleshooting .....	8

# 1. Before You Start



## Package Contents

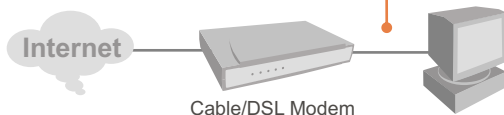
- TEW-452BRP
- Easy Go CD-ROM
- Quick Installation Guide
- RJ-45 Cable
- AC Power Adapter (7.5V, 1A)

## System Requirements

- Web Browser: Internet Explorer (5.0 or above)
- Computer with Network adapter installed
- Broadband Internet
- Installed Cable or DSL modem

**Important!** DO NOT connect the router until instructed to do so. Follow the steps below before you insert the Easy Go CD-ROM into your computer's CD-ROM Drive.

1. Verify that you have a direct connection from your Cable or DSL modem to your computer. Also verify that you are connected to the Internet by browsing to a website, such as <http://www.trendnet.com>.



## 2. Install Router

1. Insert the **Easy Go CD-ROM** in your computer's CD-ROM Drive and then click **Install Router**.



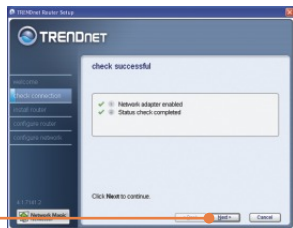
2. Click **Start Installation**.



3. Choose the desired language from the dropdown list and then click **Next**.



4. Click **Next**.



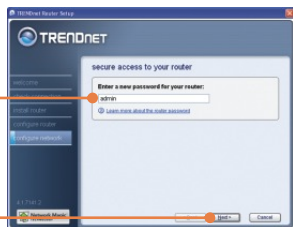
5. If this screen appears, go to **Section 3**. If not, please continue to step 6.



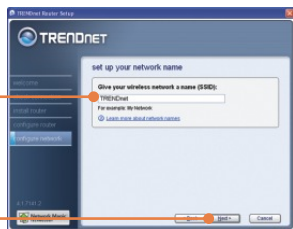
6. Follow the Wizard instructions and continue through the remaining installation steps. Click **Next**.



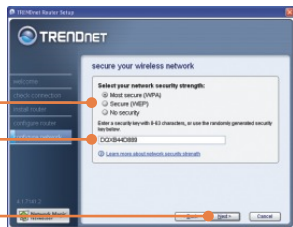
7. Enter a new password for the router and then click **Next**. By default, the password is **admin**.



8. When the **wireless network** screen appears, enter a unique network name and then click **Next**. By default, the SSID is **TRENDnet**.



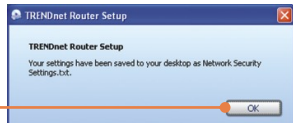
9. Select an Encryption type, enter a security key for your wireless network and then click **Next**.



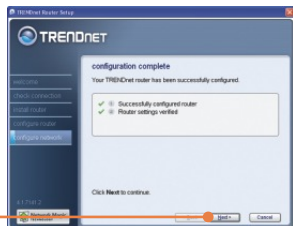
10. Please write the settings above in the space provided on the setup CD sleeve. Then click **Next**.



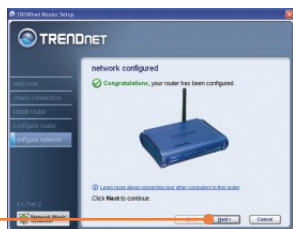
11. Click **OK**.



12. Click **Next**.



13. Click **Next**.



14. Click **Finish**.



**Your installation is now complete.**

For detailed information regarding the TEW-452BRP configuration and advanced settings, please refer to the User's Guide included on the Easy Go Installation CD-ROM or TRENDnet's website at [www.trendnet.com](http://www.trendnet.com).

### 3. Adding/Replacing the router

Note: When this window appears, it means you have a DSL/Cable modem router. If you are replacing the current router with the wireless TEW-452BRP, please select **Yes** and click **Next** to continue. If you are adding the wireless router behind the current connection, please select **No** and click **Next** to continue.

#### To replace current router

1. To replace current router, select **Yes** and then click **Next**.



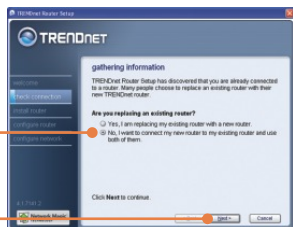
2. Follow the Wizard instructions and continue through the remaining installation steps. Click **Next**. When **secure access to your router** window appears, please go to **section 2 step 7** to continue.





## To add the router

1. To add the wireless router behind your current network, select **No** and then click **Next**.



2. Follow the Wizard instructions and continue through the remaining installation steps. Click **Next**. When **secure access to your router** window appears, please go to **section 2 step 7** to continue.



**Your installation is now complete.**

For detailed information regarding the TEW-452BRP configuration and advanced settings, please refer to the User's Guide included on the Easy Go Installation CD-ROM or TRENDnet's website at [www.trendnet.com](http://www.trendnet.com).

### **Register Your Product**

To ensure the highest level of customer service and support, please take a moment to register your product Online at: **[www.TRENDnet.com/register](http://www.TRENDnet.com/register)**

Thank you for choosing TRENDnet

**Q1: I inserted the Easy Go CD-ROM into my computer's CD-ROM drive and the installation menu does not appear automatically. What should I do?**

**A1:** If the installation menu does not appear automatically, click **Start**, click **Run**, and type **D:\Autorun.exe** where "D" in "D:\Autorun.exe" is the letter assigned to your computer's CD-ROM Drive. Then click **OK** to start the installation. If your computer is not a Windows-based PC (e.g. Mac, Linux), then you need to manually configure your Internet connection settings. See Question 4.

**Q2: How can I get into the TEW-452BRP web configuration page?**

**A2:** After you install the TEW-452BRP Wireless Router, you can access the web configuration page by opening your web browser and entering <http://192.168.10.1> into the web browser's address bar, where <http://192.168.10.1> is the default IP address of the TEW-452BRP Wireless Router. The default user name and password is admin.

**Q3: I am not sure what type of Internet Account Type I have for my Cable/DSL connection. How do I find out?**

**A3:** Contact your Internet Service Provider's (ISP) Customer Service for the correct information.

**Q4: I received an error while running Easy God Setup. What should I do?**

**A4:** Make sure that your computer's CD-ROM is in working condition. Also verify that all cable connections are secure and that you are able to connect to the Internet, and then retry installing the router. During setup, the Easy Go Setup wizard will check the operation of your network adapter and Internet connection. If the 111 error message appears, you may need to change the IP address of the router.

- 1) Open up Internet explorer, type into the address bar <http://192.168.10.1> and hit enter.
- 2) Click on **Basic -> Network Settings**.
- 3) Under **Router Settings**, change the Router IP address to 192.168.11.1.
- 4) Under **DHCP Server Settings**, change the DHCP IP Address Range to 192.168.11.101 to 192.168.11.200.
- 5) Click **Save Settings**.

**Q5: All the settings are correct, but I can not make a wireless connection to the Router. What should I do?**

**A5:** First, double check that the WLAN light on the Router is lit. Second, power cycle the TEW-452BRP. Unplug the power to the TEW-452BRP. Wait 15 seconds, then plug the power back in to the TEW-452BRP. Third, contact the manufacturer of your wireless network adapter and make sure the wireless network adapter is configured with the proper SSID and Encryption (if enabled).

**Q6: After I finish installing the router, then Network Magic Installation Wizard appears. What should I do?**

**A6:** Network Magic is an optional bonus program. It works with your router to setup, manage, repair and protect your home network. If you do not want to install Network Magic, select Exit TRENDnet Router Setup and then click Finish.

If you still encounter problems or have any questions regarding the TEW-452BRP, please refer to the User's Guide included on the Easy Go Setup CD-ROM or contact Trendnet's Technical Support Department.

## Certifications

This equipment has been tested and found to comply with FCC and CE Rules.

Operation is subject to the following two conditions:

- (1) This device may not cause harmful interference.
- (2) This device must accept any interference received. Including interference that may cause undesired operation.



Waste electrical and electronic products must not be disposed of with household waste. Please recycle where facilities exist. Check with you Local Authority or Retailer for recycling advice.



**NOTE:** THE MANUFACTURER IS NOT RESPONSIBLE FOR ANY RADIO OR TV INTERFERENCE CAUSED BY UNAUTHORIZED MODIFICATIONS TO THIS EQUIPMENT. SUCH MODIFICATIONS COULD VOID THE USER'S AUTHORITY TO OPERATE THE EQUIPMENT.

## ADVERTENCIA

En todos nuestros equipos se mencionan claramente las características del adaptador de alimentación necesario para su funcionamiento. El uso de un adaptador distinto al mencionado puede producir daños físicos y/o daños al equipo conectado. El adaptador de alimentación debe operar con voltaje y frecuencia de la energía eléctrica domiciliar existente en el país o zona de instalación.



## Customer Support

Visit [www.trendnet.com/support](http://www.trendnet.com/support)

### Email:

[support@trendnet.com](mailto:support@trendnet.com)



### Europe (Germany • France • Italy • Spain • Switzerland • UK)

**Toll Free Telephone:** +00800 60 76 76 67

English/Espanol - 24/7

Francais/Deutsch - 11 am-8pm, Monday - Friday MET

### Worldwide

**Telephone:** +(31) (0) 20 504 05 35

English/Espanol - 24/7

Francais/Deutsch - 11 am-8pm, Monday - Friday MET

## Product Warranty Registration

Please take a moment to register your product online.

Go to TRENDnet's website at <http://www.trendnet.com/register>

**TRENDnet®**

20675 Manhattan Place  
Torrance, CA 90501  
USA