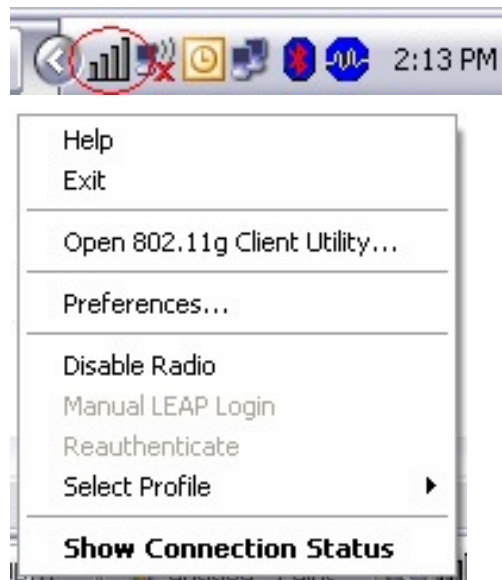


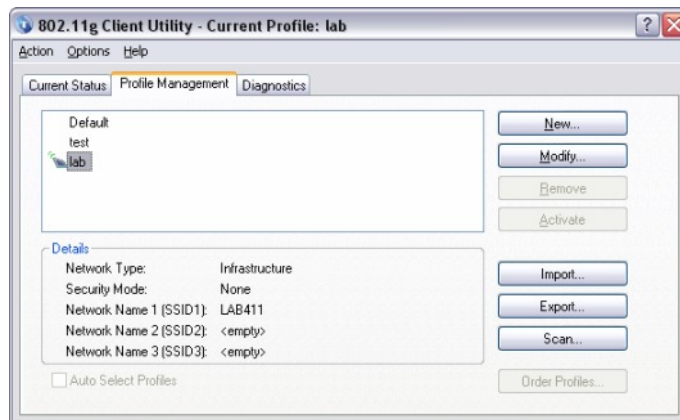
TEW-444UB F.A.Q.

Q: How do I connect to my wireless network?

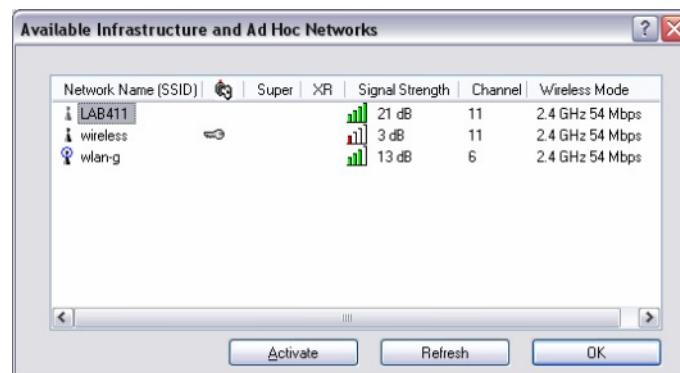
A: Step 1. Open the utility by right clicking on the icon at the bottom right hand side of the screen and going to Open 802.11g Client utility.



Step 2. Click on the “**Profile Management**” tab then click on “**Scan**”.

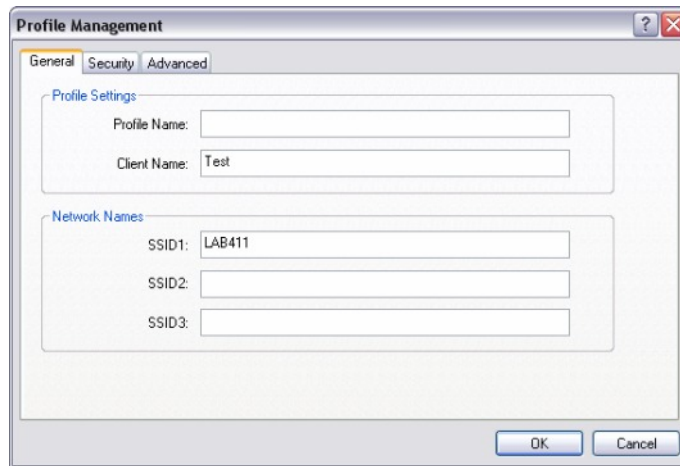


Step 3. Highlight the wireless network you want to connect to. Click “**Activate**” then click “**OK**”.

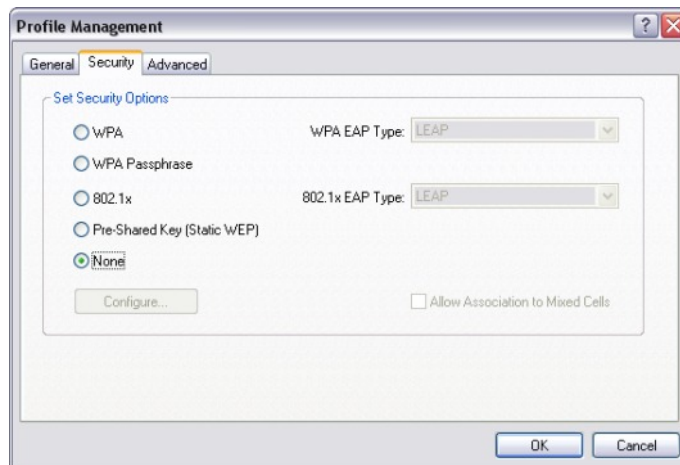


TEW-444UB F.A.Q.

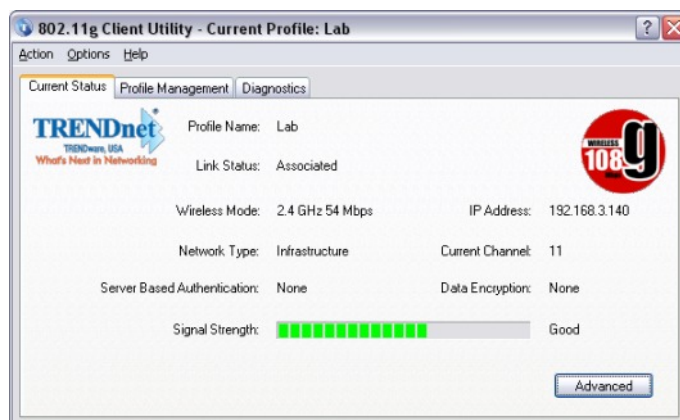
Step 4. It will ask you to name the profile and click “OK”.



Step 5. If you have encryption enabled. Go to the “Security” tab and enter your Security settings.



Step 6. If you did not have encryption enabled it will switch over to the “Current Status” tab. If the connection was successful you will receive status bars for Signal Strength.



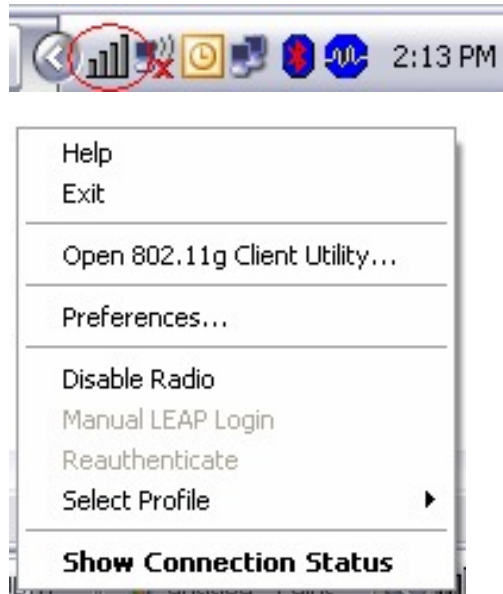
TEW-444UB F.A.Q.

Q: What is Ad-Hoc Mode?

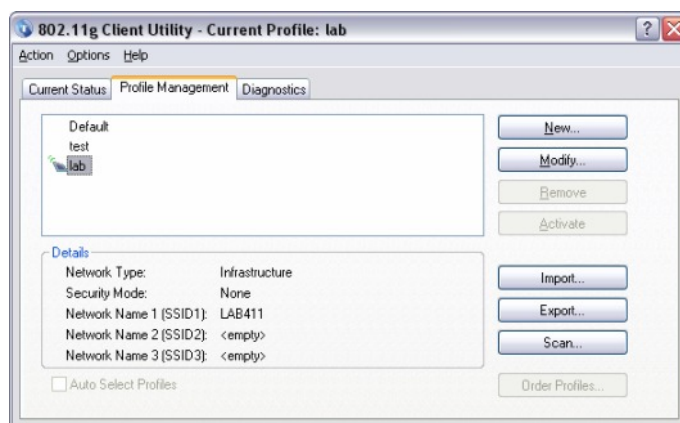
A: Peer-to-peer wireless connection between computers when no router or access point is used.

Q: How do I configure encryption on my wireless adapter?

A: Step 1. Open the utility by right clicking on the icon at the bottom right hand side of the screen and going to Open 802.11g Client utility.

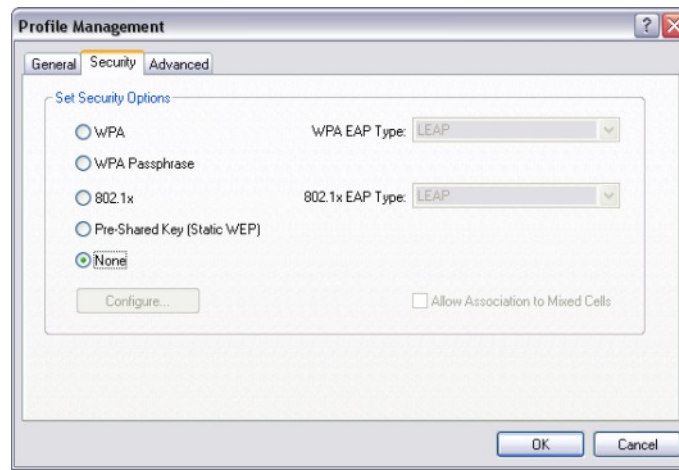


Step 2. Click on the “**Profile Management**” tab of the Wireless Configuration Utility, highlight the profile you want to modify and click “**Modify**”.



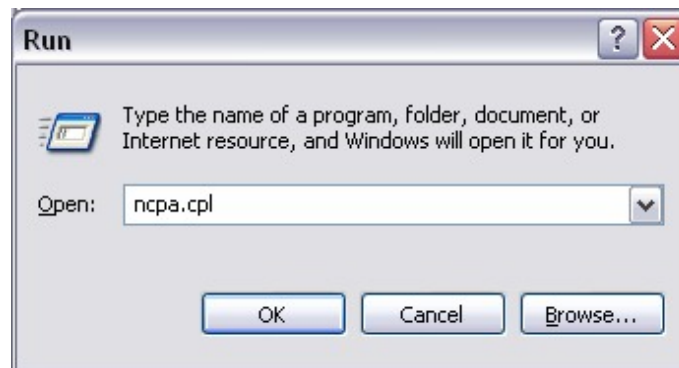
TEW-444UB F.A.Q.

Step 3. Then select what type of encryption you are using and click “OK”.

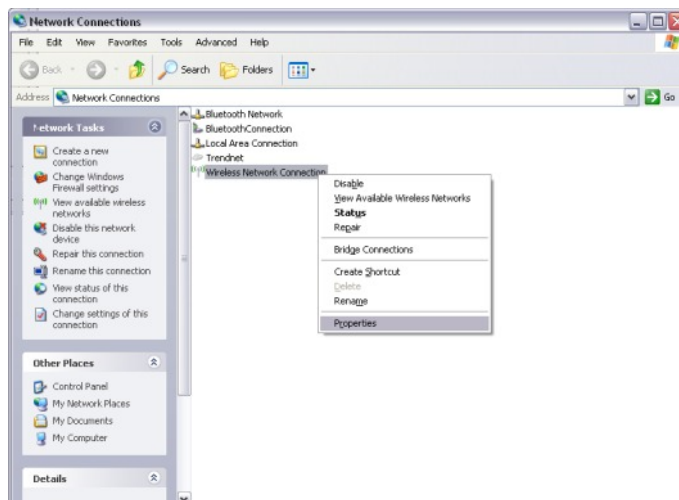


Q: Why does my utility only have three tabs?

A: Step 1. The Wireless Zero Configuration service is controlling the adapter. Click on **Start** then **Run**. Type in “**ncpa.cpl**”, without the quotes and hit enter.

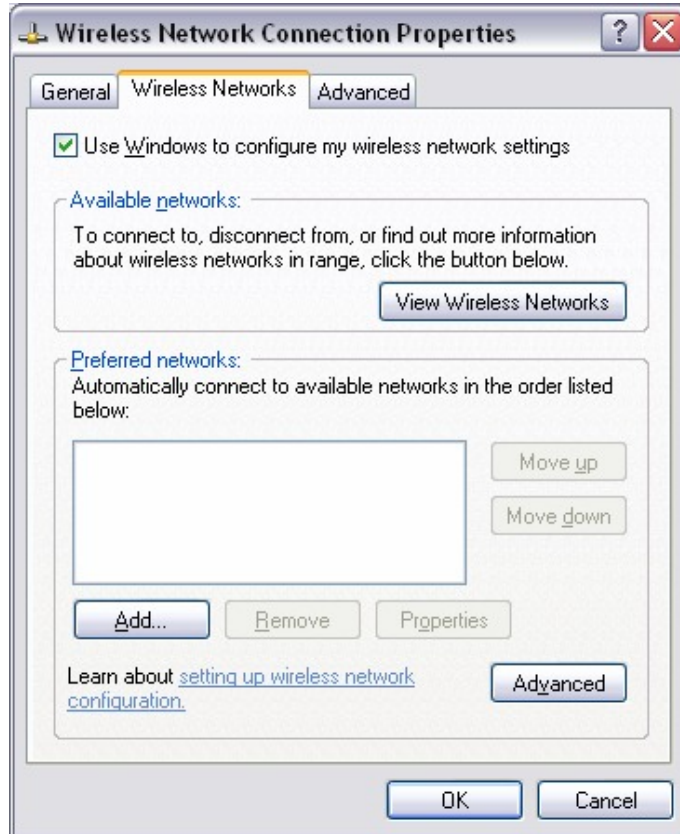


Step 2. This will open the Network Connections window. Right click on your wireless network connection and click on properties.



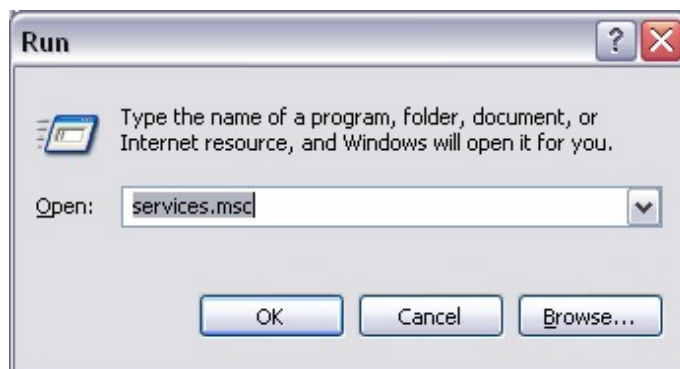
TEW-444UB F.A.Q.

- Step 3.** Click on the “**Wireless Networks**” tab and uncheck “**Use Windows to configure my wireless networks**” at the top. The Wireless Configuration Utility should now have all seven tabs.



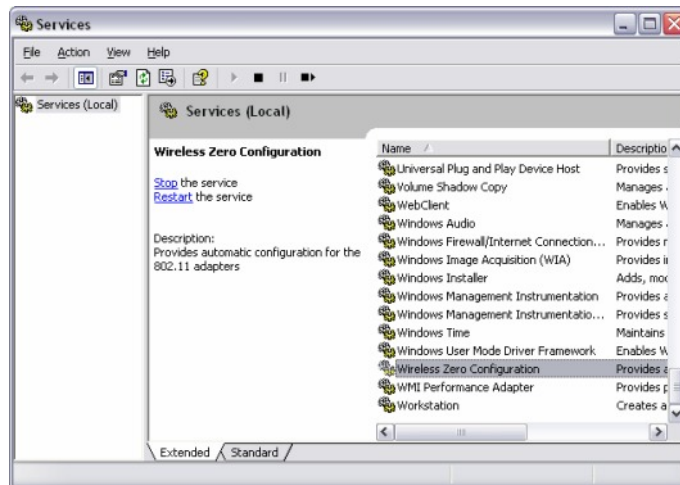
Q: Why is the Wireless Networks tab missing under the properties of my wireless network connection?

- A: Step 1.** The Wireless Zero Configuration service is not running. Click on **Start** then **Run**. Type in “**services.msc**”, without the quotes and hit enter.

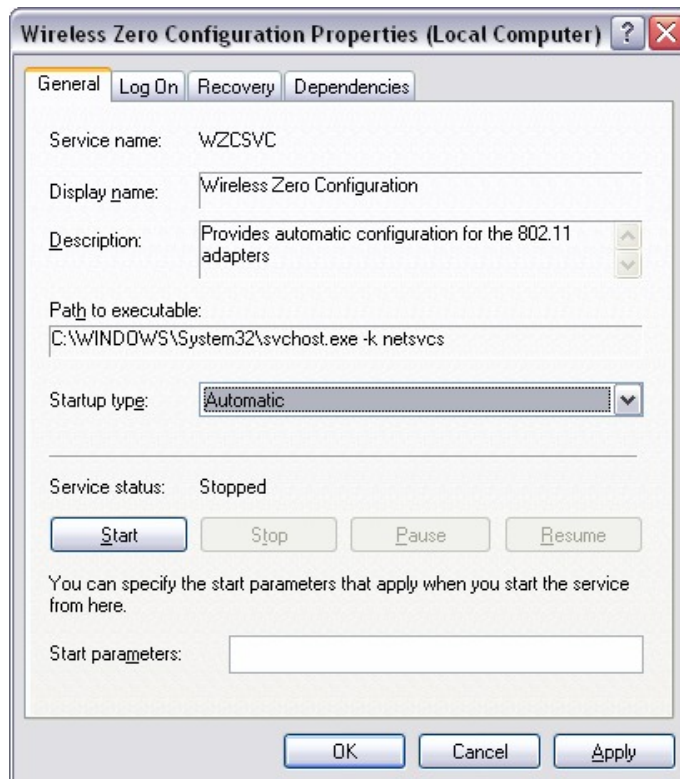


TEW-444UB F.A.Q.

Step 2. This will open the services window. Double click on the Wireless zero configuration service.



Step 3. Make sure the Startup type is set to Automatic and click on **“Start”** to start the service. Click **“Apply”** then **“OK”**.



TEW-444UB F.A.Q.

Q: Why am I getting low signal strength?

A: There are a number of factors that can impact the range of wireless devices.

- 1) Keep the number of obstructions to a minimum. Each obstruction can reduce the range of a wireless device. Position the wireless devices in a manner that will minimize the amount of obstructions between them.
- 2) Building materials can have a large impact on your wireless signal. In an indoor environment try to position the wireless devices so that the signal passes through drywall or open doorways or space.
- 3) Antenna position can also have a large impact on your wireless signal. Use the adapter's site survey tool to determine the best antenna position for your wireless devices.
- 4) Interference from devices that produce RF noise can also impact your signal. Position your wireless devices away from Microwaves, UPS's, monitors, HAM radios, etc. Also, anything operating on the 2.4ghz frequency will cause interference. Such as 2.4ghz cordless phones or other wireless remotes operating on the 2.4ghz frequency.

If you are experiencing low, or no, signal strength consider repositioning the wireless devices, repeating the signal or using stronger antenna's to boost the signal strength.