



# TRENDNET<sup>®</sup>



## Quick Installation Guide



# TEW-435BRM

# Table of Contents

English .....	1
1. Before You Start .....	1
2. Hardware Installation .....	2
3. Configure The Modem .....	3
4. Setting up Encryption .....	5
Troubleshooting .....	6

# 1. Before You Start



## Package Contents

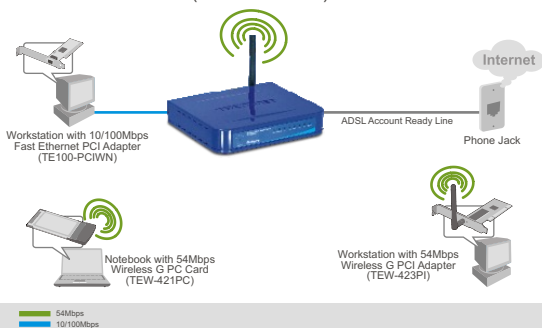
- TEW-435BRM
- User's Guide CD-ROM
- Quick Installation Guide
- 1 x 2dBi Detachable Antenna
- 1 x RJ-45 Ethernet Cable
- 1 x RJ-11 Telephone Cable
- Mounting Stand
- Power Adapter

## Installation Requirements

- A working DSL Internet Connection
- A computer with a wired or wireless network adapter properly installed.
- Web Browser: Internet Explorer (5.0 or higher)

## Application

### 54Mbps Wireless G ADSL Firewall Modem Router (TEW-435BRM)



## 2. Hardware Installation

1. Connect one end of the RJ-45 cable to one of the TEW-435BRM's LAN ports. Connect the other end of cable to the computer's Ethernet port. Then connect the 2dBi detachable antenna.

2. Connect one end of the RJ-11 cable to the TEW-435BRM's ADSL port. Connect the other end of the cable to the phone jack.

3. Connect the AC Power Adapter to the TEW-435BRM and then to a power outlet.

4. Verify that the following panel lights are on: **Power, LAN, and WLAN.**



# 3. Configure the Modem

**Note:** It is recommended that you configure the Modem from a wired computer.

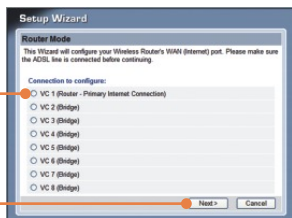
1. Open your web browser, type **http://192.168.0.1** in the Address bar, and press **Enter**.



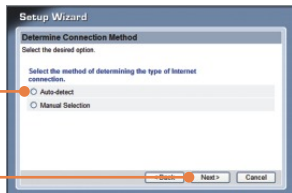
2. Click **Setup Wizard**.



3. Select **VC 1 (Router – Primary Internet Connection)** and then click **Next**.



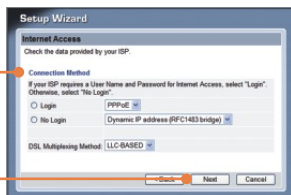
4. Select **Auto-detect** and then click **Next**.



## Note:

If the Setup Wizard could not automatically detect your Internet connection, select **Manual Selection** and input the information using the information provided by your ISP.

5. Configure the settings based on information provided by your ISP. Then click **Next**.



6. Configure the settings based on information provided by your ISP. Then click **Next**.



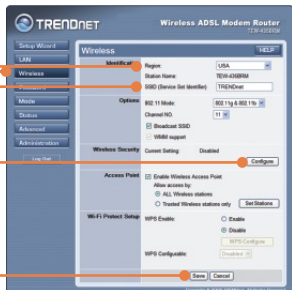
7. Check **Test Internet Connection**, and then click **Finish**.



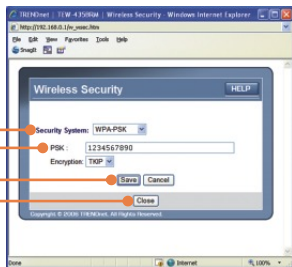
8. Verify that the **ADSL** and **Internet** LED is lit and then click **Close**.

## 4. Setting up Encryption

1. Click **Wireless**. Select the **Region**, enter a desired **SSID** and then click **Save**. Click **Configure** to set up **Wireless Security**.



2. Select a **Security System**, enter a security key for your wireless network, click **Save** and then click **Close**.



**Your installation is now complete.**

For detailed information regarding the TEW-435BRM's configuration and advanced settings, please refer to the Troubleshooting section, User's Guide CD-ROM, or TRENDnet's website at <http://www.trendnet.com>.

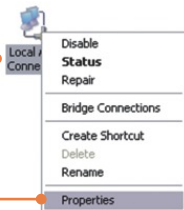
### Register Your Product

To ensure the highest level of customer service and support, please take a moment to register your product Online at: [www.trendnet.com/register](http://www.trendnet.com/register)  
Thank you for choosing TRENDnet

**Q1:** I typed `http://192.168.0.1` in my Internet Browser's Address Bar, but an error message says "The page cannot be displayed." How can I get into the TEW-435BRM's web configuration page?

**A1:** First, check your hardware settings again by following the instructions in Section 2. Second, make sure the LAN and WLAN lights are lit. Third, make sure your TCP/IP settings are set to **Obtain an IP address automatically** (see the steps below).

1. Go into the **Control Panel** and double-click the **Network Connections** icon, right-click the **Local Area Connection** icon and then click **Properties**.



2. Click **Internet Protocol (TCP/IP)** and then click **Properties**. Then click on **Obtain an IP address automatically**.



Fourth, press on the factory reset button for 15 seconds.

**Q2:** The Modem does not auto-detect my DSL connection. What should I do?

**A2:** First, verify that your DSL account is activated. Second, make sure all the cables are properly connected (see Section 2). Third, in Section 3, select manual selection in the Setup Wizard and configure the Modem based on information provided by your ISP.



**Q3: All the settings are correct, but I can not make a wireless connection to the Modem. What should I do?**

**A3:** First, double check that the WLAN light on the Modem is lit. Second, power cycle the Modem. Unplug the power to the Modem. Wait 15 seconds, then plug the power back in. Third, log into your Modem (see Section 3). Click on **Wireless** and make sure **Enable Access Point** is checked. Fourth, contact the manufacturer of your wireless network adapter. Make sure the wireless network adapter is configured with the proper SSID. The default SSID of the Access Point is **TRENDnet**.

If you still encounter problems or have any questions regarding the **TEW-435BRM**, please contact TRENDnet's Technical Support Department.

## Certifications

This equipment has been tested and found to comply with FCC and CE Rules. Operation is subject to the following two conditions:

- (1) This device may not cause harmful interference.
- (2) This device must accept any interference received.  
Including interference that may cause undesired operation.



Waste electrical and electronic products must not be disposed of with household waste. Please recycle where facilities exist. Check with your Local Authority or Retailer for recycling advice.



**NOTE:** THE MANUFACTURER IS NOT RESPONSIBLE FOR ANY RADIO OR TV INTERFERENCE CAUSED BY UNAUTHORIZED MODIFICATIONS TO THIS EQUIPMENT. SUCH MODIFICATIONS COULD VOID THE USER'S AUTHORITY TO OPERATE THE EQUIPMENT.



# TRENDnet<sup>®</sup>

## Customer Support

Visit [www.trendnet.com/support](http://www.trendnet.com/support)

Email:

[support@trendnet.com](mailto:support@trendnet.com)



**Europe** (Germany • France • Italy • Spain • Switzerland • UK)

**Toll Free Telephone:** +00800 60 76 76 67

English/Espanol - 24/7

Francais/Deutsch - 11am-8pm, Monday - Friday MET

**Worldwide**

**Telephone:** +(31) (0) 20 504 05 35

English/Espanol - 24/7

Francais/Deutsch - 11am-8pm, Monday - Friday MET

## Product Warranty Registration

Please take a moment to register your product online.

Go to TRENDnet's website at <http://www.trendnet.com/register>

# TRENDnet<sup>®</sup>

20675 Manhattan Place  
Torrance, CA 90501  
USA