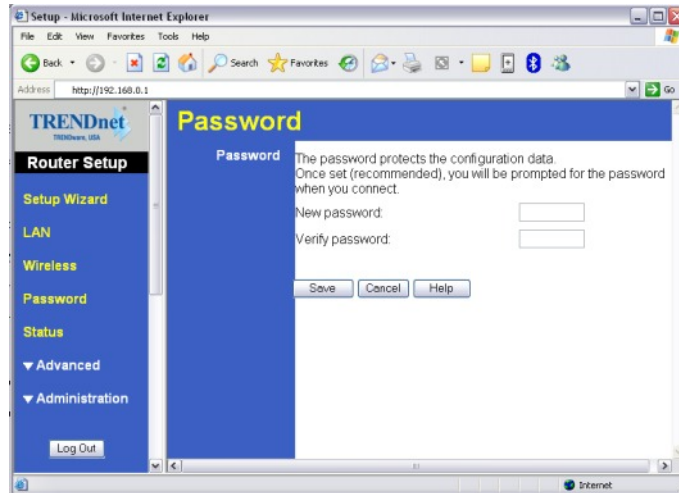


TEW-431BRP F.A.Q.

Q: How do I change the password on my router?

A: Log into the router by entering its IP address into a browser. The default IP address is <http://192.168.0.1>. Click on **“Password”** on the left hand side.



Q: What can I do if I forgot my password or want to reset back to factory defaults?

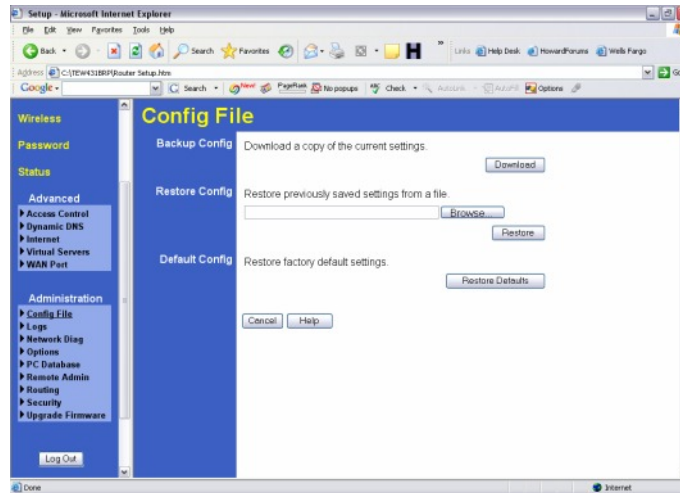
A: Press and hold in the reset button in the back of the router for approximately 15 seconds.



TEW-431BRP F.A.Q.

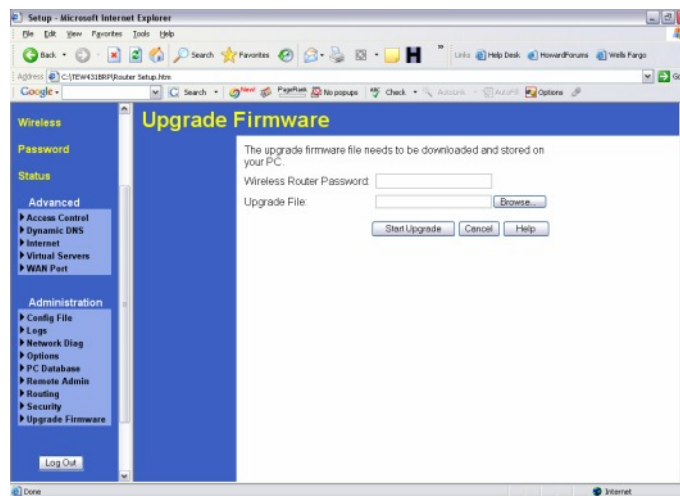
Q: How do I save or reload the configuration of my router?

A: Log into the router by entering its IP address into a browser. The default IP address is <http://192.168.0.1>. On the left hand side click on “**Administration>Config File**”.



Q: How do I upgrade the firmware on my router?

A: Log into the router, by entering its IP address into your browser. The default IP address is <http://192.168.0.1>. On the left hand side click on “**Administration> Upgrade Firmware**”.



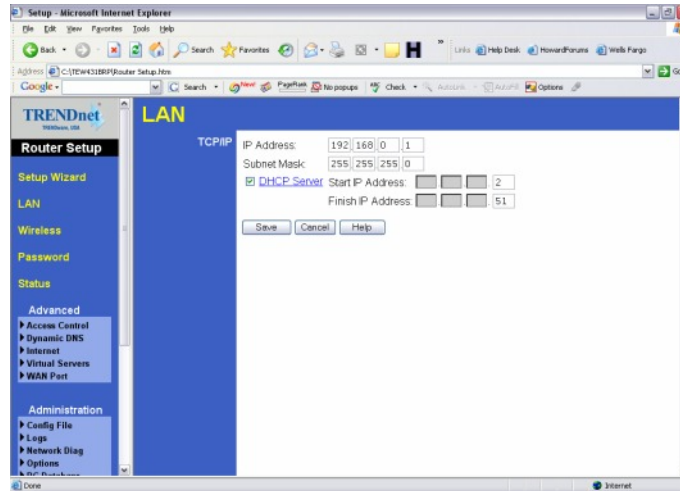
Q: What is the default IP address of my router?

A: The Default IP is 192.168.0.1 with no username or password.

TEW-431BRP F.A.Q.

Q: How do I change the IP address of my router?

A: Log into the router by entering its IP address into a browser. The default IP address is <http://192.168.0.1>. On the left hand side click on “**LAN**”.

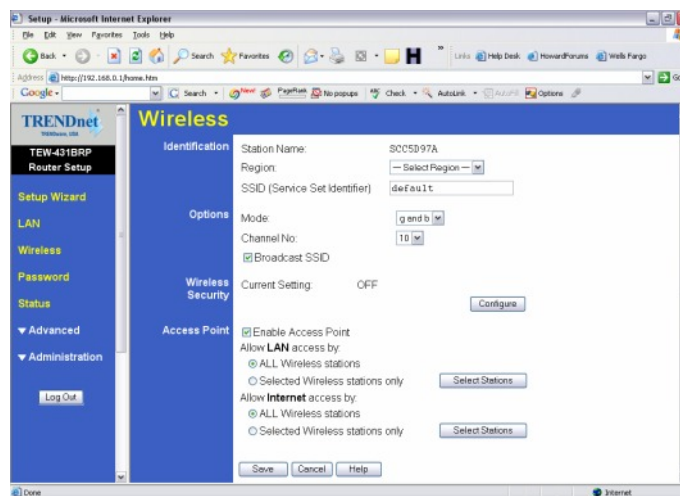


Q: How do I configure the router through the web-based configuration?

A: Log into the router by entering its IP address into a browser. The default IP address is <http://192.168.0.1>

Q: How do I enable encryption on my router?

A: Log into the router by entering its IP address into a browser. The default IP address is <http://192.168.0.1> Click on “**Wireless**”.



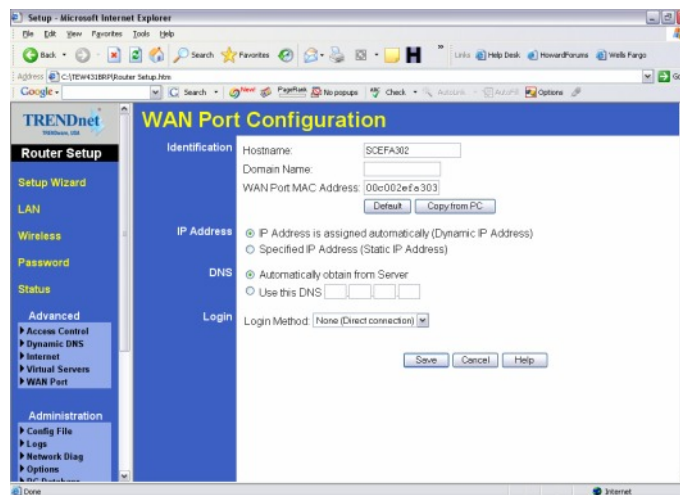
TEW-431BRP F.A.Q.

Click on configure settings, There you can select either WEP 64bit or 128bit, Also WPA-PSK.



Q: Where can I find the MAC address of my router?

A: Log into the router by entering its IP address into a browser. The default IP address is <http://192.168.0.1>. On the left hand side click on **“Advanced>Wan Port”**.

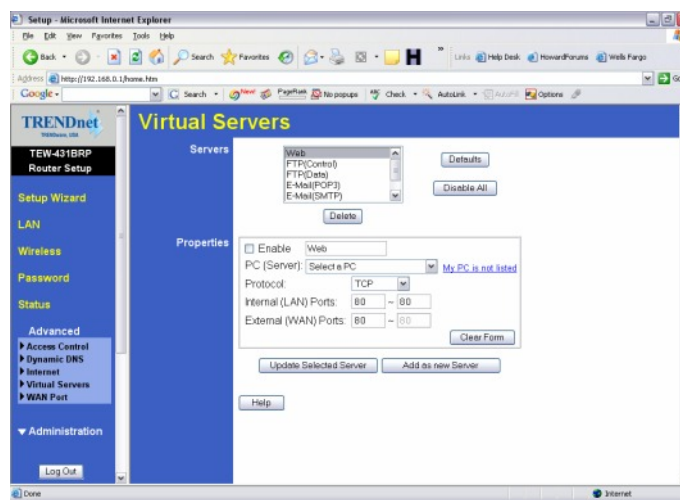


TEW-431BRP F.A.Q.

Q: How do I forward ports in my router?

A: Well Known Ports

- Step 1.** Log into the router by opening a web browser and entering http://192.168.0.1 in the address line.
- Step 2.** Click on “**Cancel**” if the Setup Wizard comes up.
- Step 3.** Click on “**Advanced**” on the left hand side.
- Step 4.** Click on “**Virtual Server**”.



- Step 5.** If it is a “well known” port click on the “**Service**” under the Servers section.
- Step 6.** Click “**Enable**” in the properties section.
- Step 7.** Choose the computer that you want the port forwarded to in the PC (Server) section.

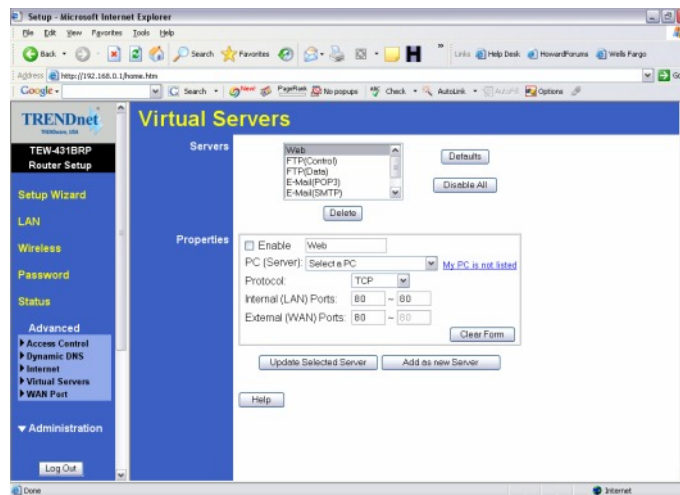
Note: If the computer is not listed here because it has been assigned a static IP address make sure you add it to the PC Database under **Administration>PC Database**.

- Step 8.** Click “**Add as a New Server**”.

TEW-431BRP F.A.Q.

Custom Ports

- Step 1.** Log into the router by opening a web browser and entering <http://192.168.0.1> in the address line
- Step 2.** Click on **“Cancel”** if the Setup Wizard comes up.
- Step 3.** Click on **“Advanced”** on the left hand side.
- Step 4.** Click on **“Virtual Servers”**.



- Step 5.** For Custom ports click **“Enable”** under the **“Properties”** section.
- Step 6.** Choose the computer that you want the port forwarded to in the PC (Server) section.

Note: If the computer is not listed here because it has been assigned a static IP address make sure you add it to the PC Database under **Administration>PC Database**.
- Step 7.** Choose the protocol(s).
- Step 8.** Enter in the port(s).
- Step 9.** Click **“Add as a New Server”**.

TEW-431BRP F.A.Q.

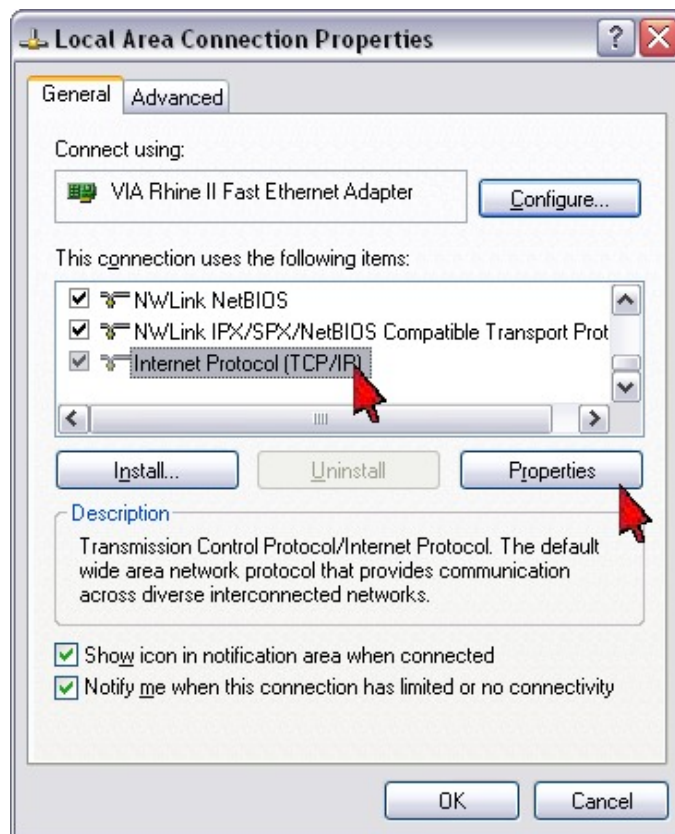
Q: How do I access the router if it has a solid red status light?

A: Step 1. Click **Start** then click on the **Control Panel**. For Windows 2000 click on **Start**, highlight **settings** then click on the **Control Panel**.

Step 2. Double-Click on the **Network Connection** icon.

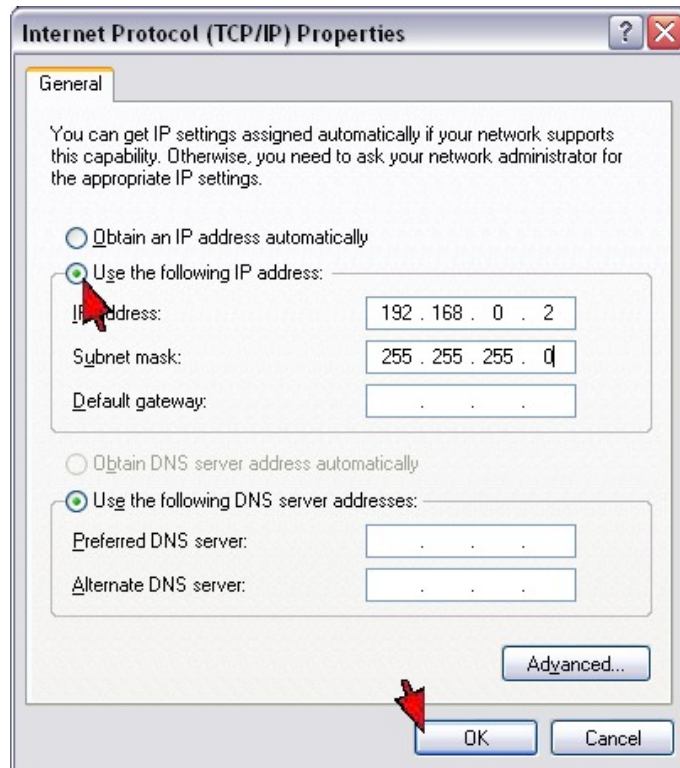
Step 3. Right-Click on the **Local Area Connection** icon then click on **Properties**.

Step 4. Highlight the **Internet Protocol (TCP/IP)** by single clicking on it then click on **Properties**.



TEW-431BRP F.A.Q.

Step 5. Select **Use the following IP Address**. Enter 192.168.0.2 for the IP Address and 255.255.255.0 for the Subnet mask. Click **OK**.



Step 6. Click **OK** again.

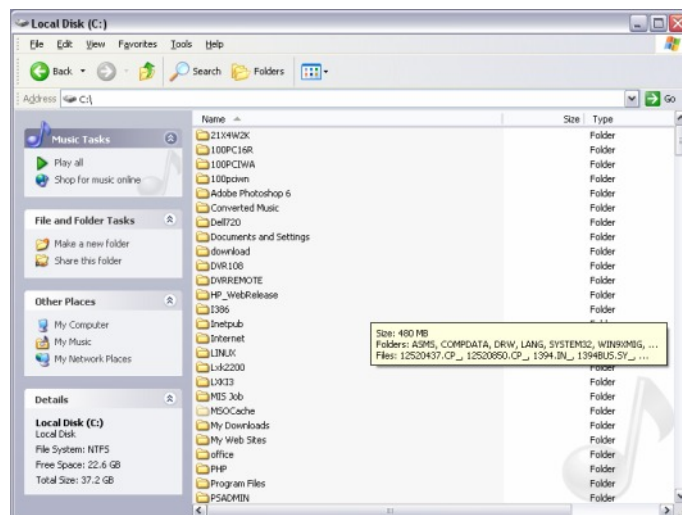


TEW-431BRP F.A.Q.

Step 7. Connect your computer's network adapter into the WAN port on the back of the router.

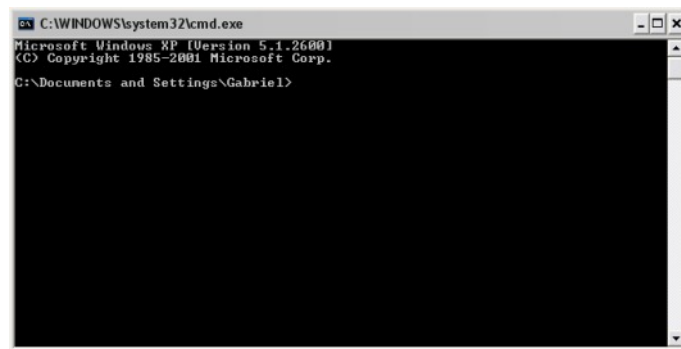
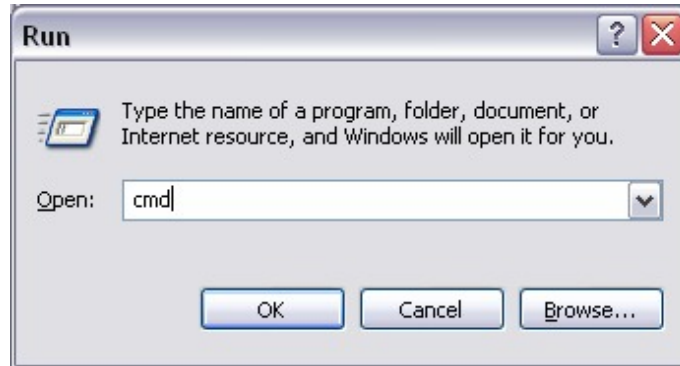


Step 8. Copy the firmware file 431BRP_FW1204.img to the root of the C: drive.

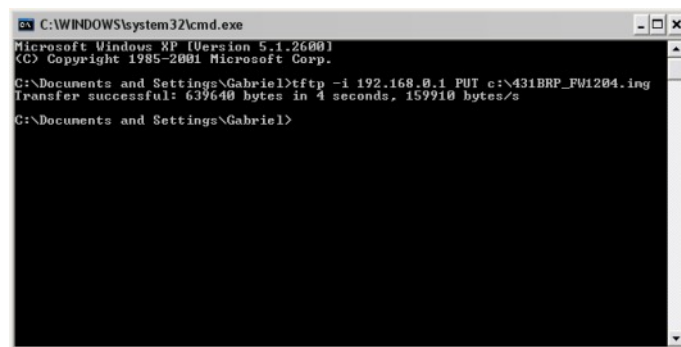


TEW-431BRP F.A.Q.

- Step 9.** Go to a command prompt. Click **Start** then **Run**. Type in “**cmd**”, without the quotes then click **OK**. If you are using Windows 9x or Windows ME type in “**command**”, without the quotes the click **OK**.



- Step 10.** Type “**tftp -i 192.168.0.1 PUT c:\431BRP_FW1204.img**”, without the quotes and hit enter.



- Step 11.**
- 1) After a successful transfer do a hard reset on the router.
 - a) Disconnect the power supply from the router.
 - b) Wait approximately 10 seconds.
 - c) Press and hold in the reset button on the router.
 - d) While holding in the reset button reconnect the power supply
 - e) Continue to hold in the power supply for approximately 15 seconds.
- Step 12.** If the router still has a solid red status light or it not accessible through the LAN ports at this point please go to www.trendnet.com/rma and submit the form for warranty service on the router.