



# TRENDNET



## Quick Installation Guide



# TEW-429UF

# Table of Contents

Español .....	1
1. Antes de iniciar .....	1
2. Cómo se instala .....	2
3. Cómo usar el adaptador inalámbrico .....	5
Troubleshooting .....	6

# 1. Preparación para la instalación

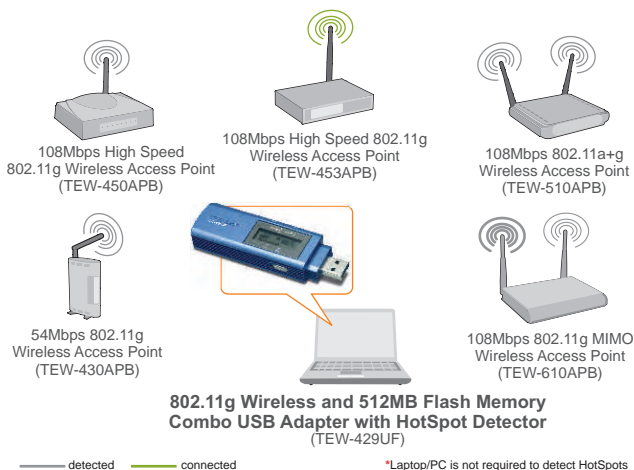


## Contenidos del paquete

- TEW-429UF
- CD-ROM del controlador y la herramienta
- Guía de instalación rápida
- Cable de extensión USB

## Requisitos del sistema

1. Un PC habilitado para USB
2. Un procesador de 300 MHz y 128 MB de memoria (Recomendado)
3. Un mínimo de 20MB de espacio en disco duro
4. Una unidad de CD-ROM
5. Un Punto de Acceso 802.11b o 802.11g (para Modo de Infraestructura) u otro adaptador inalámbrico 802.11g (para un modo de red Ad-Hoc o Usuario a Usuario).
6. Windows 98SE/ME/2000/XP



## 2. Cómo se instala

**Nota:** Por favor encienda su PC y siga las instrucciones que aparecen a continuación.

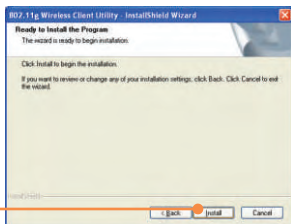
1. Conecte el adaptador USB inalámbrico TEW-429UF al puerto USB de su PC.



2. Haga clic en **Install Utility & Driver** (Instalar la herramienta y el controlador).

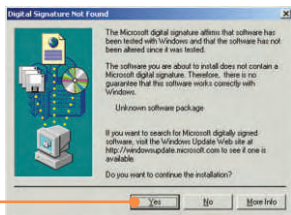
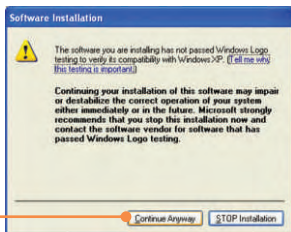


3. Haga clic en **Next (Siguiete)** para cada paso de la instalación, y después haga clic en **Install (Instalar)**.

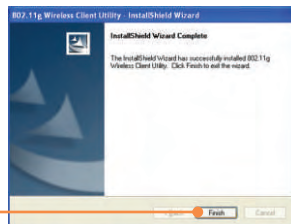


**Nota:** Los Adaptadores Inalámbricos de TRENDnet han sido examinados en su totalidad para su compatibilidad con los Sistemas Operativos de Windows y han sido aprobados para su funcionalidad.

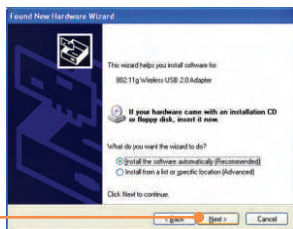
4. Haga clic en **Continue Anyway** (Continuar de todas formas) o en **Yes (Sí)**.



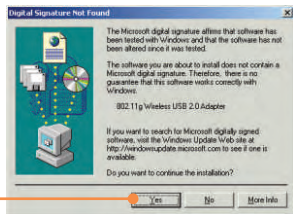
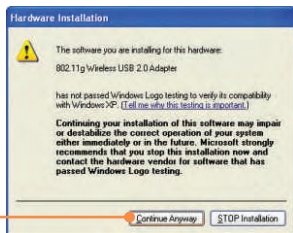
5. Haga clic en **Finish (Finalizar)**.



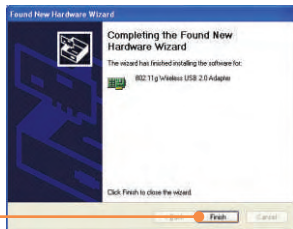
6. Haga click en **Next (Siguiente)**.



7. Haga clic en **Continue Anyway** (Continuar de todas formas) o en **Yes (Sí)**.



8. Haga clic en **Finish (Finalizar)**.



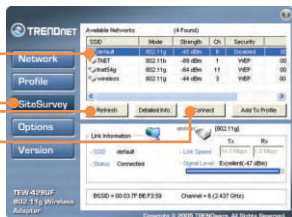
### 3. Cómo usar el adaptador inalámbrico

**Nota:** Recomendamos que reinicie su PC antes de utilizar el TEW-429UF

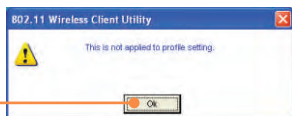
1. Haga doble clic en el icono inalámbrico del PC en la bandeja del sistema .



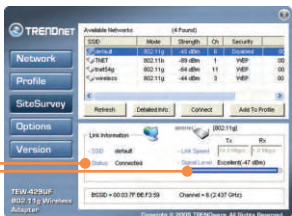
2. Haga clic en **Site Survey** (Inspección del sitio), luego pulse **Refresh** (Refrescar) y después seleccione el punto de acceso deseado. Haga clic en **Connect** (Conectar).



3. Haga clic en **OK**.



4. Compruebe el estatus de su conexión.



### La instalación ha sido completada

**Nota:** Para más detalles sobre las características avanzadas, por favor consulte la Guía del Usuario.

**Q1: I completed all the steps in the quick installation guide, but my wireless USB Adapter isn't connecting to my access point. What should I do?**

**A1:** First, you should verify that the Network SSID matches your wireless router or access point's SSID. Second, you should check your TCP/IP properties to ensure that Obtain an IP address automatically is selected. Third, you can click on the Site Survey link to check and see if there are any available wireless networks listed.

**Q2: Windows is unable to recognize my hardware. What should I do?**

**A2:** Make sure your computer meets the minimum requirements as specified in Section 1 of this quick installation guide. Also, you must install the wireless configuration utility before connecting the wireless USB Adapter.

**Q3: I cannot open the wireless configuration utility. What should I do?**

**A3:** Go to your device manager (control panel → system) to make sure the adapter is installed properly. If you see a networking device with a yellow question mark or exclamation point, you will need to reinstall the device and/or the drivers.

If you still encounter problems, please refer to the User's Guide CD-ROM or contact technical support.

## Certifications

This equipment has been tested and found to comply with FCC and CE Rules. Operation is subject to the following two conditions:

- (1) This device may not cause harmful interference.
- (2) This device must accept any interference received.  
Including interference that may cause undesired operation.



Waste electrical and electronic products must not be disposed of with household waste. Please recycle where facilities exist. Check with you Local Authority or Retailer for recycling advice.



**NOTE:** THE MANUFACTURER IS NOT RESPONSIBLE FOR ANY RADIO OR TV INTERFERENCE CAUSED BY UNAUTHORIZED MODIFICATIONS TO THIS EQUIPMENT. SUCH MODIFICATIONS COULD VOID THE USER'S AUTHORITY TO OPERATE THE EQUIPMENT.





# TRENDnet

## TRENDnet Technical Support

### US/Canada Support Center

**Contact**

Telephone: 1(866) 845-3673

Email: support@trendnet.com

**Tech Support Hours**

24/7 Toll Free Tech Support



### European Support Center

**Contact****Telephone:**

Deutsch : +49 (0) 6331 / 268-460

Français : +49 (0) 6331 / 268-461

0800-90-71-61 (numéro vert)

Español : +49 (0) 6331 / 268-462

English : +49 (0) 6331 / 268-463

Italiano : +49 (0) 6331 / 268-464

Dutch : +49 (0) 6331 / 268-465

**Fax:** +49 (0) 6331 / 268-466

**Tech Support Hours**

8:00am - 6:00pm

Middle European Time

Monday - Friday

## Product Warranty Registration

Please take a moment to register your product online.

Go to TRENDnet's website at <http://www.trendnet.com>

## TRENDnet

3135 Kashiwa Street

Torrance, CA 90505

USA