



## Quick Installation Guide



**TEW-429UB**

# Table of Contents

English .....	1
1. Before You Start .....	1
2. Using the Hot Spot Detector .....	2
3. How to Install .....	5
4. Wireless Configuration .....	7
Troubleshooting .....	10

# 1. Before You Start



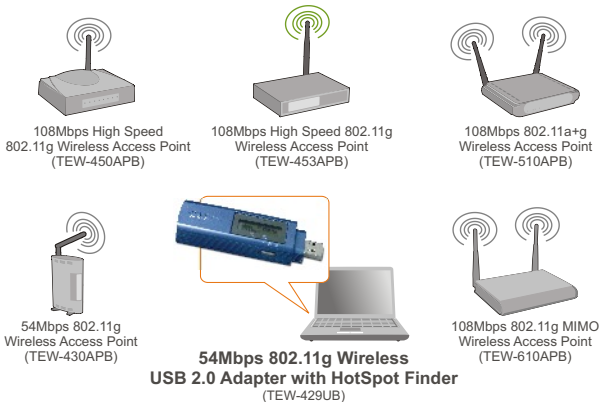
## Package Content

- TEW-429UB
- Driver & Utility CD-ROM
- Quick Installation Guide

## System Requirements

- CD-ROM Drive
- Computer with an available USB port
- CPU: 300 MHz or above
- Memory: 128 MB or above
- Hard Drive Space: 20MB or above
- 802.11b or 802.11g Access Point (for Infrastructure Mode) or another 802.11g Wireless Adapter (for Ad-Hoc/Peer-to-Peer networking mode).
- Windows XP/2000/ME/98SE

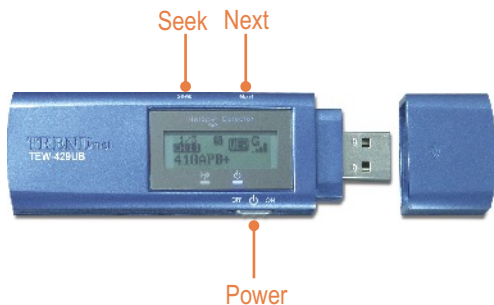
## Application



\*Laptop/PC is not required to detect HotSpots

## 2. Using the Hot Spot Detector




The following table illustrates each button's function.











Button	Functions
Power	Switch Power on/off
Seek	<ol style="list-style-type: none"><li>1. Press [Seek] to search hotspots</li><li>2. Press and hold the [Seek] button for 2 seconds to use different scanning features</li></ol>
Next	View the next access point

The following illustration explains the meaning for each symbol on the LCD display.



<b>SSID</b>	Displays the SSID of the access point. If the SSID is longer than 16 characters, it will scroll horizontally.
<b>Channel</b>	Displays the channel in use.
<b>Entry</b>	Displays the current entry. The TEW-429UB can hold a maximum of 16 entries.
<b>Power</b>	<p>Indicate the battery life status.</p> <p> Battery low</p> <p> Battery full</p> <p> At “adapter” mode, or charging the battery through USB port</p>

<p><b>Scan mode</b></p>	<p>There are 3 scan modes (S, F and D mode). Hold the “Seek” button to toggle between scan modes. After switching to the desired scan mode, press “Seek” button again to do a site survey.</p> <ul style="list-style-type: none"> <li> [S] Mode: Ranks access points in the order of signal strength.</li> <li> [F] Mode: Lists all unencrypted access points (access points without security) and ranks each access point in signal strength order.</li> <li> [D] Mode: Locks onto one access point to test its signal strength at different locations.</li> </ul>
<p><b>Security</b></p>	<p>Indicates security setting of the wireless network.</p> <ul style="list-style-type: none"> <li> WPA security is enabled</li> <li> WEP security is enabled</li> <li> Wireless security is disabled (no security)</li> </ul>
<p><b>Signal</b></p>	<p>Indicates the signal strength and the radio band (802.11b/g) of wireless network. There are 5 levels of signal strength.</p> <ul style="list-style-type: none"> <li> 802.11g mode at 2.4 GHz band</li> <li> 802.11b mode at 2.4 GHz band</li> </ul>

## 3. How to Install

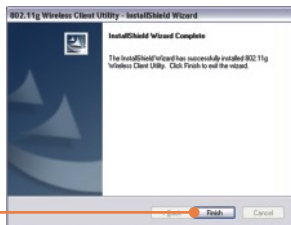
**Note:** Do not connect the Wireless USB Adapter to your computer until you have finished installing the Wireless Client Utility.

### For Windows Users

1. Insert the **Utility & Driver CD-ROM** into your computer's CD-ROM Drive and then click **Install Utility**.



2. Follow the **InstallShield Wizard** instructions. Click **Finish**.

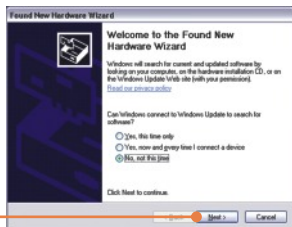


**Note:** The TEW-429UB is hot pluggable, you can connect or disconnect the TEW-429UB while the computer is on. After inserting the TEW-429UB into one of your USB ports, the Found New Hardware window appears.

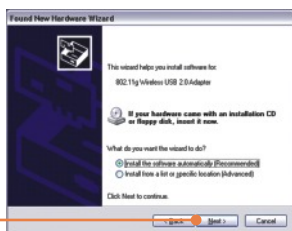
3. Connect the TEW-429UB into your computer's USB port.



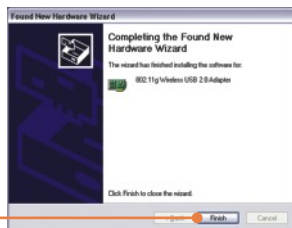
4. The **Found New Hardware Wizard** appears, select **No**, and then click **Next**.



5. Click **Next**.



6. Click **Finish**.



**Your installation is now complete.**

**Note:** After installation is complete, a **Wireless** icon will appear in your system tray (next to the clock on the bottom right corner of your screen). If it does not appear, restart your computer. **Go to Section 4 Wireless Configuration to configure the TEW-429UB.**



## 4. Wireless Configuration

Note: Wireless configuration requires a 802.11b or 802.11g Access Point (for Infrastructure Mode) or another 802.11g Wireless Adapter (for Ad-Hoc/Peer-to-Peer networking mode).

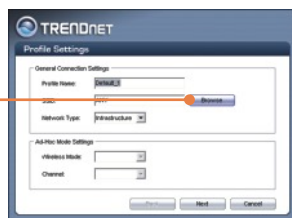
1. Double-click the **wireless** icon on your system tray.



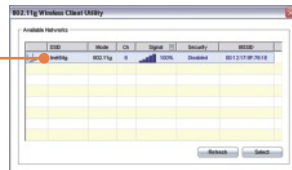
2. Click **Profile** and then click **Add**.



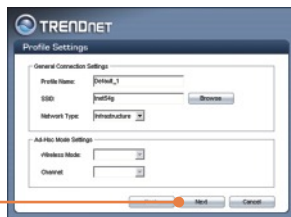
3. Click **Browse**.



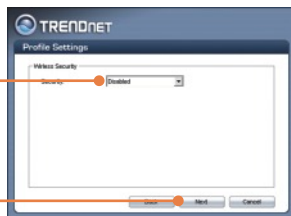
4. Double-click the **SSID** that matches your wireless access point.



5. Click **Next**.

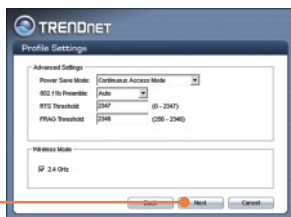


6. Select **Security** corresponding to the wireless network and then click **Next**.



Note: If your wireless network has wireless security, then the **Wireless Client Utility** will instruct you to enter wireless security settings before continuing to the steps below. Refer to the User's Guide regarding Wireless Security.

7. Verify **Advanced Settings** and **Wireless Mode** and then click **Next**.



8. Click **Activate Now**.



9. Verify that the **Link Status** is **Connected**.



**Your installation is now complete.**

For detailed information regarding the TEW-429UB configuration and advanced settings, please refer to the User's Guide included on the Utility & Driver CD-ROM or TRENDnet's website at [www.trendnet.com](http://www.trendnet.com)

**Q1: I inserted the Utility & Driver CD-ROM into my computer's CD-ROM Drive and the installation menu does not appear automatically. What should I do?**

**A1:** If the installation menu does not appear automatically, click Start, click Run, and type D:\Autorun.exe where "D" in "D:\Autorun.exe" is the letter assigned to your computer's CD-ROM Drive. And then click OK to start the installation.

**Q2: I completed all the steps in the Quick Installation Guide, but my Wireless USB Adapter isn't connecting to my access point. What should I do?**

**A2:** First, verify that the Network Name (SSID) matches your wireless router or wireless access point's SSID. Second, you should check your TCP/IP properties to ensure that Obtain an IP address automatically is selected. Third, you can click on the Site Survey tab of the Wireless Client Utility to check and see if there are any available wireless networks listed.

**Q3: Windows is unable to recognize my hardware. What should I do?**

**A3:** Make sure your computer meets the minimum requirements as specified in Section 1 of this Quick Installation Guide. Also make sure that you install the Wireless Client Utility (as described in Section 3) before connecting the Wireless USB Adapter. If Windows is still unable to recognize your hardware, then try installing the Wireless USB Adapter to a different USB port of your computer.

**Q4: I cannot open the Wireless Configuration Utility. What should I do?**

**A4:** Go to your Device Manager to make sure the adapter is installed properly. If you see a networking device with a yellow question mark or exclamation point, you will need to reinstall the device and/or the drivers. To access your Device Manager, right-click My Computer, click Properties, click the Hardware tab, and then click Device Manager.

If you still encounter problems or have any questions regarding the TEW-429UB, please refer to the User's Guide included on the Utility & Driver CD-ROM or contact Trendnet's Technical Support Department.

## Certifications

This equipment has been tested and found to comply with FCC and CE Rules.

Operation is subject to the following two conditions:

- (1) This device may not cause harmful interference.
- (2) This device must accept any interference received. Including interference that may cause undesired operation.



Waste electrical and electronic products must not be disposed of with household waste. Please recycle where facilities exist. Check with you Local Authority or Retailer for recycling advice.



**NOTE:** THE MANUFACTURER IS NOT RESPONSIBLE FOR ANY RADIO OR TV INTERFERENCE CAUSED BY UNAUTHORIZED MODIFICATIONS TO THIS EQUIPMENT. SUCH MODIFICATIONS COULD VOID THE USER'S AUTHORITY TO OPERATE THE EQUIPMENT.



## TRENDnet Technical Support

### US • Canada

**Toll Free Telephone:** 1(866) 845-3673

24/7 Tech Support



### Europe (Germany • France • Italy • Spain • Switzerland • UK)

**Toll Free Telephone:** +00800 60 76 76 67

English/Espanol - 24/7

Francais/Deutsch - 11 am-8pm, Monday - Friday MET

### Worldwide

**Telephone:** +{31} (0) 20 504 05 35

English/Espanol - 24/7

Francais/Deutsch - 11 am-8pm, Monday - Friday MET

## Product Warranty Registration

Please take a moment to register your product online.

Go to TRENDnet's website at <http://www.trendnet.com>

**TRENDnet**

3135 Kashiwa Street  
Torrance, CA 90505  
USA