



Quick Installation Guide



TEW-424UB

Table of Contents

Español	1
1. Antes de iniciar	1
2. Cómo se instala	2
3. Configuración inalámbrica	5
Troubleshooting	6



Contenidos del paquete

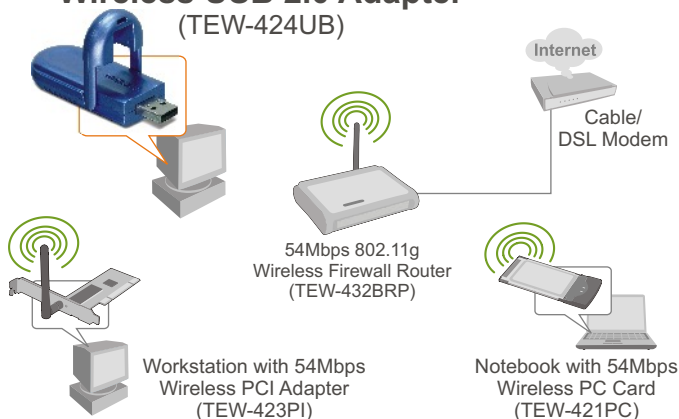
- TEW-424UB
- Guía de instalación rápida
- CD-ROM del controlador y la herramienta
- Cable de extensión USB

Requisitos del sistema

- Puertos USB: 1.1 ó 2.0
- Unidad de CD-ROM
- CPU: Intel Pentium 300 MHz o superior
- Memoria: 256 MB o superior
- Windows XP/2000/ME/98SE

Aplicación

Workstation with 54Mbps Wireless USB 2.0 Adapter (TEW-424UB)

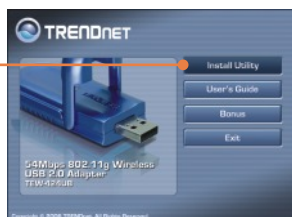


2. Cómo se instala

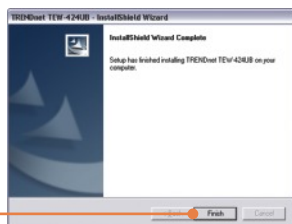
¡Importante! NO conecte el adaptador USB inalámbrico a su PC a menos que se le indique.

Nota: Consulte la Guía del Usuario en el CD-ROM del controlador para las instrucciones de instalación de Windows 98SE y Windows ME

1. Introduzca el **CD-ROM del controlador y de la herramienta** en la unidad de CD-ROM de su PC y luego haga clic en **Install Utility** (Instalar herramienta).



2. Siga las instrucciones del **InstallShield Wizard** (asistente de InstallShield).



3. Haga clic en **Finish (Finalizar)**.

4. Conecte el adaptador inalámbrico a un puerto USB disponible de su PC.

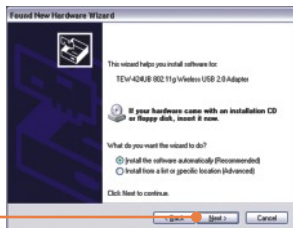


Nota: Para Windows XP, vaya al paso 5. Para Windows 2000, vaya al paso 7.

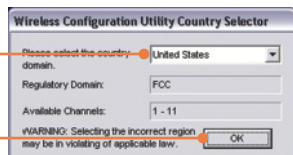
5. Luego, aparecerá la ventana **Found New Hardware Wizard** (Asistente para nuevo hardware encontrado), seleccione **No**, y después haga clic en **Next** (Siguiente).



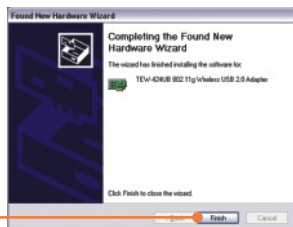
6. Haga clic en **Install the software automatically** (Instalar el software automáticamente) (**Recomendable**) y luego pulse **Next** (Siguiente).



7. Seleccione el **dominio de país** apropiado y luego haga clic en **OK**.



8. Haga clic en **Finish (Finalizar)**.



La instalación ha sido completada

Para obtener información más detallada sobre la configuración así como de las configuraciones avanzadas del TEW-424UB , por favor consulte la sección de resolución de problemas, el CD-ROM de la Guía del Usuario, o el sitio Web de Trendnet en <http://www.trendnet.com>.

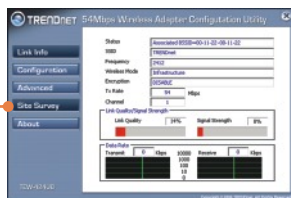
3. Configuración inalámbrica

Nota: Si está ejecutando Windows XP, debe desactivar la Configuración cero inalámbrica (Wireless Zero Configuration). Consulte la pregunta 4 del apartado Resolución de problemas.

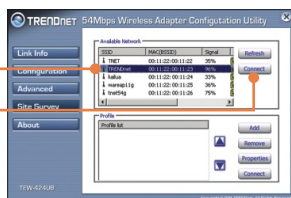
1. En la esquina inferior derecha de la pantalla, haga **doble clic** en el icono de la **utilidad de configuración de la red LAN inalámbrica**.



2. Haga clic en **Site Survey**.



3. Haga clic en la **SSID** que corresponda con el punto de acceso inalámbrico que usted posee y luego pulse **Connect** (Conectar).



La configuración inalámbrica ha finalizado

Para obtener información más detallada sobre la configuración así como de las configuraciones avanzadas del TEW-424UB, por favor consulte la sección de resolución de problemas, el CD-ROM de la Guía del Usuario, o el sitio Web de Trendnet en <http://www.trendnet.com>.

Q1: I inserted the Utility & Driver CD-ROM into my computer's CD-ROM Drive but the installation menu does not appear automatically. What should I do?

A1: If the window does not appear automatically, click Start, click Run, and type D:\autorun.exe where "D" in "D:\autorun.exe" is the letter assigned to your CD-ROM Drive, and then press the ENTER key on your keyboard.

Q2: I completed all the steps in the quick installation guide, but my Wireless USB Adapter is not connecting to my access point. What should I do?

A2: First, verify that the Network Name (SSID) matches your wireless router or access point's Network Name (SSID). Second, check your TCP/IP properties to ensure that Obtain an IP address automatically is selected. Third, open the Wireless LAN Configuration Utility icon, click the Site Survey link and then click Refresh to check and see if there are any available wireless networks listed.

Q3: Windows is unable to recognize my hardware. What should I do?

A3: First, make sure your computer meets the minimum requirements as specified in Section 1 of this quick installation guide. Second, you must complete the installation of the wireless configuration utility (as described in Section 2) before connecting the Wireless USB Adapter to your computer. Third, connect the Wireless USB Adapter to a different USB port of your computer.

Q4: I cannot open the wireless configuration utility. What should I do?

A4: First, access your device manager to make sure the adapter is installed properly. If you see a networking device with a yellow question mark or exclamation point, you will need to reinstall the device and/or the drivers. To access your device manager, right-click **My Computer**, click **Properties**, under the **Hardware** tab click **Device Manager**. Second, if you are running Windows XP, you need to disable wireless zero configuration. Go to **Control Panel -> Network Connections**. Right click on the **Wireless Network Connection** icon and select **Properties**. Click on the **Wireless Networks** tab and uncheck **Use windows to configure my wireless settings**. Then click **OK**.

Q5: How do I install the drivers on Windows 98SE or ME?

A5: Please refer to the User's Guide included on the Driver CD-ROM.

If you still encounter problems or have any questions regarding the TEW-424UB, please refer to the User's Guide included on the Utility & Driver CD-ROM or contact Trendnet's Technical Support Department.

Certifications

This equipment has been tested and found to comply with FCC and CE Rules.

Operation is subject to the following two conditions:

(1) This device may not cause harmful interference.

(2) This device must accept any interference received. Including interference that may cause undesired operation.



Este equipamento opera em caráter secundário, isto é, não tem direito a proteção contra interferência prejudicial, mesmo de estações do mesmo tipo, e não pode causar interferência a sistemas operando em caráter primário.

Waste electrical and electronic products must not be disposed of with household waste. Please recycle where facilities exist. Check with you Local Authority or Retailer for recycling advice.



NOTE: THE MANUFACTURER IS NOT RESPONSIBLE FOR ANY RADIO OR TV INTERFERENCE CAUSED BY UNAUTHORIZED MODIFICATIONS TO THIS EQUIPMENT. SUCH MODIFICATIONS COULD VOID THE USER'S AUTHORITY TO OPERATE THE EQUIPMENT.

ADVERTENCIA

En todos nuestros equipos se mencionan claramente las características del adaptador de alimentación necesario para su funcionamiento. El uso de un adaptador distinto al mencionado puede producir daños físicos y/o daños al equipo conectado. El adaptador de alimentación debe operar con voltaje y frecuencia de la energía eléctrica domiciliar existente en el país o zona de instalación.



TRENDnet Technical Support

US • Canada

Toll Free Telephone: 1(866) 845-3673
24/7 Tech Support



Europe (Germany • France • Italy • Spain • Switzerland • UK)

Toll Free Telephone: +00800 60 76 76 67
English/Espanol - 24/7
Francais/Deutsch - 11am-8pm, Monday - Friday MET

Worldwide

Telephone: +{(31) (0) 20 504 05 35
English/Espanol - 24/7
Francais/Deutsch - 11am-8pm, Monday - Friday MET

Product Warranty Registration

Please take a moment to register your product online.
Go to TRENDnet's website at <http://www.trendnet.com>

TRENDnet[®]
20675 Manhattan Place
Torrance, CA 90501
USA